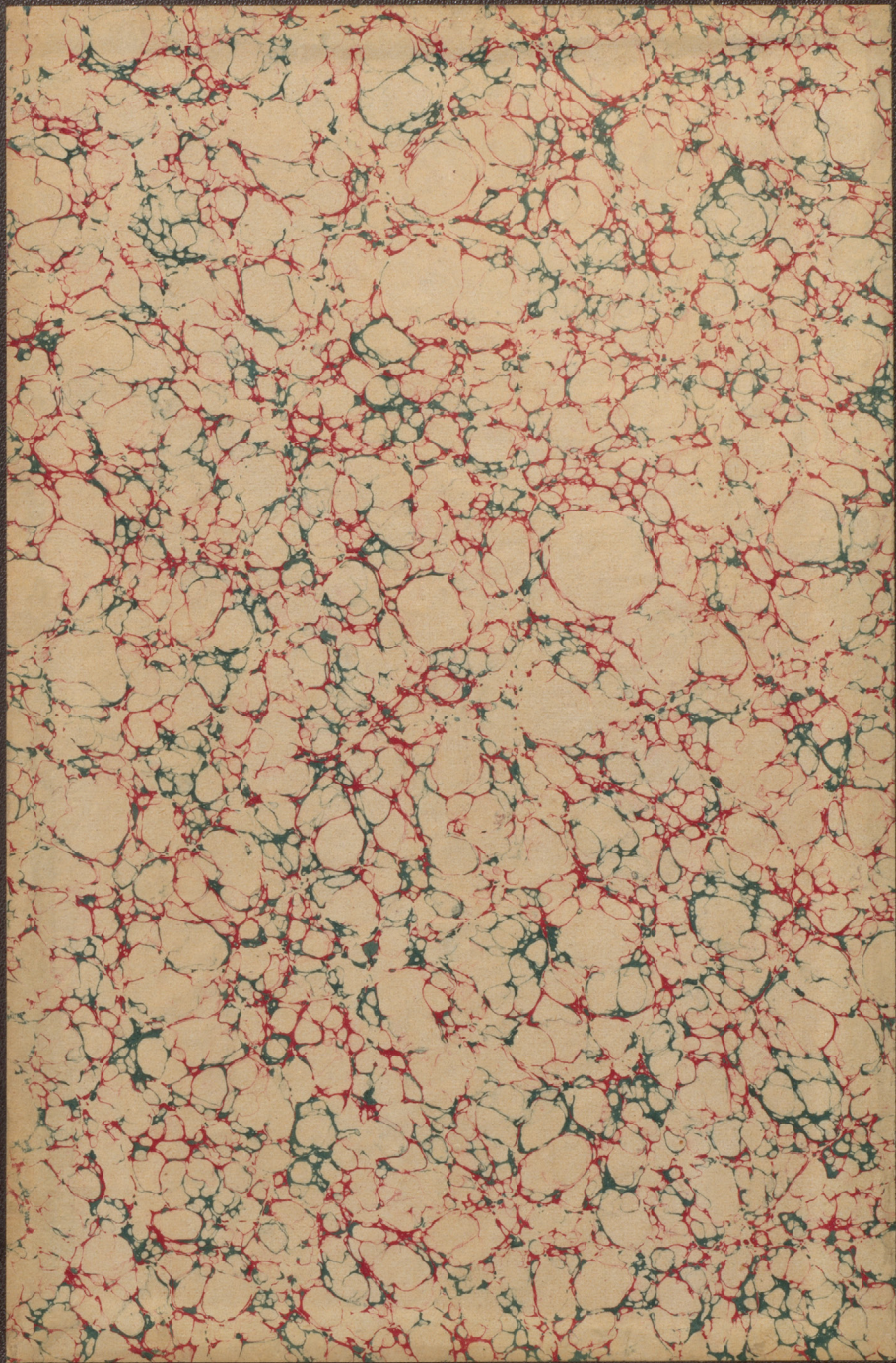


Seige of
Port Arthur





The Feng-huang-shan hills
with the Fort Arthur Fort hills
in the distance —
Relative positions - opposing faces.



The peace negotiations
the guards with them while they
outside Plumtree Cottage in the
Village of Shuski.



Winter Quarters

Headquarters 1st. Division - Camp
is upon steep slopes of hill close
to 203 Metre Hill.



On sentry duty in the front lines
on a cold day.

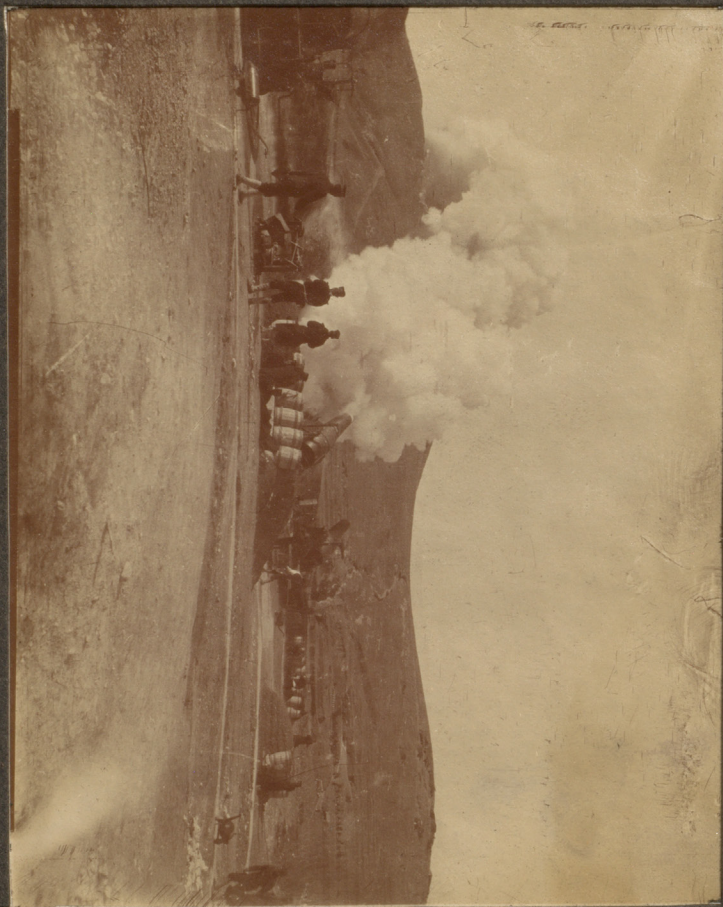
The wooden tank gun used for
throwing dynamite grenades.







London Museum Warehouse
in the Park or for Arthur.



Having one of the 11 inch Residues
length of skull 300 pounds











Japanese soldiers patronizing one of
the Army Cantens.



Wakeling a Japanese *terribilis*
of the *Heaven* *Forest*



A typical Camp scene in rear
of the Japanese lines.



General Stewart + his staff leaving
Plumtree Cottage after his meeting
with General Rogers to return to
Fort Arthur



Wounded during at Hading.







Heavy Russian guns captured on
the Pankov position.



A Regiment drawn up for inspection
before an attack



section of the North Jackson Fort
eroded by dynamic mines.











One of the main Japanese battery
positions with the Fort Arthur
hills in the background.



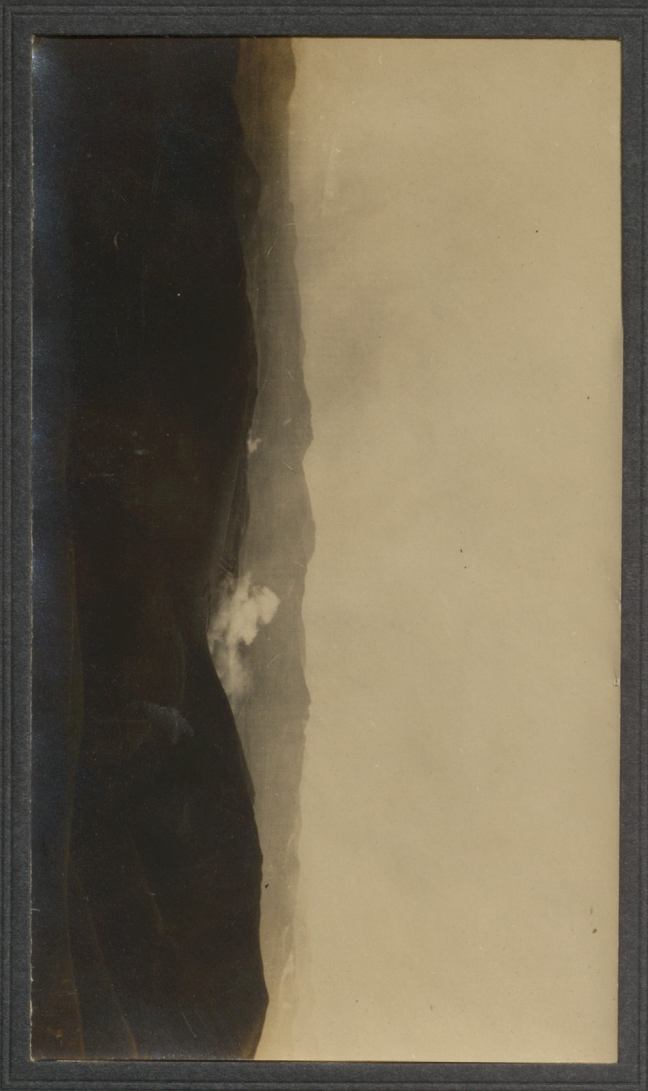
Japanese soldiers - prisoners of war
being escorted to Chang-ling-ku
railway station from Fort Arthur.



Japanese Camp Mitchell







A Russian shell bursting in a
Japanese battery position —
at Port Arthur hills in the background.







Japanese prints watching the movements
of the army



Japanese soldiers making a permanent
camp in rear of the lines.







Russian shoe hunting in Japan
battery position.



The moat of the North Tower
Fort showing section of the
Japanese galleries under the
counterscarp of the moat.



Camp of the 8th Regiment of
Saka 20 reserves
The White Feather Regiment"



General Steel showing off the
pieces of the charger he desired
to present to General Rogers.



Good specimen of the Japanese
sagebrush.



Chinese troops marching from
Fort Arthur to Chang-ling-tsu
after the surrender.



The Camp of the 9th Regiment of the
Osaka reserves.



Watching the fight upon 203 Mele's Hill.



A captured Russian battery position.







The Japanese Battery positions with
Port Arthur Forts in background.

ACC. No.

002.24a

CLASS MK.

DATE

VOL.

4

DATE REC'D

JAN 20 1948

AGENT

FUND

COST

NOTIFY

SEND TO

PRESENTED Estate of the late
Mrs. Constance R. Smith.

BINDING

BINDER

COST

McGILL UNIVERSITY LIBRARY

ROUTINE SLIP

