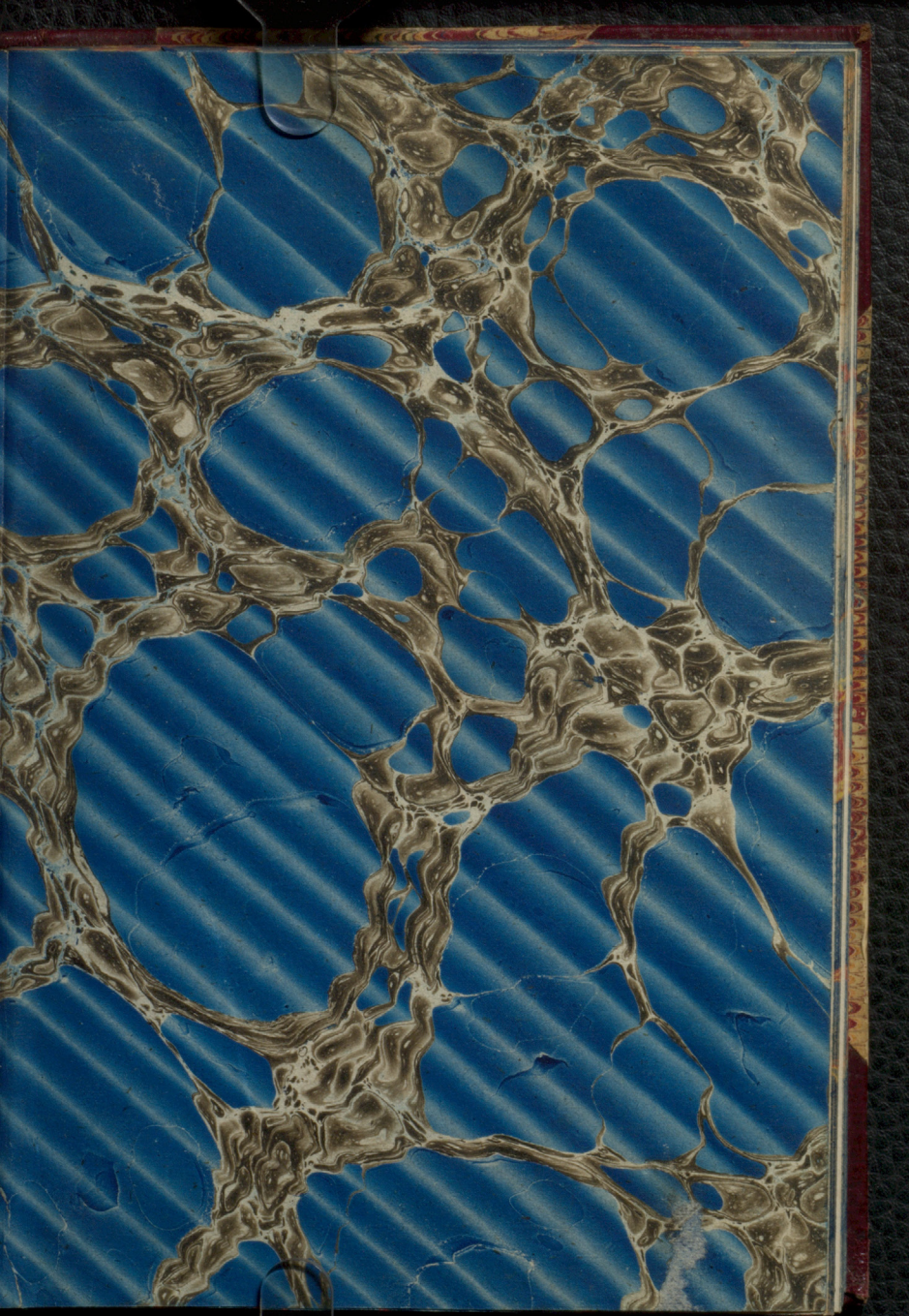




The image shows the front cover of an antique book. The cover is decorated with a marbled paper pattern consisting of a blue background with diagonal lines and a complex, organic, brownish-gold pattern that resembles marbled paper or a biological structure. A central diamond-shaped label is pasted onto the cover. The label features a crown at the top, a central illustration of a book with a ribbon, and a small anchor at the bottom. The text on the label is as follows:

26 & 46 GOSWELL STREET LONDON, E.C.  
**BOOKSELLER,**  
**BOOKBINDER,**  
STATIONER, ENGRAVER & PRINTER,  
**MANUFACTURER OF ACCOUNT BOOKS,**  
POCKET BOOKS, CARD-CASES & PURSES.  
BINDING FOR THE TRADE.

JOHN W. ...



Wm Bell

1 Belmont St.

Montreal

Materia Medica -

Dr. Wright -

Mc Gill College -

Book No. III

Session 1875-6.

Wednesday, Feb. 16<sup>th</sup> 1846.

Mustard. Add of Green  
pepper. Chromate of lead  
and equal parts of Nitrate  
of KO. Divide into 2 parts  
in a dish. in a grad 212  
& then add acetic lead  
& yellow ppl. To the other  
part add KO & an  
of PbO (red) is depld  
When mustard seed pressed  
oil like ~~oil~~ & this contains  
Myrosin. & Pyruvic or pyruvic  
acid = 1/2 of 1/2. in acid  
the scale of reaction of pyru-  
vic pyruvic of KO. The active  
principle of mustard depends on  
the action of 2 - feeding upon  
each other just as chloroform  
or proximate principles act on each other.  
then pyruvic & pyruvic acid act  
on each other.

The vol of p. 1.015 this fungus  
and redness & bleeding. 10th.  
On rabbit death.

Acteas - as a cardiac stimulant, slightly  
toxic &c. - small quantities.

Lupin does = ulio - toxic = effects  
of brom. in internal: glands  
= 1 to 2 the of grapes = emetic.

On skin = a counter irritant.

Styptic herbs.

Ures - Not used internally except as  
an emetic, in urgent cases.

If used not in 10 min. give  
a 2<sup>d</sup> dose - For apoplexy  
throaty to much suffer.

For poisoning } narcotic &  
belladonna, hyoscyamus, &c. Comb.  
with Atm. In combination.

Colera starts with collapse

1/2 oz <sup>brisk</sup> with milk = diuretic. Dose

15 grains flaxseed 2 or 3 a

day. Should not be given if bridge  
out of nose.

For Diarrhoea -

See Pharm for follow:

Take mixed milk & mixed  
and 2oz each & 20 oz of  
water.

As blisters use cold water  
as hot coagulate the  
pyroene. So of alk. se.  
wh. might be useful & in  
stomach. but turpentine de.  
very humid. Cataplasms.

Always heat to wet cloth first.  
time 20 & 30 minutes. Unbearable.

"Vigors decrease the strength of  
nurses."

For relief of chest & throat for  
cough or sore throat.

For bilious & windy colic  
& abdomen's Poppegrunk for  
headache - de.



Cathartes or Purpalluvius.

Most of them melted. Act  
1<sup>st</sup> on m. m. of bowels more  
blood to them & so diarrhoea  
of cir<sup>ca</sup> - a dimid<sup>ed</sup> suff<sup>er</sup>  
clamor. Scintillations etc. on  
Bowel, liver, & pancreas all  
firm not more fluid. Pain  
of diverse strata of intestine walls.  
If could examine intestines now  
reddened etc. This to remote parts:  
Brain<sup>les</sup> has circle in it. This act,  
for fulg<sup>or</sup> of pt. Reins bed<sup>ded</sup>  
Skin, cold, pain, dry, etc.  
Liver much under control &  
stimulate bile<sup>ly</sup> see of great system  
act on. Re lungs also & so  
indirect expectorants. Lungs bronchi  
full of sputa tub. pt. too weak to  
expellib & now made thin &  
cyst<sup>ic</sup> of - As divertic. Act on on  
kidneys - By amending colour allow  
kidneys to act.

The uterus needs of sympathy for  
conting of m. m. increase  
of masses.

Operation absolute. & are used in  
dropsy, &c. - effect of peritonitis also  
giving indication to sleep.

Necessary to allow catheter to  
work. must be no artificial  
obstruction as inflammation or  
troubling of intestine - must  
be a clear passage.

Often find some ext. tumors exist.  
Intestines must contain  
something to act on. & the  
inner surface m. m. should  
be lubricated. When very dry,  
don't act so well. Lices must  
not be computed. Passes, rivers  
serve mostly for formation cause  
a black color. Clout a white color.

Hg. in children like opium like  
Iron black. Oly. when in Hg.

Properties of *ping. cicutaria*. - An  
essing stomach, starts as if  
tongue than thick at a very color  
toward base - or red of corn  
with shining anns. 3<sup>d</sup> of tongue  
pand or dry. 4<sup>th</sup> of dry -  
shiny. 5<sup>th</sup> of calyx red &  
indicated by teeth 6<sup>th</sup> of very  
edemic. fainter of health &  
headache.

Of stomach causing hard or very  
offensive - or food undigested as  
in diarrhoea. Dryness, red of  
color - in dry irregular cutis.

### 3 Classes of Cathartics

1<sup>st</sup> (Mildest)

2<sup>d</sup> purgative or aperient (medium)

3<sup>d</sup> - drastic. (strongest)

Some kind of food as bread, bread,  
apples, sulphur, Mg.

2<sup>d</sup> - more copious stool, than usual,  
pt. exemplar of pain, nausea -  
colic -

Purgatives act whether swallowed, to  
skin, or injected per rectum.

3<sup>d</sup> Drastic. Vomits pink.

think this & copious evacua  
they might inflame intestines  
in persons as thin as med.  
does.

Another dir.

1 ℥ss.

2 S

3 ℥ss. R<sub>o</sub> Ladu &

4 ℥ss. R<sub>o</sub> as resin

subd. with rind & pomel  
5<sup>th</sup> fish oil, as castor.

or divide as to part of  
intestine acted on - per  
Stomach & rectum.

Sp. on stomach only

think on duodenum & intestis

Callieum in duodenum - to  
live also but how uncertain.

Sour on Modicum & on restum  
as above. Kelpom & restum.

I drop a quantity on small  
intestines only.

Ventral duct increase exhalant  
venty & copious. Some discharge  
urine & phlegm.

It divided according to  
various of Deposition

1. Lecithinaceous.
2. Polygo - bile
3. Crystalline.
4. Pyramidal -
5. Paragofo. <sup>Worms of blood</sup> <sup>chamber</sup> <sup>allied.</sup>
6. Grey <sup>like</sup> <sup>anchimorphs</sup> -

### Sulphur.

Free in nature. Sicily. Volcanoes.  
Also in asphalt as emulsion as  
Cottage - In Umbelliferum as in  
asphaltum. In animal matter as  
S<sub>8</sub>. In metals as Sulphides as FeS<sub>2</sub>

Purify sulphur by fusion  
Sub or Sublimati.

1<sup>st</sup> In pot or crucible melting  
heat.

2<sup>d</sup> Quillen pot, dome & receive  
strains the vapors & receive  
apart from the -

3<sup>d</sup> Sublimati - from Iron  
pyrites. broken into plates  
filled & set fire to. This  
gives out a quantity.

Get admixture to 5 p.c. Chalk  
Al. silica, iron as a sulph.

A 2<sup>d</sup> process & purify it,  
as of the above method.

Massive S. in red or white  
ore of lead - "brimstone"

& a crystal, is dissolved in  
bismuth in  $CS_2$  & crystallizes out.

It is fusion of simple splint  
cups & under its fire crystals.

S. is non-volatile - & a non-  
condensable heat, so that of heat

of hard. Burns with purple flame  
 of  $\text{SO}_2$  fumes. Sol. in water. m. m.  
 at 400: of color crystals. of sudden  
 run flame bright & ductile  
 & used for casting coins &c.  
 Thursday July 14 1876.

Sulphur - Sublim. 2 lbs  
 1 Ointment of Sulphur with <sup>1 lb</sup> <sup>4</sup> <sup>oz</sup> <sup>of</sup> <sup>Castor</sup> <sup>oil</sup>.  
 Should be smooth &c.  
 1 Confection - sugar S. Tart and <sup>1 lb</sup> <sup>of</sup> <sup>orange</sup> <sup>juice</sup>  
 Dose =  $\frac{1}{2}$  to  $\frac{1}{3}$  3 ad.

Preparation of Sulphur  
 with lime & water - heaty.  
 soft & clear liquid - add  
 HCl. wh. sediment - m. is  
 called washed & dried. Belies  
 that hydro-sulphate of lime &c  
 add HCl. call fund. Or at  
 situation may be more  
 intricate - a call fund, as powder  
 contains particles of -

pt. S. gets yellow & has  
strong odor -  
of  $\text{SO}_2$  added into of the  
product up of lining. The  
sol. in warm & hold by per.  
Grey S.

more powerful than the  
pencil. So the drops  
after purifying S. but for  
soreness. used for horses.  
contains as. irritating  
Actions

In small doses opens  
& vomits in effort.  
As to its absorption. it is  
found to augment temp. as  
seen in pt. with cold etc.  
Rais pulse slightly. In  
large doses excites & irritates  
of lungs & per kidneys &  
intestines. Opens in  
experiment. In 6th experiment  
of coat of wall. Short time



of dark brown - Modified adhesion  
in low return.

for removal of antitoxic forms  
as lead & Hg. But principally  
as local remedy - as a specific  
for itch in 4 hours. as follows.

Surface well rubbed for 1/2  
hour with Soap & Hg.  
1 part S & 1/2 lead put in for 1  
hour. <sup>with</sup> It is in some with  
Dried & then dried. Treatment seems  
to skin with starch if thin -  
It destroys cause = Sarcophaga

The male insect wanders outside  
The female opens skin in  
burrows - Destroy apex of ova.  
Later reach of breaking burrows  
& soap & rubbing - A combination  
of itch & excoria continued  
until entire weakness of S & S lead  
& add chalk, <sup>Soap & Hg</sup> know burrows  
red spots & black speck.

It must not wear same clothes  
till well or better to 21 2<sup>d</sup>.

Acute Diarrhoea: In Acute dysentery  
females up to 21. Simple.

1/2 oz S. 1/2 oz Glyster & 6oz  
rose water - rub together &  
apply same time ady or less  
if not severe.

In Obstinate Diarrhoea also.

In Piles a lemon of  
peppermint & bismuth being the  
constipation. = part S. & cream  
tartar & a little treacle.

Dose = 1 <sup>drum</sup> <sup>or 5'</sup> table spoonful and  
lay 2 or 3 ady.

For muscular rheumatism,  
With iron & rhubarb.

If the suffer for days of  
temp & have febrile  
disease -

For chronic lead poisoning, as  
ES vapor taken internally

for removal -  
as follows for *S. laticornis* - Take egg  
sheet by flannel. strew with  
coat of Sub<sup>d</sup> S. & egg case - &  
comes with old silk - Change my  
2<sup>o</sup> or 3<sup>o</sup> day - cover paper & also  
of S. as set in sweet water &  
wain.

for Chovin Br. in old pt. with  
partic. with cream tartar.

for abd. rivins -

for tape worm -

for liver & organs -

Dose = 2 doses 1/3 - with jelly  
also ~~with~~ will do 1/2 dose with  
1 scrape jelly food.

Magnesia set-caps

My drug for My. O. C<sub>2</sub> & heat  
espally C<sub>2</sub> = Calcium Mg. &c.  
In Br. 2 and 2 each 2 1/2 g. wt.  
= light & heavy mg. Both

made same way but for  
lytes & they carbonate.  
to 2 of water in crucible &  
heat app. till on withdrawing  
a little & trying with S & S  
no effluence.

Now take cream & allow  
to cool. powder.

Mag. this job. P. 2. 252.3  
with soft impure S & add  
to temp. no S or S, strong  
bite. wool in water <sup>water</sup> and  
in and the hot. 26,000 but  
to of water cold water = 2000  
alkali. Under mic. yellow &  
of granules of prisms. granules  
= brown. Crystals = carb.

Tests = with water with phosphate into  
alt.

alt carb = subd a vt. S & S.

Bent in a col. <sup>salt</sup> as Sulphate.  
S & S. Am. Am. Cl. & P. S. S. can  
depl. turn down.

If nit. salt - added aft heat.  
a rose red color Acetate.

The diff. betw heavy & light  
1 part of B = 3 1/2 of light. with  
with a view find aft a  
time with the heavy & form a  
more even emulsion. & just  
sides - few pieces. nearly  
all powder.

Acetate - if red color =  
iron. perhaps for the crabb - or  
free nitric.

2<sup>d</sup> - a dash py or ant. but for  
soft or cineritious matter.

the salt. - By B.C. Sulphur.  
Cl. of Agt. Py.  
Operations - an antacid. &  
from this its subsp. sp<sup>o</sup>.  
depend. that to be used with aly with  
or aly. or alone. So matters as  
a pyretic. aury to what aim  
or ant. in stomach.

To eat a unit also kept on  
to stop for a moment.  
Much of it passes out undigested.  
May be retained in the intestine  
& form large balls if sol-  
is retained. 1 to 2 lbs. in one  
entire mass found in a large  
canal. Serious results as  
act as a tumor, causing  
obstruction or pressure on other  
parts of the lower  
extremities.

Some worms seen as passing  
from the anus in upper part of  
small intestine. not cause  
of the trouble as is not as.

Compound of Ullg -

2 drs. 6 grs. - 1 finger.

= Gregorio mixed not found  
Jan. 1852. 2 or 3 drs. before  
breakfast. Sometimes made into  
nutrient. for child  
2 drs. each day. 2 or 3 drs. 96 drs.  
a permanent

Carbonate of Mg.

3 parts cub<sup>ic</sup>, 1 meq. 76 units  
of double depth. 800. 1003  
Sulph. mag. 9/12 cub. soda.

If want light & heavy

1 part in 1/2 gallon water  
boiling & add tyth. bit  
for 1000 units. Pptn.  
sees & prevent overflow well  
washed till base w/pt. by  
set aside - get cub. mag.

2<sup>nd</sup> way don't use the  
small gutting. 2 1/2 pt.  
& mix w/ 6 & 1/2 pt. of water  
until till base. all day  
I don't want any. the double  
cup for pure salt. 2 1/2 pt. of  
the sol. & 1/2 pt. water. In the glass  
can be contaminated of sulphate.  
Not so in the 2<sup>nd</sup> as to keep in  
form also & so must be contained.  
Carbonate not dry as it is  
same as sulphate.

Light Col. reg. is made up in  
cubes in mould with solvent  
on top & bottom. Filled in  
in plastic state - opened on  
slab of plaster & turned  
till dry.

In smoky key is found.  
L & S. fill any mean  
146. key - do - do  
Light is better & warmer.  
Heavy snow blank & greater  
key - hard granules with  
dark spots & green.  
Light is in pieces - long  
broken up -



Monday, Feby. 21<sup>st</sup> 1876.

Chars. In comp<sup>s</sup> of Mg. have in  
common. Chars. known for  
callined Mg by eff<sup>ns</sup> with acids.  
Brom & turmeric - Not afft. by alk.  
Satur or base.

MgOCl<sub>2</sub> - good antacid.

This is for indigestion & acidity.

Relieves the "heart-burn" when  
due to acid stomach. & the  
resulting salt is aperient.

For morning sickness of pregnancy.

For an anti-lithic for urine.

For gout, rheumatism &c.

As an aperient for children apply  
if live not good.

For urinary acidity of an ac.

of uric acid in warm weather.

Dose = 1 scruple  $\frac{1}{2}$  dr. for an

as aq<sup>na</sup>  $\frac{1}{2}$  to 2 drs.

Paper - Liquid Carb mag.  
Lit 13 gr. carb or flint oz.

Mace { (Kud Aug) placing  
the Mf. in water in a  
copper vessel & Cl<sub>2</sub> into  
side glass revolves.

This upon a drug cork.  
Carb. mag. Cozya for  
india

Bit Bio. Carb. mag. Seps  
alluvia & rose water

10 p. loz. cut 2 gr.

cut up & 2 gr. Rimutt.

Magnesium Sulphate:

Epsom salts. Sulphate 20 gr.

Sal Reflexivum. Eit

in rumal water also as usual.

Russite - comb. of Soda & Mg.

As an active purg for bitter

or Dolomite <sup>in bitter</sup> in triles. sept.

Other salts as secum then into  
wooden coolers & hung up of  
the Sulph. mag. Alum & ...

2 name gun to the <sup>sub</sup> subject:  
Gives.

From dolomite by breaking up &  
dign in  $SO_3$  & 2 sulphates  
forms. Sept? of water the  $CaSO_3$   
by more. which the sample of my  
is seen

A more economical plan  
is of using air with the  
dolomite - the same is shown  
down & applied to Sulph of Air  
& Mg. etc.

Characts. small amorphous  
crystals - or in large rhombic  
prisms with pyrid etc. Soluble  
in  $\frac{1}{2}$  of water at  $212^\circ$  & heat  
Bitter rancid taste. By heat  
smells strong. 2 kind of prisms:  
the water & 2 species. 7 eqts.  
water. 2 = anhydrous. Soluble  
by water from water. Sept. with  
balls & with cold air & in  
also etc.

Mind with regard, calm can  
be rising heat to sublimed  
and -

Roller. My Ch. month.

Soda of Carb. bicarb. & Bala,  
& the same.

Operative - Aperient = Salt  
 $\frac{1}{2}$  to  $\frac{1}{4}$  oz - rapid purging  
watery stools. Suffering exactly  
of m. m. No febrile system  
but rather reduces temp. & is  
admitted in fever. = an anti-  
Choleraic. In large doses =  
excessive purging. 2 by 20 grs  
old killed  $\frac{1}{2}$  oz. of it.

Valerian purgative not very true.  
Sark at large &c. for anti-  
& overloaded state of general  
system.

For infamously symptoms. but  
not for typhoid fever -  
Surgeons of the ancient & present  
& after such medicinal treatment.

act. air & such as  
an end for oxygen -

A couple of lat, and a

Spain, Spain, Spain oil & sugar of  
sacchar.

Senna exigua tent. of  
carduus - dose, urine plum.

Pyat of Salut Salts as 'SO<sub>3</sub>'  
lat. & act. K.

Potassium Sulphur = Sal dubius re.

& "Salt of many virtues"

from Volc. regions. from crust  
of lava top. in Mt. Veneris.

In reg. in Senna - Sp. & supra.

In Mil. in to -

Made from salt in retort of tin  
with NO<sub>5</sub> or a couple of  
NO<sub>2</sub> or 30 parts.

Take out salt in ay & add KO<sub>2</sub>

& now suppl. del. but the  
now certand. the add CaCl<sub>2</sub>

now paper full down & add to  
clear light KO<sub>2</sub> & then SO<sub>3</sub>

till neutral - except crystallize.  
KOH, in amount of 6 sides  
precipitate. each precipitate had  
a need for ground - as alcohol  
etc. added to show powder.

1 to 16 parts by at 60° & dis.

1 to 5 " " at 212°. Solu-  
tion no odor. Mixed with  
chloroform. & kept red. & a suspension.

Usual properties of sulphur in  
Sulphur.

Not liable to oxidize - some  
lime or to run and absorb  
if not well wall.

Actions. Small doses  
lower temp. & pulse.  
increases secretions - but - has  
fine present - in 1/2 to 2  
drms. Doses = purgative  
acts on small intestine.

Acts on secretions of milk & is  
useful after delivery of female  
does not irritate & is -

Supp'd a produe mixture.  
but not certain.

In large doses its action is  
A strong, some purging &  
vomiting - Short only &  
floculent - then cold effs,  
blue vomit weak &c. like  
cholera.

Impurities accordg to mode of  
drinking. soft as food water.  
If liquid being about & des  
not in. intestinal. But if solid  
comes into contact with mucous  
sharp particles cut in. like  
glass. Yet not quite analgus.  
A sometimes don't see & do  
than in or a liquid.

Supp'd due quantities & AS as  
an adjuvant.

Good for cases same as M<sup>g</sup> S<sup>2</sup>  
Used with rhubarb, jalap in  
2 of rhubarb & M<sup>g</sup> S<sup>2</sup> : good  
for

In dropping blood to head  
Dose 10 grs 5 or 2 doses as  
a pyrexia  
5 to 10 as a refrigerant.

Not ~~with~~ tart of potash =  
kali tartaricum, et c.

Get from cream tart & }  
diss. & add alk till quite  
neutral - now evap & cool.  
There is that the cream tart has  
an extra eq. of tart acid. So  
from 1. 2 eqs of tart. potash add  
Rauwolfia pruis, clear passage  
also as framules. Sol in aq.  
is equal wt. at 60° & more  
at pt. of ebullition - mild saline  
test, at front heat feet black  
evolving gases & smell of  
burning sugar.

In Sol. after keeping for  
uncolled & some days  
under line - is req. matter

~~2~~



of <sup>forming</sup>  
Leat = 4 1/2 gr. of lead. not all  
of it is of 55 part of Nit of lead.  
In small quantities names -  
Is a purgative.

Might be replaced by calcium mag.  
& S. sulph. mag.

For making sedif-  
Powell salts of iron -

Cream of Tartar

Potassium hydro-tartrate -  
or tartar of Pot = a pin  
of paper & crystals.

Put in into of wine unless

Appl = wine stone, 2 kinds  
White & red wine. Causes for  
the disease that some put sugar  
in alcohol & the appl is with  
sol. in alcohol - also cream  
of tartar & also of lime & etc.

To separate the C of tartar  
take the appl & dis. in hot  
water which takes out the pure  
tartar.

Purify it by dissolving a 2d time  
in the same affg to a good  
sol<sup>n</sup> of all<sup>ing</sup> <sup>emul</sup> only to cool  
suddenly.

Oxyentli tartate from  
~~water~~ ~~res~~ ~~corrosive~~ ~~slag~~  
shyn<sup>pt 500</sup> char<sup>pt 500</sup> fus. 1 lb  
200 and with a 8 of briz  
aq. taste acid. &c.

with lit KO. 2 pounds

(1) with 1/2 pt. lit. "black flux."

(2) in equal parts. "white flux."

Its sol<sup>n</sup> in aq. in acid of KO  
& neutral that Ka work

Brown and same effect.

Admtd. with  $CaCO_3$  - heat  
first of air. & add oxalate  
of KO or acid - Also Sulphur  
Cubr. Chlead &c. of ord. taste.

Racemate of KO & put  
it. Diss. em of tart in aq. (hot)  
add  $K_2CO_3$  &  $CaCO_3$  &  $CaCO_3$  &  $CaCO_3$   
stays down & red color.

Good purgative in small dose. But  
in large - deidid hydrogoue -  
& stimulates the absorbents - Cool  
surface & fever.

& diuretic. but seldom both  
in sample at same time.

Valuable for mild febrile affections  
& diarr. C. T. & spirit water &  
a lemon drink - of the  
ft. cuts  $\frac{1}{2}$  to  $\frac{3}{4}$  in 10 days -

As a diuretic 5 to 15 grs. 3  
or 4 a day. Also a powder  
or with similar other medicine or  
with cubes.

Or when giving 13 in a quart  
of milk - 1 or 2 wine glasses  
now & then.

As a hydrogoue ʒss ʒss ʒss ʒss  
for albuminuria. apply for  
dyspepsia of the scarlet fever -  
for B. dia. with kidney -  
wholly or admixing with jalap.



effluvia - heat too dried it =  
pyroplastic of order of  
acid & base + water.

Let  $\frac{1}{3}$  of  $\text{Na}_2\text{CO}_3$  be -

Actions. Good in case of NaCl  
good as an aperient & on  
urine.

For suppurative phlegm in some  
cases - also to the blood -

Analogy to  $\text{CaO}$ ,  $\text{P}_2\text{O}_5$  in nutrition  
of osseous tissue -

For obstructions to the children  
are liable - white excretions  
are common to old forms.

For gouty cases.

For all cases where other saline  
opium used.

The powder as given in the  
dose &  $\frac{1}{2}$  drachm for adult.

$\text{Na}_2\text{SO}_4$  = Glauber's salt.

Nature in Aude. In mine - ?  
with carb. soda - In plant  
man sea shore.

In process of making cal.  
soda. Ch. for 90.

Extracted w. if acid add Cal.  
soda - but if neutral may  
wash - set aside & crystallize.

~~the~~ known - Cryst. 3 forms  
of crystals - allowed to settle to  
cent. 0. 5. & 90 cent.

= 1 amorphous & 2 polyhydrous & 3 decaying.

1 = ob. oct. - 2 = pyramid or  
pyramid & 3 = oblique rhombic  
prisms. Bitter, numerous

& warm taste - 1 part

divided in 3 cells of 1 part.

Chemical names to be supplied.

Set for No. 9 for 8 & 3

Not liable to deliquesce, is an  
excellent cathartic but - more  
pleasant than used.

As as Siph. Mag.

Infring. supra mag. Siph. Mag.  
on amt. of fluid - 200 in

A glass of water be the  $\frac{1}{2}$  oz  
in  $\frac{1}{2}$  pint water. Action of pain  
in many cases early, not  
after.

Best used in water with  $\frac{1}{2}$  oz added  
& its eff. improved.

Dose =  $\frac{1}{2}$  oz to  $\frac{1}{2}$  oz.

Potassium carbonate = "Rehelle  
Soda salt" add  $\frac{1}{2}$  oz. soda  
&  $\frac{16}{100}$  cream tartar & 4 parts water.  
& evaporate to  $\frac{1}{2}$  pint or till 20 m.  
with resin.

Eff. =  $\text{CO}_2$  dis. re. re.

= = part tart. Side & of fruit.

Crypt. & salts suspended. Sol in

= part of water. eff. re. re.

Strongly heated beak. C. & salts.

& improved from & small of

Caromels. In dilute to soda

evap. & form on all. add ag.

& fine & NaCl & KCl. Then

down & fruit.

Small dose for flatulency &  
colic with some carbonate  
as an effluvia draught. Used  
in 2 drs. of each paper  
for effluvia drink = Lulig powder.  
of pt. color and cry = of  
lin gum 4g pill & a  
dose of saline. For red  
sand kidney urine (for kidney)  
In urine. as a  
carbonate

Ox Gall or bile of  
ox = a thin fluid - dark green  
color - & mucous. It is prepared  
by getting rid of mucus.  
Each bile had 2 parts spirit  
shake & set aside & settle  
& filter. Thickened by means  
of heat = thick dull green  
black - animal odor. alk  
test. Contains coelesticine  
& strum & acids. Saurine is



Rich - Sulphur - Drop  $\text{SO}_2$  acid,  
& play of color - by its use.

2 cords used, 1 not too much  
heat & 2<sup>d</sup> necessary  $\text{SO}_2$

Impregnated or bill food  
as opunt tonic, antacid  
bopium. Left with hard  
feces & is broken up -  $\text{SO}_2$   
food for obstinate constipation.

Dose 5 to 10 grs. 10 or 2 a day for  
this - Also removes constipation.  
As a substitute for an  
nat. bile.

When stools white & they resume  
proper color - Starts cure again.  
1 to 2 grs. of white of oxide none  
of the bad effects of opium.

For chronic liver sluggishness  
even when cannot ascertain the  
cause.

For Green sickness

Dose from 2 to 8 or 10 grs. in milk  
balls.

Moussa = Kibur for "what  
is it" - ? is a secret for trees.  
also "honey" in 1543 that  
it makes out.

In Calabria - Sicily &  
high out of Greece.

2 trees of Faxilus - 1  
F. rotundifolia - like fork  
exuded for leaves &  
encrusted as pellets.

Extracts for stem & branches.  
by spontaneous exudation.

by incisions of warts =  
Zalagori on puncture on  
intubed cuts the bark &  
wood. Pines out on ground on  
into bark. Best of place a  
spontaneous conducting juice into  
reserpente. These account for  
the various shapes - on trees  
sheets &c. Usually in July  
but till October, more in  
the Dog Days.

3 varieties - Manna Calabria. fruit  
 150 in long - usually large size. 3 or  
 4 in thick & 1/4 in thick - with  
 surface concave & discolored by  
 white ex. upper sup. white  
 ex. app. front shows ex. app.  
 = <sup>apt of fruit</sup> Sweet pleasant - taste like  
 honey & sugar - No odor - infuse  
 Sol. in water. ferment with  
 yeast. Kyla price.

(2) Manna incortus, 1 in long. filling  
 approx 1/4 - thick soft & adu  
 & discolored - Best kind on  
 eye buds - some small.

(3) = Picilian Manna - fleshy  
 semi solid. Not spry. body  
 color - white with honey fur  
 On analysis main  
 gel to 2.6 p.c. of mannite. up  
 to 50 parts - solid at expt.  
 soluble - also sugar 5 to 10 p.c.  
 Uses - as aperient for young <sup>infants</sup>  
 for diseases of detained meconium

Dec. 20th & 21st. In  
adults fine view of flatness  
& narrowness.

### Castor Oil.

Nature of the Oil. Lard.

Fam. Scrophulariaceae - grows in  
many latitudes - Size in  
Portia 4000 ft. in Canada  
9500 ft. In Africa 15000 ft.  
at base tapes cupping, with  
hollow. Purple with ab.  
bloom. Leaves red brown &  
undivided - older apud sub  
pt form - Palma Christi  
for teeth & refixis - only  
to 9 ounces. Leaves are  
the fish. finest to increase  
secretion of mammary glands  
used as a fermentum in  
stapes & meat. Inacurate  
in water & soak bread in  
the fluid.

Remained very 20% loss - found  
only for 3 or 4 days - Has been  
very successful - fresh &  
ripening leaves - for green  
peduncles not yet a purple.

The leaves also good for  
purple blisters - for  
very hot & ahead & for  
sores -

Wednesday; Feb. 23<sup>5</sup> 1876.

Castoreum (contd) The ca plants  
flowers in purple - small flowers no  
corolla - calyx 5-lobed.

3 cavities in the fruit - in them  
the seeds from which the oil is obtained

Each seed 4 lines x 3 x 1 1/2 line - grey  
mottled - shape as of ash. Latin  
name is derived. It has ball like  
eyes - has 2 emb. - outer  
seed in - very. Albuminous  
substance inside -

Egyptian seed. Dark & flat  
American (C. oil) is the most  
hardy. Sometimes acid. Fine  
at diff. young & young -  
Worst when green - some  
acid char. when ripe, etc.

### 3 Processes

- 1 expression, 2 decoloration 3 Alkali
- 1 fruit oil 2 water
- 1 "Cold Draw" C.O. groups  
straw yellow transparent,  
faintly pigmented - pecuniary  
taste, nauseous. floats in  
water 0.985 - sp. gr. at 60°  
decolor? Miscible in  
water & alkalis. Wh. of soap  
soap. Sol. in alcohol &  
in S. ether - Exp. to air  
rapidly rancid. Contain  
various.

1 Euphorbia - 2 E. Indica, 3 Alumina  
to the Indians.

1 = E. O. Oleum Myricum.  
Lycop. prot. succ. decanted  
& spread on heat, thick,  
yellow color - Dept fat -  
At <sup>temp</sup> 0°. dried etc.

2. E. India. spread & heated  
till steam rises - decanted  
& settled. paler, mild etc

3. America. ground seeds of <sup>myrica</sup>  
& the heat in boiling app  
& again boiled & continued  
till vapor ceases to rise.

Great care in producing this  
var.

4. N. Indian oil. By decantation  
dark <sup>red</sup> as Port wine - fades to  
color of Balsam copaiba.

Nauseous, stronger than foreign.

All same samples on analysis

2 parts. crystals = Glycerin oil

In a retort & dist. dist. 2 parts

1 thin layer - essential & aromatic. Sp. grav  
below, yellow color like bread, no

odor no taste. Distilled  
with Nitrous acid & dr.

Adrethatis 5, to increase  
<sup>to extract.</sup>  
effl. 9 2 to dilute it.

Test with alcohol for lead oil  
all the Co. will dis. out. only  
other oil more diff.

Properties see from purpale  
Der 1/2 of 1/2 for adret.

In case of epilepsy, distilla-  
weaken, sickness &c.

If not passed off by bowels  
pudor proper means -

Distilled in stone - melted  
Suntius kinds of & looks like <sup>small</sup>  
worms &c.

Very corky aperient, or can  
give some other signs of it,  
as if inlets.

For kidneys & uring passages.

As Aleubar lens bones  
stronger - can be seen done  
after the 1/2 to distill 1/2 of dr.



full size put as 103 at first.  
fine at any age.

Stand comb with the - 2 drs.

Quid of lupus & 6 of C.O. seed.  
Crown oil 10 or 2 drs. & call dose  
if counterpoise sent.

With sp. for diarrhoea & vom  
indign

Suppurum to venereal poisoning  
& hence of name Cantor.

Safe to give for anything.

Useful after delivery - & after  
injury about pelvis - as a tincture.

as sub: for salivary & <sup>Em. of sp. of London</sup> <sup>Em. of sp. of London</sup>

Special uses - Best for Asiatic  
Cholera - Combined with S. Ether.

For Cholera Colic -

For diarrhoea in infants a few  
mos. old - given alone, or mixed

with such on mouth - small  
dose, 5 m. 2 or 3 a day.

As Extinct agt. for the throat & excretions  
parts.

Ad 100h. of *aromaticum* -  
4 20 an. *Lignum* ~~preciosa~~  
with each dr. *conary*  
cont.

On surface of outer belt for  
retaining on stomach.

In compo of *crust*  
calomel pill.

### Aloes

In *Europa* *Asia* & *Africa*.

*Liliaceae* - family. C. & D. =

*Staudia incompta* - *Albidia*  
from leaves. Thick leaves  
with strong serrated edges - 1/2 in  
"How a man ascends".

Flowers one in 100 years - red -

1 *Saltire aloes*

2 *Hepatic* = *Aloe hepatica* or  
*live aloes*.

3 *Barbadoes*

4 *Cape Aloes* - from *Cape of Good Hope*.

1 flows yellow - old comb

& best - *upulata sine*

*serena* -

Imported in large bulk in  
masses covered by skin & in Carles 80  
Now again in London

Lumps of irr. form & size red  
color. Transp. aromatic odor  
proudest - fresh yellow - with  
all sol. in aqua ab. all at

just spent - bent - & crystals. wh.  
(a) ~~Alc. nigra~~ <sup>lucida - clear also</sup> <sup>liquida</sup> <sup>liquida</sup>  
(b) but more glassy look.

(c) rare - from Red Sea - like  
trach. 2 parts - 2 layers.

lowe cryst. upper layer  
Cold feet thick -

2. Alc. Hepatica - from A. officinalis  
Brown line colored surface - fragrant  
bitter + sweet crystals color. full  
reddish mag. brown. More  
tenacious - not glassy - Good!  
in 'reb. spirit. etc. crystals. One  
kind - Boca also - Brown  
black, surface with  
sund. dry & irr. fracture

3. Barbados aloe or gourd  
aloe for being used in  
found small. Best kind  
contains most extractum  
made in way 1<sup>st</sup> 50-gr.  
cubi in 100 of 8<sup>th</sup> = 75 p.c.

Dark brown color same in  
outside. smooth for <sup>partly</sup>  
offered. Broken up in  
& smells like axilla of alutia  
latens. Powdered - is fine  
yellow. Diff. kind -

Mostly secretion. Bark  
for unspiced juice  
for expression.

4. Cape Aloe. Falls & powder  
a granule in air - pres-  
~~erved~~ of powder.  
Home aloe - but not  
used by the Vit. surgeons or  
Drugs.

5. Curacao Aloe - ~~is~~ not  
same in center as super -

full surface - Impurities.

All above out same

way. 1<sup>st</sup> Not excluder or for  
2<sup>nd</sup> inclusion (fines air way)

3<sup>rd</sup> Clap off lens. (to be) in air  
water. worst of secretion  
in ag. opt. exposure. Extra  
close bud as it forms out  
mucilage matter

1<sup>st</sup> Bitter purple for secretion  
of sugar of lead & fitting  
of copper C H N O is  
a semi solid dark brown soft  
violet bitter. sol. in ag. &  
in propyl spirit but not in water.

pt. of S. ether. = Alcine.

Doubt if neutral & reduced =  
oxid at. amine crystals.

Hygrom

2<sup>nd</sup> purple = resinous soft.  
argo for secretion. falls  
down = solid thick pt. out. in

My note not valid as in alk. & S. Ether.  
No. 3 acid pt. = 1/2 in pt. water

Thursday, Feby. 24<sup>th</sup> 1876.

Actions of alveo - My bitter  
a tonic - app<sup>e</sup> & dig<sup>n</sup> imp?  
Large ones = catarrh - slow, in  
15 to 24 hours start pass.

Of fail (as attrib<sup>le</sup>) are more  
In jaundis is bad. Dep<sup>d</sup>  
re irr. in duodenum & fu-  
tus & liver.

On return, <sup>assistant.</sup> to control act<sup>n</sup>  
of portal circul<sup>n</sup>

Supp<sup>d</sup> to cause piles. The  
people of Hawony suffer from  
it in consequence - yet other  
persons think of - only but  
sive at anus. If person  
not dispos<sup>d</sup> to pile will  
not get them but will if  
he were predispos<sup>d</sup>.

Indeed the rapid start from  
var. of pile is improv<sup>d</sup> by it.  
Especially not pain & tenesmus.

In females the uterus is soft  
also sympathy. Not suitable  
for irritate uterus but will  
big on menstruation. Also  
act of absorption -

Abetic pill in a wound or tr. on  
carried bone big on purging.

Warm feeling in taking it.  
first in upper right side then  
down and on left.

Act on large intestine & on  
Cœcum & colon -

Old times does come very large. - Now  
25 & 30, only & if want more  
give something else with it.  
42 gr. in some, more has many.

As a diuretic with alkalies.  
Good against worms. - Ascarides  
in the uterus -

For bilious complaint -

In proper use pregnancy & for  
uterine cases. - or for ir. bowels  
& Cœcum -

useful in menorrhoea - &  
for other diseases see Dr.

Prepar. powder. hard to  
reduce it. Drop a few minims  
of sweet oil into aloes when  
powdering it.

Extract. 1 lb. aloes & pull.  
water. boil 4 hours - &  
let stand 12 hours - decant  
& soap till thick - & dry.  
& done 203 for. very bitter  
red with iron.

Strained Aloes - melt & strain.  
Larger done requires - superintended  
odor.

Ammonia of aloes with KO.

2 classes according to

1) Salteen aloes & Barbadoes.  
2) Pills. A. roses in soap  
pills - good against

2<sup>d</sup> pills of aloes & acrifitina

Does 103 pills = for dyspepsia  
& for females - Antispasmodic



for men's patients.

2<sup>d</sup> pills of Alas & myrrh. (with  
saffron & red roses) same dose as

(2) 1<sup>st</sup> Liquid with colicynth -  
Alas liquefied saffron 10 &  
only water.

Dose 2 drs. & 2 oz.

for females - in constitution.

with compound iron mix 2 or

3 adg for anemia.

Linctus Alas. liquorice &

Dose 1/2 to 1/3.

~~Alas~~ <sup>Vinum alas =</sup> Alas piper & saffron  
same dose -

Alas used in comp. pills -

Barbados Alas

pt<sup>l</sup> pills - hand soap Alas &

2<sup>d</sup> in wine S. In a hand

saffron & red roses -

Alas in comp. - gamboge pills.

# Colocynthis

From India, Turkey, Syria &  
Herbage like the cucumber -  
Report a pound size of  
an orange same color red.

Kind - soft at length pulp  
inside - hard & porous.

Internal bitter taste - "bitter  
apple" good paper but to  
opine - ~~slow to water~~ has.

Darkens face in eyes.

2 kind (1) Turkey (2) Malabar  
10 lb used in medicine - always  
peeled. 2 x 3 1/2 in in diam.

28 prep 72 seeds -

(2) in Cape fruit & has some  
skin on - bright yellow  
smooth skin pink -

Analyses: (1) bits purple (2)

resin. 14. Fat 13 of 2?

Paper = br. rest. work

with water - divide in spirit  
scops. Now extract in brandy  
trout - extract plate. With  
No. 1, rain out.  
Rain in flask not sol. in ag.

Colic Actions of C =

Smart - purge - common.

Eff. - severity - for  
stomach & anus.

Large dose - pain & irr.  
- in vomiting & bloody stools.

Redd. - have destroyed life.

Appearance of stomach & bowels  
- liver & kidneys & bladder -

In small dose - frequent.

Large quantity - Dr.

Christian says -

Combined with hyacinth

its purging diff. -

eff. - in cold - so of complexion

& sugar - Also to be used in use

2 drs & 1/2 oz olive oil.

Even rubbed on skin of abdomen  
to produce purging -

Aloes alone is open  
& C. is not tonic altho' bitter  
Purg was attained at this.

Less heating than Senna -  
might abate any ~~as a purg.~~  
Preparations - Compound ext. C.

C. aloes, { Steamy, soap,  
~~of spirit.~~ Has a dark  
frenck black color, hard

of tact. After with rect.  
spirit. trit. into blue  
pill mass,

done 5 to 15 gr. Dose  
use it if red. food to

ad = Blue pill 7 dr

Colocynth 1 dr

Ext. Myrrour 1/2 dr

Opium 6 gr

roll together & make up into pills

2<sup>d</sup> - Compound of C.

C. aloes & Steamy  
with No. 803 & half clove

not a fruit added sometimes.

Dec 15 3 pills each 885

ps -

Dallap - = Dallapa  
from its geographical place.

Not known to ancients.

1876 from Mexico on E.

slope of Cordillera - at 8000  
ft. from surface of sea.

Various general names - Novi

Exagonium purga

Not used by Indians but another

kind of Convolvulus was

found as ord. I search <sup>!?</sup> Stamens

5 Stamens the pink reach

to top of funnel of flower.

The stamen or enegy

not size of conulent & fish

(but very big ones were brought  
to Europe in masses & balls)

dry color - dark black or

with hairs & granules - Stimulant

has very <sup>fruit</sup> strong <sup>effect</sup> action, will be



Yellow powder sweet, In plant  
fragrant small umbony.

Kind = Oval & granular.  
True & false jallap. In true  
there is mass of - which  
is false even of Jallopinie.

"Cockat hat jallap" =  
fine shape of dried galls.  
is the white jallap - false  
jallap. Another false jallap  
is fibrous - dark outside &  
wrinkled - much divided up  
to of it - "woody jallap"

Another kind is  
Bojumbh rose scented jallap.  
Ext. exhibits mag. depress  
white color with dark center.  
Very starchy.

Rubbed with warm holes -  
is now stringy & a piece  
become the worm cut out  
the starch - I leave the jallap  
part behind.

Monday, Feb. 28. 1876.

Dulcific. contd

Actin purple in resin. old  
of dry drying & again dry  
Resin of galley. much like  
solid. like examine. but  
differs in being darker & with mix  
with milk.

old - with common resin. dry.  
Salap resin known of dry test  
in powder. by its color & color  
changing to yellow brown.  
2. sub resin = Salapine 84  
p. 9. & 13 of Salapic acid.  
the latter is semi-solid of  
brown resin distillate &  
bitter taste. In presence of  
alk. both & there has been  
given & there causing explosion.  
operation = a sure & safe preparation  
of small quantities.

In passing the duodenum  
passing on. First a  
kink of sucking on. In 15  
after on abdomen - 1/2 in  
right side on down.

Flattening - on. In 2  
hours after taking the contents  
occur - very frequent  
to children as well as  
adults. The more fine  
the bands & a larger  
the efflu. & v. r.

of fat in present, less efflu.

Expts. with 1/4 pr. pills of  
gallap. 2 one with 4-4  
waxenly 8, 7 or 8 do. 2  
after this action less but  
more pain &c.

In large ones slight watery  
stools - distinct if combined with  
action of K.O. Res like  
scarcina. Diff. is that



the Calceo clears away the internal  
sinus. Both useful -

Differs from gamboge - by less  
acid & requiring large doses - Gamboge  
and its numerous const. effects.

Solid, often given with camphor w. sugar  
& by regimen -

(1) Mallopin as is. fulvum - brown  
kupij finds it - Dose 10 grs to 72 drs.  
alone or with calomel but not  
now - feet quite good -  
Kith does also -

1 fr. for each year of child  
2 yrs = 2 grs. 20 up to 20 grs.

(2) Compound jalap. or Green  
Latin epize. Dose simple  
to 2 drs. 5 times a day -

(3) Compd extract of Jalap - Slice  
tuber & rub w. soft. reduce to  
ext. - from amount. Also, Dose  
of - Dose 5 to 10 grs.

4 Lincture Dose 72 to 2 drs. added  
to business 10 "Sh. Dose at -"

# Pedopholine

Plant from Canada.

Long creeping root - densely  
covered - 2 or 3 ft. of stem.

Leaves & on bear claws

the leaves. at 2 of July  
is the flower - Racemose berry.

Knowledge of it from Indians  
who used it with purple

& dog wood - as medicine.

Root - red - has reddish brown  
color. nodules. long fibers

for it. like some other odor  
like species. Chew for long

time & acid taste. powder

greenish yellow color. Name given  
pedopholine - dark brown color

when bitter. } No. red

No. violet then purple &

yellow & brown. The name

pedopholine given to powder  
purple & the resin also.

unfortunately a long way

of making this any pure  
run bands. Resin not m.p.  
found 5 to 10. run if appt.  
with one for the other no  
eff. or too much.

A salt of lime is in  
needle shaped crystals in tuft.  
Calony with, also in hydrate  
can. resin. also tiny columns -

The resin is the most imp.  
- Resins pedunculati

1 lb root 3 part root part  
of. exp. to break. add 3  
times break by 9 amount.  
exp.

3 p p. c resin in root. = present  
brown color. fr. unmen, ab.  
pud is brown.

A cream and powder with bitter  
almond of od. under N.Y.

Aetionis useful purgative  
like gulas but is clone. ca  
3 hours after apt to continue

eye not so certain.

Operate on eye as well  
as small intestines - study  
in glands. pt. should not  
use sweetmeats & sugar  
fruits. N. Cl. &c.

Of too much paying fine pt.  
live fine, own with &c.

Is indicative of fine with  
Eysenius, belladonna, Jones  
powder.

Is a useful Halcyon - especially  
full bladder. & inflames the  
hepatic system. I had  
first found most bilious  
but no bill as full bladder  
empty. In liver disease  
if it is congested.

for gout.

for an attractive water  
= "Vegetable mercury" Dr.  
Marston & I received  
it for several times.

- Dose: 1/2 to 2 grs.

As a emulsi-<sup>on</sup> - & - or paper  
paper in preparing it on the  
conjunction & irritate.

Dose of grs. 5 to 10 (powder)  
grain 3 grs.

As a pill with or pull in.

## On Prescription

Formulate for pills.

R

B. Podophyl gr XII

A. Ext: Calceo C 3iss (1/2 dr.)

.. Hyoscyam. ʒi (1 scruple)

Mft mas. in pil XXIV divid -

Sig: Sum. more dict. (mistake in bad writing)

<sup>Sumendum</sup>

B = base. A. an addition C. a correction

A & B may be diff. forms of the same thing  
members of same genus of substances.

B = the purpose they to give.

= Scaiffu combinations.

Should not prescribe as per  
M. together make liquid.

S & Che. of CO. esp. in  
Cere. & S<sub>2</sub> impure.  
Pores with acetate also set on  
bone & ppl. them.  
Some extract harder on K<sub>2</sub>CO<sub>3</sub>.

### Rhubarb, "Rheum"

= old name for biga Rhin.

Very old - Corneil writes.

Levins - W. of Caspian sea

E. of Caucasus will

N. of Alta MS.

S. of MS of Hudsonian.

Medicine Rh. for 700 miles  
beyond British India. East-  
information not yet out?

R. palmatum

R. conjugatum

R. actinum

R. capicum

R. flodii

} diff.  
} species

ye e

Post in W. is used.

C & O. ~~At~~ Polyandria Monogam  
Cut in Greece. long in drying  
best dried under shed.

Superior found & ety on  
outlook of sleep -

1 Russian -

2 Chinese.

3 European.

4 Less frequent varieties.

Notice for W. will remain a  
few evident each day.

W. name address -  
in City extra.

Qualifications.

1 proof of his name in 1 day of  
used - for 3 years. by repeated acts  
& class. tests. & for 2 years at  
college - also except saying  
provision as a 53 - all tests

but for 2 years must be excepted.

2 tests in class - aft. cut of in that  
Honal. test. & 1 case of female.  
Mistake tests also.

Tuesday Feb. 29<sup>th</sup> 1876 -

Rheum Sericeum = Turkey or  
China Rhubarb. because it  
comes from China via Turkey  
Is largely used - some  
Russ. prob. have an effect  
apart as in infants -

Chars. in various  
places - some smooth  
surface - bark in traces.  
prep'd by knife - smoothed  
rubbed down stems as for  
slices or - about. rubbed  
off outside, nail connects yellow  
hole rounded as if by rasp.  
Apr. Area of purple or br.  
color - extl: with rim dark  
dividing - aromatic odor.  
Arid & disagreeable taste. The  
more fruit the sensation on  
chewing the better. The plants, ex-  
cept that price -



2<sup>d</sup> East Indian *Merulius*, also  
Chinese, <sup>via Canton</sup> -  
2 kinds. (1) <sup>Prunell</sup> *Prunell* & (2) *Merulius*  
or *Canton*. (1) & resemble  
the Turkey *Merulius*. Similar taste  
compared & denser than *Prunell*.  
(2) *Canton* pieces more or less circular  
round or globular. Drilled hole  
for a thread to stay up & dry.  
Usually soft & not gritty. usually  
darker surface - discolored *Prunell*.  
In air & *Prunell* not sharp. Light  
inside than out. Cortex all off.

3<sup>d</sup> Kind = English. from Oxford. *Prunell*  
*Bambard*. 20 two eyes - 2 kinds.  
flat & in sticks (but) same  
diam. *Prunell*. round & smooth  
Outside dusted with *Prunell*. Sold  
by Englishmen bread up like Turkey.  
Peculiar varicosities, large at one  
side smaller at other. Not  
filled. fr. red lines with radiating  
arteries. *Prunell* the length of 1/2 inch of Turkey *Merulius*.

2 star kind = the White R.  
exposum

Salty Hingula Rhubarb -  
Main diff. classes

of rh. with medicinal etc.

In ancient times a rhubarb  
and such had no purgative  
effts.

There is also a rhubarb which  
some are used for making  
fire salts.

Antitratum = powder  
of severe in action. this.

With tumeric may be used  
as a tonic.

Principles = 1) a margarine.  
many constituents.

(2) Alum 3 sub acids = hls  
br. & red: amygan<sup>2</sup> chloratin &  
<sup>3</sup> erythrotine - All sol. in Liq  
potassae

(3) Astringent principle = gallic acid  
in a state of modification.

with presence of iron - a br. br. &  
not a blue color.

Aromatic part very small.  
Color matter - an acid nature  
Phosphoric acid or Chrysothoric  
acid - crystals yellow. Sol in  
water yellow by acid. Violet  
of alkali.

Saline comb = Ox of lime  
in cause of <sup>the</sup> pit. 35 &  
40 p. of it - but kind. For  
3 or 4 p. of it. App'd crystals.

### Actions

In very small dose = astringent.  
Large = purgative cloud mild  
& yellow of oxidation coating  
tongue. In intermediate quantities  
astringent. and more or less  
of albumen. canals. Opt. on urine  
out. Should easily be found in  
urine when it turns if acid  
deep lemon yellow if alk. red.  
If try to all paper diff. into it & if

the paper held in 2 part: it looks

to <sup>be</sup> ~~more~~ <sup>more</sup> ~~not~~ <sup>not</sup> ~~the~~ <sup>the</sup> ~~best~~ <sup>best</sup>.  
Lucky is ~~stronger~~ <sup>stronger</sup> - ~~1/3~~ <sup>1/3</sup> as  
strong as Lucky -

Not so severe as ~~else~~ <sup>else</sup> - acting  
not so decided on return & does  
not so heating.

For jaundice in not by ~~cut~~ <sup>cut</sup>?  
to small ~~with~~ <sup>with</sup> ~~cutting~~ <sup>cutting</sup>  
seems.

For Diarrhea - ~~sluggish~~ <sup>sluggish</sup>  
line - ~~not~~ <sup>not</sup> ~~plain~~ <sup>plain</sup>, ~~st.~~ <sup>st.</sup> ~~chem~~ <sup>chem</sup>  
fine size of ~~tip~~ <sup>tip</sup> of ~~paper~~ <sup>paper</sup> -  
Saline helps - its action is  
more prompt.

For Gout between ~~paroxysms~~ <sup>paroxysms</sup>.  
food ~~dearly~~ <sup>dearly</sup> ~~fine~~ <sup>fine</sup> for ~~disturb~~ <sup>disturb</sup>  
stomach. ~~leg~~ <sup>leg</sup> ~~fine~~ <sup>fine</sup> with  
Sulph & ~~carb.~~ <sup>carb.</sup> of K.D.

fine at ~~commence~~ <sup>commence</sup> of ~~seems~~ <sup>seems</sup>  
complaint. with ~~leg~~ <sup>leg</sup>, ~~am~~ <sup>am</sup> ~~creta~~ <sup>creta</sup>  
& ~~late~~ <sup>late</sup> with ~~comp~~ <sup>comp</sup> ~~each~~ <sup>each</sup> ~~power~~ <sup>power</sup>.

Preparations. Rheum \_\_\_\_\_

Made in via cruda  $\frac{2}{3}$  but  
any soil & found.

Dose as aqft. 203 ps

2 253 ps - ones.

3. fixis mix.

4 Comp<sup>2</sup> rh. pill <sup>supra</sup> mixt.

albs. <sup>supra</sup> soup trutta &c.

5 & 15 ps. man & 153 pills.

5- In this - rh. & port spirit.

with cardus, <sup>supra</sup> &c. dj.

for 14 ds. 15 1/2 3 - 7as

aqft for 1/2 & 1/2 ds -

7 Dose 1/2 d - 30p. per pint.

aqft } & make 203. swallow at

for } in dose. Stop diarrhea -

Distillat } Symp. rh. colicid subd.

dj. in spirit - more than

current & liquor added decoup

Dose 1/2 & 1/2 d. for cur

for adults 2 ds & 1/2 3 -

Scamone = Scamomium.  
Lactuca, little tree.

Rare form of its medicinal

Crownwort scamomium  
from Turkey, China & Ceylon  
Sambor & Siam & Sillap.

More kind smooth. It has  
an arrow-shaped. Flowers unlike  
any other medicinal plant - are  
bell-shaped & yellow - Root  
small tapering & woody  
2 or 3 ft long. Shrublet - cold  
but. Juice fibrous. From  
the root the concrete juice  
or gum resin is obtained.

The earth is of any for 2  
or 3 weeks the cut roots  
& pin flour out into seeds  
& put into an old book  
where it dries & hardens.  
Sent to Surinam &  
is the only & adults with

chalk sand also in & exposed.

1 Virgin & Spunon Lesmore

(1) eggs in case on down lined with lead. is in by lumps made of large ones. wh. lth chalk = calc. cov. and it presents in color. If rubbed with water or saline water - mine etc. mlt. - odv. lth. ches. - lth. better & acid. Eyes. spiracles & ring & formulae. for young cells. fr. - shaggy or vitreous - Variegated compound cells & to brown by mic. crystals - splinters on top. 2. 210 is ~~to~~ inflamed. Kids = 1st. Chalky - heavy - effervescent both out & inside. Spines dull grey - made up in flat rect. 1 basis - mixed with starchy matter = caseous - farinaceous - Less dull spangly color the fine case. Beneath evident with sweet pers. Farinans seam is brown. full of air cells - don't ant. off. bottom under 3rd = brown color.

Purpura = Racini Scamoni.  
made of eggs in alcohol in  
lyti cups for 24 hours. Then  
reduce to  $\frac{1}{4}$  vol. of resid  
of spirit. - then with water &  
a resin of filtration - purify  
by charcoal -

Best is white yellow or. with  
very dull & little Scamony.  
Red Scamony 77 & 88 p.c.

Info. S. 37.64 p.c. C.H. &  
& more than any other  
resin for medicinal purpose.  
At Guyacum is lighter it.

Actions. Cathartic - skin purify  
and not confined to small intestines.  
more decided. May irritate &  
not more bowels.

4 grs - grs 4 & 6 doses.

full not used for external  
20 grs. Same for small  
cavi flattening. 8 grs. resin =  
18 grs of powder -



Hard to say what is exactly the nature  
of Scammony.

Common Scammony, 3 lbs. (but - very)  
any form.

Good for round worms -

Utes. same as jillap. more  
pleasant to take.

Papava

Common Scammony - found. Don  
10 to 20 grs. Less for -

very few color - falls on gut.

Pursh 1 - Don 20 to 30 grs.

North of Scammony - 4 grs. resin

& 2 of muskine milk -

rob. emulsion & all at 10.

pleasant to take.

Confectio Scammony, gives

very weak Don (soft to 10).

give with 10 to 20.

Coupled with Scammony (with jillap of 10)

Don 10 grs & 10 grs - 1 cup ex 1

Scammony also use in. Colocynth, 2  
coupled with C. 3. pills of C. & Hyacinths.

Scoua = Peua.

Very old remedy - various  
sols. all of genus Cassia.  
Leguminosae, free per  
leaves, carbot on upper side -  
several ~~points~~ leaves - Leaves  
not opp. nor same size.

By drying some nauseous  
small purging function -

Leaves ~~very~~ long with 2  
1/3 of row? - fine up -

With spirit br. tr. - Leaves  
have peculiar shape C. thornia,  
C. cuminata, C. elongata. Another  
kind C. amara (= amara) all  
from the east, Egypt, India  
& one kind from E. India.

Thursday March 27<sup>th</sup> 76

Alexandria Senna -

~~Leaf~~ Leaves much broken up  
some green color, some of keeping  
odor like old tea. nameless - also  
parts of stem - flowers & fruit.  
Leaves = pod. pods much than  
leaves or add<sup>n</sup> of little impurities.  
at Mont = part of Cairo - slight  
Cut & dried on rocks near sea -  
& 5 parts - lavender & 2 of  
dried & 2 of leaves  
In Alexandria fresh. Such  
is also argem leaf wh. of

Senna unguis on sides of  
river, in argem leaves same  
& reach same depth a fatish  
on underside, is more stiff &  
the Senna. & is covered with  
exudation - not the Senna -  
also flowers wh. or white. Senna  
yellow - fruit = follicle or pit.

Said to be also a cathartic  
& modify its action. Not  
not so purgative - almost inert

Superior Indian  
Long perfect leaves. from  
Cassia elongata 1 1/2 in long  
& widest - same size  
one on each side - not stained  
nor mixed -

Alcea or mocha (Ind.) same  
Shorter leaves - vary in  
color grey, yellow, brown, red.

Worst var. of Senega -  
But to select most broken of  
for per adulteration.

American S. = S. Marylandica.  
either sep. or packed masses.  
Very large & size of Indian.  
faint tint. The pressed variety  
trium nit cakes like dyetaria.

Principals - Cathartine  
= C. H & O. as n. Solid &  
amorphous. Regis. amount

from air - yellow red on surface.  
Sol in hot aq. & spirit, not  
in ether. is neutral - emits  
acetic acid & from sub.

Purp. - Impure senna & cast.

Lead - Strain of H<sub>2</sub>S & HCl - lead  
decolor & concentrated I have a  
mass of carbon & KO. This  
except S<sub>2</sub> & red spirit.

Alumina ferrous in it decomps.

color due 2 H<sub>2</sub>S from a  
pung - Layer & see number.

Vol. odour purple also -

Actions - Purgative, also obnoxious  
in H<sub>2</sub>O not true - Specific

influence - acts on bowels & to  
super as app. & abdomen -

Eff. in 6 hours. is absorbed to  
blood. mix of ferrous ferrous

infants - Stand apt senna -

Solid dk. brown. Others that are

light cold - blue or not crushed.  
Alumina expd mixture fine crystalline

a old blue pill, salt &  
rhubarb. Of alone Dr. W.  
found the fruit here, & the  
other as salt thinn. entry.

Scena in news out  
fuge but nausea, vomit  
sipping - even odor of urine  
give sickness -

Compare to other purgatives -  
cliff on small intest &  
muscle cont. - Dose for  
jallap. not so rapid -

Kind best = abscondin:  
2 to 3 of Indian -

Preparation - 1st Dose =  $\frac{1}{2}$  oz  
 $\frac{1}{2}$  dr. sugar &  $\frac{1}{2}$  pint  
hot water. Dig. for 2  
hours, cover vessel -

To take it (Cold water info. treated)  
get out so prompt as  
to hot, when stools out to  
purgate resin. Regas

not to be used after 3 days, fresh.  
at a little (18 or 20) of hot. No  
to make it keep - I presume  
take use tea or prunes. Gripe  
Coleander prunes etc. - Should not  
boil the mixture. Dose 1/2 to 2oz  
every 1 or 2 hours till cured.

Black Draft = mix of salt  
with Sesumia with confetti  
of carduus - or an.

Sack = 1/2 dram - powder Sesumia  
2 crumlin & calceolus &  
6 oz water -

Linctus of Sesumia -  
Caraway Coleander etc.

Dose 1/2 to 1 1/2 oz -  
Pectoralis Casani Sesumia -  
Dose 1/2

prunes - figs etc - 2 or 3 drams

Syrup of Sesumia with powder  
of 1/2 of the  
day - less powder - 2 drams

6 lbs - with 2 lb of water  
to 1/8 of water - not spiced,  
Chamberlain on 1 to 3 drams -

Gamboge = Gambogia.  
No. by Quercus Gambogia 1603.  
No. Scam, 22 Ceylon.  
No. Spur mountain.

2 Lepidodermis gambogica -  
Part of tree - size of orange - yellow  
with lobes - Crown on top - N. & S.  
White & so inside - Sweet  
when mature.

Scam var. <sup>tree</sup> not known -  
Part of leaf & self the  
insipid pin for claws -  
On the back of sharp  
stone. As it hardens in liquid.

Or leaves trunk fr. or  
stripped off - or pin of back stripped  
off - pin not causid -  
Or wounded in shape - of  
hollow of a bamboo cane -  
white gamboge - with hollow  
in center or side. of only  
a small gulf & kept revolving  
till hard - or pin of left alone.



or by working up in hand into various  
masses like cakes of butter or  
a lot stuck together -  
1<sup>st</sup> Siam gamboge = bent -  
in cylindrical sticks - smooth or  
ribbed on outside - Col. yellow  
or drab, Alg. hollow med.  
Fr. conical, or in flat circular  
cakes which is slightly curled -

Ceylon rare - in irregular masses  
of adhesion of small particles - dull  
orange tint - mottled <sup>on surface</sup> fragile -  
Fr. cells or depressions with light  
ground or drab in the - Small  
pieces in market -

Gamboge owes activity to resin  
& gum. On solution of water dried  
by water. Gamboge acid in  
flat orange color bitter acid taste.  
Sol. in Eth. Spirit, not in aq.  
alk. Test for gamboge  
Take pill stick it in alk. yellow  
a row of white aq. seen of dry yellow color

*Saccharum officinarum* green  
Aerobated yellow -  
faintly blue also yellow  
orange hue = faint or light

*Strychnos clypeata* (greenish)  
G. Scarcely sol. in water. but  
affl so only as infusion. & it  
is bitter - bitter taste (fish sweat).

Actaea *sage* *fragrans* -  
Some four or five. don't know  
how much. too much - in  
3 1/2 grs does not nausea  
nausea & flatulency. 2 & 6  
stores. 6 grs. dose, cutting  
vicious faintness & exhaustion.  
No perceptible effect. 10 to 15 grs  
= a contra-stimulant.

Does not purge so much  
in inflammation of bowels <sup>upper</sup> & lower.  
in 1/2 gr to 1 gr. small dose  
& is a diuretic. Acts on  
muscles coat of intestines.

quereu ~~impur~~ will turn brown  
made out ~~by~~ - ~~congruities~~  
cells at alve - most in small  
interstices. food for tape worms.

Paper 1st grade, Doc 3 pr.  
Eyes weakly colored & - but  
promoted by guzacum &  
seena - fine with alk.  
substance - Alve alone in  
part of juv + so much food.  
9th hour - watery secret.

Pillulae sanguinis caps. =  
9th alve. caps. - eyes en  
to 15 for dom.

Croton Oil = Oleum tillii.  
in mod. 170 emb. & juv in  
1820 - from Croton tillium.  
In Jar - Sub Bone & v.  
4th. 1st oil. fruit has  
under seed size of hazel  
nut cones - shape 15  
calk cell.

Got sawney on Castoril.  
Expanding & resuscitation.  
By 200<sup>th</sup> sud. 50% oil, &  
now around 200<sup>th</sup> & 10<sup>th</sup>  
p.e. now 200<sup>th</sup>. Castoril =  
attier, guffy - pale red  
brown. ~~trifl.~~ - blunt, mild  
in cold alcohol. But in both  
alcoholer get 80 p.e. red<sup>ish</sup>  
on cooling -

On maintenance of a beam  
eff. for anophyru all  
along along canal -  
With alk. for at. exp  
at low exp.

2 units 1<sup>st</sup> & 2<sup>nd</sup> sud. oil.  
2<sup>nd</sup> British oil. Bent =  
Indian. wh. is in part -  
pale straw color part obs.  
of Castoril. when shola with  
low is but. of oil is red.  
but is if hot but on cooling  
died in low. ~~at. exp.~~ - ~~red~~

Friday, March 8<sup>d</sup>, 1876 -

Castor oil cuts. Give with Castor oil  
but to mitigate it off you write  
alk. a soap. op. does not mitigate  
it. rubbed on skin same efft.  
as if mouth. Its effts are  
sudden & seem as lasting  
effts. If pt. rubbed liniment  
of it redness of skin & outbreak  
of pimples which increase in  
size & number of four follow.  
In 3d hour a pound Cornmeal  
slough - yellowish - surrounded  
by dentate red ring - being  
pain. swollen until you  
swim. If not again apply  
scab & fall off in 15-20  
days. Spot cured & broken out  
by a styli area or fine silver  
wire or been applied. Thromb  
cutlet, has touched them with his  
hands but still after using hands.

As due to absorption  
Uses - In Obstructive  
constipation - in remora  
hard scibilia from Colic -  
Again when sudden  
symptoms arise <sup>also</sup> for  
Compressions &c.

For Excitio & for headache  
actua. neuralgia partialis &  
fortis dolere & sentia. for  
inflam<sup>t</sup> of head & of throat  
with laryngitis symptoms &  
for abundance of pus sent  
from Dec 15 3 Days - In  
small quantities em<sup>l</sup> & drop  
some names &c -

In one case a child  
swallowed a sperful on a  
loose starch - purged &  
did recover.

Antidotes from & access in  
copri with. mixed tea  
emulsa - sp.

As an astringent, 1 part oil  
with 4 of syrup or 9 pt. water  
1 tea spoonful 2 or 3 adg.  
The most useful prep. =  
elect. 1567 S. & L.

For Ehr. br. cut. p. l. g. n. g.  
also for outside of knee joint  
in the chronic cases of joint disease.

Review.

Crotone acid & Crotonine in Croil.

Internally = drastic hydrogog.

Externally or -

Monday, March 6<sup>th</sup> 1876.

Eleutherium - Fr. "I compel".

fronds in robust heaps - the  
archiploids = Wild

Cucumber - put 2 in long -  
fructured midribs - green &  
warty with spines - When  
ripe & apter at stem  
end separates & allows  
seed to escape <sup>self</sup> - shortening  
of the cucumber.

Cut & cany - seeds not at  
first the back - green runs  
around & outside this  
areolar cellular tissue  
& outside this again fluid  
part inside rim - When  
water this fluid & endosperm  
pres. inside & when pedicel  
off liquid flows out & seed  
& now the resiliency or  
elasticity comes into play &



seeds fly out & up 20 yds.

Each before one enough for  
one doz or 7 to 8 grs in 40.  
1/2 or 2 drs. "Squirting cucumber"

The etheric - drugs of  
the juice. A little of it is  
transpt - but  $\frac{1}{2}$  of components  
into 2 parts.  $\frac{1}{2}$  of crystallizable  
& fine laminar form -

Diff. quantities - collect the seeds  
carefully before ripe - forming  
poor quality for want of care -

Purify & excise longitudinally  
so that fluid drain out &  
deft. collect drw & = ethereal.

1<sup>st</sup> & 2<sup>d</sup> = bent & inf. - (1/2) for  
fine which stand not on 2

leaves. juice yellow & thin  
down bent & with  $\frac{1}{2}$  2<sup>d</sup> juice.  
in 4 to 8 hours longer.

Geographically 1 English & 2<sup>d</sup> Madras  
1 Sup 2<sup>d</sup> & 2 inf. small plants  
like nitrate pier. and up to eyes.

thick as nails. yellow grey  
brown - and surface  
marked by same as paper  
and dried - small like  
cryst. plan bits &  
acid. But fine from  
white color. W. gr. in 1/3  
water not pungent &  
not sol. wt 1/8 gr.  
wt = domestic. E. alba  
2 Superficially - dark  
oliv color thick bits  
of paper attached, forming  
hard, with pieces of paper =  
E. myra -

2 E. Mutton = at the root  
marked over & center yellow.  
Addition of some fine  
chalk & of blue - same -

Value of thick, growth  
cont. pubic - for seed & fine  
prunella ant. dried in spirit  
best most 10/6. 1/2 pint.

form = 1/2 or more i.e. 10 p. alt.  
2 per elect. white flames -  
odor eryth<sup>r</sup> seuna.

Rho. test = absorption of only  
spirit. of No hot thus done  
20 p.e. of org. ut. to it  
evnts. 20 p. purple.

May contain starch, n. or.  
Chem. alums = ~~alt~~ elaterine =  
solv. strongly neutral. prisms,  
satur. loy. marks, small  
fr. melt in flame ut.

cloud acid smoke. is except  
1/5 fr. in capsule of ut. in int  
1/5 fr. turn to avert killed - 22 hrs

Racine with Elaterine. Absorbtion  
tests, in spirit, equivalent  
to if can't throw into boiling  
a conc. no salt

1/4 or 1/2 p.e. in test. In 1/2 hr  
or unt. kind 4 & 2 p.e. 20, 25  
or 30 p.e. do part in E. Racine  
and 8 p.e. with purple from elaterine  
to int.

Spa doctus - conyctus &  
montis . suavis & .

Workmen who make it safe  
for industry since 1848.

Involuntary act on almost  
could be to be as a mon-  
= doctus & hydrogogorastis

cannot be used as a

a mild aperient uterine

oil. Copious stools like

water in the most tried.

Switz at Egyptus:  
eructation & flatulency.

Swells of acids & pains.

Depression & debility not

common. Two days after

found that of pyrexia

for several in hand &

some are sweetly - fructus

crustas about mouth & lips.

Violent action on rectum but

expulsiō & tenesmus.

Uterine here for strong pts.  
give with other medicines don't  
not stop act as they still  
subside, also kidney.

Used on 1st or 2nd  
or comb with cream plants  
1/2 gr - 2 doses of cum cast. &  
5 or 10 gr of ginger. - 10  
in 10 or 10 pms - give 2  
before sleep, 1 <sup>100</sup> pm & other  
& 9 again in morning.

At 1/2 or 1/4 gr at <sup>night</sup> rest  
on board small but brief  
trip to small <sup>1/2</sup> gr -  
print in the air.

2<sup>d</sup> in Lake 1/2 in 103 of feet with  
30 m. 103. Don 20 or 40 m.  
Large dose from - deatrophic  
2 1/2 grs in with 16 <sup>1/2</sup> &  
ended in death on 3<sup>d</sup> of age.  
1st dose - violent infection of  
small intest. bil 40p. &  
cat. from 65 - antisept.

For  $\frac{1}{2}$  skin - ps.

For fevers

For ascites - not if found green  
or red. but if brown  
& fixed - not for  
dropsy with heart disease

For dropsy from cold & chill &  
for scurvy or renal disease.

For general dropsy in anasarca  
on calf. anasarca & anitis.

Best as a purge & purge with  
stools every 2 days. also

in anasarca. Best by  $\frac{1}{2}$  oz for 2  
weeks. Pl: aff. & debilitated.

As an emulant & counter irritant  
as in dropsy.

Class Diuretics or Urinics.

medicines for empty urine  
expelling it - 2 sub of forms.

Fail of medical diet as urines  
thick with calculi - or retention

of urine from suppurated cones =  
to stop further. to remove.

Sp. pr. uni = 1010. 57080 in  
Lent & now Diurus very  
unlike grā to uni. Or uni  
the way. Am 4 classes

1. Pencil hydrogen (anastus)
2. " " different (on uni)
1. Spots on cortex of kidney
2. " " " " " " " "

Both affit. to cells. 2 on those  
within the tubules -

1. Pencil hydrogen an fur  
reple hydrogen as, paper, paper
  2. " " " " " " " "
- acidity of present. but, are  
weptis -

Rhubarb. In part is small  
of violet & blue - cicutum.

Some of this matter. Unaltered  
& negates as citrus an transfer  
to Carbamate -

Action cannot be left of sponge  
in<sup>n</sup> in organ. <sup>Hydrogen</sup> state, more  
remotely. about & quantity

Stomach re 9 sep<sup>r</sup> -

A renal deposit again, in  
textures self affly. pyruic  
decompos = removal of waste  
matter & critical & high &  
or thrown off. In fact stand  
but it is albumin putin.

2 class = 1. Absolute

2. Relative

1 in all cases, sure & true  
more water. Are uncertain.

Reason is that for in my  
morbid cond<sup>n</sup>. Absorpt<sup>n</sup> is  
be actin. of infused water  
fail as in dropsies are  
almost inert or moved  
as if turna pump on  
vena cava or liver or  
heart pump. from tribut<sup>y</sup>  
blood. but if pumped  
for this an certain,



2. Diff as it may appear we  
can remove the particular  
disease present. of kind  
or foul pyrexia. Antipyria  
& temper pyrexia remove cause  
allow kind to act.

2d as diminished supply due  
to want of tone & non-tone  
or stimulus required - 3d all  
medicines wh. induce atrophy  
are relative depletives as  
alkalis &c - medicines wh.  
force are also of this class  
of due to gross morbid &  
irregular constitution.

Nitrous Spirit of Ether  
Sweet spirit of nitre or  
dulcified spirit of nitre.

℞ ℞ 1 pint rect spirit 303 <sup>℞</sup>

℞ 203 <sup>℞</sup> & 203 <sup>℞</sup> & 203 <sup>℞</sup>

Put into retort. & Rectified

& 12 oz drate of & cold &  
the 1/2 203 110 203 more



Tuesday, March 4<sup>th</sup> 1876.

Hydrobromic Ether = E. hyd. chlorid or <sup>acid</sup>  
= a prep of a chem comp. - { <sup>Disid</sup> 1735  
Faint narrow, clear light color  
sp. gr. = 0.794 - Distills with  
alcohol. inflamm<sup>ble</sup> yellow flame.  
Boiling pt. 151° Agitated with H<sub>2</sub>O  
& white etyl &.

1 part etyl & 2 of red spirit &  
distil. is a stimulant - Some  
false. used in Syria.  
As S. ether. Dose of etyl  
= 10 m to 1/2 dr of weaker spirit.  
2 1/2 to 1 1/2 dr -

Acetic ether = E. aceticus.

Acetate of lead or all say acetic  
& SO<sub>2</sub> & alcohol & product =  
a. ether - colorless, faint  
effluvia. sp. gr. = 0.89  
Boiling pt = 161 - mixed with aq.  
forms a white diacid.

In dropsy after scarlet fever  
& anemic erupis. Don  
+ ... H<sub>2</sub> ...

Acetate of Potash  
Kali. ~~Chloride of Potash~~  
as a ant. prodant in  
serum & joints. Lewis &c.

Made from dilute acetic  
acid & Carb KO. Inf. not  
removing out till saturation  
taken place. Test paper.

Not to be confused with  
free acetic acid. No  
excess of alkali or salt  
or acid & crystallization & salt.

Best use of acetic acid  
& dilute water. seen in  
long bars. wt. water - long  
marking. like of formation.

It can alk. water. now will  
deliquesce easily sol. in water.  
has. cold water only.

Acted as  $H_2$  gas of urine &  
No ~~was~~ saw it.

Adulterants & Sulphate. Carb. Albs.  
(~~then~~ & tests -)

Concave & visible different  
Anuric. After 2 hours of it  
& aft. found in the solid contents  
of urine. Urine dimorphic  
fimo & abn. testus. Heat  
& fr. pres. - sperient.  
but causes fermentation. & not

found purgative. Alterative.  
Purges morbid state of blood.  
Restores the alkali blood.  
e.g. & Carb. of  $K_2O$ . in blood.

Used for Rheumatism  
Used in 2 or 3 dr. any 4 or  
5 hours <sup>day</sup> at night in sp. pill.

Also a purgative now & then.  
Rheumatism resolves itself in 6  
weeks proper diet or.

For skin diseases & Dr. Egan  
of Glasgow -

For *Chumirena* & *caute* - for  
*Scutellaria* & *py* with  
*Alptatis* - Done 20 no. 57 Dec 1844

Chlorate of KO = Potassi Chloras.  
Oxidum of KO. Made  
like ~~that~~<sup>Lodri</sup> of *potassium*.

Ch. gas trapped to KOag.  
till satd. - rest 24 hrs &  
concentrate & crystals out.

KCl. also produced but  
remains in *dry* after the  
chlorate crystals out.

Also prep of *potass* Ch. into  
Cut. present in with *sublim*  
in addn *wh* later the  $CO_2$   
from the KO  $CO_2$ .

in *2* sided prisms, nearly  
brilliant, hard. Dissolves in 2  
parts, but not *mentol*.

Properties <sup>rubbed</sup> with P. explodes -  
With P &  $SO_2$  against P. *bluish* of  
& upon *water*. Acid prod  
in it. yellow flames.

White at sugar & on coffee  
flour, combined with  $\text{SO}_2$  brms.

Adults, calcas impure,  
or other acids.

Actions. Coardination. Intully  
albroten in small dose.

Opus in actum on man. of  
mutter & forces.

Thoylt & ma restoration &  
blood. Mixed with vms ben  
tens & arterial tint.

Depress hnt actin &  
albrn rapu in large dose,  
bringt furi in epigastri  
Death even.

It by other - some mutter  
red fume or -

Controls neuronal function.

Uses. For affeg mutter. tyrosin f  
ff. dmsa tyrosin of onis had  
fms hnt. For dysthuria alone  
or with vms. as H. S. H. C. G.  
Case for 10 to 20 grs. of salt mutter

Dis. 2 Dis. in boy with a  
ad tr. myxoma or syphilis  
for dent. f. u. l.

For piles - presents tuberc  
in legs but cannot cure.  
Substit. Linen expectorant.  
of oz or 6 doses by tea & honey  
nut soap. if in 2 Dis.

For chronic br. & whooping  
cough. In. cutaneous. Supplement  
cut about 10 or 15 - given  
by with specific urin-  
at night.

For typhoid & typhus fever  
Solu. with Sol. - compound  
of syrup.

For low seats of cystitis  
as erythema if dark color  
swelling epivitis. &c.

For cholera. Saline treatment  
= Carb Soda No. 11. & KCl.  
Dose 5- to 20 grs. - ~~very~~ as often  
as required.



Sat. siliceous layer & char.  
No. Dry paper & skin  
treated with  $SO_3$  fumes. Spores  
won't sprout about - burn on  
skin & form clump. Does  
not irritate pt.

Nitrate of Pot. Salmon nitra.  
ad = nitra - nitron, nitram  
or - ancient called diff.  
thys of this name. Sat. silice  
is a salt of the rock - found in  
barly to read or - found  
in soils in Egypt, Persia  
& Spain. Malabar to Can  
of Kentucky states of it  
In India it is made  
of ruffs for efflorescence  
found - except of wood ashes.  
Funnel of mud & clay false bottom.  
After effluor wood ashes added  
to water & crystallized out.  
The dupts = Cal  $NO_3$  & Pot.  $CO_2$  &  
of water dupts to  $NO_3$   $NO_3$  fund.

45 & 40 parts infusio. large  
of water & crystallization.  
cold n. a 8<sup>th</sup> time in London.

Dimorphis cyst. in 406  
sets in solution & reprecipitate

soline taste of lemon.

mountain tetra plate.

Aquon & equo fusio.

Solui card & not agr

3/4 20, in 10, set fusio.

in water. It is a mixture

of the same.

In water, gum powder.

Moulded into cylinder form =

Sol. fusio -

Adulto Supp. col. & Cus

Actis 1/2 & 2oz fusio

of fresh without water. It

is a mixture, but by the

use of 1/2 3 apt to be formed.

In moderate quantities

in water & in water

Demands of the of urine for 1010  
to 1030-40 - Alg. m. Hart. aut.  
~~But~~ thought to infer blood.  
With hot urine - is an experiment.

Was thought to infer to red  
corpuscles -

Of uric acid the efft. on epinephrine  
is uncertain, paying ex.

Use For sensory supp. the first drying  
of No. 2 blood - in Navy. If  
not better than gum powder - But  
experiments showed it was water.  
For a drop as a diuretic  
with then top. When kidney  
is not inflamed -

For mild inflay. dist. a certain  
influence. In case  
of subcut. uric acid.

For rheumatism - acute - slow-  
acute inflam. rheuma. 4 to

203 in early water. But not  
for forming clear in strong  
18. read Ignorant - Kuec & Co. 18.

In fever, as an antipyretic  
Dose 5 to 15 grs. 3 or 4 a day.

Balsama Capivi

Trees of genus Cepha-  
Lepurum - In Brazil  
&c. - most for Solu near  
Cartagena - Sp. = Cepifera  
Effusata or Maka a herb  
in the thick bush & wood -

balsam exudes - Effused  
copious. Lat. rolls. in 3  
hours. If no run wound at  
once stopp'd & at 8 hrs  
aft. come out.

Chr. = Liquid yellow  
Chr. - lyon - at age = 5, 9, 8  
usages by small plates =  
Dis. in alch. S. etc. when  
ag. with alk. chr. seen  
in surface to air & 2 1/2 &  
in gum resin = tupl. ovish

Dis! The is wt. of calc<sup>2</sup> mag. of  
spid on a tile &  $\frac{1}{16}$  pit wt.  
of mag. spid on it. note  
both pills -

Vanils = ("Broyille" & W.  
Ludi

(1) mont egulle oil & i  
fruit.

(2.) Fruit - reddish br. color.  
Useless - upst stone,  
juice -

Nuts on true balsam (see  
Culm - Burgoi and) etc  
no Burgoi and.

Vol. oil & Resin - (aliv.  
Resin) lit. atq. - 34 tri.  
oil & 45 - resin. Can.  
sp. of distillate - wort.

Vol. oil mixed. Resin  
sp. as balsam etc. Dis.  
P. S. or. Sal. in CS<sub>2</sub>.  
Setts clear in alb. Also  
enriches in paper.

Sorts in it like top. as  
with Cl. one part fungus  
out of camp. - gelatin  
Don 5 to 10 m. or - capsules  
which is said to saturate  
Albenta pt.

---

Wednesday, March 8<sup>th</sup> 1906.

Recd of Copin. 2 <sup>car.</sup> kinds.  
1 copin. aird. hard and firm  
scales sup. yellow - nuptial  
odd & (2), <sup>extant</sup> dark brown  
color. In all samples airt  
1/2 & 2 p.c.

Adults not made - probably  
with 2 to 4 of by 10  
& 10 or 12 - 100.

Adults full size. Septe  
tion of appts narrow  
& no trace of it. On  
bowels unpliant, fungus

Abd<sup>o</sup> = etc. of arterial system. Del.  
blood to surface. Communication  
is for kidney. I secreted  
bilious & may be small in  
breath of pt. The kidneys  
dark but I more numerous.

Char. l<sup>ta</sup> ab<sup>o</sup> v<sup>o</sup> v<sup>o</sup>  
of N<sup>o</sup> - etc. & of organ out-  
diff. is no well diff. the  
compulsat<sup>o</sup> diff. tho' all the  
of v<sup>o</sup> v<sup>o</sup>. Suppl<sup>o</sup> act on  
water & water & thus suppl<sup>o</sup>  
is useful for gonorrhoea.

Any a man who ~~is~~ had  
open in water - part can  
& rest not. Action on gut.  
Also as an expectant. Accid<sup>o</sup>  
for gonorrhoea, a rash on skin  
& form of the ~~to~~ rash. Diff<sup>o</sup>  
a small part. febrile  
disturbance. Occasionally head & sup<sup>o</sup>  
resting headache etc. hemiplegia.  
An ~~case~~ carried off to hemiplegia.

Said to have power of purging  
the spleen & stomach or  
bladder. a kind of retention.

Uses properly for early  
stages of gonorrhoea.

Give in solution doses a  
grain or 2. Dose. Usually  
use of it & Cyperus for  
the spleen, cough, spots  
& leucorrhoea & of it for  
Also as a remedy with leucorrhoea.

Useful in hemorrhoids - in  
dysentery with mucus  
also in dysentery &  
anemia. To clear the  
urine of mucus.

For rheumatism after  
gonorrhoea &  
for dropsy of limbs.

Bacon or Book  
Barocina from foetid Chloro  
diozema. Native of Africa



C. Fort Hope or Natal. Dr. Bee  
first at Dublin. Same kind  
leaves small curls & at the  
from green on top, pale beneath  
Rim & apex dots = spots of vol.  
oil. broadest at centre & rounded  
at ends. Cats urine smell -

Coiling to wrym -

Active purple to hot dry <sup>prop</sup> spirit  
(1) Vol. oil = straw color <sup>trans-</sup> on  
center. (2) bitter purple yellow  
W. color in water -

3 kinds of leaves. betuleana.  $\frac{3}{4}$  in  
long. betulicite 1 in  $\frac{3}{4}$  Castanea.  
 $\frac{1}{4}$  - Shapes & points of leaves  
differ. All described (suborder)  
edges also differ, 1 edge & tooth like  
centrif. 2 fine divided & pointed  
= "fine regulated" as name implies  
3 tows. 1 unit fealty 2  
fine nerves. 3. knots on leaves  
= follicles.

Used as diuretic - Hydragogum  
Urinary urine smells of it -  
Acts on mucous of bladder.  
In stomach. Sometimes  
used for tonic & stomachic  
agent. Always given in  
small doses for chronic  
gout. Appears to act as a  
sedative.

For infl. of kidney with pus.  
Usually given with other  
similar gals.

Peperis = sugar of lead in  
fruit - dry at 2 hours.  
Done 1 in glass 2 or 3 of  
2 fluid ext. Done 1 to 2 dr.  
3 Tr. = 2 1/2 oz of fruit per pint.  
Done 1 to 2 dr.

### Paria.

= A S. American remedy.  
"Frank root" of German  
on acct. of act. on bladder.  
Dioscorid. monardii)

(Quercus, means 2 rows on right. plants)  
Paria = Spanish for little wine.  
Dwarf - fr 3 to 4 in & age 6  
fr 4 in to 4 ft. Dark bark.  
+ stem. Dist: © Corti. etc.  
with radiating lines - to Δ sub &  
specy's = cut end of medullary  
canals. Shade light & keeping  
bitter sweet taste. Rata root.

A cycellin purpura

whi sol. in ag.

Operation, like that of Buen act  
on mind generation apparatus.

In eye dose diets -

For old heads offers segment  
on old forehead. 5 percent  
Dose of m. m. for chronic  
kidney pain. 2 for red sand  
found - For foot hours the  
tendency to renal diet.

1/2 root 2.7 part hot. ag 2 w  
1/2. Dose 2 drs to 1/2 oz 2 or  
3 add. Chop up root & juice

tr. + fland - + pericard m3

+ 3/4 Dose = 1/2 & 2 drs.

Butter { usij long gently <sup>of water</sup>  
reducing & too adding alcohol.

Rhus or rhutops.

French name -

from N. & central Europe.

Gr. & Roman supple & resin

Amphosoxon in 1150 &

king's seal for Planchon in

family.

3 to 4 ft high. Woody stems,  
streaky stiff curving & bark off the

leaves small. Low simple

lyth. 2 to 1.5 by. red hair.

golden flowers butterfly shape.

oblong samaras seeds. tops

used in sweet. bark 1 fresh

2 dry. 1 bud on 3 lute

2 not well, little lute

2 papers 1 leaf on resin

4 infu. Clot up & pour on

bark and 1/2 pericard.

all results & stand in a class by  
} *Quercus* is a *Quercus* *galea*  
Died - a solid in plants of  
tup. deep yellow color - hard.  
- *durantia*.

2 *Sp. Sp. Sp.* obtained  
from another liquor of the  
~~the~~ pill. *corp.* & died of *coll.*  
& *di. di.* for *alcohol* - Is  
*crystallizable*.

Dr. Pitts concludes an *alcohol*  
is a strong form of *uracine*  
~~but~~ diff. for *the* for not  
by *acid* & *long* *separation*.

all in *spinal* cord, *suppl.*  
*uracine* *uracine* - also of *uracine*  
*uracine* - In *large* *does* *deads*  
the *new* *cuts* - *depression* or  
*recession* - *layer* *don* *fault*  
*recovery* *muscle* -

(*Acids* *crystallizable*.)

*Durante* *ch. will* *intake*, *uracine*  
No use in *kidney* *dis.* of *uracine* - *Dis.*

of heat but not of the circulation.  
Best for chronic cases due to  
clayed blood -

As an aperient, no advantage -

As a diuretic gives 1/2  
pint of urine & 1/2 pint of  
urine <sup>or</sup> 2 hours till all catharsis -

With other diuretics we  
cannot tell what effect.

Extract dose 1 to 2 drams.

## Traxicum -

("Dandelion")

Native of N & central Asia  
& all Europe & India in  
America - Compositae =

T. officinale, many forms.

Single stem with erect upright  
leaves 1/2 to 1 foot & 1/2 to 1 1/2 in

in diam. crown of white flowers  
pines on each side - eyes  
black yellow for mid eye.  
The quality pure for drug.

no dead odor bits taste. 76 pe.  
loss on decoction. Dark brown  
& wrinkled especial curran. Ser.  
Ant & callosities. Beaks short.

Root diff. fr all other.  
fr entire root 3 parts.  
bark thick & of sept. zones.  
Dents on leaf. Skin & flesh  
in Auctum blue. Ant. gone &  
inside is woody gone - no  
mudney came nor pith.

Adulterants } hawk pit.  
Diff. by ~~size~~ &

Leaves of dandelion skin  
hoir pin ("dens leoni")  
hence name -

Analysis Lebetodium. juice  
diff. smell & same - best in  
Nov. in Spring too watery &  
in spec. Anyt. su is bitter

Prof. Bury says much or  
small curran - Juice.  
compared to clat & plain.

Plat = leontodum - 2 kinds  
(1) Teraxacine. put of long  
pieces treat with aq.  
add aml. chole. ppt. act.  
one decal & add acet.  
fluid & etc. & S. und.

Liquid impure & give  
& dist. with S. etc., crystals  
of Teraxacine. wt. only  
look for - by other separate the Teraxacine  
for Teraxacine

(2) Teraxacine fine residue  
on treat with water.

Teraxacine long used  
as a diuretic, also as a  
tonic & holiopyon -  
in 1875 - decided that no  
action on liver, and no  
tonic & no Teraxacine  
shows it is a diuretic  
& liver tonic.

For dropsy when eyes of  
liver cut.



Fragrant

2. Sassafras bilai yopu

u. Cinnamon. r.

3. Sassafras

1. Sassafras, Dou 2 to 4 oz.

2. Sassafras juice 1/2 to 1/4 doz

3. extract. - Dou = 5 to 15 gr

Thursday, March 9<sup>th</sup> / 76

Cubeb

Pepper. Bh & W.

Seeds crushed. Spicy aromatic  
odor & taste

Principals - oil = oleum cubeb.

Chars. c. H.C. odor yellow color

well not strong paper.

Ph. affor 5 in theos dent thick m.

Dose 10 to 15 m. = concentrated

Cubeb. Resin - 2 parts

1 thin & 2 thick, 1 liquid grain

riter return. 2 dark brown

semi solid mass, mass with

agr. - white grains.

Cabbeine = same comp<sup>o</sup> as  
Spermi. Sord. &c.

Extractum mallei like Spermi  
Action of cubeb. ʒr & dr.

Same used for pepper at meals.

As when given on local  
ring pain nausea &c.

Always promote circulation  
Is a decided diuretic &  
smells of it. Act on muc.  
of diff. parts. In large  
dose sets up inflammation.

scaldy in aneurism.

Vertigo headache

Chief for gonorrhoea in its  
early stage & chronic.

Must use large quantity.

Natives use the drug. Here!

2 or 4 drs, & ady & llye drs  
Alum with 1 dr cubeb &  
ady for. With copiba for

intermittent - stays - good for  
hemorrhoids - I gave it  
treat <sup>Computation of</sup> ~~of~~ ~~serum~~.  
For dyspepsia etc. - For leucorrhoea  
& for chronic inflammation of bladder  
but doubtful.

Take 1 lb creamed berries  
& 2 pints water & put <sup>1/2 day</sup> ~~2 1/2~~  
down <sup>1/2</sup> & 1 1/2 dr.

### Diaphoretics

= for promoting perspiration  
to & remove it, and always  
free on mucous.

They have temp = soft flaccid.

2 cases - 1<sup>st</sup> - August etc  
incurable - Diaphoretic

Seneca = Senecioideae

The name of a very small, and  
faintly red. - It contains  
a balance between the mucous &  
the skin. cuts by of four wet  
& v. v. <sup>except legs</sup> ~~Widely~~ ~~pathetic~~ ~~and~~  
one above ~~function~~ of the other.

M. m. under action  
and ~~lun~~ skin -

Draptonius act & coal  
Hypothymal ~~fine~~ functions.

2 classes.

1 Stimulatory 2 Sedative

1 not for fever as from heart  
2 produce first depress & return  
heart's action.

3 modes of action (1) specifically  
on cutaneous vessels. All  
absorbed but connected

ex S. & Guayacum -

(2) increase circulation by acting  
on heart - ~~and~~ ~~the~~  
thus that also ~~the~~ ~~parts~~

(3) under respiration by  
relaxing as antispasmodic. Shows  
found Cartwright's action.

In presence put in diff.  
dilatation as of & expansion  
the ~~of~~ operation of ~~the~~ ~~organs~~.

Op. itself is a diaphoretic when  
mixed w/ op. Woman also  
could be <sup>depressed</sup> harbored in trying to  
form this of op.

Great care as to change of  
weather in giving these remedies.

Surfactant probably flannel or.

Hot drinks at same time  
• hot cloths increased. & Remove  
layer by layer of cloths. Cold  
drinks to be forbidden. Also  
narcotics.

Should not surfactant  
cold thro's w/ <sup>and</sup> flooring or.

All medicines under this section  
have been already denied,  
a dr. op. epic. Am dr.

### Expectorants

Promote removal of phlegm from  
br. tubes. also mucus.

2 kinds. (1) All Expectorants or  
stimulants or diuretics & aid in removing  
from passages.

Are the actuals?

(2) Inefficients. act in opp.  
way - as when to thin or  
coater when low diff.  
to remove - <sup>to</sup> lessen quantity  
as mil. acid.

Expects oppo. to relieve  
cough. but cause diff.  
Cough = natural way of freeing  
lungs. so anyth that wd  
stop it wd do harm - pt.  
might ultimately die of asphyxia.

Cough may not help legs  
at all. as neural, stomach  
and, arms & in uterine  
or nervous or hysterical -  
now wd be fully to give  
expt. Suffer pt. has a  
been down to soft passage  
Wd use to give of. n. p. m.  
no - get rid of the brain -  
Cough med? = pectorals.

# Beuzoia

From a tree in Boreas, Sumatra  
Fr. = Exudation from stem &  
branches - Tree must be 6 years  
old & free from injury. It for 6  
to 12 yrs. It is annually - Linn  
of 2 ft. - Fruit 3 years old.  
I had 2 foot 13 berry beuzoia  
192 } incision & split for  
back & having - 3 for  
bills split open & found in  
center - is darker & not so  
squeaky odor or taste.

(1) Blain. (2) Sumatra

(1) in ir. incense & var. cogit.  
oral berry <sup>valued</sup> like incense - fruit  
mild. of this kind very  
brittle. inflamm? smoke & powder  
on surface of paper & beuzoia and  
not spicy flavor. Not like  
cinnamon - (2) in long large  
nut-like blocks grey or olive tinted  
Open for 1/2 of bark twigs etc.

Exp. 47. In a tin vessel  
2 Benzoin Acid.

A benzoin. Put in 2  
ozs. 1 heat & precipitate  
1<sup>st</sup> coming. From 6  
pts in iron vessel - heat  
of paper could on <sup>of paper</sup> done.

Large quantity of benzoin heat  
close to prevent the sublimed air  
dropping back. Note color. On  
small scale use size of  
bean in a brown paper  
& mix a cone of white paper  
in jar etc. Care not  
to heat too much now sunny  
col. brittle. If water  
stain yellow & moisten  
from the volatile oil  
drain up. (2) { precipitate  
in lime water & cone & add  
Alc. & benzoin in there  
down & collect in paper.  
Repeat set cone.



From huppini and by a sugar  
and.

Chens beautiful. among melting  
wt. without heavy. <sup>800</sup> 500  
wt. water 1 to 5. Ready in  
all cases & put better.

Warm spig taste not  
so sweetly pure. if oil does.

My oil of troy paper.  
Wm. mixture for cyseric acid.

Uses in 5 gr. dose stimulates  
heart. on kidney = diuretic.

Charged to huppini acid in system.  
Ant. urine of HCl, small dose  
with fine huppini acid in urine.  
Is an expectorant.

For morbid state of urine - was  
suppl. & dilute stone in head.  
Kills for red acid.

For chronic pneumonia & air Pills  
2 gr benzoin and 3 per se salt  
Coma. 7 & 20 lines

For South breaks up deposit.

Is a gentle & simple remedy.  
The properties are cooled.  
Purple milk or Lac viridis.  
3 grains <sup>with a little of</sup> in 1 or 2  
absorb. 3 in each potach  
but each with other  
menstruum -

Monday, March 13<sup>th</sup> 1766

Actions of Beuzin -

Of stomach disordered action  
more marked in small  
doses. It dyents in blood  
and in other humors & clays.  
So dropsicities & excretions  
is stimulating expt. this  
pulle. Ad Relis Composita  
in tonis ventis & etc. in. p. 10  
De over dos nancu de.  
For chronic Coughs & etc. & p. 11  
in Serpularia p. 12.  
For increasing appetite -  
For curing catarrhs of the p. 13

For cough - 1 pt of severity holds.

To stop of colour -

For diarrhoea in Simulii some a share  
been used. Less irritability  
of bladder - First give <sup>a course of</sup> resin  
or then the benzoin -

Crisp? to of benzoin for cases  
of small size - if not contrary.  
Resin helps to form pills.  
For wounds - not advisable if  
first intention looks for.

10  
to for 2000 adg - Crisp 4 =  
Resin above because of gum  
acc. - Don't 1/2 to 2 drms -

of resin with aq ppt edam.  
Yolk of egg good to add.

### Balsam of Peru & P. peruvianum

For mixed use

P. Per: Proximum parira tree.  
In Curtius Am. Leguminosae.  
long pod 6 in. long. Straw color.  
Stalk. Wood round & white

Henri confertus sad.  
Med. form for juice.  
but later off 2 or 3 h  
5 min. & slight. In the  
stem a ring - Fire around  
base of tree sap into ring.  
Now another is made  
the till all sap out =  
10 or 12 days - Rays tried  
in aq. & with 9 & 10 ml  
Chol now = thin liquid  
at. with ray. Det. from  
pumpkin (the old) Temp.  
after - of p. = 1.105  
warm with tooth. Or  
in the region. Dis. in cont.  
of nit. and reaction  
1000 neutralize 75 Cal. acid.  
Not liable to decompose in air.  
Adults not common. Adult  
needs to be a plant oil  
(with which may be added) of  
alcohol. The water is up  
on test.

~~Cymene~~  
~~Essence~~  $\frac{1}{2}$  lb of  $\frac{1}{8}$  O.  $\frac{1}{2}$  lb  
benzoin acid. Dissolve in spirit.  
add  $\frac{1}{2}$  lb + distill with HCl.  
Quam acid. in pear plants  
= ap. only. ~~from~~ ~~fundamental~~  
only - ~~from~~ at  $250^{\circ}$  & ~~vol~~  
at  $560$ . Warm agreeable taste.  
No odor in pure open. Salicy  
cut spirit also in alkali.  
Same action in eye as  
benzoin acid - to ~~benzoin~~ acid.  
As an expectorant, stimulant & for  
mucous state of urine. ~~cut~~  
or action as benzoin acid  
up to 50 grains in 24 hours.  
Oil of ~~bezoar~~ of ~~Peru~~ = ~~not~~  
cut = thin Dublin liquid.  
action vitat. ~~drift~~ of ~~cut~~ &  
2 lb in alcohol. Another  
various ~~cut~~ also.  
Stibium also. action of alk.  
effluvia.

In small doses very  
Active, = 5 to 10 m. stimulates  
Stomach & intestines by mouth  
stimul. or. Truly a mild  
stimulant.

For Chapped hands. Chopped apples.  
best in ointment  $\frac{1}{2}$  oz. dr.  
= 103 permanent. For  
pus from ear 1 of oil  
of pine or of oil of fall.  
a few drops into eardrum  
2 or 3 times a day.

For malignant ulcers.

Oil of Cloves.  $\frac{1}{2}$  dr. h.p.  
 $\frac{1}{2}$  dr. of pine. 50 of put  
80 m. Oil of Hel. Mentha  
2 or 3 times a day.

For baldness ointment.

1000. of oil. & 2 dr. Camellia  
& 2 dr. olive oil ointment

Dose = 5 m to  $\frac{1}{2}$  dr. as  
emulsion best (with alcohol)  
mix & give

Balsam of Tolu ?

Collects in S. Am. of Ecuador.  
Most in wet season, rising  
air. 2 kinds thin & fat liquid  
balsam + 2, dry hard.

1/2 tapping tree & allowing juice to  
collect in (2) run into vials &  
dried there. Appearance varies  
to season. wt. opaque.

Adm. to teeth. Color peculiar.  
Same chem. comp. as B. of  
Peru - Same uses -

Pyrene = Linzi Tontana -  
light pale yellow - water milky.

Pyrene tontana of ad. of Pyrene.  
uses a flavoring ingredient  
& seeds more greasy.

In 1000 to 2000

1/2 to 4 of unit of part any Pyrene  
Storax (or Sturax, Styrax)

By Turkey det. Plant Styrax  
officinale. Same Case ode.

Collected in spring { preserved  
set skin for 1/2 hours -  
I found the bark &  
set juice. Scents =

- 1 fluid = strong liquid
- 2 Saliv " in mass
- 3 tears " "

1 most valuable & pure. of  
fruit syrup consistency. Change to  
pale or tint. tropical thymus.

Agreeable smell. Sol. in ret.  
of spirit. Melted & strained =

~~styrax odoratus~~

2, in vit. form & wt. very  
pale reddish or color fr.  
olus impurities. bark, leaves &  
fars = pale red or. heat =  
liquid. Sub. found acid.  
like masses

3. In small fruit - fruit  
head to small umbel - is  
dark the bark, purple &  
inflamed.



Chem. Comp. = 1 Guaiac acid  
 with out of balsam - 2 Vol. oil =  
 Styracine being a solid & distill.  
 differs from oil of Balsam of Peru  
 is colorless. stimulating. No grey  
 mark on paper. 3. Raisin -  
 Syt with sulphuric(?) acid set etc.  
 4 Styracine = a solid - dis? crystalline  
 readily decol. KOH Styrone =  
 liquid & uncrystallizable.  
 Action. Tubercles similarly start.  
 Dose 5 to 10 grs.  
 Compound pills of styrax = 2 97  
 100 grs of <sup>the</sup> mass.

### Island Moss

from the coast of W. coast of island.  
 in bushes. found in lakes,  
 charred on surface, hair on sides  
 Tops reddish. Some oval birds  
 = genus of fructification. Little black  
 walls with <sup>net</sup> <sup>net</sup> Cortellio's  
 test. Dose 6 to 10 grs.

A solid and stable fruit.  
Not only in South but in  
Spain etc. Is a common  
vine in the plant - add a  
few salt grains & a little  
Copper green. Seed ab. 1/100.  
Anthers and fruit etc. ?  
fruit under fruit - wh. small.  
Chlorothalic and anthers - &  
anthers -

2 kind of starch in the mass  
from 2 layers a blue &  
a yellow - mixed - green -

had a an excellent  
& equal tonic. Bird with a  
improves appetite. Of stupor  
or alk. only no tonic power  
with an excellent.

As an expectorant for chronic Catarrh  
influenza - & typhoid. best for  
croup and dry. Best as  
a decoction or a lozenge.

Jan: 203 worth put off  
Bil. exp. till 18th. p.  
2 or 3 tobacco for 50¢ a day.

## Lignosice

In the plant -

Named - for being able  
to remove that with the  
same.

The root is what is used for  
English iron plants. - Shows the  
the run of the wood & sap.

for color - Entirely light  
yellow - wood is sweet.

glycerol - Lignosice  
not crystalline solid clear

yellow plant. Lignosice  
an extract & essential. as

an extract for the eye, in  
apparent of the eye. In

eye, large into eye.

Root for Decat: of big down root.

In a sample 2 1/2 drs in 4  
oz of water - Sule red  
it says - Acuf & Conf  
Spini - Dens & - Juice  
Also used for stomachs  
disten - for heart trouble - a  
little stops it. also for  
dabitis stops or allays it.

Tuesday, March 14 - 1846

Gen Amoriacum

Umbelliferae - from Europe Asia  
Olympia - sent near Europe & C.  
But not so - see for Persia &  
for Barbary. Found for  
a thin juice the fine part  
as of an insect. trunk, stem  
bark & - of an insect  
with a putrid <sup>at</sup> base.  
Juice therefore thick & is  
scrapped off - 2 clabs -

1. Corolla or bird shaped  
- small round eye - pea & double  
bracket. Petals white - ins  
at oppose length. ma  
all more - no pink  
all is well. but it &  
small more - but with  
rain. 4 or more  
open like with - & pin  
same when open.

(2) bud or lump shaped - more  
from dark color & impure.  
fr. mouthed br. at se. more  
rough in smell & taste.  
Cher. also. 3 upst. - vol  
oil from resin - oil is  
from resin - vol at end  
in alk not in water from v.  
Yell very bent & prof  
of fruit. Resin also sol. in it.  
Green had & brittle <sup>dry</sup> - same  
method as to cutting or utility  
of from ammonia -





Uonium - in various states.

In tobacco etc.

Uses as a stimulant of the  
low sensitive system as in  
a typhoid fever - or for  
aphasia - or exhercise -  
is the thing used with  
air or antih air.

For gastro-enteritis with  
bilious fever - in small doses  
with Hyems. etc.

For circulatory system - especially  
in large doses after violent  
spasms. In various cases  
of heart valvular regurgitation  
of aortic. for aneurism  
of aorta. for dropsical  
oedema. As an expectant in  
croup - its later periods -  
when false membrane has  
formed. It is said to find  
between membrane & layers  
dilates it & disengages it.



First as in case of 94  
in small

For Diarrhoea. false  
membranous.

Dose 2 drops 4 or 5

Infusion 103 root in 1 pt of

Dose 1/2 to 2 ozs.

Decoctin of birch infused.

same dose - in N.Y. fluid

extract. 1/2 to 1/3 of dose -

Medoquine - = a med to  
produce catarrh in  
suspended. Was supposed to  
cure uterine. But is  
now maintained. 2 sists united  
few up to parting & reunited  
find distant. Cures even  
to both but this part seen that  
unites not in case. Are  
not united under any act  
on its vicinity. Praries are  
at least maintained.

Shedding at each term of the lining  
of the uterus - menstruation of ovum  
from follicle in vesicular - Epithel.  
lining of uterus. <sup>Albuginea</sup> All identity  
on ovaries.

2 classes (1) <sup>(2) Dependent</sup> ~~Dependent~~  
Gonorrhoea - Menstruation & female  
under subjects - do not  
- from any other source  
along period - Menstruation  
in part reason - as system  
suffering from sympathy -

Also that the suppression  
of menses not due to  
pregnancy - Not for  
white cords of system.  
The suppression upon organ  
disease - as phthisis -  
suppression that had rather  
due to suppression of menses  
but to <sup>phthisis</sup> & <sup>phthisis</sup>  
use - Abs of cause -

Saple to fine relative med ygen

as a relative tone or proportion

of course with the local  
function will reject itself.

Such a view of the part  
of the us - or cupping behind.

Asbestos - doubtful

Abominis - primum delinij -

about - sul. a. i. c. d. b. k.

eg. fumes of sul. a. i. c. d. b. k.  
it into the upper part of the

Curium also among

### Expt of Rye

Expta in ciabau expta =

the rye plant - Also in

palms - (Cyperus) in wheat

oat &c. - As bits from the

or a reticulated film over

plant sticks together to another

from film. Will thicken

of can put into water flows

gollajis globules segments -

In 22. 23. a property between

of a small purple fruit  
1/5 to 1/3" diam. in 8 or 10 days  
full size & covered with hair.

Experiment - one view that  
it grows in water - air or  
soil. But this not suff.

It may produce - & other  
cause - excitant & purgative.  
May injure as found <sup>or used</sup> in meat.  
Been prod<sup>d</sup> artif<sup>ly</sup> - a spore  
came out. 2<sup>d</sup> a germ  
depos<sup>d</sup> in wound & found  
moist atmosphere. Supposed  
to have been on food & found  
into circles of plant. But  
more likely applied directly.  
Mucillum -

Cheratia - spur eye - 1/2 of the  
2 in by & 2 or 3 lines in diam.

Quadr. shape - circular aper-  
longitudinal sulcus not  
very - If of front & then  
folds in water. Swells

*Diopha lutea*

like short fish. Outside  
purple color. Blom cream  
peach - fine ref. Cap. like end

A with 1/4 size of charge with  
destroys it - put camphor into  
bottle - also into by all.

Chem. abs. Valerian extract. This  
oil. med. virtues of eye - 205  
do in dose. (2) Opuntia.  
has no internal eff. only for  
solid. sol. in S. ether - other  
ingredients not imp.

Acteon. I say eff. blood  
& part - smell, heat throbbing  
supper blood found head strong.

Light to veins, part? part  
vertebr joining - species of muscle  
paralysis, coma.

Internally 5 - 10 per. no other  
eff. but in some case depress  
heat action. In females, faint  
in back etc. Delayed

newborn vomit headless  
slight dizziness of eye.  
373 - 6 vomit. 203 - 2m.  
vomit vomit & deep breath -  
Uterine action

in the uterus - as a specimen  
on cross film - energetic &  
call into force of the expulsive  
fibres - force out strongly in it.  
Not to prevent female  
only. When dead products  
after effort expelled - Action  
in uterine gestation. McLeod  
Chapelle says in no case.  
As to its origin of uterine  
action. One says protects gestation  
another that unless so strong  
disturbance will return effort.  
One looks around it as  
well. Stythes pain & rapid  
with or without force. & any  
state of rupture - Not supposed  
& some - impacts the uterus

of the uterus so that a slight contraction  
pulls down pulse. Enders  
weakness nausea.

Effusion child decided. Under  
bone in 2 hours after med.  
will be bone killed & absorbed  
& rapid-pulse in water. Even  
in less than 20 minutes. With  
all the indications of having been  
found of cyst.

Wednesday, March 15<sup>th</sup> / 76.

Erythema acts as a dependent  
upon mother - of infection  
less than 110 an hour becomes  
dangerous - but if uniform  
note then all will be well  
but if intermittent child will  
be born dead. Erythema destroys  
child in 2 ways 1<sup>st</sup> direct  
pressure & 2<sup>d</sup> by powerful  
compression of uterus. In it  
causes. The umbilical cord  
is pressed & so supply induced.  
From appearance of child can  
say whether killed by erythema  
or not. If so surface livid  
& purple, constrictive knot -  
short etc. If born alive still  
child born weak etc. Affected  
of nervous system - spasms  
or rigid limbs & convulsions  
usual - Erythema acts on



Placenta. expelle it - The state  
of contractility goes on till it gradually  
expells placenta & the child. Then  
firm. Organ remains firm  
round it. But duration over  
circulation cont. Central part  
of utero contracts - a kind of  
horn glass cont. Occasionally  
fails altogether. Reasons: fault  
of medicine. changed keeping - or  
may not be parents - But some  
if not good: - penetration of pt. =  
indigestion. Excess concentrated  
in the circle - not any fibres  
it is not expelled: - pain &  
distention & lastly given with  
stimulants - In some cases  
if eye of a doctor in fact  
it becomes dangerous. One kind  
of hospital pills (its results -  
Diseases = convulsions & jaundice.  
1<sup>st</sup> = Bottrami 2<sup>d</sup> = ergotism.

Lubus fornicatus yellow skin  
pt. low diff. wet excess -  
concoloris yellow - in 100  
more limbs or penul. latera.  
2<sup>d</sup> Spasms or tetanus etc  
in. One turnus gutta -  
Jaundice is singular due  
to enlarged eye. usually  
preceded with symptoms -  
fornication - loss of appetite  
limb & m. aff. hot & cold  
& turn. A fracture forms  
breaks & a spot reveals as  
if charred. Dry jaundice -  
Line of demarcation slow to  
form. Habit the interrupted  
a joint - a paries but fingers.  
In some cases further to top  
of thigh & both affl  
Then 2 ant to the incumbe  
Resais.

Eryt. a stiprio or anti-  
recept. eye. caused &  
recept. eye. caused &

Uses. For anorexia's use - of  
pain & loss of strength & become feeble  
& lose power - of so as to be  
a diuretic & if part be  
verts or break in reach.  
Of no need. or to act  
in vagina or deep pelvis, no  
head symptoms - may give  
it - If rip up, stop or  
should stop - use in  
not proper with head symptoms.  
May be administered under above  
precautions easily. - sent  
eye of liver - not so hard  
& pass perineum. In cases of  
placenterium etc. when  
placenta or part of amnion - to  
from head to flanks & sent head.  
As a hemorrhagic - as  
in blood urine & hemorrhoids, &c.  
For purpura of Dr. Legend.  
For bladder & uterus in  
incontinence of urine -

For irritation of pupil.  
For chronic discharges of the ear.  
as Leucorrhoea from the  
Dose 5 to 15 grs.

As infusion. macerate for  
2 hours, strain & give a  
wine flavored by 20 to 30  
units.

Fr. 50 grains of pot. alk  
dissolve in 7 1/2 oz.

### Alkaline Agents

Most of those of K<sub>2</sub>CO<sub>3</sub> already.

(1) Liquor potassae & Carbonate  
(1) Aqua potassae 100%

120 grains & 7 pint. water.

Mix & rest. To obtain good  
oil 10 units & let settle.

This forms deposit of solid  
substance. Nature of Chem. Agent  
exp. 1/2 of alk. is K<sub>2</sub>CO<sub>3</sub> filtrate  
of the decant. rest.

Chem. Chloride with aq.  
Sp. gr. = 1.048 - In Commerce.

A soapy feel between fingers & thumb.  
Common at glass in corroding it.  
found better. Taste uniform & agreeable  
taste - no odor. At temp of 1600  
crystallizes to plates & sides - in air.  
Mid. fine red ppt. with heat & dry  
or super of lead: no  
Decompose Ca mag & Ba salts.  
& metallic salts as Ca. Fe. S.  
Stains down on hydrog. oxides.  
With am<sup>l</sup> salts. Am<sup>l</sup> gas evolved.  
Taste along fine for K<sup>o</sup>.  
Active - Antacid remedy.  
Is absorbed by stomach. On kidney =  
an antilitic. Remedy soluble.  
Not from overrate. It is in  
large quantity - Is an antacid  
& an antiscrophulous remedy.  
Expts. perf<sup>d</sup> show it dissolves tubercles  
deposits <sup>in tubercles</sup>  $\frac{1}{2}$  only. In intestinal usage  
as an anodyne - less so set  
as op. but <sup>it is found</sup> more remarkable.  
as emol<sup>l</sup> no cath. eff. prompt.

As an expectorant. Pe skin to.

For dyspnoea with heart burn.  
Gum with orange peel &  
lime tart. Lemon water good.

Ain of beer neutralizes it.  
With acid of. Ain - good.

For curis urica, red sand &  
Spt. weak gum Columbus alk.

For strumous disease in  
eye does 152 doses with  
much ay - It is easy life.  
easy & pleasant of much -

For desic Sir Benj Burdies  
fruit remedy.

For lung disease as phlysis.  
copy, & for br. Some cases  
of phlysis did well. arrested  
in Cape does with bitter  
remedies & Carb. potash -

In curis with skin disease.  
For jaundis apte belts & lemon  
yellow for skin - Lu.  
blood counts for p d u.

Dose 10 an. to 1/2 doz. In both.

Carbonate of K<sub>2</sub>O

from pearl ash. Process is  
to separate the impurities. }  
Lime water. The impurities are  
after fused & cooled - 10g. K<sub>2</sub>O<sup>9</sup>/<sub>8</sub>Cl<sub>2</sub>  
Solid granular. new <sup>in</sup> crystals.

Small semi opaque. Deliquescent  
Chain or - Sol. in all the

alk. of water - Coctm alk contn -  
not sol. in alk. After 48h. fair.

more CO<sub>2</sub> & = K<sub>2</sub>O & CO<sub>2</sub> - hot  
after pure - aduclm = sulphur

chloride on Sol. in aq & M<sub>2</sub> - &  
test for oxyg. Phosphoric &

add HCl & the test for P<sub>2</sub> - in  
silica clear & colorless add

M<sub>2</sub> sig. milky mass & flocculi - 8g  
also K<sub>2</sub> but small for yet in

forming. Add up to end of L<sub>2</sub> & blue  
reformed. H<sub>2</sub> phosphate. } 8g. 7SO<sub>3</sub>  
also to test. Salt of Na<sub>2</sub>O. pure  
test with acetic acid & H<sub>2</sub>Cl added

Proph. & dyer & Nat. S. fund -  
K<sub>2</sub>CO<sub>3</sub> actis like K<sub>2</sub>O but more  
irritating in eye dose. is common  
& kills in 12 hours sometimes -

Acute poisoning by it not so  
common as the chronic ones.  
Chronic = destruction of mucous  
covering in lining membrane  
of Oesophagus or stomach  
when in use. never reproduced  
& do not easily form pus.

Prod. of acid in a few  
days. Acid pines to content  
form -

Use in dyspepsia &c -  
(K<sub>2</sub>CO<sub>3</sub> more common) -  
Dose 5 to 10 grs -

L. potato colts  
20 of Carbon & 1 pint of  
distilled water. 5 to 20 m. in  
water -



Bicarbonates of KO

From carb of  $CO_2$  gas thro' it.

Concentrate & heat not over

160°

Differs from foreign in being  
Crystalline in rhombic prisms &  
not deliquescent. Mild taste.  
sol. in 1 vol in 4 of aq. and 2  
of ~~water~~ in its wt. of brkly aq.  
Effusion of acids - Auto decomposes  
 $CO_2$  -

Tests (Chem.) 1st. <sup>2d</sup> ~~at~~ ~~heat~~ ~~of~~ ~~100°~~ ~~eff.~~  
1st wt. ppt. <sup>with carb. bit.</sup> no change with  $KCl$   
unless added to it - 2<sup>d</sup> with  
carb bit. and  $HCl$  but no change  
in sol<sup>n</sup> of bicarb.  $K_2CO_3$  is  
an impur impur to the ~~rest~~ of them.

Adulterations - Carb. Sulphate & Carb.  
used for certain ~~apts.~~ mixed. In  
life does not ~~decompose~~.

L. prob. effusion. 1st.  $KCl$  in 1  
part distilled water & ~~other~~ of  $CO_2$  ~~tests~~  
helpful in certain ~~apts.~~ <sup>cases</sup> of ~~emetic~~ ~~apts.~~

Calc. Soda

Lead for Sulphate?  $\frac{1}{2}$  lb  
mg now not Bailla  
slant.

100 parts Sulph. & 110 part  
of Chalk & 50 parts coal.

Heats in furnace & turned  
over. Distillation over &  
up cold under 55 p.e.

Carbon Soda - next step =  
Lixivite - & grey coal =

at soda balls - next  
run with sand dust &  
up to 700° in furnace -

Soda now carbonated.

In 1849 chloride process 1 part  
in 2 1/2 at 20 lb in temp.

will obtain -  $\frac{1}{2}$  lb per lb.

red & c & for S. opt?

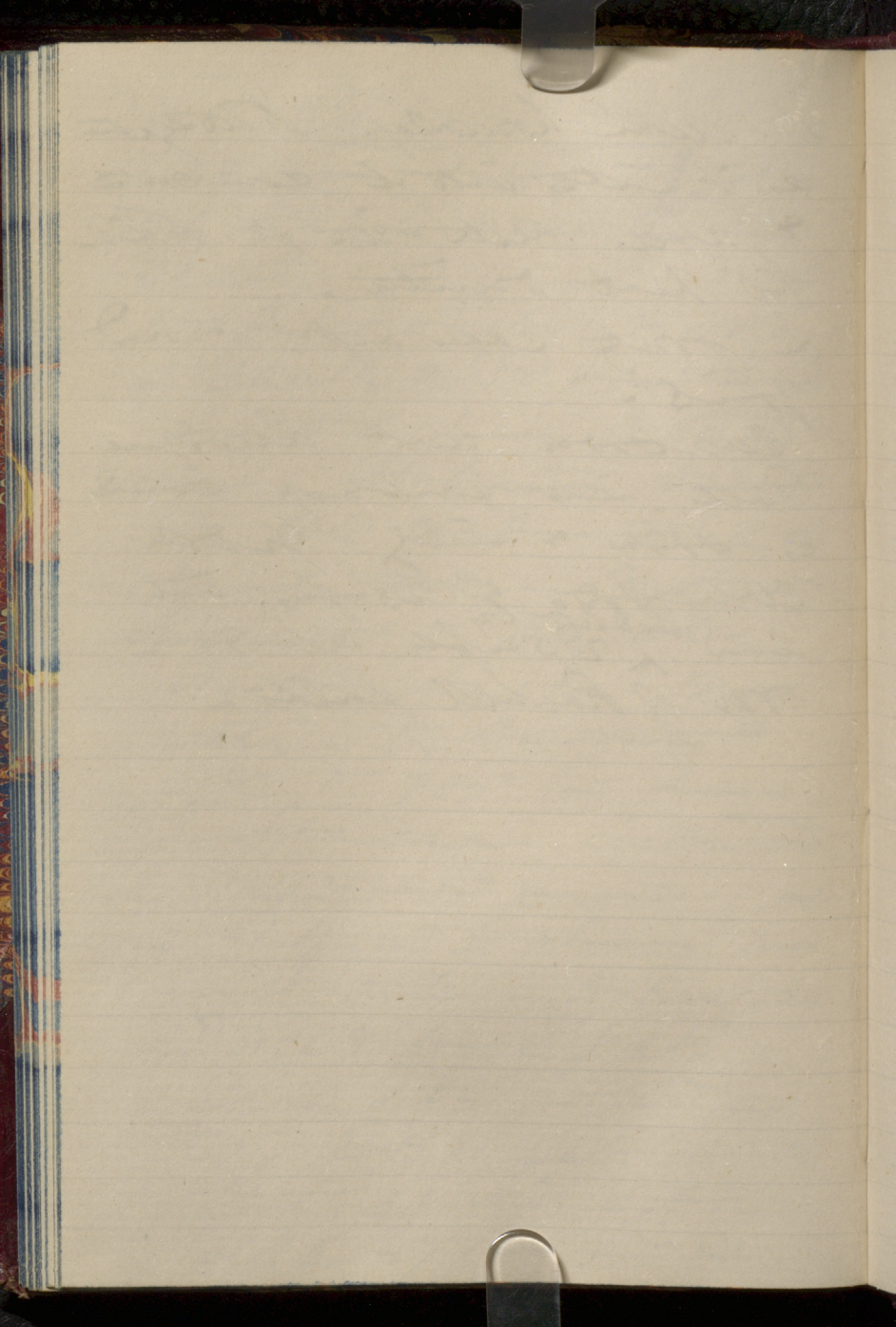
Same acts - run as

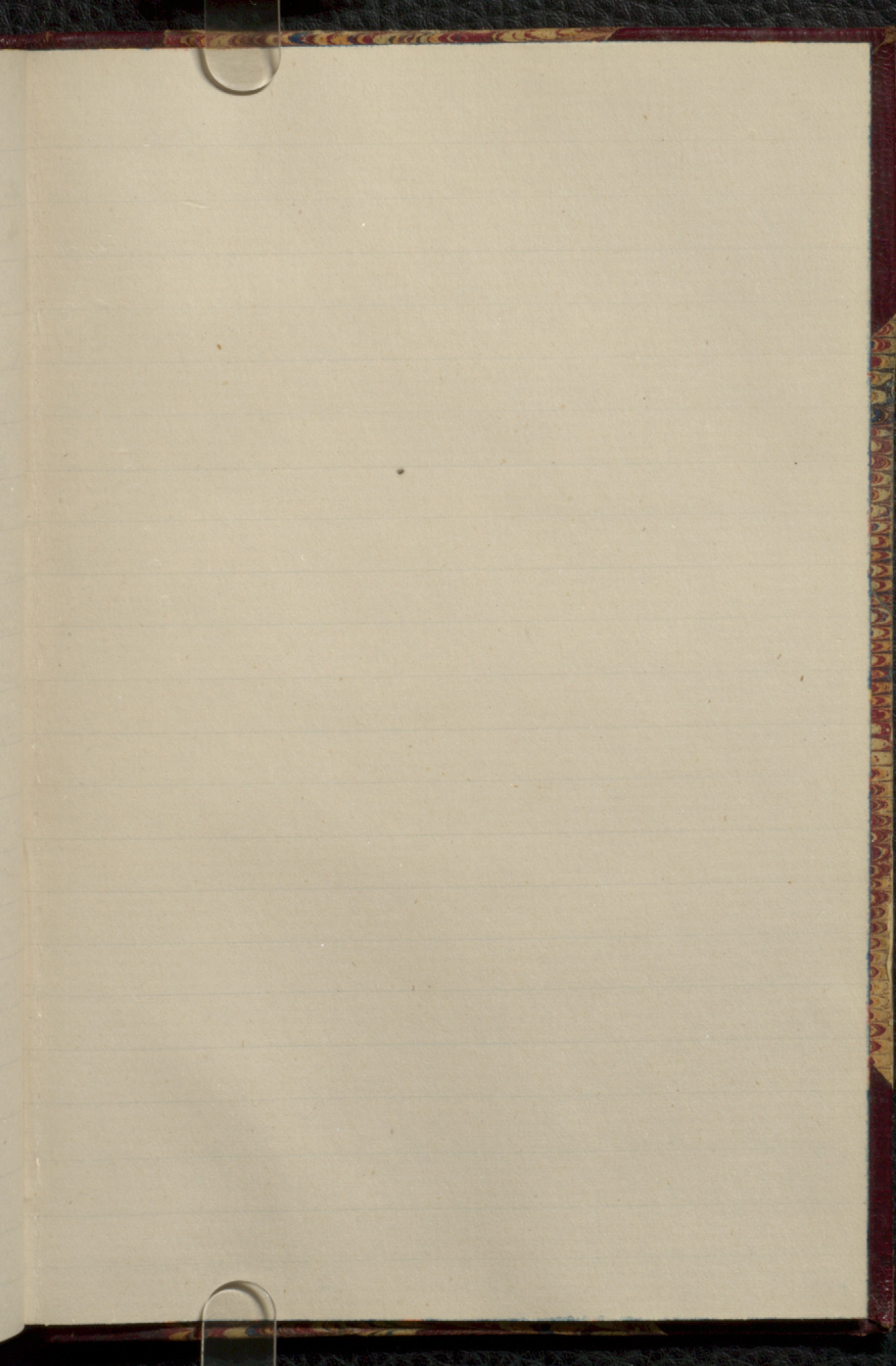
Ko. Diff = Calc is in  
Hunt. 3, with acid  
colld 47 1/2 Ko &

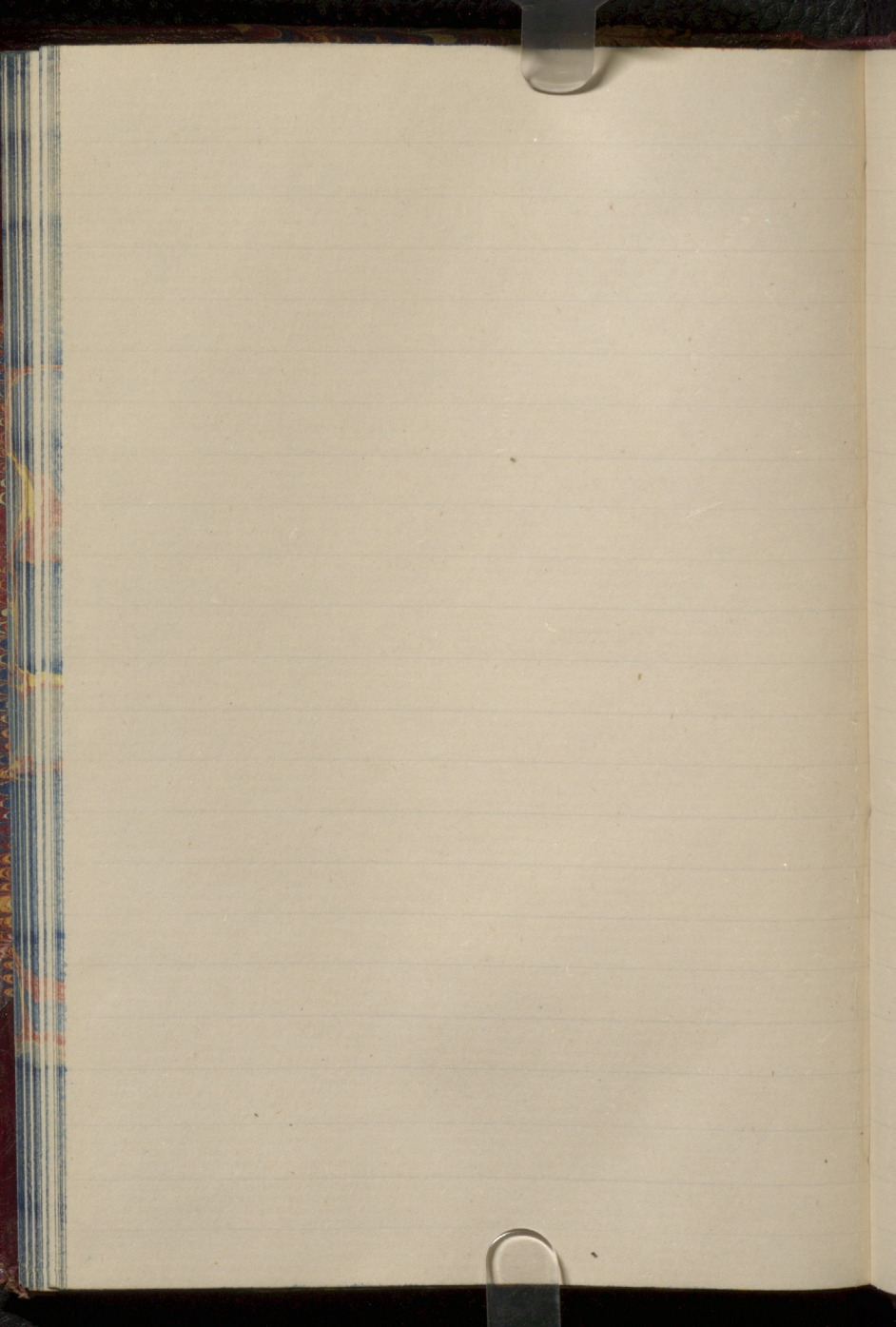
is some knowledge & thought  
as it enters into its contents  
& agrees with the st. of the  
the best result.

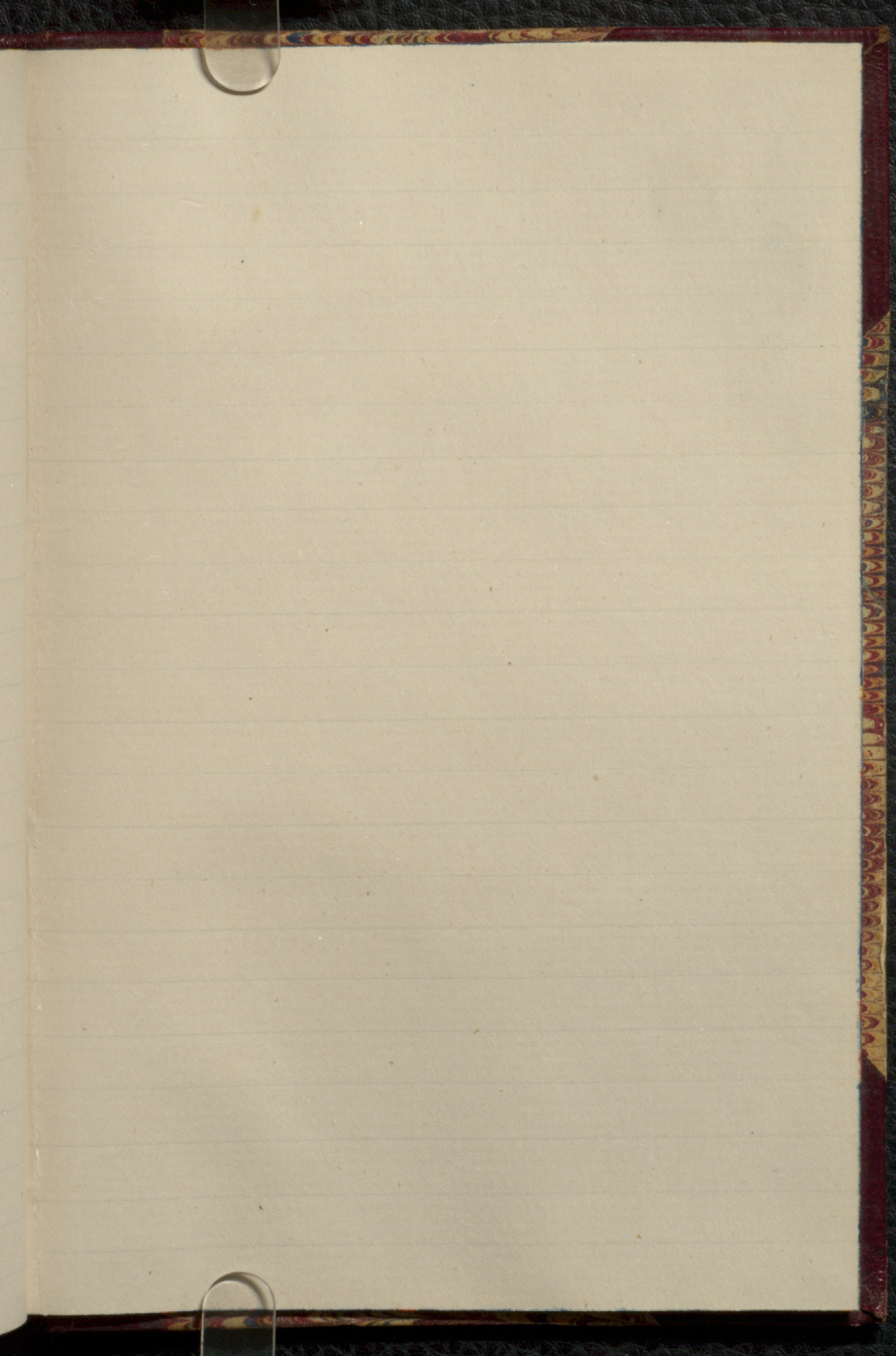
the first can be kept and  
used.

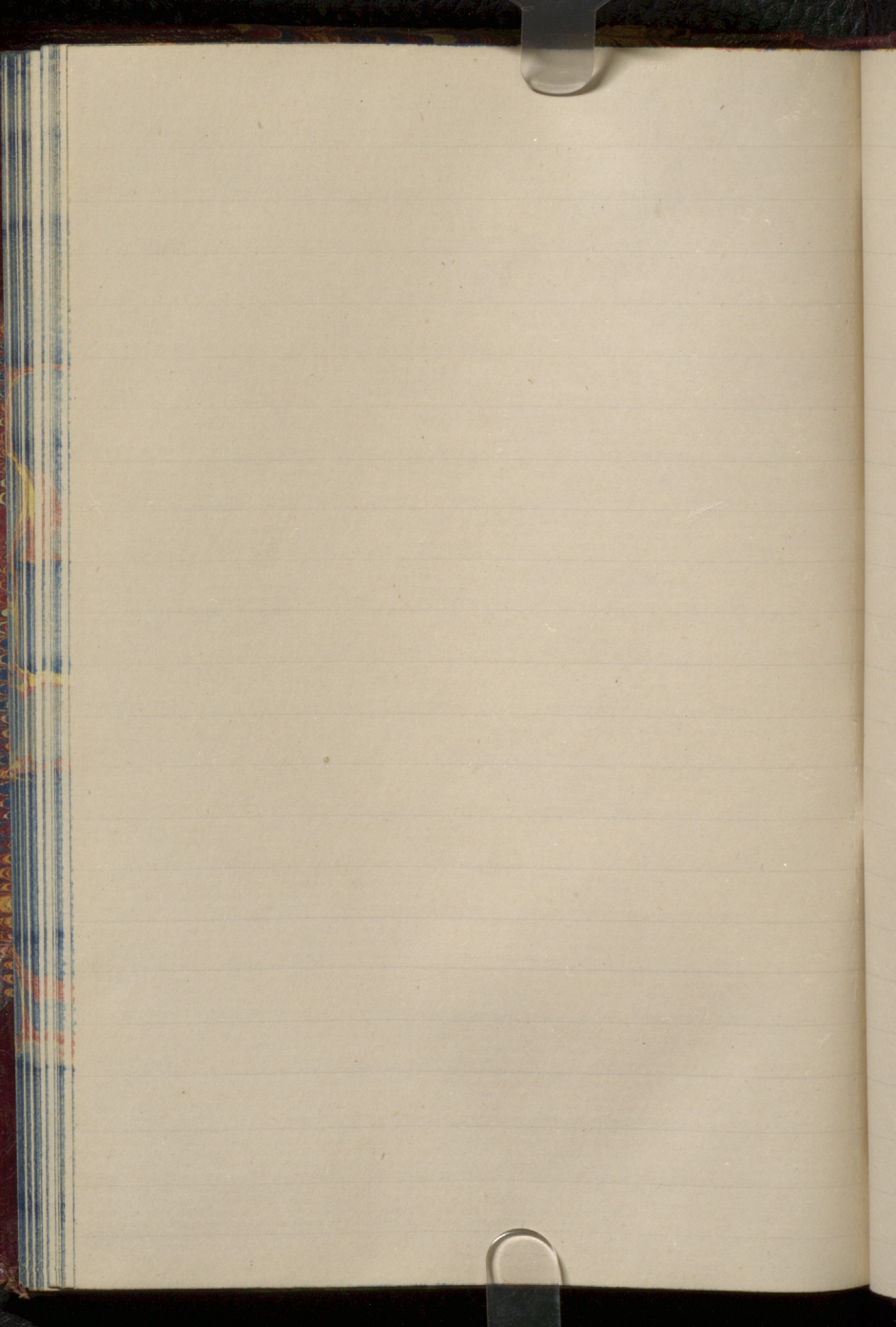
Carbonate not a good  
entry into compound found  
as soda & Sulf. Soda  
Carbonate of 25 lbs. total.  
and <sup>Sulfate</sup> 25 lbs. alk & 2  
lbs of Rochell salt.



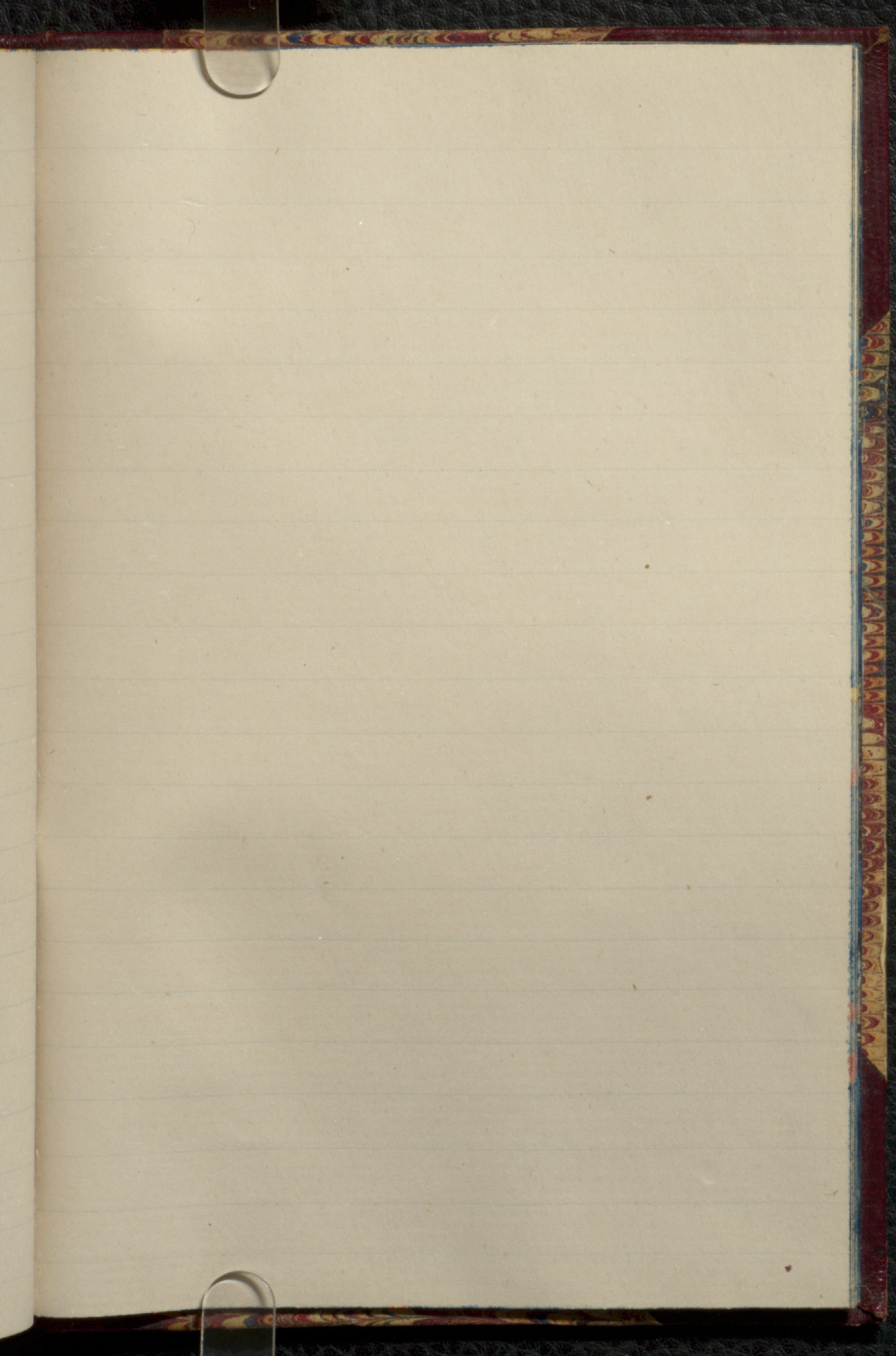


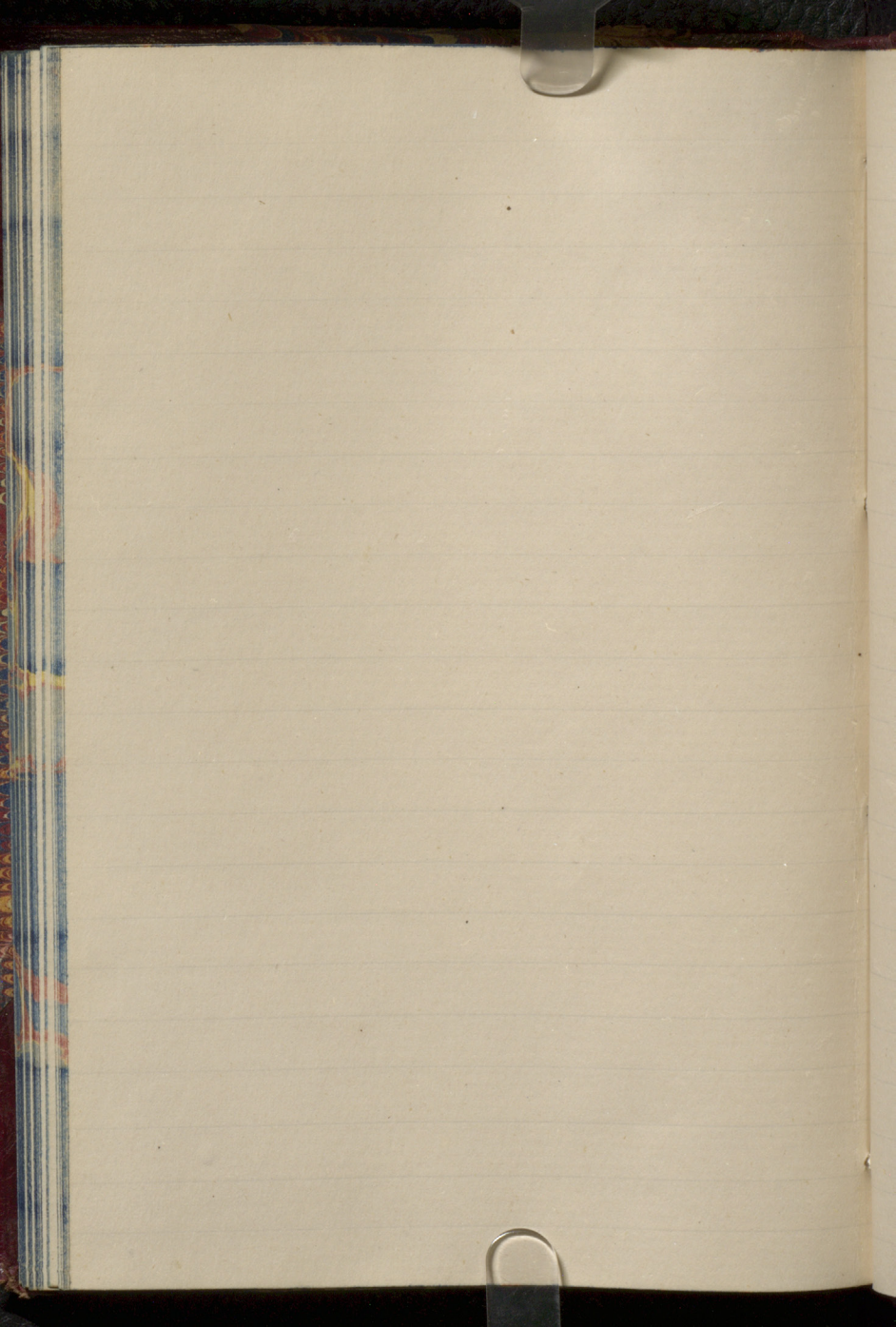


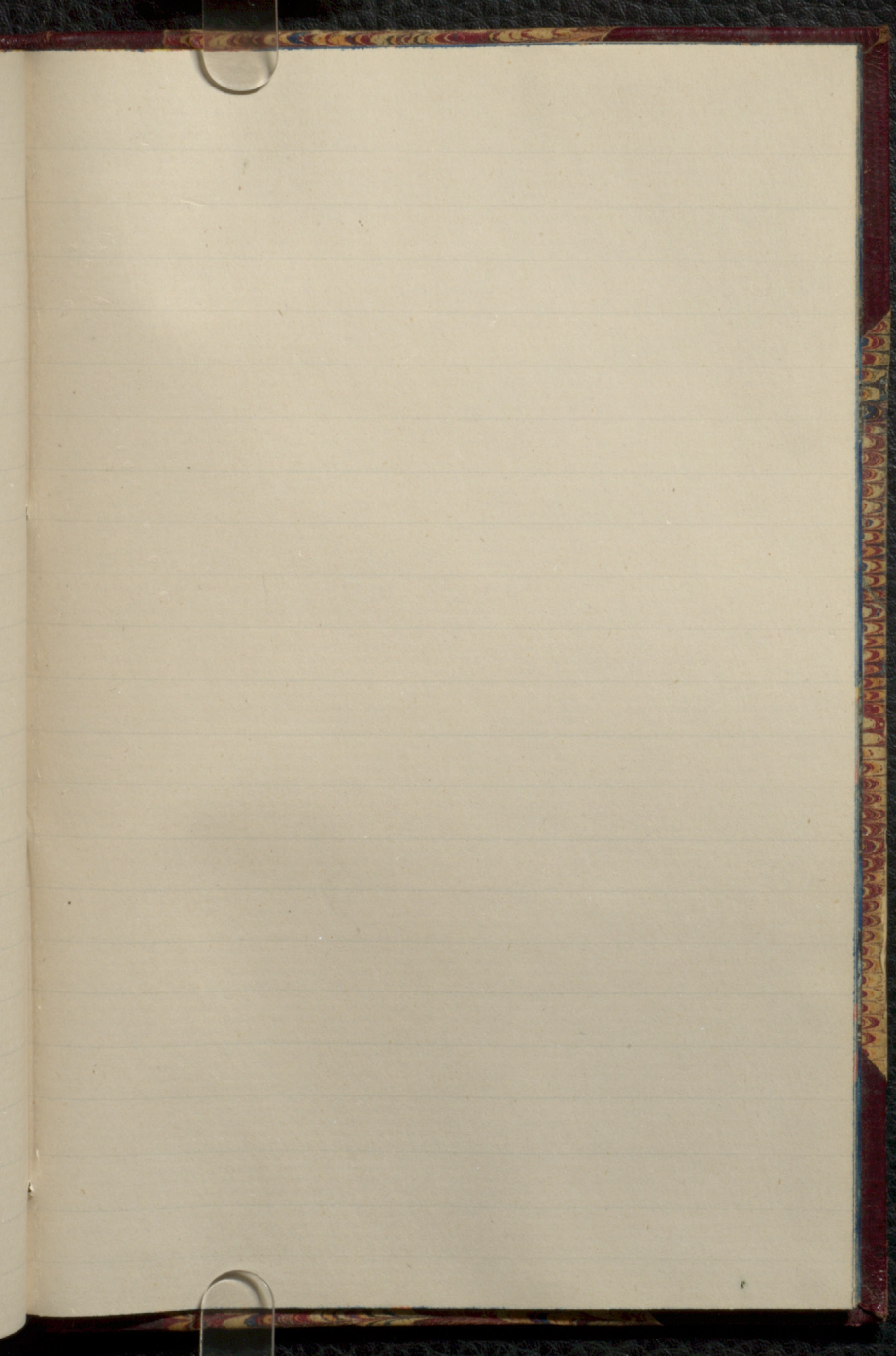


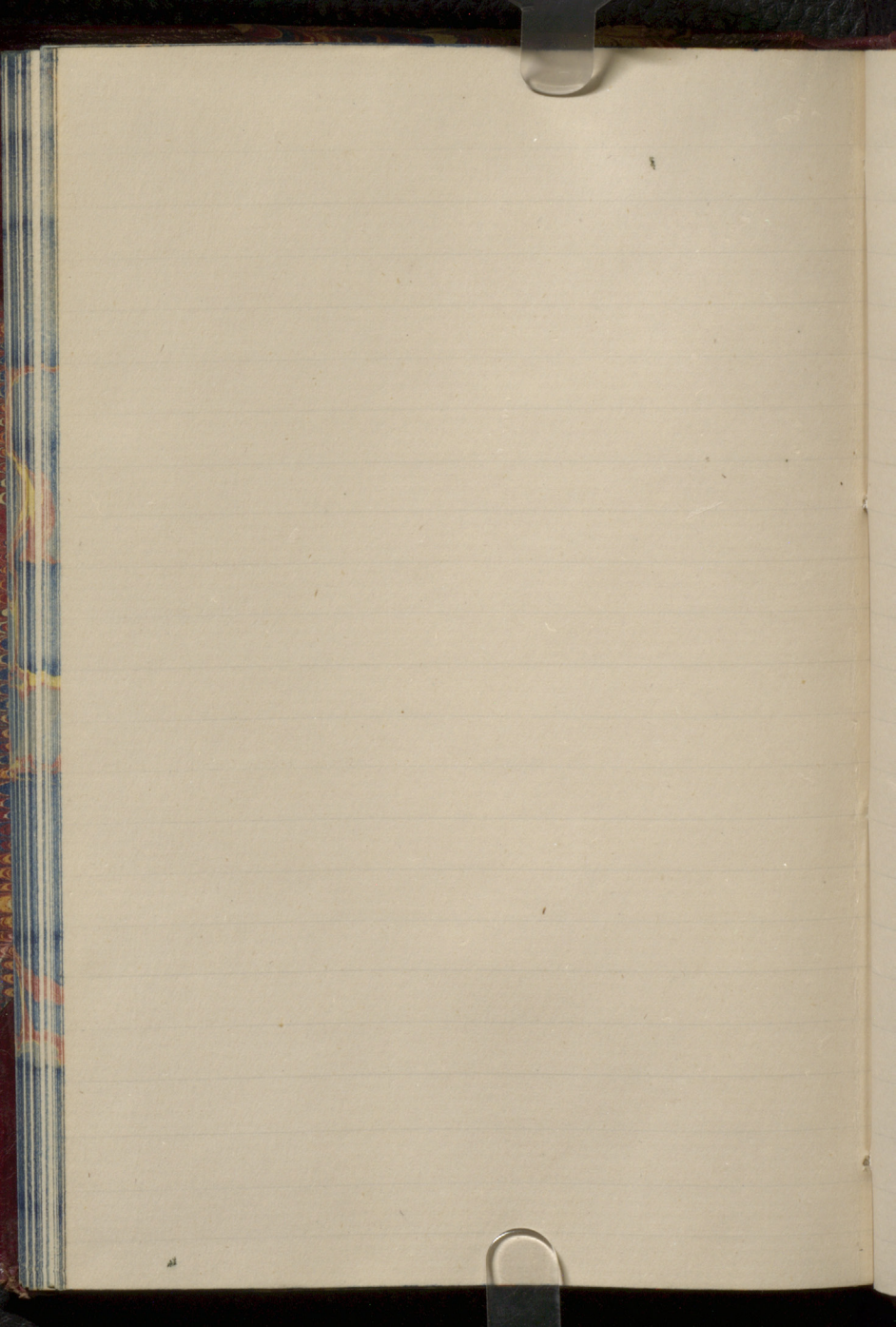


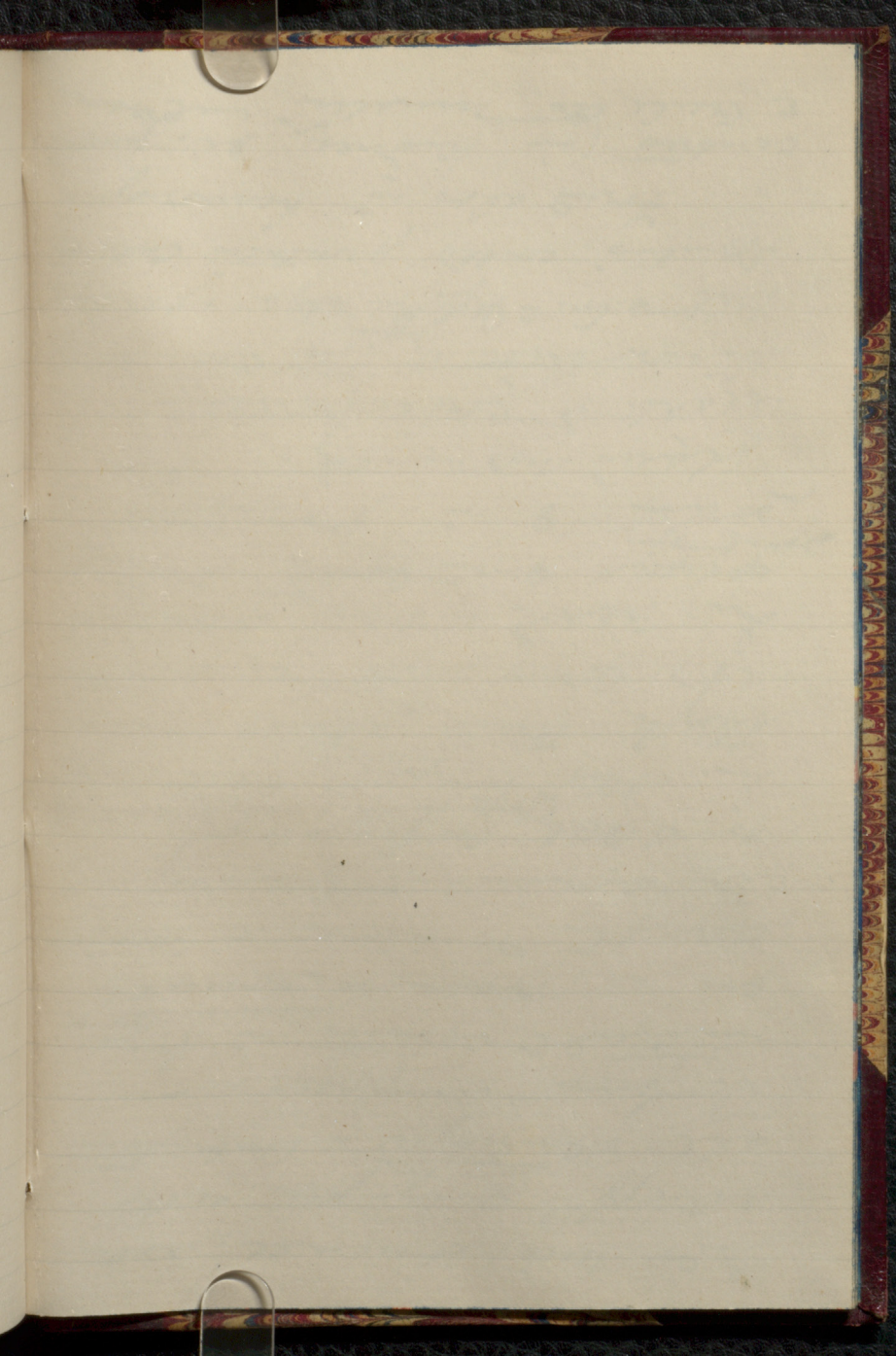


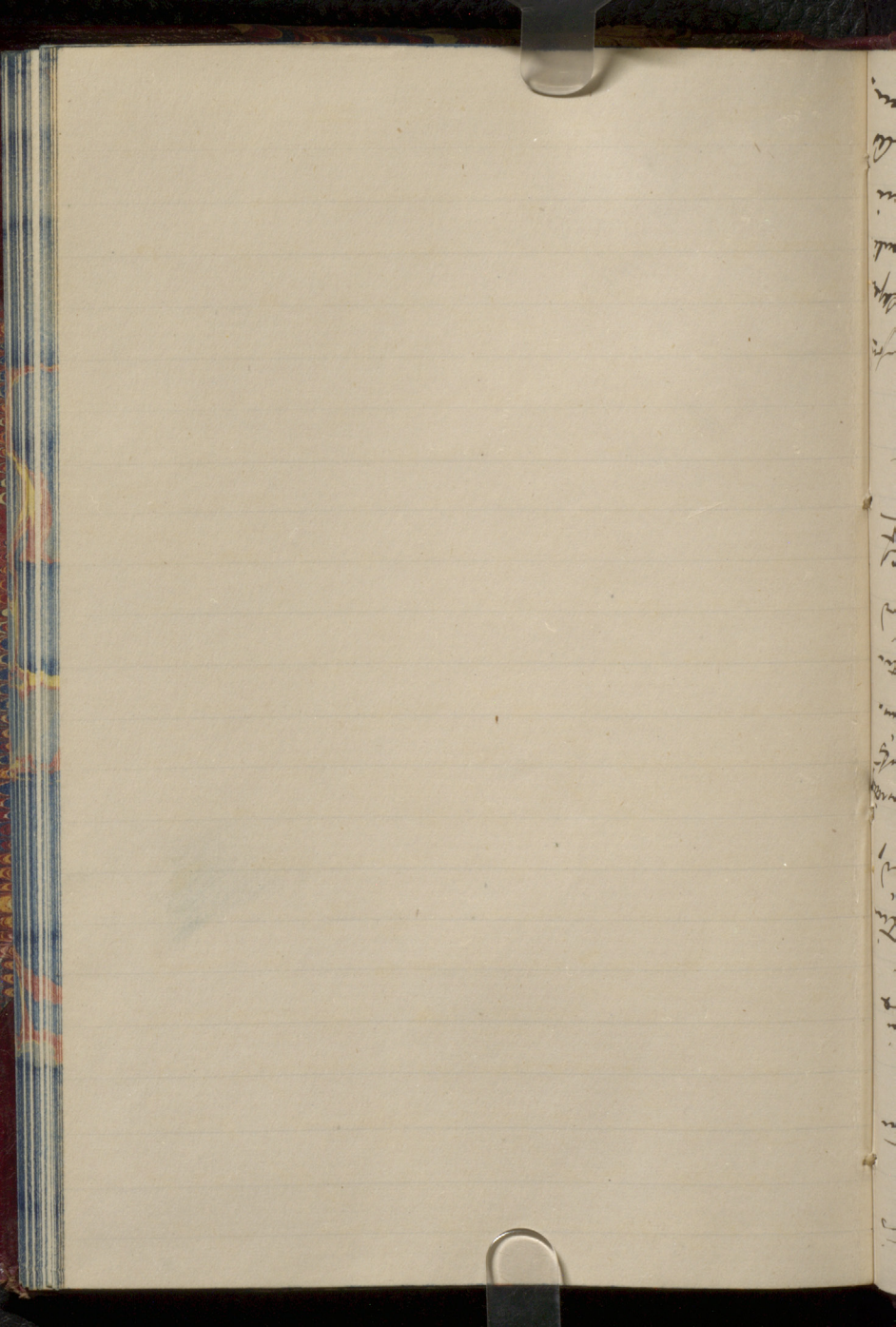




















Wed. March 15 - 76

factory can't  
the point after 9 am all  
4 samples of 200  
specimens each - amount  
from 2 or 3 specimens -  
degree placing as by  
method in following -

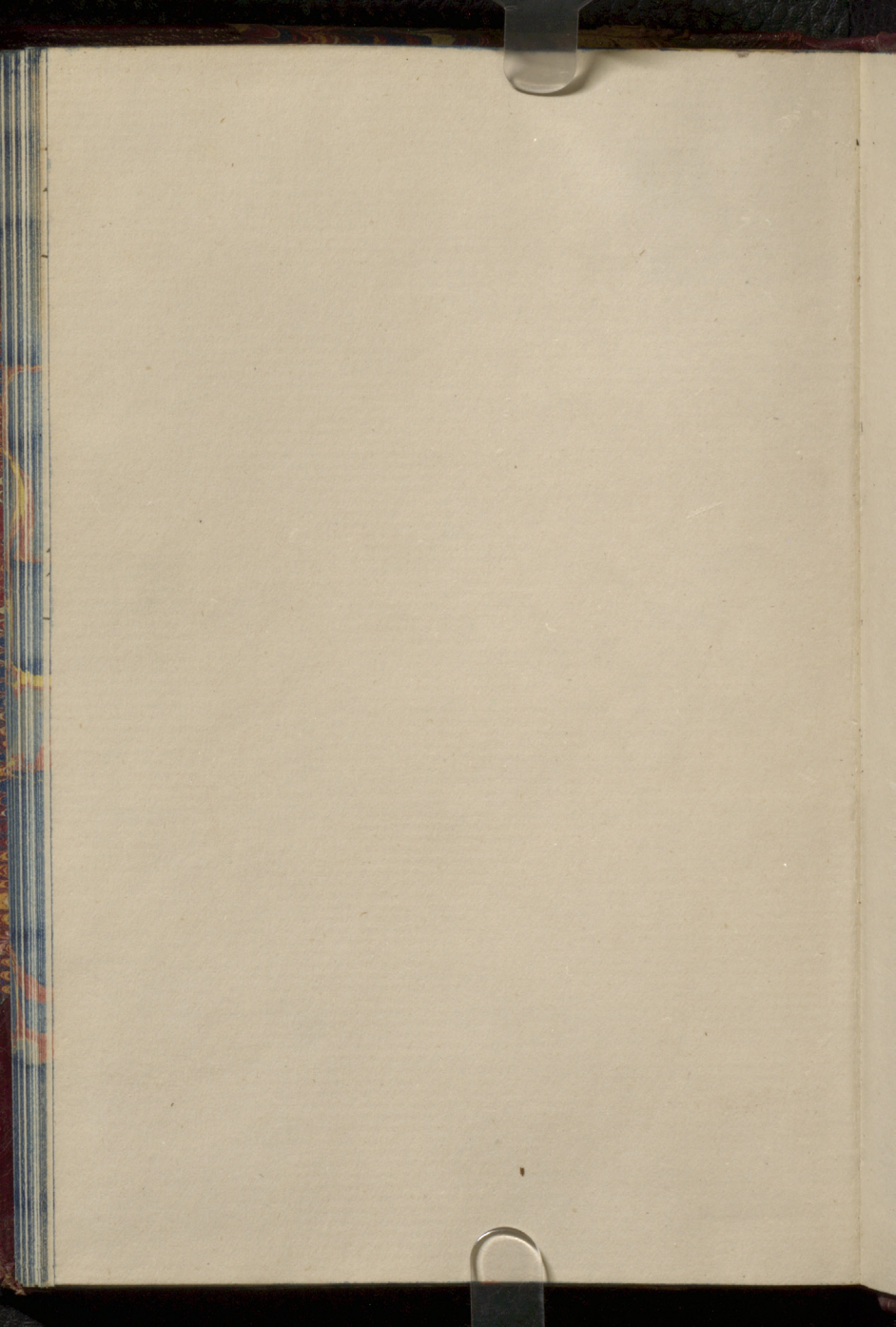
comes - may be a  
after but not a  
cause of them or in the  
substance - as this in the  
it is an inflection must

single change. & determine  
them = the average must =  
fine opening of net. each.  
This too is causing to  
for certain in the  
= "deformation of structure" -  
making edge in the net not

yet proved that deformation in  
is correct. from a way but  
edge - open. found of large.

Erkano

Amstard



Acc. 612  
v. 26

