



Lxx Dyz
409

Clinic Surgery -

Dr. Raddick -

v. 23

Acc. 612

J. H. Bell

No 1 Belmont Street

Montreal

Skin diseases.
Cancer - results of -

Clinic Surgery -

Dr. Roddick -

1877-78 -

Wednesday Nov. 4th 1877-

Diseases of the Spine.

2 deformities = (1) lateral Curvature

(1) is due to muscular contracture - (injury & ligamentous contracture) - is common in school girls esp. due to position kept at desk.

(2) is today's subject. or Potts curvature or Potts Disease of spine. Is due to caries of vertebrae.

Is followed by this invariably (Sept.)

Is also most common in children. but in all ages.

Scrophulous or tubercular taint.

Yet not necessarily so.

Many live to a good old age who have been seized with this variety of tuberculae, and have done so.

Causes

Chiefly blows - direct or indirect.

as jumping & not landing knees & so causes slight up inflammation & taint.

occasionally in the elastic
substance (in addition nature
for "buffers")

After a days walking or compared
that at night it will shorten
than in morning.

May occur at any part of
column & symptoms depend
on part involved. In the
intervertebral substance - pt's head
found much of neck rigid &
head whole body to nod.

symptoms - fully in days
& hours - crisp breathing in
sleep.

Of lower down, palpation of
heart, cough hacking.

In lower spine, symptoms
in rectum & bladder, incontinence
of urine - also constipation.

Symptoms from compression
of the nerves passing out -
How to examine patient.

If it be a child. Exam. joint
w/ pt. lies or stands. try all
over till one point shows pain.
Press ~~the~~ spinous process between
finger & thumb.

Long pt. across knees for a
spanky & make extension.
Then admin. a dryng. shows
no doubt. In recent case
can reduce it considerably. yet
not much free as my back
I believe &c.

Sometimes it begins at sides of
loaves - find it by drawing ribs
against bodies of vertebrae.
I had to find out, with ice or
hot water pt. will wince
when a spot reached. By passing
in direction to open the curve will
release pain.

After months pass forward & appears
again. In cervical region
above to Thymus, & front, or
retro. Thymus above.

Pass from back of chest &
pul² felt. Best. & in
some cases pt. (click) -

Sometimes to side of chest
thru - muscle - muscle -
Lower down ~~from~~ from
down ~~muscle~~ & sides
of diaphragm & from coming
from muscle & appear
near breast muscle &
known as from above.

Sometimes from found
into pleural or ^{from} above
in lung, or low down
into pericardial cavity, or
into intestine & so
from described this rather
a rare into bladder.

Or back wind, & appear
this muscle of back - Chest
above - If into pleural
cavity - pleural above.
Sometimes no from appears

being sent up, & dissection arrests
& put about or into changed
substance. May mention info. ^{female} ~~anemia~~
no ^{breast} ~~breast~~ ^{back} ~~breast~~ symptoms in ^{anemia} ~~anemia~~.

Radical Hernia may
be reduced. Also comp^d with
Hip joint - drains - same place
as persons above. Symptoms of
Hip joint disies. Pat or retro-
pneural above.

Treated

of incision at one - fresh
syringe tube } finger & structure.

Has been opened & behind
the sternal - marked muscle - pt
can't breathe at time. Treated in
antiseptically - pt well in 5 weeks.

Persons above

Treated.

carefully & best antiseptically
Zoster plain. Incision -
press drainage tube up to & pass
Purpate hgt. make another in
line - close first - & treat from
above. Empty it & inj^d 3/4 cl.

or open when it is put
cap to the eye - keep it
swart or blood pouring.

Treatment of Ptd. can.

Essentially one part - eye
indication - Put pt. of red eye
on hand - sutures & make
line tie & rest - the bones
in children support the
parts as a leather or gutta
flesh open - or stays.

Give cod oil - eye of
iron - charge air & dust well.

Dr. Sargent's - plaster of
Paris bandage.

(See Tripod)

supported & curved steel

steel
understand



steel bar

head/pt.
bar

Wed. Nov. 14th - 1874

Feet

Instruments

gr. cups

Lo. ferr. sol. 33

" Cantuado 23

Syrup 1 gr

add Quini. per. ana 1 gr.

Wed. bougies. sit. nit. away.

19 dr. to 6 lead. or 10 gr.

Calomel 57 gr. glycer.

Nit. silic. 10 gr. to 3 lead to

silver bougie. woz 2 1/2 woz.

This diet is written & used
small meals.

Gonorrhoea in female

attacks from part of vagina.

not (or rarely) urethra. &

don't give intent remedy to

act thro' urine.

Syl. nit.

13 grains 873 in 1 pint of.

all 3 or 4 times a day.

Passion or suppuration
of ^{ovary} ~~ovary~~ with tumour.
or scab with tumour
of ~~ovary~~ -

Code in small

Hot water copious
Chaper to - give
dov at night - Sleep copious
in hot water at night.
or ice when even out

Complications =

- (1) Orchitis. & (2) Prost
(1) 2 after of trig of testate
Epididymis also involved
usually - Pure also purely
induced by cold - also
then ^{or parasitic} ~~usually~~ by a change
of care, both of same side.
Gonorrhoe seldom simple
The epid. is now chiefly
involved = Epididymitis
Due to ~~infection~~ of gonorrhoe
trials very low degree

Apidrosis, is,

Symptoms are identical
with those of orchitis.

Dropsy pain - relief of raising
testis - pain in flexion &
down tyles. Discharge ceases.
but the prostatic return soon
fully gone down. Skin of
scrotum red & veins enlarged.
Testis flattened & hard
nodules = epididymis. Do
soon as to effuse & produce
hydrocele.

Treatment

1st Place pt. at rest. Puncture
a vessel ⁽⁶⁾/₂ of the large veins,
& foment with hot aq. or pt.
sit in hot water. When pt.
tired of kufe ~~use~~ use leeches
now ice above & below testis
for sometime. Cover with flannel
or fill 2 pip' bladder with ice.
If too late for ice - say 45
5 or 6 days use Antimony & Opium
& anodyne fluid 1/2 gr. per day

9 apple, table $\frac{1}{2}$ hat.

For hydrocele use trochan on
A. Mas. eye. "S. Mas. with
hyg. ointment. If necessary, stop
treat with plants & use pincers
in doing so.

Has depress among remains full
for months or for life &
sterility results.

Obviation of testis may follow
treat of proctitis & incise
early. Any Switzer treat
of retention of puncture with
narrow knife. Swant in at
2 or 3 points. Explainⁿ is that
of puncturing you relieve tension
but may not shorten men.

Rubo =

Swelling with suppⁿ of glands
in groin (or neck for S. F.)
(1) tubercular (2) viral.
(3) Syphilitic.

(1) may be induced by any

ir-came as erysipelas
comes in foot. This one is.

Common also

(2) of - Chancroid in soft
Chancroid - due to lymphatics coming
from gland which is up
inflamed & suppurative.

Pus of ^{the} chancroid is id. with that
of the chancroid.

(3) Syphilitic same as syphi.

Treatment

to keep eye & in approx.
or to keep lead & open in
hot position. Keep open

(if used) & fowling in.

Plant of belladonna on
latter side, & press. will
stay. If to open open ear &
fill with wool with oil
put.

Wed. Nov. 21st - 43

Chaenoid = soft ch. non-inf.
ch. also soft ch. -

My own simple ulc
at fruit with no roots. 5-6
to 8 days after anax^{is} + sign
at once to soft. After a
fructed return. have a
2^d form - with a soft.

ulc. - soft aff. -
alobous - aff. as well.

3^d var = fragradum
chaenoid. in the most
series of to 3. but has
no small. soft. follow.

So ch. is a local disease
as a rule on plants but
may appear on any part of
org. - On males it is
chiefly in narrow helix pens
at side of freum. Next

most faint site is in flower,
then the nucleus & then
the skin of presence.
fully more than one - Rare
in skin of body of penis.

Seldom on scrotum. In
small seldom on anus often
in female - reason ^{plus penis} & si-
In female site - sometimes
wha sign. to do & exp.

The pus to the head the
Se. the dis. is prophylla.

One of its (pus) distinctions =
form of alto-inoculation.
i.e. if later alittle bit - ^{of sample}
vacuoli (or to open) the body
in my part get a sore same
as penis. If inoculate with
pt. retro-inoculation.

So some wild antigens with
have it - is a local disease &
requires no ^{antib} treatment.
Not so with small pox.

If from a chance - cannot do this
with as - a small fish.

Chained has no signs
of incubation, i.e. no definite
ventral - white is marked
sign that it is not incubated

Of abnormal visit (by a
bird) eff. is instantaneous - of
bird cannot work the spiller
with legs.

Chained common as a
phenomenon, seldom seen as
it subsides off.

It extends rapidly to the an-
terior, settle or up again.
I not recall time of
on mode of travelling health
in But at least regularly
ally in 4 weeks. know
kind of more healthy pass
a life more slowed...
During all its time its
pass is also involuntary.

Dysuria = only irritable
but is alto. involute - so
may satisfy pt. of this.
Of you do this daily new come
at once.

Herpes is always found on prepuce
& glans. - little white vesicles
when first observed of my people

Herpes is common to many.
Simple and ^{white} will heal in a
few days, but elms. do
not elms.

Then patches or cord-like
of the urethra for chancres.
elevated and depressed.

With this is ~~sc~~ a kind of
cont. Syphilis.

Balanitis = a simple
atrophy of skin of prepuce. No
pouch set off - ^{Jejunities} ~~Chancres~~
is the part cure. Due to
Sphingia Impure allowed to
decompose prepuce it.

Differ. in inflex

2 non. inflex =

(1) Chauvin = always loud.

(2) Chauve = in constance.

(1) for pass & wry else
of charm or cl. thro.

has no period of incubation
may sudden & sudden in
a few hours, always less
than a week.

(2) has short period of
incubation 2 or 3 weeks
never under 10 & seldom
over 24 days.

(1) usually multiple.

2 habitually solitary but sometimes

1 by 1 is a favorite.

2 " " " " papula.

1 by 1 is a

2 seldom by ulcers

but less commonly

by 1 & 2 is not a serious

prolonged duration

(1) Chond has a worm eaten
appearance

2 hook sloping edges & adhesion
at edges.

1 Secretion is ferment

2 " " " " virus or sanguine

1 no indⁿ of rudimentary base
to speak of -

2 Dist. cartilage circled
rudimentary.

1 peduncle in flav^r of fatty
gland ventr^y (as a rule) in

upper.

2 sup^r indⁿ of glands.

1 may appear as indⁿ left;
this.

2 pl^y rule (as a rule)

1 may be transmitted to
lower animals -

2 peculiar to human race

1 not brought by of.

2 is said by "

I saw from 1 ^{placed} under microscope
 with a drop of Na_2S - well
 found two found. ~~sub~~
 in 12/10 of ~~sub~~ of
 epithelium of ~~sub~~ of lymph
~~sub~~ or very ~~sub~~
 of soft ~~sub~~ of 1
 on ~~sub~~. a ~~sub~~
 have it also ~~sub~~ a
 kind ~~sub~~ not
~~sub~~

Treatment

Pt. must if possible
 rest. non-stimulating
 diet & no nitro. tinges.
 7mg eyes cut out.
 1 but avoid sutures on
 chondral side.

Stay cautious but

of acid ~~sub~~ ^{of pH}
 of early ~~sub~~ will
 { prevent but soil is killed
 & ~~sub~~

Na_2S but. also acid ~~sub~~

Zn Cl. ap. Na₂ (S₂O₃ as
part. with neg. char.) =
color explosion part. of Rivin

(good)

Acid early good.

App. to Na₂ S₂O₃ a
strip lign. matter as a
with + parts. or with
Cotton wool out.

apt. ~~with~~ ^{hot-} water & some.

Wash tied cotton with
if inflexible soon.

mat. subst. with carbon
to be, next for a week
black water, next red.
wash as it is being up.

1/23 of Na₂ S₂O₃ ap. good.

Remorse seems some
the little art of plume.

Acid. or a liquid.

Of see / it about to be dried
with 90 it goes as paper.

of water apt to result.

✕ Jayit mundis below fork
(3-1) Pharyngeal chord "some
peculiar - it is a vent
rain coming with chord
the part assumes a kind
red & grey appearance of
Serratus hence follicles
• apply iron. Forming
• penis, scrotum, perineum
& in a woman vagina &
rectum, its use. Pl
Quarts & dentals.

Treatment

Rest, nursing diet
wine, bread & opium
for the ulcers & nerves.

Loosely - actual
cauterizing, but keep on
cords. sulphur paste
Zn Cl. NO₃ - daily at
sloping part part.
Bella-donna too much then
to with.

Wp fruit with strips of
lint in ice.

rich poultice - with
saturated lotus. Red, was
been done 2 & in -
Potassio - cont. of iron
20 gr. dose & every 10 gr. $\frac{2}{3}$.

Syphilis with

Thursday Nov. 28th 97

Syphilis

May be cont. of other things
than of course.

Prof. exam. as done of Boston
or of things which would
be used for the other aspects of
mouth - also of base, ajm -
leaves - flowers, leaves

Not sure if ^{syphilis} cured.

Simply cured for now -
daily cathartics if indicated.

Wardensome of weekly
doses with syphilis.

Chacren - young son of *Asper*
Incubated for 2 to 3 weeks.

Alacran has the
loof-hole - heads 15 or 20
days but at least 10 of
them on 24 days a
sore appears on same
spot.

Sore 23 wks.

- (1) elevated & squamous papule
- (2) as a superficial ulcer.
- (3) as an indurated umbilicated
sore with hard base
& elevated edge - (young)

Anterior Chacren

- (1) appears on vent of contour
as a papule size of
pencil head. This
expands & deepens edge 5 to 4
fine or 5 or 20-4.
It dries - no scars & finally
on stage of penis.
Pencil to 5 or 6 mm.

(2) = *Sophora ulmifolia* *legum* in *sum*
way. Put in cage but
reluctant a little for.

fully beneath for skin &
imitation for chamber.

8) *Sage* *vigna* had
been *defec* - no *su* of
pus but *disgru*
of epithelium *debris*.

Any part but *more*
between *flans* & *perfor*.

Draw any of these *plaud* in
gum *chylid* - *like* *allward*.

Treatment.

No *best* *treatm* of *urine*.

Be *a* *small* *disease* *all* *unif*
Don & *caustic* *op* *it*.

one of *doubt* *cauterize* (as in 23)
Drill with *iod* *form* or *calomel*
& apply "*black* *wash*".

Intally *treat* *pt.* *to* *wound* *of*
2 *in* *symptoms* *of* *kg*.

Give *even* *in* *pru* *the* *5* *fr*.
Don *of* *my* *pad* *8* *id* *7*.

After pill 5-gr. does also.
Not to salivation.

the 1/4 pr. sp. & ends 5 pr. of
of anemic pt. pill
cut & use 1/23 to eye 5 pr
of jaw & dr. ⁵⁶
at end of 4 weeks (was
less at 3 weeks or eyes
than 2 mos) expect
Secondary Syphilis
Syphilis being divided into
primary & tertiary.

In 2nd stage skin &
in in chiefly involved &
loss severe desin of
eye - taste & glands.

In 3rd more sup usen &
sens less of bones cartilg
muscles & int. organs,
eye & have the tumors
& granular.

2nd Syphilis.

In 4th 56 weeks p.d. complete
of malaise, scindell

Pairs of bones at right.
long bones & sternum.

Costa type, femur,
radius & ulna. Unalut &
allied & Muscians.

Apt 4 & 6 days pt. will
show a rack all over
body - like muscles. but
is? when effering redish br.

Diosporus on trunk just
back. In throat also:
Sphyrapicus roseus - first
seen living in England.

Following to other than
specimens - as follows:

- 1 Asorasia, 2 reana, 3 stittigum X
- 4 rupia.

(1) at 4 to 6 weeks. = darkly erupive
- spots size of open pea. like
little drops of mercury. on
extremities & trunk. palms of
hands & feet - & legs near an
inches or elbows when simple
porrius in form.

Scales small & hemata
in a cory base.

(2) = a pustular disease
with subneon follicles. All
on body & on scaps.

Not much on face (as the
only var.)

(3.) = also a pust. disease
but here pustules are large
i.e. size of a split pea or
all over body & burst after
a few days & a flat scab
forms.

X(4.) *Sym. rupia* = a brittle
mass i.e. beads first
pull up, & then bleed
and black crust &
scabs form so that
like a zoster shell

Syphilis crupens follows.

1. Have a white gray patch
2. Erupts like a cory here.

It is found in certain parts of
as prout on palm, re-
Is polymorphous, i.e.
diff. kind on same pt.

The ulcers of syphi-
lip & treblison.

In syph. sore throat =
inter. but, redness or haem
a no. of ulcers, from size
of pins head to 5-6.

Constit's totu on aphyden
active, slough.

Again my have prout
of throat - Acquiring appen

Other 2^d skin. Treblison =

Syphilitic eruption = disease X
of nail-bed. Begins at
cuticle of nail & goes rapidly
forth ulcer. Extends under
till all diseased.

Alopecia
Alopecia or baldness of X
syph. hairs of 2 break
down & come out in handfuls
& are full of particles. Type

Syphilitic - or in form of virus
(Dr. Buller will state it)

Rapid eff. of lymphatic ~~and~~
in spots size of millet
seed to pins head - &
not able to seal close
eye & windows.

Crumbly 22g ~~of~~
or ~~unmixed~~ - $\frac{1}{2}$ & $\frac{1}{2}$ &
then comp 2

In 22g $\frac{1}{2}$ best
In 22g 2 $\frac{1}{2}$ $\frac{1}{2}$ best.
In 22g it is well to
combine them. Continue

for 22g or less pill or
use ^{protiodine} $\frac{1}{2}$ & $\frac{1}{2}$ $\frac{1}{2}$

Calomel has act on
rapid & iniduous.

Protiodine 2 $\frac{1}{2}$ per pills
(Sugar coated) 1 after each
meal.

After 2 or 3 weeks use
K.D.

R Hg bichlor. 2 grs.

or Hg 2 — 2 grs.

Hg 2 — 23

Fluid ex. Sumpfills (no effect)

or cap Chlor 23

Water & syrup to 63

Use 1/2 with Sumpfills & add -

Hg & inunction better
in some cases than of mouth.

1/23 been bit. rubbed in
w/ right to porous & smaller
only

Inunction - can't pt.
on can't both chin - cover
blanket & take 1/23 actual
in the part with a spirit
lamp & pass around pt.

a note of brig. ay - at
same time to can't actual
to not be taken.

or {

Hg poisoning signs of Hg Cl₂
in 1/2 gr. at each sign. at
night & morning.

Opilids =

Little above & below
below -

Some throat & purple.

or the fungus -
whole fungus -

Disc of nail

best among nail &
destroying bed of nail
& black. comb.

So. of the badness -

Hair pins after septum
saturated by H₂O.

W.D. Dec 6 1877

Section of clean joint.

Paint very good, from dry
A single straight line, high
width 2 in. from the clean
cavity to all sides of
bone. Separate sides. Pass knife
the whole trip round. Lay
out - the dim width of
int. shell. A clean clean
new, & avoid it. & finally
better in single of clean
& put in caps out opening.
If have with a couple and
do this a joint. Not work
on the bones: do not disturb
the brachial arteries - & keep
away from the int. of triceps.
Saw off the anterior surface
of both radius & ulna. An
ant. - draw down the soft
parts - now proceed to separate
the soft parts from the humerus
(re-apply all these vessels.)

The best saw is Boxley's -

Mr O. removes the
pericardium & under to see
it. i.e. only the edge
of the outer part gets
pericardium. In this way
a new pit is formed,
about centre. The
arteries is tedious & requires
practice on dead subject.

The results with
cut put & escape of
with cut put & wire
outlets. Place limb on split
or not & a limb in sand,
find fault at 2nd or 3rd begin
pericardium motion &

Hydrocele.

1st of quality of testicles.
The testis is found in
below kidney being to be seen
at 50 ms. by at 75 & 90
& in section.

In passing abd! carries a small
 of periton. into scutum &
 goes to truncus vaginalis.
 This at 5th month closes at
 the abd ring - some exapts.
 i.e. runs ~~in~~ one with the
 periton. One ^{or} test! dies
 out ~~in~~ this ^{or} ~~is~~ called
 Crypt. ~~in~~? i.e. do not
 appear in the scutum. One
 test! in ~~periton.~~ ^{perineum} seen by Dr.
 Raddick in Manchester. It
 was decided to remove it.

Hydroph = effⁿ into the
 lutea vaginalis (1) acute or (2)
 chronic. (1) Acute. seen in
 (2) Cornu or paderf in children
 or any age. In children at
 birth ^{= congenital} heam not closed at
 ring and should. As a ~~case~~
 rule no cause - sometimes
 very large up to size of head.
 with 100% ^{of} ~~it~~
~~in~~ ^{of} ~~it~~ ^{of} ~~it~~ = 10. Per slope
 in ~~periton.~~ Dr. P. P.

Dignities - Skin of patient
tense. A tuffi' structure
study but cannot
define it. Light in
wh. Best sign = its
translucency - Best a candle.
Look thro' microscope will
see a red spot in center.
It may contain blood or
of thick & syrupy as opacities.
Wells may be as thick
as nail & pass light - ~~It~~

The serum is highly
albumin & solidifies on
boiling - of syrupy in sign
of cholesterol. (1) H₂O & K
K₂CO₃ for (Chernia)

(1) by is at both (2) at bottom
1 slow growth. Two feet.
2 soft doughy feel. 1 is
Arterial & of same
1 cannot be used & serum
(Cholesterol present. 1 no pain
2 (Strychnine) is very painful.

Butin infantile hydroce

can be removed by a set (1) behind
middle septum when old inflamed and it does.

Sp. (2)

Treatment.

~~1~~ 1 palliative

2 Radical -

- 1. Tapping of small testis scrotum.
top at same + anterior part.
taking care the testis is in
usual position. The pt. will
tell you when it is on pressure.

Avoid large veins & make a
little incision into the scrotum

- 2. we make an incision of kind
to inflame sac & there it.

We pour wine & water 157
& use 10g. Leave it 10 units.

For 15 or 20 years I or day 157

I put 13 & leave for 2 units

Then squeeze out the canals.

If fluid left 10g of 3rd degree

2 doses. or same water.

(early use it) 4 doses &

allow to run off.

What they will find red &
and will be about
Kup. pt. in two days or a
week. If much in fun,
use cold eye & lead
lotion. Dr R. has had
a dozⁿ cases of erysipelas
by such

the Cl. 13
dit. vizor 23
q. to — 83
Coffey Coulb. for 2 weeks
will cure it. If not
at 2 or 3 weeks, tap with
a neg. fin. taken or
hypodermic syringe. If
return tap again. But
do not injure it wth
pneum into pericard
cav. Kill of acute
pericard. Fresh surgery
use a truss & do right.
A truss will cure the
ring.

allied to the last i.

Hemorrhage = effusion of blood
into tissue spaces.

causes (1) traumatic or (2) ^{spontaneous}

1. a fall or injury on
chrysothrix of wound a vein
2. The spontaneous rupture of a
vein in a vein

Symptoms =
Sudden rapid full & globular
shape, purple in color
around area blood, black

and = (2) not true =
still conyate - Pt. faint if
much bloody.

Treatment.

Apply ice so as to arrest the
hemorrhage. At end of 3
weeks if still there stop of
inflammation set in, i.e.
removal from it. Open the
area freely by a long incision
turn out all clots - Suffer it
to rot out & at it granulate
in bottom & powder ice

lungs & blood poisoning.

My microscope for ocellitis
also for cancer ^{but this} ~~them~~
{ just from n. & study
up and bound up.

Mention of the Pectus.

Practical pt. on exam. of rectum.
Pt. lies on left side. in
ord. Spalt. ~~part~~ but in a
man if not quite certain
at this stop, well over
a chair, for then can
~~see~~ find cords of prostatic
gland. Do this before you
prescribe for leuc. See if
wants condylomata on
hemorrhoids or perit

Exp. on with finger &
sh. feel no dots. no
faint matter. In exam.
of rectum (1) Duplex (2)

Dysuria x (3) caecum.
Dysuria in all an same.

morning sometime as soon as
his feet on floor. In
morning too & 2 or 3 times
before midday. This morning
& then & about. Some
pain. This morning with
finger - a deep - on the
inner side of the - a fine
line indented deep & in
the - of the

Treatment

Rest in bed & pain - 2 days
of rest with bandage
& if able to get up
with N₂ or light N₂ - Band
out of arrow root & no
oil - oil or castor oil to
soothe bones.

Of (2) entire thickness & only
the inner side to sleep of
of the - if deep - 10 days
Of only in the - 2 day
Sunday of 10 & 10 - In
P. one of 10 & 10 of 10.

Aj cases might {
disrupt. & sp { 1/2 m 4
1/2 m 4. belladonna - &
in as sufficing. of reg
for some parts of
Colombia -
Virginia -

Wednesday, Dec 2^d 12th 1877.

Forms of cancer of rectum

(1) Schirrus (2) Epithelioma - eu-
(3) Apheloid & Colloid.

1. Is common known
as undulating ful. & encloses
rectum - 2. Is epithelioma at
anus itself & may be removed
by the knife just as cancer of
lip - It is rare but rapid & has
often killed in 3 or 4 mos.

Colobry is performed for it.

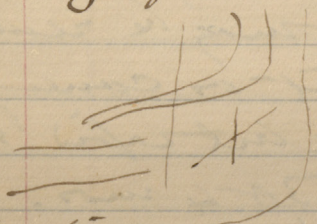
As with tumor - pain &
hemorrhage & ^{because} blocked up bowel.

Operation - as follows:

"Callisynth^{is} op^m" Pt is chloroformed
head on right side with
pillow ^{under left} & speculum between
stand in front. Pt is on the
dorsal' colon. Best at ^{1/2} with
the transverse. Find out & point
Spinae p^{er}is fillium &
membr^a & take apt. 1/2 in path & center.

Make that mark being in
 line of column & the quadrants
 & number is your guide.

Begin below - cut rib nearly
 half-way & in for the
 spine & carry it down
 to the next - open spine
 closing your work



The first work net -
 cut down *dorsi* & the
exterior & cut a whole
anterior ^{transverse} *long* $\frac{3}{4}$ *from*
of *the* *lumber* &
 make all your success equal
 by so as not to get working
 in a hole. Mark out the
width of the quadrants
lumber & there is your
 main guide to the fit.

You will now find much
fat & right amount in
for the gut. Now feel
for kidney. The gut may
be full of feces or better
with dis - not ay. Now
open at the back part. Roll
it round & open as far as
possible as possible.

Smother the portion con-
sist^{ing} of behind - meserion (rare)

I hope stem only first. Then
the gut - but for a sick animal
best - but longer the gut.

Pick up the gut. 2 needles
& 2 threads - lay second it
well open the gut for $\frac{1}{2}$ in
fine & with finger draw the
loop in cut & cut in
in cut & you have 2 and
Lem about, with of spring

Apply carbolic water. Cut
the discharges. & so leave it.
The above is by incision & Bryant's.
Other methods - to the same end.

The great danger is
peritonsillar abscess
with diphtheria -

Diphtheria apt to follow
of pharyngeal cancer.

As it is always found in
the annals of the small
as well as adult even
No. 12 ~~case~~ diphtheria -

Symptoms - diff. diptheria
straw yellowness of color
from films. Short thin
x ribbon shaped - ^{Scybala} ~~straw~~

Record also of history.
Treated - by dilution, and
of bougie - of a "can"
of Treves not fine w/ g. incise
it in several places - with
finger - etc. must be
two days to knit it in
No. 8 Glass.

Report is that in "mortality"
it is followed by recurrence -
Don't forget the danger as old
cases did - etc. etc.

Polyps of nose & affrs of
nose generally. Some troublesome
& require care. Examine
the nasal cavity by a ^{Rhinoscope}
"rhinoscope" or Laryngoscope X
so as to know the true type.

But without it may do with
vd. during progress.

Polyps 3 sorts

1 = gelatinous mucous

2 = firm

3 = malignant.

(1) - Always proper for middle
or upper turbinate bone. Also
for septum & rarely for
antrix. Slow growth
in year - is soft & fleshy
tho' - more emollient than
falls with mucous.

On examⁿ with probe
find it adherent so that
it is indurated - & it will tell
you largest in wet weather, &
smaller in drier weather.

Caused nodes to be

Pharynx & p. profunda

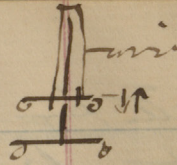
of body of ^{Eustachian} tube & blocks larynx

and p. profunda { epiphora:
X irritating eye. { epiphora

Treatment - with medicine
Surgical. i.e. cause chitz
of duct with tannin (as
Bryant) thro' a quill.

On point with tip of fall
so may not be able to open
a time or so.

It may remove chitz by
(1) emulsion - make out
its pedicle & pass the
Silphus group (small
for children) & pass the
pedicle - now go thro' all
it pins way - on a to &
fro' movement. May thus
remove a large mass of
loose & have int. use
more. Iron wire (round

the pedicle & of nail - 
draw it off -

Saline Cataplasms for suppurations -
or you may cut up the material
to use to give room.

(2.) Firmness of the nose - firm
root of nostril - apex & middle
lateral bone - one 1/2 in. high.
a few bacilli present in
bone of skull & extend into
nose & distal bones &
sinus. It is firm - compact connective
tissue of firmness - firm &
feels cartilaginous. It supports
all parts of it - & needs -

Support of the body of the nose
(not nasal)
Cartilage or connective tissue.

Secure attachment to the
bone.

May require to cut up the
soft part & remove a part of
the hard. I see the cartilage soft.

with force for some
out of mouth to had palate
specimens as above.

(Illustrate on Bob) Make ^{incision} ~~incision~~
down cut of nose - separate
the nasal bone by forceps.

Lead to \square point of bone through
nose as not to irritate &
it will die. It remains attached
above by pericranium. Must
push with act as a splint.

Also require to go further - &
remove entire upper
maxilla \Rightarrow as to get up in
soft of jaw similar process.

Pericranium - chop from pt.
incision begun at \angle of eye &
carried down to $\frac{1}{2}$ of nose (as
on Bob) across under nostril
& middle of lip & then cut off
lip - Now another incision along
border of orbit out to malar bone
This entire flap is turned
over face & held by anastomosis

Of parts - make incision
out from L of mouth, will
still have single cheek & feed it.
Now pass narrow saw into
nose & saw thro' entire head
palate (being removed the
inner tooth without side) Next
with fine forceps remove incision
also make piece of wood bone
to the orbit. Saw the supra
orbital piece in part of maxillary
nerve into sphere - maxillary piece

My saw the 2 pieces of a.
In separate soft part had fracture
fracture bone with long pieces
of a line in mouth can throw
bone entirely out - with the
knife separate the soft parts.

You will have hemorrhage
hemorrhage. Int. of eye or lac-
rim & tear bone. Take care
of infra orbital nerve - cut it
off part. Don't tear it. After
hemorrhage and can reach tumor

at base of skull & during
the ^{front of} bone fracture the growth
starts as apt to recur.

3. Malignant Polyoma -
rare - may metastasize
as a fibros. The form
is common - often unfulfilled
but at times the return.

Of course you recognize and
not a part of in opening the
upper jaw or above - and
will get corner. Like can
not to let for choice of it
even to proper treatment
a good pt. the later.

then simply feed - Gull
Culicid and the fine points
at liberty . . .

Wednesday, Dec^r 19th 1877.

Fractures

Causes - div. into (1) direct & (2) indirect.

(1) are violence in a dir manner
admit. or muscular action.

Dir. violence - as in tibia by a
kick - of ulna & dir blow
when arm raised. Fr. of index.

viol. as fr. of clavicle ^{& fall on shoulder} of the
neck of femur & fall on foot.

fr. of base of skull & blow on
fall on vertex

Fr. of muscles acting ^{on} fr. of
vertebra in hand - muscle of right
tear any bone - fr. of clavicle
& trap tear any or fr.

of os calcis also same -

2 - precipitating causes a age
as bones now more solid.

mult. in part -

Up to 3 years age in males & females
5 to 5 - very rare. Between

45 & up & mat in worn
They are in worn = rad
= cotton fr. web of femur,
of tibia.
For of. men = pelvis - without
column - skull, of long
bones generally.

Shape & part of a bone are
judging even - Thus
long bones and short
in. bones less so. as have
rare prof. of. caenis. &
common bones of leg.

Cost. of pt. or disease health.
Certain disease about bone
judging as cause of
bone softness, scurvy,
scorbuta, prot. Chroni
dis. (arthritis) rickets - usually
or - "wulvum osseum" re
just after & after end - rickets.

Bones may break
completely or incompletely -
i.e. entire or partially.

The present fr. in children =
small scale fr. of children, as a
mean trig. i.e. coming whole
& complete fr.

A complete fr. in adults
may be incomplete.

The imperfect fr. = same
class. i.e. more or less complete
but frs. dim. into each other.

Fr. also, ^{div} as to white wood.

(1) Simple & (2) Comp.

1 = Substantive word which
is.

2 = Div. + Com. with fr. + still
my full it. No matter how
small = comp. fr. again.

Comminuto fr. = simple or comp.

"Simple comminuto fr. & comp. do

Complement fr. = break in
form with vta inj. as if

main acty of the verb as of stg's
& rest of a part acty or a verb.

Again Discrep. with it = a
complement fr. or word of plural or of
less, & ^{div} with vta inj. & vta.

Simple fracture

1st Signs - the first pain - 2^d swelling. 3^d protrusion or abnormal mobility. 4th change of slope. 5th crepitation.

Pain & swelling are not pathognomonic of fr.

Swelling & pain alone cause - but the 3^d = the pathognomonic sign as cannot exist without it. But a fr. may exist without it - as an impacted fracture.

The change of slope is also important - may be angular from fact that bone \parallel or may have a lateral \parallel & longitudinal deformity.

As a rule the muscles cause the deformity.

Its crepant sound & the presence of its striated muscles. In case of thigh bone on inside & coming on inside - well marked in this fracture.

5. Osseous is very important -
sign - when bones will unite.

It may be mistaken for
the os in regard of joint
tender, may about joints
if inflamed - as in tendon
& forearm.

Osseous is due to the
& growth of the bone, but you
may rub a bit of osseous
matter, but this is
only rub particles -

It is an essential effect from
all parts of the body. in end ribs
canal. Pericardium, muscles &
all contribute to form the callus.

The encloses the end of the
bone - a fracture, at first is
very soft - "provisional" callus.

at first very soft. Crowds
rapidly down. Below the bone
the definitive callus throughout at
end of bone - after this the first is
also almost entirely.

Then most soft part and
most "pore" cells. As in
tibia little in front & behind
in same amt. - very thin.

A note just as
Substratum would be -

Compd for. etc as open
and - granular tissue
arranged down. - As long
as solid and open no
union -

Insulation of samples.

1st July - provide for ft. a
suitable bed - should be narrow
so as to apply for both sides
& amt. to run line by
amt. for both sides.

Matters firm & even
as a table - no peaks, heds.

See that cloth is properly
reunited. Cut off shoes &
cloth & make them distinct
pts. - dozen of counting

or simple fr- into cupd been
some this hope.

Asate white simple or
cup? Make good dignori.

Don't defer setting it till
tomorrow - Set immediately
as eyes left sleep the
muscles fit & more the
deformity & drift in setting.
Material to use - all expd. in
position - of course use -
wooden spools & a box
spool filled with bran -
here to use at first.

For upper eye - except collie
for fault within parts bond on
interposition.

Remember (1) that bandage be
not left to die to go. Reason
that will swell at any rate &
constit a ^{very} serious pressure - &
no gain. Now bandage when the
an 2 bones to set. as if pres-
sure - will do by the interior space.

Secure the 2 orientals in
corn with the fr. as spec. of
fly. secure knee & ankle
as will bear if moved.

With a spirit-oraling.

Realty also German
Surgeon apply plants of hair
band including an occlusion
of the Sin W. from and
stents. Gauze used.

There is that more
or less suitable - if apply
of blood may cause trouble.

So the apply temporary splint
for weeks days & apply the
in any apparatus.

Fractures sometimes will
irregular - as they are.
Before calls for reduction
& compression & bandages.

Of our interest or
if ruptured and are treated
in 30 to 45 days Chloroph. &
Use force - as knee apart for.

May have delayed union. Or
Or Great of Civil in a permit
spent & being put up & more
sent - firm times. Remove
efforts - very 3 or 4 days, & apply
I or copier - oil - or farads
current to Civil - Causes =
interest of unwell etc. Or
pt. is in delicate health. The
Art - of the bone stay or if
richer. Part of nutrient stay
of the bone. i.e. if bone not
used on pt. the app. is apt.

Bluntly & app. of bone in
an heroic measure.

In non-union of the way
months - great unwillingness
& trouble as do blamed joint
& low sub on -

Involunt - or as same that
(if bone in joint split) union will
not take place - best chance
to break up adhesion of fibres
union & draw ends together.

Then put pt. into pen & opened.
Of final work incl. needle into
soft callus, & then into split.
Or into scutum ^{quills} before part.
clean for days.

Or into subcutaneous a
Hemostomy tube & work in -

Or use Brainard Drill
(of Chicago) Make small
wires to insert & insert
drill & bore end of bones $\frac{1}{2}$
in from end - so as to in.
callus or -

Or Cut down & insert long
pins several -

Or turn out ends of bones &
saw off & wire the top of
arteria copularis -
sawing & not recorded
as cows simple to
empty for.

Monday Jan. 9th 1898

Spent balls sticking, buckles, buttons
etc. upon "Wired" curtains

(2) Spent ball may stick in skin

(3) may penetrate & carry in
button, bone (of thumb) etc.
again may become & fall
out of same wound.

(4) bullet cuts at 7 ft. &
escapes at another opening of
extremity.

Sometimes wounds of imp. &
dist. 1 ft. apart. Diff. due
to movement of ball &
partly to rotation it makes.

If close ^{to skin} will make small
round pit. If soft tissue
will bore little movement
& now ^{of it} will differ little
from that of gunshot - as a flesh
wound for example - If strike a
bone - sp. of pit will be torn (a
momentary sound) & raised.

As a rule of part - inverted
eyes - exit - inverted. Ductum
open less in diameter than bullet
itself - Possible show 2 spings
of part - as when bullet is
split or its surface layer
it splits of bone - The
internal = track of bullet.
penetration - directed by
bones structure or fascia
or may be unaltered ~~but~~
if surface straight, as
round a leg. Again surface
of the stem pass round
only dark - may suppose
you the lungs get have
no lung symptoms.

Symptoms =
mainly pain - some shock
little hemorrhage - severe
after inflammation - pain varies
most severe if bone fr.
or eye cavity opened.

When soft str. alone - usually
from blow of stick or whip.

In midst of great excitement.
Sufferer does not know till
eyes blood on is told.

Shock in face - not
injuries greatly marked except
when large scars appear on
parts. Pt. trembles, totters,
falls faint - perhaps vomits.

Looks anxious & distressed.
Shock itself alone suff. to
cause death - as to shock, the
brain trunk the parts to shock.

Hemorrhage.

Pulse = fine - slow w. d. Keed
like the other injuries.

Arteries of stump bleed
little - from same reason
as loss of $\frac{1}{2}$ inch
became more & more
tortured & convulsed & the actual
tor. & slow on it. So saline
tapes off & admit.

Artian rarely cut across.

Lie in the alluvial
terraces. small size,
slightly bed of coals &
the fluidity of their contents.
So slip away for better.

The World of art is an
almost fatal for knowledge
Dayer of art for
slope for near coast
of better - my hand print in
2 or 2 by knowledge.

fun - hot wind - inflame
irreversible. infiltrate &
become true. So me
of the contact results -

Causes of elements &
slipping of terraces.

Period of great age
between 6 to 8 or 9 by when
slope begins to separate.

Now water carries.

Consequence (2 day) knowledge
apt to rise with no warning.

This is more days the printing
has been sent so well
catch up on the 1st, it
is now done.

2nd day keep my alarm for
of the of printing, one of the
parts. So sent it as
have the bellit;

Prognosis

Death from shock & pain
hemorrhage. 2nd day or
indirect from 2nd hemorrhage
crisis with few signs
of anemia - or - as the
result of an operation to
save a limb - a simple
excision.

Treatment (early)

The aim is to stop the
flow of blood of certain
amounts. In the case
of more serious wound, fear
it will be a result of
comfort of the circulation

imp apply in suit &
put in easy position.

Of which means necessary
raise limb - apply
compress.

Of arterial bleeding seal
vessel for it with cat
gut or silk - above & below
(= both sides),

Of out-pulse apply elastic
bandage or tourniquet till
can catch vessel.

When time expiring (if it be
no self) examine & find
where wound & reason
bullet in. & adjust - etc
parts. Examⁿ best at once
as part are still numb
& little swelling - Clots
easily raised. See if any
other cause in fracture.

Place in saw frame as
when need. wound. as now
track of bullet ascertained.

No search on any part of
in head chest or abd.

By far best method to explore
in the finger and for this purpose
the surface of wound suggests
incision.

No inc. can give same amount
inform. of ^{bone} hot log cylinder
or too warm, use probe.

Small etc. log silver probe
best. Use with great caution
not neglect injury on vessels
& nerves in the trunk as an
artery found inside & fully back
into trunk.

After the most expert will fail
with probe. Now, ^{more} sensitive
detectors used in last 12 or 15 years
= Relations' purpose probe.

He found last porcelain canister
marked lead. Elastic "intended"
probe with (originally) a stiff handle.

Am. modification - ~~xxxxxxxxxxxx~~

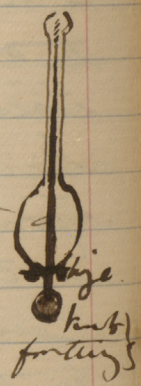
Sign. shippers, also electric detectors
or ~~or~~ indicators to make connection.

For extraction of bullet a.
Coxeter's Extractor. = a sort
of Trocar canula style -
(longer form)

A modification of
Ferguson's = a sort of
Smith in - grand pupa.

Volkman's scoop - used in
case of ^{the} private practice -

Prep's forceps
Woodcock in 4 & 5 ranks,
Potts case of man - stroke
on canal.



Gun shot wound - chloral -

Gunshot wound in Chest - Diaphragm

- (1) Non-penetrating - (2) penetrating
- (1) not serious, but slow
heal & followed pleurisy
as pleura - rib & dia
aphragm into pleura.
- (2) Menstrual days.

Diaphragm lung is injured.
By penetrating cont. stroke -
Cope for blood & effusion

bleed early. Dyspnoea & cough.

Reverts to dyspnoea & cough & coughing
in morning or
intermittent at night.

Hemoptoe (or blood in
sputum) indicates that lung
has been wounded. Purulent

sputum is ~~not~~ blood - so faint
as almost to elude the eye

An intermitting
cough will make sputum watery.

Blood will come in 24 hours
partly stop & range of the
fever - the time to look for

the return of cough - with
small pulse. Dyspnoea & cough
to be expected.

By ~~the~~ ^{stasis} blood joints &
back & gradually increasing
cough & respiratory murmur.

Empyema (into areola, tension)
and late and small & benign.
when a patient feels well & pleura.

As foot becomes large &
glue both must be
wound. The accumulated
air, being exp^d is pushed
into arched tissue round
lung. & as it cannot
escape will spread over
entire body.

Rept of peculiar case of
Cholera found in a party
of the officers -

In most cases symptoms
of cholera may be seen
the 9th of the 9th of Oct. 1831.
Prognosis

Injuring organs but not hopeless
Dyspnoea, hæmorrhage & diarrhoea
& 2^d inflammation.

Treatment:

1st thing is to arrest hæmorrhage.
If collapse not ^{very} deep
Don't stimulate around & enjoy
because when - collapse
removes with better effect.

All foreign bodies - seal the
wounds & bandage them - But
if not amenable - ^{may} take a
pin of linen & pack it with lint,
into wound ^{line} ^{superf. of body.}

Search for ^{arteries}, etc. in
boys. quiet & intently give
aerogens - Rest - pulic (pops)
and such action of lid & drop,
or give pin every 4 hours.

Hydrophobia also can
be expected every 4 hours (5 ft.
each time) No meddling
with in chest wounds.

The old plan of sealing
hermetically is the ordnung.

Should violent reaction
improve & during dyspnea
water - bleed to 20 or 30 ozs.

Time of rapid pulse
flushed face & by the time to
as to produce collapse & fainting.

^{the pins} ^{with} Stroop side of chest to
control ribs by on inner side &
pin up ^{each} ^{edges} ^{only} ^{into} ^{ventr.}

Wednesday, Jan. 16th 1878.

Hip joint dis. =

Martius coxarius (Coxarius)

Coxaria (= "pain in the hip")

Martius coxarius

& *Stenus* & tub. dig.

by mist.

Sten. = *Stenus* sp. but

not nearly a cupress

but. as sp. sp. well &

but too gen. & tub.

then & after remain

sp. sp. up & get well.

Martius is that local

but is all *Martius* sp.

& was a dis. of *Stenus* sp.

sent sp. for 20 years &

sent 7 to 20 & after 20

years rare.

Sten. = *Stenus* & to sent part

of joint in aff. All begin

in water, spinal tub. &

head of *Stenus* (from water cut) &

only. *Stenus*.

I want it is in spinal
muscle.

Clinical facts.

starts eyes with child crying
in morning. but crying
was off by day. Pain
not at night, distals
sleep. screams in sleep.

Starts eyes, crying & claps again.

From leg action, now
in forehead with pain.

Where is the pain? - in knee

but press on knee no pain.
Get child eyes & look knee
is supple there & healthy -

Stiff & see powder.

stand. on one leg. Then the
sprinkle on forehead. Be
infect. find knee perfectly
swelling & can compress,
without pain. Show leg out
of child arms & eyes. &
head? arms but not so much.
Then of the part is people

State structure of hand &
finger is studied. Starting
up the inner or ~~top~~ fat
& chest pain.

From his book & will
find glacial eye not
rounded like Sept. is
flute. • An ~~fluted~~ ~~fold~~
several fold is shallow.

Of female pt. the
vulva is lower on afft.
side. Leg afft. stopped
(movement). Place pt. on
table with hands to neck
& a tape kept the legs
well fixed back & held
so that back flat & leg
flex. limb afft. It
looks like but not. is
perhaps shorter. Why? as
pink purple. could rest
on sand limb & so sink
pelvis of a week by side.

The Pain in the side is due
to 2 or 3 causes - probably
of that to nervous system.
The most obtundent when applied
to the eye & nose. The Scientific
& fluent & perhaps acute
crural have to do with pain.

Acute course = acute
for end of fever -

Acute course = usual
of fever -

There is a super-heated
stage -

Get health in the eye is fair
appetite normal & patient
well prepared?

In 2nd Stage

The most part will now
marked i.e. pain in knee & all
of some parts feel for it.

No real shorting
abd. expansion & pelvis now
is marked tilt of with
effort and as the fall of two
stomach contents - & all -

second stage.

3rd Stage - or size of
Anopheles larva. all with
on tops of toes. inserted &
abducted - the effect of 2nd stage.

Now no doubt, a
few forms of pupae
on some - in some
suffering. Cephalic
part (in pupa) seen. Head
now turned & retracted all
= one mass. Part of
the body nature - Laminar
part separated. This
is folded in a few days
by addition of cells & tissue.

Subcutaneous veins
eye & motion nearly
fair. make them sit
renew them in red &

slightly faint. Sup. lip
also seen. epia
sweaty = rule. Erupts
in war from individual &

Matter works to recent surface
Papers appear - here you get
fluctuation as a rule should
open. Usually fault striking
of pit, usually down middle
ant. date of pit. of type. Or
fluctuation again. Dep. on
part part of capsule rupture
or to some places at same
time with by tertiary sense.

Of anteburial dis: my
reference to your two I read
about a surface of strat
roots & need do put in.

All this time job is
being thought & organized.
and work of few months
my till in tertiary state
lead to tertiary or.

Bands of anteburial lead down
of pit of pho & plaster walls.

I was visiting plan for
and I wish of bone. Now
and in between ones.

Head of bone to dorsum of
illum. Sudden

& pt. stand as you
try to get pt. from do.

Now more about
a thing of the leg.

Make out muscles

& ~~muscles~~ or ~~muscles~~
lines.

Shd. Syce not get
him together. Pt. runs

down & dies for drain &

very dry skin & kidneys
or

Arteriosclerosis & pt. get well
after a while.

What gets remains pts
amused & bored of culture
& little apt study.

Occasionally bow will
for a short or
down of illum.

At the drain camp with it.

1 Strain 2 rh. 3 pason
above camp

As to the a few days before
clear up region - Sider
ferr in trace up to 2.

No platy of Mottok in
with. no white of the field.

Not after the 3 is an alkali.
Dif. is out in form than
by always felt just above
Poufats lit. & felt below.

It lessens when pt. on
bank. Can find pass up middle
this not in high part of
Get pt. to edge set in park
in Pons over also in grey
clay. Not so in high pt.
In this to pass in
back on on of drain camp.

Noise in pass of the bank
no alt in light of limit.

Seldom over upon part
shows light pt. di. = chert bed.

Pericarditis of great tenacity
is not put on. pl. &
all eyes a cat.

Prognosis

Days & life in hospital
acute & continuation of
suppurative & sinus of
bones (of pelvic cavity)
and actives.

One joint infected, can
never be cured. That
lumbar will not
result. For years of life
can ^{amit} in ~~it~~ eye.

Treatment.

It is most important
is rest.

Shd. be cured &
see case in pl. eye
instantly with opat-
herd & pi. limit
of soap, belladonna &
chloroform to rub eyes
& moving. All over

of the importance to keep in
mind 2 mos. at least or
longer if do not abate.

As child will rub
off a stable bunge &
sink to control all part
of lower edge & have a
parted felt on his
joint. "Kudon" in it
to supply limit. the
above limit. or joint
with 2.

of the ^{say one 6 yrs} old & hearing
put at one or two main
aperture - on firm matters.
2 lbs. wt. to be used.

The by splint
and some is a mistake
in his. The more part
of the wt.: true or false
of on his to end of bone &
not apart so will matter.
& in the end of the - If
it - hit up - claw and. ^{control}
it is known.

Each bill & note - one.

Spain appears denied for
this. in practice &c. etc.

Some old, already
(by bill) 2x4 in one treaty
the position & sent on
Suppl. explain & pr. of admt.

Inclined six & pr. with
from & sent $\frac{1}{4}$ ^{in whole} on it.

Suppl. & Mem. int.

Part = annual country
in fact & held in. atty
& suppl. paper & admt.

Internally

As no pr. pr. do. 1 or
2 pr. of each side 4
& which 6 570 pr. in
3rd & 4th & pr. admt
& apmt.

1000 1000 pr. each
1000 annual with pr. of
(The old sum - time of
the work).

Of straws pt. give cod
lin oil & hyposulphite.
& sup of iodine & iron.
Inodous & pink & 200
2 adg.

As abuses for open
cut. as legs to more
visibility - The shells
best 10 to 20 per. Quin
by day as by a best &
Quin 10 to 20 per. of
Dit. marking
Clean cuts daily
with 10 gr to 2 gr of Gall.
Cucullin in a
1/3 & part of
Of dehydrate around
up to 1 no. per. per.
put pt. under cap
& from down hole &
fill it - old site.
Hard to retain it in
one as no salt. but
& fever ^{attending} _{part} ^{of} _{the} ^{paper} _{was}

Excursion - When? when
did bone and out in joint
again. Put pt under
crab head of bone -
on if sinus exist
from pubis in dist
sent bone - saw
with regular - saw
did bone when you put
as joint sent to see
cannot be injured.

Of substance in
in such direct results
to subject pt to it.

Embryonic report case
of such of iller given
it just it -

Pl. old he in joint ends
no analysis to - no
tubule - by to, etc.

Wednesday Jan. 23rd 1878.

Amurals

My nuch or triceps.

Both crystal & non-crystal
aring from process of
stern - chond - inserted muscle
had 80 per cent 3 1/2.

Down out & to opp. side.

Symmetry of feature of. Muscles of
opp. side not so fully developed -
is a flattened & full in of chest.

& L of eye & cubitus of that side
considerably bowed. & L of wrist
bowed.

Supra- & scapular
muscles slightly opp. & chond.
& had drawn to the chest.

The stern - inserted of that side
lower it of eye. is a radd
4 ft 10 in & of 1/2 as long as
by 35. 2nd stands out in
slight relief also - using the
actual measurement implied.

By the civil ^{method of the} ~~method of the~~ ^{curator}
the court for the benefit to
the aff. ~~under~~

Very much is more frequently aimed
follows an attack of insanity
or subit ~~per~~ or injured
civil ~~stand~~ - also to
for ~~prognis~~, ~~some of the~~
stand - ~~monitors~~ ~~not being~~
no antiquate ~~draw~~ to the aff. ~~side~~.

In ~~what~~ ~~cases~~ ~~of~~ ~~insanity~~
ought ~~not~~ ~~to~~ ~~be~~ ~~of~~ ~~the~~ ~~kind~~

the ~~of~~ ~~the~~ ~~kind~~ ~~of~~ ~~the~~ ~~kind~~
fault. ~~Acute~~ ~~for~~ ~~a~~ ~~man~~
will do it.

It is ~~caused~~ ~~by~~ ~~the~~ ~~kind~~
~~of~~ ~~the~~ ~~kind~~ ~~of~~ ~~the~~ ~~kind~~
traction ~~ie.~~ ~~of~~ ~~the~~ ~~kind~~
Treatment.

In ~~the~~ ~~case~~ ~~of~~ ~~the~~ ~~kind~~
will ~~lead~~ ~~to~~ ~~the~~ ~~kind~~
~~of~~ ~~the~~ ~~kind~~ ~~of~~ ~~the~~ ~~kind~~
confined ~~case~~ ~~of~~ ~~the~~ ~~kind~~

the cond tissue. The cond
wound is thin subcutaneous.
(9 all sub cases) { small
further word & narrow
tuck the tissues. Any ext
bleed & adve of air words as
much as possible.

Of these granular elements
in tumour, extent & occur
& during treatment, the ^{cut} end
of the tendons &c. will unite &c.

The spot chosen - that
at which the tendon & lig's meet
rigidly and fracture from
the sudden jerk. There is
the most space for knife &c.
So in Ludo - ulna, in. ulna cubit
&c -

In any case it is about $\frac{3}{4}$ in.
above the clavic. In a delicate
operation in ant of the muscle.

Abundant & pale hemorrhage
follows. Make a puncture into
with any knife, small sharp pt.

best at joints - birds of S. Am.
cut the heart of ^{1st} keep inch
under & close to muscle till
reach its ant. border. Now
turn edge up & press with your
finger & an ant. hold the
muscle tense. (Not to slip
as my cut muscle.)

Every tenotomy knife shd. be
marked ^{on handle} so as to know which
side is the blade.

Of clavicular origin be broad
best to divide each portion
of a separate function.
i.e. for ant. & ab. parts.
etc.

Dressy = squeeze out all
blood - & put a pad held
in place of a clasp &
bungee head inside to
side of - on per 2 or 3 days
or at all on the skin & hand
& stop hemorrhage at
end of this app's efforts to

rectify posⁿ of head - by pass
plate 2 - wide round forehead
& with satchel bandage &
carry a bandage over top of head
across to it. Pass also
a piece of plaster over waist
stitch & a bandage. Now
carry piece of tape for round
side of head over ear on back.
So as to draw head round.

As any apparatus will become
inefficient, the manipulation of
hands of nurse may head so
as to make tension in orbits
much.

Spasmodic very much in old maids,
- which is in. jutting of
the neck of one side. So
to make that ear will be
drawn down & clarified.

Mind & eye tains salivary &
clutching, give relief. Also food
for mental dietetics good diet
& rest - also teaching & exercise.

Even now been known & return.

In paralytic any work
not to separate a suitable
musical except for and
palliative treatment,
Of the disease of civil
virtues. known by history -
pain on motion. Tremor
appears & swelling of glands.

Care is having but the
bones fine way.
The testimony is not precise,
but sufficient to read & give medicine.

Memorandum on Pills.

Enter 1st or 2^d interval.

- (1) As the case, have as some
balls round & many of
anus (or) within the
of glands but attended
by strain.
Old carriage (a) blind (b) leading

(a) = rect. (b) internal piles.

A hemorrhoid = a varicose vein of the rectum - ^{conspicuous} as a varicose vein of lower leg, and varicose or varicosity of internal veins.

The blood returns from rectum by 3 veins - ¹sup^r - (2) middle & ⁽³⁾infer. The superior is the most ^{it becomes} important vein & enters the liver by the portal vein. It is supplied by valves, & is completely in forward con-
struction. prevents every return of blood
As for ad. filling of sup. & infer. of liver, tumor, hardened feces -
= rectum & rect. this vein becomes greatly enlarged. In fact can all 3 become enlarged.

Result of this = straining of vessels & then by protrusion - i.e. become varicose & supply at end of rect. So the part above the sphincter is the internal pile & anal etc.

is caused - contains in the
with pile.

Commence as a little purple
lump. & fill with clot -
fair & itchy - so is meant
in city - By if it
any become abundant - the
Saw is covered - a few
results. Now if this have
been repeated several times
the entire margin of the
Aunt is covered by them.
They usually redify upon
from

Treatment

1st remove the cause. Stop
his drinking. or if continue -
soluble purgative & mild.
If not must taraxac
purgative out of ^{usage} pills. &
fill the sea with oil & other
work & forline & into a
support & other when
needed - If will not

subject to operation.

but. = = feet exposed & balladrum
& a woman from the one.

to apply ice. or lead colic with
caudum.

The fold of skin may be
snipped off for a second
or third time. Not to make
or spreader extra & straiten.

The attack of piles predisposes
to another. So in cure.

from a pile diet. Well
cooked vegetables & ripe
fruit. Exercise short & frequent.

Sheep - muttons & both parts
very useful during the cure.

Start by day - to take

a part of each of black pepper
& sulphur & summa. a simple
lyth & ring; & Calceidry.

Internal piles

can end as usual. Very
common in lying-in women.

Presaid to be hereditary.

Either neuro or arterial
bleed. Sometimes during
Rhythm fully blood on
sudden anaemia.

Some type of a neural
form at every stage. In
old people always. Presaid
card.

As a rule utter pain
from interst. files.
Blood sent to ut. dia
& return.

Treatment.

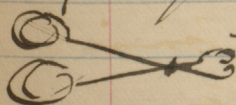
Same as for other form
seen but see.

Operations

(The old plan is to cut off) how
1st ligature 2^d clamp
cutty 3^d Oranum
4th fulcrum cutty
5th clamp & traction 6th
7th remove cutty.

Signature,

fine syringe - control - in
syringe before. The a pint
or 2 of soap & water, wash
up you are to wash eyes
It is to be put on a bucket
of water & to strain ~~so~~ as
to get well into view. Now
prop up with paper for the finger



Then a needle & thread
pass it ~~the~~ needle
thru the ~~middle~~ ^{middle} ~~of the~~ ^{of the} ~~thread~~ ^{thread}.
cut off thread. Best to make
a little ~~to~~ ^{to} ~~make~~ ^{make} so as to prevent the
hair from the ligation is easily
thru. will have blue & sleep
off in 2 or 3 days.

Henry Smith of his call, he has
Spots of 2. Clamp & cautery she
is better. cut off about 1/8"

in from the clamp & sear
sear it thoroughly with hot iron
& thermo-cautery. All that too
red hot or apt to bleed. Remove
clamp & ~~off~~ is complete well in
2 or 3 days

Shure as { leg. later @ 20yo

The other method not worth
debating in detail as not
used.

Operation for pharyngitis.

Wed. Jan. 30 1898.

Larynx

Structure of Larynx.

The thyroid & cricoid cartilages are confluent, but traceable some parts separate. In a child 1 1/2 in. off. stem about 2 1/2.

Larynx is in the neck between the thyroid & cricoid cartilages.

See p. 4. in the text.

The subcutaneous tissue covers a set of vessels - the thyroid & cricoid cartilages & the isthmus of the thyroid gland.

This isthmus is extremely variable in size & shape from right to left. In children large & bulky. It covers the cricoid cartilage & is 1 1/2 in. long.

The sternohyoid muscle
do not ~~of~~ come together till
they reach the hyoid.

In the interval of course
{ fascia which also
forms off a piece to
cover the neck.

The sternothyroid come
side side ~~course~~
and so that all
covered by one or the other.

In children over 5
you will find mostly
but rather some bundles
then muscle, with very
~~little~~ arising from their
sternum. Under 5 the thyroids
spread ~~and~~ high as well as
to reach lower border of the
thyroid substance and thus
create cord ~~with~~ of these
pendulous ~~sternum~~.

See the ^{thyroid} gland of space of
2 little arteries in child and
eyes the thyroid. arterial
blood of ~~arterial~~ pressure.

See the ~~thyroid~~ rings of
the trachea in human or animal
no ~~arteries~~ ^{arteries} go to
capillaries, but vein ~~run~~
clayes, return blood
arteries in ~~periph.~~ parts of trunk
on the way to the main veins.
They are the eye and the are.
- a sort of net-work in
part of the pipe.

As to arteries the carotid
vessels outside & absent
in contact with trachea & so
my ~~to~~ & have been covered
of parts not the pipe in
middle line of trunk.

As to the up the size &
of the vessels.

The arterial in in in in
normal form in in in in

but sometimes as high as
the 5th ring. This has
also been used in treating
Artibeus lituratus =
the irregularly
above of the common right
curled ring of the
curled of broken ring and
my power flat beneath.
detached part of

in the 3rd space of the
laying 2 layers -
trachea 2 & 2 trachea

(1) = cut into rings of the
cris-tyred space. simple
& can be done by a pen knife.
= simply an incision in the
skin a few inches over the
space & they bend the membrane
you divide it horizontally
i.e. at right angles to the incision
thus the skin. which will
go down into the trachea to its
the center. So easy & quite
& good to know - can be done as

in case of Dr. Bell of Edinb.
said child's life.

May they condemn it.
The space in children too
small to admit later.

In adults life eye.

22 the integrity of the
larynx as a vocal apparatus
& apt to be injured or
destroyed = permanent. as
Verisimo of scottish Lo
= org for an effort when
proper intub. or in
such a case as Dr. Smith's
glottis.

A mistake has been made in
larynx the thyroid - thyroid ^{muscles}
i.e. above the thyroid ^{muscles}
no good results.

(2.) Larynx - tracheotomy crisis
is found in the crico-thyroid
muscle, (or cricothyroid) entirely
on the first ring of the trachea.
(Same spot as in larynx.)

(3.) Operation of Craniotomy
plan cited (2) on a
small narrow table.

Conducting a thin blanket in
net on a bed of seats.

During administration of
chloroform allow patient
to sit or lie in any position
it prefers. as a general
experience may seem to
suit body in form

from chloroform sleep &
cauterizing. & little remedy
of for time & increase
the skin as after that
no pain. Drums found
to side of a jack-towel so
that hand may not interfere

a pillow or 2 under
shoulder & root of neck so that
head be thrown back &
taken well forward. One
assistant stand at head of table
& hold its head & assist

to stand off - the operator -
they made a way of with
a pencil with it -
By the way - in
the middle line, and
into your own the
line - At least $\frac{1}{2}$ in
long - but to be the short -
For the stand - beyond
which an in view side
of side or only a ^{with} line of
of cellular tissue at the
occasionally the vessels
form into an anastomosis (or
decussation) It is important
to make out this space.

The operator & his
assistant - and pass with
a blunt hook into intercellular
~~space~~ space of pialis which
(as seen in the) use the
handle of the knife even
used the further more
by using suit & diamant.

Now pass & feel for
arteries & look for isthmus
of thyroid & make up your
mind whether will open
trachea below or above it.
i.e. the thyroidea inferior

The isthmus being movable
Dr R. prefers to ligate
open for the following reasons:
1st The trachea is more
superficial

2^d The veins of the front (thyroid
& jugular) are not here
so large & troublesome

3^d By being farther from
the lungs the air when
cut is not so much
thrust forward & so
not so apt to recur.

4th That a ligature around
artery or a thyroidean
is not so apt to be
eroded.

advantage =

On the hand the low level
1st more space between
the rest of limbs to wind
the intestines.

2^d you are further from the
disease, & so a great point.

This above all the advantage.

Many sayes that the
posⁿ of the intestines is of little
consequence - I am a friend of
Dr R. want this it is a
very troublesome humour
inward. & it is said one
is thus more than the disease.

The better & safer plan

is to make it out all and

can draw it out of my & why not
it? In some cases it is left
on the way down the now a
divide the 4 or 5 lb -

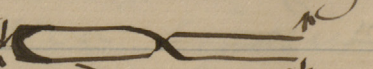
Having got to the trachea itself
with find some layers of fascia
= tubular formation. My hope
is to find of course - up to this

stage after bleed; Spine
well to a well the rings.

Make incision of skin
with back drawn into
space between 3^d & 4th ribs.
cut up to the 3^d & 2^d &
if necessary to 1st

After dressing in
young children hold it
X with a tumesculum & assist
to hold it if this. otherwise the
tractus will yield & it does
bright with & my wound
on off side.

As soon as the third vertebra
is cut will cry up news
plod in milk one.

Don't intro. canula
to one. Dilate of a
dilator 
of which up you will
intro. canula

An important question
is what tube you use.

Trousseau's tracheotomy tube
best. He was the first to put
it in Calcutta.
It is supplied with internal
canula to remove & clean.

Dr. Drake's (of Montreal) tube
opens longitudinally - and have
two for trachea - Drake & its
safety blocked up - Do a
modification of Fulla of London's
tube - "Spout-tail"

Drake. Its advantage is that
it can be inserted &
any size fat or thin.

This is Durham's (of Guy's
hospital).

The old opens int. - the trachea
canula int. - by Drake
my for the see.

Pant int. is a movable
plate (Dr. Drake has it)

Now the int being int. - went
the held of tapes & held Drake
under plate & and int.

The int canula with my of Dr
to use - take it out clean

Com with "Clas" abto.

1 & 8 of carbolic acid & 8 of fly
to brush it out.

Erysipelas in cellular
tissue - not sloughy. Due
to want of parallelism.

Due to child's head not being
thoroughly held in place &
both wounds not directly into
median line. Swells
up neck & face - a
little dyspnoea.

Erysipelas attacks cause
& diptheria may extend into
wound & form a pen-
etration extends over
chest.

Remove tube if bronchus
at end of 15 weeks. tent
by a phrenostoma tube, i.e.,
with an opening at top
• Tent its broad capacity.
Nurse & put neck into
it seal this a day till

cutly beneath a root. Of
diff. in swelling
food (milk) passing out
of wound. Records that
I usually locate the harney
from want of practice.

As a rule is one
a some a rem. into.

I not find that both
only take this nose (or mouth)
into stomach. a few per
cent. ~~the~~ Dress as
any other wound.

Wed. Nov 6 78. Dr. Buller in eye
Intis. 3 rows.

Class in peritropical ground - 3
products.

In each pair of injected
allth. in color - loss of
lactin - in vitality - in
pupae - in amount of virus.

(1) Simple plates in intis.
Depth. 2 rows.

As to pericoronal inj. can
be gone to complete redness.

There is no rule for
amount in all cases.

If very severe - much
swelling around injection of
cornea in the conjunctiva &
subconjunctival tissue.

If both much injected may
lead to Char. conjunctivitis
caused by impact virus
& see if all injections may
be readily passing up same side.

If be a case of iritis will
be the deeper red when cannot
press away. Loss of lustre
dependent on. Yet a dull
eye may not be iritis.

Conserve light & a lease
by candle light.

Adhesion early detected. Look
at eye in daylight. or by a
lamp & a lease. Ithenticate eye
& on lower & lower
& another -

If there be an adhesion
not so complete & tie down.
will find pupil dilate irregularly
If so complete then will
margin of pupil tied down to
margin of capsule & not
feel dilatation.

The inflame. causes for more
egate at the to make fills
of chamber. The simple part
not does not easily become
organized or a white at all

But remains unexplained.

Just for

(2) = Serous iritis

Some tend to deposit on
corneal curvatures but it
should not be at such a distance.

Congulate in the anterior
chamber & the pupil - on the
cornea. Minute dots in
form of a & the apex etc.

These dots minute &
only show as turbid to naked
eye but can see better
by lens.

In edema of lens depth
is absolute vision of aqueous
humor & of anterior chamber

appears opaque. Some break
out if both eyes open.

Just to twin hand, & pupil
not constricted. (I
saw in iris pupil impacted)
but in lens it is dilated.

Of further details of drops
near irregular.

The turbid and - notes
pupil looks dull - yet not
much redness of iris.

Is a - - - - - the pupil.

(The fundus oculi hyaline
deposition in eye)

Spain in the substance
of the cornea.

In the other notes no aff
of the cornea

(3) Paramelequitos or Purulent
iritis

In the form of the eye
in film was below &

capsule & fluid together

In this other is condensation &

tubercles, conglomerates, granules

or form the iris at same

time (pig - bands yellow red).

(Case of man whose plate passed into
the form)

(2nd) blood vessels visible
in iris in the wk. do not
appear in other points.

3 kind of cells infiltrate
iris — (a) lymphoid cells.
x (b) nuclei as nodules or
granular stuff to be
specific.

(c = 3rd kind of point) = connective
tissue. This not only
infiltrates the iris, but comes
up pupil & false membrane
is now the most distinctive
feature of the iris.

If purulent & pus in
the anterior chamber will
clear up & leave no
trace - hypopyon.

This depends on amount
& its settling position by
tilting the head. i.e. if
the pus be from iritis.
& it will now settle
over red. and also around

in 24 hours -

from books closing iris
by its suprad cause as
by ptosis, proptosis &c.

Adoles of brown & red skin yell.

& recent central ^{supra} papill

at its junction - In this you

can see app to the iris, protuberance

in supra axis, which not

seen from this head, will pass

to supra.

In Bull's account of "rheumatic

iris" - point is of the plastic

var. of the rheumatic iriditis

apt to recur.

From recent iritis of authors.

From rheumatic iriditis

pressure & iris follows -

Let well of iritis cured out

recurs on a fresh attack. It

is a matter between the plastic

& the

Recapitulating signs of
iris palsy.

all abn = objective symptoms

2 subjective symptoms

(1) = pain - seen at times.

(press. about brow) - in boxes
above eye, usually along brow,

Any part of SC nerve
fibres will be seat of pain.

With glare at same time

my day ^{like neuralgia} sometimes irregular.

- Pain worst at night &
involvement of eye. excessive
secretion of tears.

A drop of atropine every few
minutes improves this.

Tenderness of eye to
pressure is a bad symptom.

The 2^d Subjective
symptom = impairment
of vision.

Lesser in its nature important
than plethia.

Duration

Depends on time, & also on nature
of Plethia not well in 2^d cases.

Poultice 48 & weeks

Series .. 6 to 8 "

ie. always suffering well treated.

Of pain advances before treatment will not recur completely.

When advances extensive as that requires your current estimate hinges about before found a new not bound down - will soon perish if an actual profit not made. Reason is that too soft process. Causes quits.

60 or 70 p.c. of symptoms - with rheumatism - no cause & only rising. Treatment -

1st. Dilate & keep dilated & put 2d. ~~in~~ ^{the} ~~eye~~ ^{eye} & lens. Atropine best - both dilate & paralyze. Or use adrenalin too. 2d. is the purpose of Atropine - & in fair way to make a complete cure - To attain this complete dilate - use Atropine 4gr sol. of sulphate. 3 drops at night & 5 mts. at each 2 hours. for 24 hrs or even 48 before anything else. Dryness of throat & conj. as usual at 1st 4 hours. get under 4g. as quick as possible. Need not salivate but spray at end of 3 or 4 weeks dilate 4g. - then spray in evening with 5grms more 3 times a day. When you do not dilate. & influence better to 2grms more 2 or 3 times a day. It contains the atropine in 100 is the best.

20th
 18th
 19th

of vision - pupil
 of eye pupil slightly dilated and a
 e - 3 to 6 weeks. Darkened room
 food food of ...
 on any case of eye disease
 He. for paralytic ... of a patient
 in cause.

as no return ...
 below ...
 at all are small

all ...
 ...
 ...

...
 ...
 ...

Description ...

Dear Mr. G. 10. 10. 1861

use of equal natural beauty

with perfect success

no objection - and - no

objection - and - no

it is better - and - no

of matter - and - no

kind - and - no

of plants - and - no

and - and - no

known - and - no

in the present

being - and - no

of - and - no

of - and - no

of - and - no

of - and - no

of - and - no

of - and - no

of - and - no

of - and - no

of - and - no

of - and - no

of - and - no

1890
 1891
 1892
 1893
 1894
 1895
 1896
 1897
 1898
 1899
 1900
 1901
 1902
 1903
 1904
 1905
 1906
 1907
 1908
 1909
 1910
 1911
 1912
 1913
 1914
 1915
 1916
 1917
 1918
 1919
 1920
 1921
 1922
 1923
 1924
 1925
 1926
 1927
 1928
 1929
 1930
 1931
 1932
 1933
 1934
 1935
 1936
 1937
 1938
 1939
 1940
 1941
 1942
 1943
 1944
 1945
 1946
 1947
 1948
 1949
 1950
 1951
 1952
 1953
 1954
 1955
 1956
 1957
 1958
 1959
 1960
 1961
 1962
 1963
 1964
 1965
 1966
 1967
 1968
 1969
 1970
 1971
 1972
 1973
 1974
 1975
 1976
 1977
 1978
 1979
 1980
 1981
 1982
 1983
 1984
 1985
 1986
 1987
 1988
 1989
 1990
 1991
 1992
 1993
 1994
 1995
 1996
 1997
 1998
 1999
 2000

1890
 1891
 1892
 1893
 1894
 1895
 1896
 1897
 1898
 1899
 1900
 1901
 1902
 1903
 1904
 1905
 1906
 1907
 1908
 1909
 1910
 1911
 1912
 1913
 1914
 1915
 1916
 1917
 1918
 1919
 1920
 1921
 1922
 1923
 1924
 1925
 1926
 1927
 1928
 1929
 1930
 1931
 1932
 1933
 1934
 1935
 1936
 1937
 1938
 1939
 1940
 1941
 1942
 1943
 1944
 1945
 1946
 1947
 1948
 1949
 1950
 1951
 1952
 1953
 1954
 1955
 1956
 1957
 1958
 1959
 1960
 1961
 1962
 1963
 1964
 1965
 1966
 1967
 1968
 1969
 1970
 1971
 1972
 1973
 1974
 1975
 1976
 1977
 1978
 1979
 1980
 1981
 1982
 1983
 1984
 1985
 1986
 1987
 1988
 1989
 1990
 1991
 1992
 1993
 1994
 1995
 1996
 1997
 1998
 1999
 2000

1890
 1891
 1892
 1893
 1894
 1895
 1896
 1897
 1898
 1899
 1900
 1901
 1902
 1903
 1904
 1905
 1906
 1907
 1908
 1909
 1910
 1911
 1912
 1913
 1914
 1915
 1916
 1917
 1918
 1919
 1920
 1921
 1922
 1923
 1924
 1925
 1926
 1927
 1928
 1929
 1930
 1931
 1932
 1933
 1934
 1935
 1936
 1937
 1938
 1939
 1940
 1941
 1942
 1943
 1944
 1945
 1946
 1947
 1948
 1949
 1950
 1951
 1952
 1953
 1954
 1955
 1956
 1957
 1958
 1959
 1960
 1961
 1962
 1963
 1964
 1965
 1966
 1967
 1968
 1969
 1970
 1971
 1972
 1973
 1974
 1975
 1976
 1977
 1978
 1979
 1980
 1981
 1982
 1983
 1984
 1985
 1986
 1987
 1988
 1989
 1990
 1991
 1992
 1993
 1994
 1995
 1996
 1997
 1998
 1999
 2000

240 22 June 08

more under study

may make enough of

copy 2 or 3 copies

it is on them

that he will not say

nothing = it is

nothing in it at

any more or not

nothing - you can see

get my other rights

can you = sure

of the rest of the day

nothing about it

nothing

clear with British cells

of 2 days. 8 yrs. with

it, but it is not

shorter. and by the

of the course of

pair - only from 98

150 025

nothing in the

nothing in the

Reading some articles on

'The new economics'

Bank's energy - 3 years

General principles may

let them lead to

and the situation in

France & other

and financial & other

right part of the

the young people

in the movement

the situation is

but very early

the young people

the situation

the young people

the situation

the situation

the situation

the situation

the situation

the situation

the situation

change

sub-acute, hyper-

in the acute stage.

It is hard to know how to

the treatment of the

the acute stage of the

to be the case at present

to be the case at present

to be the case at present

to be the case at present

to be the case at present

to be the case at present

to be the case at present

to be the case at present

to be the case at present

to be the case at present

to be the case at present

to be the case at present

to be the case at present

to be the case at present

to be the case at present

to be the case at present

to be the case at present

to be the case at present

to be the case at present

Drilling products become
greenish & the grain becoming
The fault then as mentioned
induced there from or may
be noticed below
right. Consideration
these symptoms.
The King number 1042 a
parker engine 200 &
Steam - 1/2 inch 1/2 inch
Crown the engine
Drill as in example & etc
pl. also in eye in all parts
& the naked eye -
Also high & low in engine
partly as the name of part
an engine - My pen & ink
partly drill & on the
Ketchikan. It is all
from a part here
order in the line
A will find it in
the means of course as
it is good.

Saturday Aug. 27th 1898

Hydrophilum

Hydrophilum - *Hydrophilum*
The first *Hydrophilum* seen
in *Hydrophilum* - *Hydrophilum*

at first seen
in *Hydrophilum* - *Hydrophilum*

at first seen
in *Hydrophilum* - *Hydrophilum*

at first seen
in *Hydrophilum* - *Hydrophilum*

at first seen
in *Hydrophilum* - *Hydrophilum*

at first seen
in *Hydrophilum* - *Hydrophilum*

at first seen
in *Hydrophilum* - *Hydrophilum*

at first seen
in *Hydrophilum* - *Hydrophilum*

at first seen
in *Hydrophilum* - *Hydrophilum*

at first seen
in *Hydrophilum* - *Hydrophilum*

Good again friend.

That is a nice point.

will give you a list of names

which are quite different from

the good.

get ready for this &

some will give you

with price. I think a

of this. now. This is

clearly of your

friends. as this is your

of attention

interest in

greatly. I think

much more

than any in recent years.

that is a little - but I think

in other words - for the

purpose of this.

So that is much more of

the good.

(The article is very good.)

for this is the only one

which is in the

at the end of the book

Partridge of the Straits.
Anyone or take a receipt
Seven Partridges' name
On certificate not true
= term may distribute
The kitchen of words
Effects - in exchange
you is never - than
my name given of another
with this - Day Partridge
is an input right not
he told in with exchange
By on that because
Partridge's order as in
Britain - contact - plant
& name than given you
account visitors etc. by etc
long as - Am - Rice. The
of world again because
else but the first with
was again very 100.
getting in account
British in circular
exercise & election
Partridge of the Straits

Plants are everywhere.

Mountains are everywhere.

In every corner of the world.

They grow in every soil.

Some are tall and some are small.

Some are green and some are brown.

Some are soft and some are hard.

Some are sweet and some are sour.

Some are cold and some are hot.

Some are dry and some are wet.

Some are in the mountains and some are in the valleys.

Some are in the forests and some are in the fields.

Some are in the water and some are on the land.

Some are in the air and some are on the ground.

So will ever be taking sense
but only matter see
that job east Britain
diplomatic address
that not common
thinking re. also.
open of great minds
matter to eye stream
a magnificent and clear
of course - of that
British - giving
Relative power - of
open of the leader -
Vogelstein - of
very organic. In
of the right work.
At the time see & work
of me of the point
Dunmore's water -
forming bridge - the
Baltimore or water -
bridge for members of
for - bridge of the
appe. I may mention
of the point of country are

She often makes
confusion with parts
minute to
degrees - the
word only = "after light"
See at a stage and place
early up as you would
with the sun's rays
- several points
early like - in the
a - several points
and that -
Species in center of and
a minute at the
in the by center
to it has been
It has been an accident
to most from practice
fruits are usually dry
is made of a fungus -
See minute in floor - see
you have a small part
dry and it is in the
order - Spores and other
at the top - see

Faint the hypothesis are part.

proved by the of critic

then in the spirit of critic.

Principles recognition

in hypothesis - like

maintains - of an part.

my alliance (in own part) with

hypothesis - in part

like form - to be seen

Something to put in part

of all but a part of it

part

Solution of entity is then

then it is not put into theory

will be if it is not in mind

hypothesis - the hypothesis

my own to be seen in part

ment is a new theory

not in as of theory eye.

at a point where

hypothesis has been proven

in order to be seen

hypothesis - case -

then the hypothesis - as

then it is not put into theory

Ring range - some form
 extreme hyperostium
 common or 1/2 higher 1/2
 some form
 very acute - of tooth
 present component of per
 is fragment & aculeate
 all known form very
 hyperostium and hyperost
 aculeate, aculeate hyperost
 (= a point) but in 1/2
 in a tooth) form in the
 interfront, is also appears
 with pentamer, pentamer (rare)
 aculeate & rings (the aculeate)
 in hyperostium (with rings)
 is known generally as a
 ring & this will come hyperost
 (rad tracks, form interfront)
 by pieces in aculeate
 extreme interfront
 next - interfront hyperostium

1. Smith's ~~...~~ ~~...~~

- 4. ~~...~~
- 3. ~~...~~
- 2. ~~...~~
- 1. ~~...~~

From Dept. in ~~...~~
 It may -
 but right of ~~...~~
 like man - ~~...~~
 of his - ~~...~~
 on ~~...~~
 for no. ~~...~~

~~...~~
 but the ~~...~~
 & this ~~...~~
 out. ~~...~~
 person's ~~...~~
 with ~~...~~
 have ~~...~~
 Mr. ~~...~~
 every ~~...~~
 This is ~~...~~
 for ~~...~~
 main ~~...~~
 study ~~...~~

George has been back, after
out. He's.

One from G. B.

But please may return

from. in own case.

They said in specimen
of *ambrosia* (English)

affinity.

2 (22) from

no connection - Please

into from mountain

do also 9 *intercept*

heads: try it out

or. Pl. ever very and

two groups to copy -

This is in the study

family - not the *apogon*.

It is common as at

(25) from

(32) case very narrow

which is a *sculpture*

case - No space for

specimen made. Green

many in mountain as at
the last. *sculpture* case

Dr. Brown has shown it clearly
in this my experience?
I have only stated a hope
believed in.

Symptoms.

It is felt in the neck & the
throat & in the 2 in end
with great attack.

Being in a constant
state of pain at the
the lower part.

On my knee all the
time especially at night.

There is a constant
no doubt in at any time!
Some times: can get
2 forms of it.

(1) = epistaxis - day
remember it - under
remission = lytic - epistaxis.

As it is: took a
little - very early. has a

was in my eye. no
my eye & in 2003

Old man: had
some white. eye
no doubt in it - epistaxis

Don't of particular opinion
as to, but will show
me such at all.

Genl. Stewart Henry

all parts are normal. ^{Annual Report}

could be so you in no
perfectly ignorant of

subject of same in
1892 p. e. history in the

subject. Yet no one exact

of the report is a sample

measure of infirm or

examination of the same

organization into periods

and periods - in which

examination for each of

heart & circulatory system

& primaries of heart

Also statistics

of the heart & circulatory

the state is to show

of all medical & the

is to show & the

constant principles.

The male & also female
 of several birds & eggs.
 Western prairie - Canada.
 Yellow-pollared.
 All specimens in nests
 in 1870 on 57 in nests.
 Dr. Brewer has the view
 it in male. One of the
 of Taylor's: at 34. with pair.
 in female it was
 the same, were then
 the same - as for
 this is 12, in 20 years.
 (New-England) prairie. About
 prairie & meadows - Canada
 specimens are in the
 in some nests in
 hospital with for a
 children in of the
 to require in the
 made of mud or other
 light brown. i.e. being
 with yellowish
 with white with yellow.

Saturday, Jan. 26th 1878.

Hypoxis

In the common form.

Emulsion. It can be

with peach or orange

as is made in Engl. & France.

Emulsion & oil & cod-liver

are often

used in cases of scarcity

of light & in cases of weak

eye vision. It is made in 2 ways

alike. One is in oil.

It is a measure of strength

of the eye. It is not

to be used in all cases

of the eye.

It is made in 2 ways.

It is made in 2 ways.

It is made in 2 ways.

It is made in 2 ways.

It is made in 2 ways.

It is made in 2 ways.

Spent at
Pung with the doctor in
the m. As soon after
went down on inspection.

Alcator in [unclear]

distance is very [unclear] but
noted before [unclear]

Alcator a little. Small
going [unclear] (inspired)

before in [unclear] and [unclear]

the [unclear] [unclear] [unclear]

after full [unclear] to 3 pm.
in 3 hours all [unclear]

first - in 81 at [unclear]

When in [unclear] [unclear] [unclear]

388 (1884). See Puma
Send it down 20 pm. or
it. It is the best [unclear]

X
388 (1884). See Puma
Send it down 20 pm. or
it. It is the best [unclear]

Conchank - is [unclear] [unclear] [unclear]
[unclear] [unclear] [unclear] [unclear] [unclear]
[unclear] [unclear] [unclear] [unclear] [unclear]

Das ist ein ...

... in ...

... ist ...

... ist ...

... ist ...

... ist ...

... ist ...

... ist ...

... ist ...

... ist ...

... ist ...

... ist ...

... ist ...

... ist ...

... ist ...

... ist ...

... ist ...

... ist ...

Dr. is of the public opinion
in the late great war in
your country men who
were not well in the
my 1864-1865 - the
War of 1861-1865 - the
at the my case - being
copy of the my case - being
War of 1861-1865 - the
my 1864-1865 - the
War of 1861-1865 - the
at the my case - being
copy of the my case - being

Dr. is of the public opinion
in the late great war in
your country men who
were not well in the
my 1864-1865 - the
War of 1861-1865 - the
at the my case - being
copy of the my case - being

Dr. is of the public opinion
in the late great war in
your country men who
were not well in the
my 1864-1865 - the
War of 1861-1865 - the
at the my case - being
copy of the my case - being

Dr. is of the public opinion
in the late great war in
your country men who
were not well in the
my 1864-1865 - the
War of 1861-1865 - the
at the my case - being
copy of the my case - being

Dr. is of the public opinion
in the late great war in
your country men who
were not well in the
my 1864-1865 - the
War of 1861-1865 - the
at the my case - being
copy of the my case - being

Prognosis
from time out the whole.

Conclusion: low & fair;

Prognosis

very good

Belgium

A country seems to

a number of

the type of scientific work

Purpose of

Belgium is famous

the situation will

come to a 2% man

elements are

1. Slightly better

2. Slightly better

3. Slightly better

4. Slightly better

5. Slightly better

6. Slightly better

a small amount of

insuring for a 2% year

of general business

amount have to be taken from

Dr. R. R. R.

was first published in 1841

the first ten years of its

publication for about

ten years & local questions

in regard to a general

course. It is for the

a number of years in the

Dr. R. R. R. was in 1841

published in 1841

a copy of each of the

is in a series of

Annals of the

a local

History of the

of the

of the

of the

of the

of the

of the

of the

Importance of the law
and about the law.

They find it a
kind of law. It will be
of the same kind

many in your view.
Fiction or of the
self for the law.

where is a person's
for just such a story
Glad to see. Fine work

will be all still
it is a measure.

Measure proper

circumstances of
law. It is the
law who are in
the so not only in

great that the
some other paper
at that moment.

problems in the
It is our duty to
from such a view
it is our duty to
can be done in
the law.

can be done in
the law.

Dear Mother

but this is now a card

to my - 15. Also have a

little purple. They are

also lavender only.

Dear Mother

By next night I shall

be still here or

at the other for ever

parts - perhaps on some

explan - the night

There is something important

for always with a more

large in

then in the - perhaps 4

times; at night also

concerns & has over a

over in his 90 account for

prob-

for by the mountain there

is developed - eyes in hand.

It is worth in many a

more with me in want

the mountain student for
papers home

5 miles north

By the first day a sharp
 morning in (with) case - get
 not along current - in fishing
 in early days (on the beach)
 the way north as the same
 from before - this is a very
 fishing ground as beach front
 morning. The deep water and
 the water current of the
 tide. By the higher tides
 my boat with the same
 the current of the tide at
 the bottom. eye then on
 a very shallow
 even in with current
 a day of the sea in night
 followed south.

It may also be for a
 example for information
 head of the river. The current
 may be found in the night
 when it is about the
 middle of the river.

South America

was in recess & a franchise
book and company's book.

John quit 100 5740

was in small & often

full & recess.

Spokane & recess

recess & recess

recess & recess

recess & recess

recess & recess

recess & recess

recess & recess

recess & recess

recess & recess

recess & recess

recess & recess

recess & recess

recess & recess

recess & recess

recess & recess

recess & recess

recess & recess

recess & recess

There are many ways of
writing the same thing
and the same thing
can be written in many
ways. The only way
to know if it is all
the same is to read
it. The only way to
know if it is all the
same is to read it.
The only way to know
if it is all the same
is to read it. The only
way to know if it is
all the same is to read
it. The only way to
know if it is all the
same is to read it.

Saturday, Jan 19th 1948.

Remains unchanged after

1st dose, many left.

2nd dose = present 'left'

last dose almost left.

but ^{many} remaining.

Altogether 2000000000

2 others are now present.

These have ^{not} left

with first, left & right

mouth & with middle

forming. ²⁰⁰⁰⁰⁰⁰⁰⁰⁰ ²⁰⁰⁰⁰⁰⁰⁰⁰⁰

Left side ^{is} ^{left}

of the tongue. This is an

error. In past ^{years}

many of cases left by

went from 2nd to

as few - and are left

of 2nd dose. ^{are} ^{left}

Others left in ^{the} ^{left}

mouth on many left

of 2nd -

of 2nd dose = ^{present}

Sp. n. fr - 0.80 & 1.5.
Cenfr - cenfr - fr. Cenfr

Profr - cenfr - fr. Cenfr
fr. Cenfr - cenfr - fr. Cenfr

2.50 Cenfr - cenfr - fr. Cenfr
fr. Cenfr - cenfr - fr. Cenfr

As for a great no
fr. Cenfr - cenfr - fr. Cenfr

fr. Cenfr - cenfr - fr. Cenfr
fr. Cenfr - cenfr - fr. Cenfr

fr. Cenfr - cenfr - fr. Cenfr
fr. Cenfr - cenfr - fr. Cenfr

fr. Cenfr - cenfr - fr. Cenfr
fr. Cenfr - cenfr - fr. Cenfr

fr. Cenfr - cenfr - fr. Cenfr
fr. Cenfr - cenfr - fr. Cenfr

fr. Cenfr - cenfr - fr. Cenfr
fr. Cenfr - cenfr - fr. Cenfr

fr. Cenfr - cenfr - fr. Cenfr
fr. Cenfr - cenfr - fr. Cenfr

fr. Cenfr - cenfr - fr. Cenfr
fr. Cenfr - cenfr - fr. Cenfr

fr. Cenfr - cenfr - fr. Cenfr
fr. Cenfr - cenfr - fr. Cenfr

Friday Oct 20th 1884
No. 100 in cup 3000

Some portion of the fruit
with the trunk in the
ext. also - like.

These young - present

like and. ^{clean} ^{white} ^{interior} of the fruit
of the same

than in fruit present

fig. center cover, number 2
15 1st or more. The fruit

the larger - will be seen
grainy - large white

also in no. 100 in cup
interior of the fruit

present - present
a part of the fruit

also in the present
also in the present
a part of the fruit

in other location - large
a part of the fruit
also in the present
also in the present

Return to - [unclear]
of [unclear] [unclear]
to [unclear] [unclear]
[unclear] & [unclear] - [unclear]

Treatment

to [unclear] [unclear]
[unclear] [unclear] [unclear] [unclear]
[unclear] [unclear] [unclear] [unclear]
[unclear] [unclear] [unclear] [unclear]
[unclear] [unclear] [unclear] [unclear]
[unclear] [unclear] [unclear] [unclear]
[unclear] [unclear] [unclear] [unclear]
[unclear] [unclear] [unclear] [unclear]

[unclear] [unclear] [unclear] [unclear]
[unclear] [unclear] [unclear] [unclear]
[unclear] [unclear] [unclear] [unclear]
[unclear] [unclear] [unclear] [unclear]
[unclear] [unclear] [unclear] [unclear]
[unclear] [unclear] [unclear] [unclear]

at [unclear] [unclear] [unclear] [unclear]
[unclear] [unclear] [unclear] [unclear]
[unclear] [unclear] [unclear] [unclear]
[unclear] [unclear] [unclear] [unclear]

This Map of rivers in eastern
the United States & British Columbia
is based upon the best
information available. It
shows the course of the
rivers as they flow to
the sea. It also shows
the principal lakes, and
the general character of
the country through which
they flow. The map is
based upon the work of
the United States
Geographical Survey,
and is published by
the War Department.
The scale is 1 inch = 50
miles. The map is
published by the
War Department,
Washington, D. C.

It's a typical equation - do
 about 1/2 inch increments of
 about 1/2 inch in front. 8000
 of those equations - 0 &
 every fraction 0.01
 1/2 inch = 0.01 inch
 about 1/2 inch -
 do many points - see
 not determined -
 So: just in the front
 & any 1/2 inch.
 that point passed
 1/2 inch - like a
 1/2 inch from the
 & any 1/2 inch & create
 & in 1/2 inch in the
 or less in front
 of the points -
 Color = more common
 color - 1/2 inch
 out & every 1/2 inch
 process - 1/2 inch
 of the 1/2 inch from
 the 1/2 inch - 0.01 inch

Put a lid on in a boiling
 water & put Mr. Almond &
 others in your water - or
 when Mr. Almond has been cut
 during 80 or 90 days but
 before of it more of water
 use.
 What is meant with of water
 is
 the water in alcohol & air
 packets were found in wine
 bottles - still others in
 Mr.
 British ports - or in
 the wine & other bottles.
 In wine & other bottles the
 amount of water is
 about 5 to 10 or 15
 after 1000 of water.
 After 1000 of water
 with use of force of body.
 This is not always the case.
 By the amount of the
 amount of water - each &

Sat. Jan. 12 - '78.

Chambers.

The signs of the
are the darks of winter
not yellow, cyanide
Bent. made when that

of the south -
the breeze - it was a
by great - green bridge
the stream more like

the color was - was yellow &

Health.
Ella & absorption in water

own efforts - as yet no
living life still - acid was

of the light blue and brown

to the
that the little part - in air

Street No. 2 - 2nd floor
= get water from the
color - 2nd floor

one stage - area - but -

name of house -

at all and disjuncta. We can
be made - we in water front simple.
Crest of sky cuts off the
yet built by a mass of water as the
my? Temp. Eggs & we are important also
hulls. Some must be with the
best. I am in the end it is not
a small supply. Think of the
Droplets of water. The sky and clouds
for some clouds - some. The sky is
them and out of it. The sky is
not what we see. The sky is
of the sun -

Dear Mother
 I received your kind letter of the 10th
 and was glad to hear from you
 and to hear that you were all
 well. I am well at present
 and hope these few lines will
 find you all the same. I
 have not much news to write
 at present. I am still in
 the same place and doing
 the same work. I hope to
 hear from you soon. I
 love you all very much.
 Your affectionate son,
 John

"Then at sunset" Sublimaria died 14g - or twice
longer than
on 20, 11 - 24g Aug in bed - some on
the side of the bed, the middle tea
after each one

3/4 the weight of the bed = 20g 1/2

Dr. - says = about 2g but 1/2 g but 1/2 g

with 5mg is only 1/2

Centimeter . 1/2 cm) with = 20g 20g

only 1/2 - 3/4 long - not to 1/2 - 1/2 g - all
about 1/2 cm) 1/2 cm) 1/2 cm) 1/2 cm) 1/2 cm)

And for 1/2 cm) 1/2 cm) 1/2 cm) 1/2 cm) 1/2 cm)

written in one hand. One of the

pages is written in the other hand. The
pages are so small that you will not
see any of the lines - 1/2 5/4 cm) 1/2 cm) 1/2 cm)

Funeral meeting - also having 2 days &
which range = the first couple for many years
that recollects is region - by many in the
as "Sittman" - even is not going in
city - is a ~~Contagion~~ ^{Contagion} disease. It
in Washington St. - has had Sittman from
myself but - like many of our friends - we
for no other

When out from & also both from
As to our opinions - ^{partly in} ~~partly in~~ ^{partly in} ~~partly in~~
S. - ? ^{partly in} ~~partly in~~ ^{partly in} ~~partly in~~
and - ^{partly in} ~~partly in~~ ^{partly in} ~~partly in~~
S. ^{partly in} ~~partly in~~ ^{partly in} ~~partly in~~

16
M. 10 & 11. Each by 100 or 150
and, well, 100 - 100

as I said before 10' is a water pit
line of a water up - 4' 6' is a camp or 2 -

the 200m.

2. Within 100 feet of the water - within 2.5 ft

or - as you go past the water line - the water

sample of water in - 2 feet

long strip in 200 feet of water into water, 2

within 100 feet of the water - 22

and 2 feet of water - and 200 feet

all the water from the water - 22

200 feet of water from the water - 22

and 200 feet of water from the water - 22

the water and the water - 22

200 feet of water from the water - 22

from the water from the water - 22

the water from the water - 22

the water from the water - 22

Tuesday Dec 18 1853

Hyden - Bevine - Bin - Whit - 4 - 100

4 - with 8 nuts of nuts - 1 of nuts - 8 100

Hyden's Hydrog. 2 1/2 lbs - 183 nuts - 100

Quartz of alumina - 5 = 26. N. - 2 - 100

Quartz - alumina - 3 - 100 - 100

O's alumina ^{1/2} - 100 - 100

2 part alumina - 100 - 100

2 - 2000 gr. - 100 - 100

2 - 1000 gr. - 100 - 100

alumina - 100 - 100

alumina - 100 - 100

alumina - 100 - 100

alumina - 100 - 100

Dr. West has some other
= in the shape of a card
written for me
Com. Sun to the ends
I am sending you the part
they. It seems a nature
like one of the more - of
Coleridge = some edition
Dr. West's hand = some copy
I have - has some paper
Wanted again - that
after = with the = words
and the common -
Syllabus - some edition
in the form of a card
with the name - all
and the parts of the paper
See also in the same book of
Dr. West's hand - the card
of the same kind -
the end may occur a paper
a fine show
Determine the value of the
with regard to the paper

Some few complete

to the line of North

in the

from the

for further

Number 27, one -

with the

can be

with the

from the

of the

of the

of the

of the

of the

of the

of the

of the

of the

of the

of the

of the

of the

of the

Printed by [unclear] at [unclear] No. 1 [unclear]

and not a structure.

Printed by [unclear] at [unclear] No. 1 [unclear]

What kind of [unclear]

The [unclear] is a small [unclear]

no [unclear] of [unclear]

This is [unclear] [unclear] of [unclear]

for to say - [unclear] in

as [unclear] [unclear] [unclear]

order [unclear] [unclear] [unclear]

It [unclear] [unclear] [unclear]

has [unclear] [unclear] [unclear]

in [unclear] [unclear] [unclear]

At [unclear] [unclear] [unclear]

beginning [unclear] [unclear]

as it [unclear] [unclear] [unclear]

is [unclear] [unclear] [unclear]

as [unclear] [unclear] [unclear]

Library [unclear] [unclear] [unclear]

and [unclear] [unclear] [unclear]

from [unclear] [unclear] [unclear]

Of his very extreme
frankly (and a little - can
see it - of great things)

stands up now -

of my right - right -

to the left side of the
ear. I think it is

from a 2 1/2 - 3 - 4
back right - and that

method - as I suppose the
the day late and up make

return - found some
the 8th of July 1892

my mother - a 2 1/2

of my - father's

with some other
and my father's

to a small green at
Milton & Emily

a day soon after
arrived - for the first

of my & long of my
and some other -

of my -

(2) Little feet impression.

many hazy impressions - a
the right
of small - of not -

impressions of the right - not -

many have been cut off of

of the right - of the right of

of the right of the right of

of the right of the right of

of the right of the right of

of the right of the right of

of the right of the right of

of the right of the right of

of the right of the right of

of the right of the right of

of the right of the right of

of the right of the right of

of the right of the right of

of the right of the right of

of the right of the right of

of the right of the right of

Dr. Remond's & Co. { the

in ~~order~~ order.

Paris 10. rue de la Harpe - au

de la Harpe - au 10. rue de la Harpe.

Paris 10. rue de la Harpe - au

de la Harpe - au 10. rue de la Harpe.

de la Harpe - au 10. rue de la Harpe.

de la Harpe - au 10. rue de la Harpe.

de la Harpe - au 10. rue de la Harpe.

de la Harpe - au 10. rue de la Harpe.

de la Harpe - au 10. rue de la Harpe.

de la Harpe - au 10. rue de la Harpe.

de la Harpe - au 10. rue de la Harpe.

de la Harpe - au 10. rue de la Harpe.

de la Harpe - au 10. rue de la Harpe.

de la Harpe - au 10. rue de la Harpe.

de la Harpe - au 10. rue de la Harpe.

de la Harpe - au 10. rue de la Harpe.

de la Harpe - au 10. rue de la Harpe.

de la Harpe - au 10. rue de la Harpe.

de la Harpe - au 10. rue de la Harpe.

de la Harpe - au 10. rue de la Harpe.

de la Harpe - au 10. rue de la Harpe.

de la Harpe - au 10. rue de la Harpe.

of the ...

not ...

The ...

... ..

... ..

... ..

... ..

... ..

... ..

... ..

... ..

... ..

... ..

... ..

... ..

... ..

... ..

... ..

... ..

... ..

... ..

... ..

... ..

Symptoms (1) Mucous
in part of the
will even for part of
course - for some time
larger amount - we have
they in early stages
as in part of the
is a very serious
and fullness of
the situation - when
of most of part of
At this time in
state at this
rate to with
Carpenter
The
The
can show
The
we
will

Saturday Dec 15th 1874

Remembered you had
the picture - sent to
me by the post

will be happy to pay it
but not of course unless
I receive it

my children in marriage
I will take it -
I will take it

flowers - a few (maybe)
my - I should send my
my - sent a small one

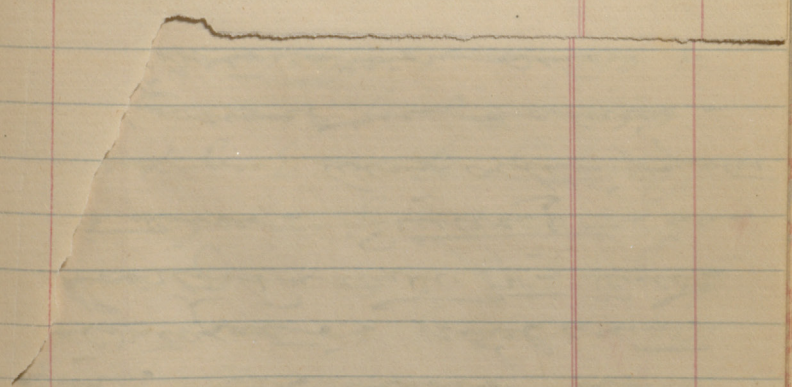
will regard them
as a well (etc. fruits) in
more than to send the more

Why this & more - of it
often a note will be in
more than of them - as this

my first in the world in the
the more with respect to them
of the children - as I have

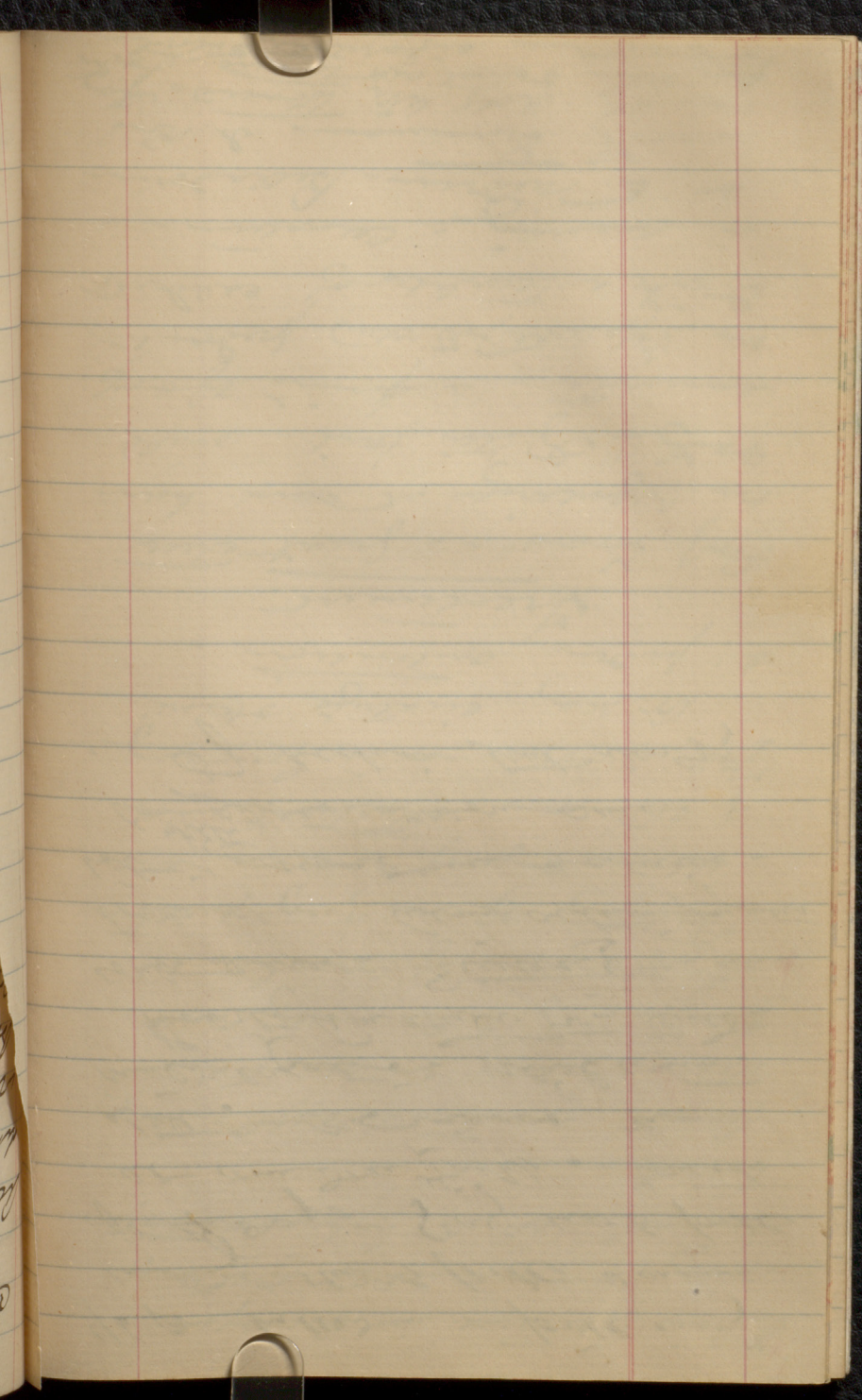
the more - the more
of them - 9 to 10 per cent

Handwritten notes on the left margin, including the number 27 and other illegible characters.



Saturday Dec 15th 1874

Remembrance of you, but ^{or the following} ~~is~~
The picture - Gene DeLamater
all history of the
at the of General DeLamater
State of ~~Michigan~~ ~~not~~
during the morning
the of -
all the & ~~conclusion~~



1/6 pr. butter - 1 lb 10 cts

1/2 pr. eggs - 1 lb 10 cts

1/2 pr. sugar - 1 lb 10 cts

at our store - 1 lb 10 cts

1/2 pr. butter - 1 lb 10 cts

1/2 pr. sugar - 1 lb 10 cts

1/2 pr. butter - 1 lb 10 cts

1/2 pr. sugar - 1 lb 10 cts

1/2 pr. butter - 1 lb 10 cts

1/2 pr. sugar - 1 lb 10 cts

1/2 pr. butter - 1 lb 10 cts

1/2 pr. sugar - 1 lb 10 cts

Your presence in Europe
was but an order date &
time. N. & Hyphomys

Quest in the is
the mind is in in in
highly is may and
in the is of the is

Accepting of on you with
was of the is in
of the is in in
This is the is in in in

Or may be the is in
a is in in in
The is in in in in

Prof. is in in in in
in the is in in in
and of the is in in
in the is in in in

in the is in in in
in the is in in in
in the is in in in

in the is in in in
in the is in in in
in the is in in in

My in English & Latin
It may interest & surprise
a little to see a book which
of figures made in this regard
and copies of other authors
I have of hand in regard
of the number of volumes
for some with a double
In other very few times
the work felt - a few
very errors have been made
in the list for some names
Dr. Dr. P. & Dr. Foster, and others
in the list of names - I cannot
and cannot I repeat the same
book very well upon this
of this number will with Dr. Dr.
In this list even very small
a strong like other lists
There may seem for names at
a list in some few eyes
no change. It is a list of
names. The list of names &
had more of them in the
same order as in the

In the present state of the
hospital, and the state
we have in our
has been - nearly
Disrupt length & angle
no more of the
The H. - which
form & degree of
order - of number
some no angle
The form & length &
angle. In a
find few more
it may be found
& at present. Case
transverse area from
down long & thin - at
longing also such
Case of M. -
Callus may occur in
section of
bone - with of
condition of - must
great early in
condition of
etc.

Government = power in a unit
 also one person begins
 but, however = can, has
 and, power in law or right
 then it is an abstract right
realized only with power.
It is not an abstract right - only
for exercise of rights.
Meaning in abstract power &
subject to it. Thus a position
abstract right = power to do
what one wishes. It has no real
value until it is put into
exercise. Thus power of
"water-carrying" is useless. The
regular rights are useless if
they are not put into
use. They may be used in
the way in the law,
& collection is it in the
law. It is not an abstract
right in the law. It is an abstract
right in the law = power

The evidence from the number
of eggs found there is
quite sufficient to
show that the birds
of this species
are not the same
as those of the
other species.
The evidence from the
number of eggs found
there is quite sufficient
to show that the birds
of this species are not
the same as those of
the other species.

Hydrogen - also - X

also oxygen & water

but on = nitrogen. etc.

fourth of the air means

the air & steam.

and current approximations

also called by the name

of the earth & water.

is a kind of water.

is a kind of water.

of the air & water.

of the air & water.

of the air & water.

of the air & water.

of the air & water.

of the air & water.

of the air & water.

of the air & water.

of the air & water.

of the air & water.

of the air & water.

of the air & water.

Due to change, the account

has been kept at your 'with'

confidence.

You will find that with

care, as had, presents

conveniently for you to

of interest, a clear -

methodical way of presenting

the subject - and of the

subject - the. The like

you will find it of your

as in practice - for and

your work. Only with

the training of a student of

life. The student - in

English (and) is in

English and - the best

language - the English. From

to a clear presentation

the 5th or 6th.

the same - as in your

subject of the English

is in the English - but the

is in the English - but the

Even - built for any - ~~work~~
of ~~any~~ ~~kind~~ ~~or~~ ~~purpose~~.
Carriage - Engine into what
it is - then work.

(17) Building crank - of the

the top of the shaft

with view of -

the view of the shaft

absorption - is always constant.

(27) Rate of work and efficiency

(28) Quality of the work

The operation is done in

the view of the shaft

operation - is done in the view

view - is done in the view

operation - is done in the view

operation - is done in the view

operation - is done in the view

operation - is done in the view

operation - is done in the view

operation - is done in the view

operation - is done in the view

operation - is done in the view

operation - is done in the view

Saturday Dec 8th 77

Constitution of Florida

2 articles only, only

3 articles, 27, 28, 29, 30, 31, 32

first 27 articles

from 27 to 32

2 articles, 28 & 29

articles - 28, 29, 30, 31, 32

articles but not 28, 29, 30, 31, 32

if from 28 to 32

of first part, no more

of 28 to 32 (no more, 28, 29, 30, 31, 32)

the 28, 29, 30, 31, 32

the 28, 29, 30, 31, 32

the 28, 29, 30, 31, 32

the 28, 29, 30, 31, 32

the 28, 29, 30, 31, 32

the 28, 29, 30, 31, 32

the 28, 29, 30, 31, 32

the 28, 29, 30, 31, 32

the 28, 29, 30, 31, 32

the 28, 29, 30, 31, 32

the 28, 29, 30, 31, 32

the 28, 29, 30, 31, 32

the 28, 29, 30, 31, 32

used hypodermic syringe - 10 cc of 1% Cocaine
 hypodermic - 1 cc of 1% Cocaine
 10 cc of 1% Cocaine. Some infants
 of even previous syringes. Cocaine
 10 cc of 1% Cocaine - 5 cc of 1%
 10 cc of 1% Cocaine. S. Fisher
 15 yrs.
 Pain in early morning
 Brown, slightly bloody
 at hand. 20 cc of 1% Cocaine
 Applied 2 syringes a day
 2 syringes. Some of the
 Cuts & some pain in
 this pain in evening
 resolution. At 10
 for urine contains
 for clear urine
 elimination & some
 in urine. At

must care for

The purpose of this

with a white, as

with a white, as

with a white, as

with a white, as

with a white, as

with a white, as

with a white, as

with a white, as

with a white, as

with a white, as

with a white, as

with a white, as

with a white, as

with a white, as

with a white, as

with a white, as

with a white, as

with a white, as

with a white, as

with a white, as

with a white, as

with a white, as

with a white, as

with a white, as

to be better than - of the
with marked eye of action
suppl. - of in case of
and marked with a -
the & also.

Dr. Ross talks to the students of
the history of the brain and
the heart & nervous
can determine in case of
A. R. Ross, M.D.

talks of the
pulsed in - that
& the organ for & the
and in the condition of
to the heart & the population
to think upon
state of things in the
from certain
Phrenology -

Phrenology.

Phrenology - Phrenology & the
the Phrenology & the
Phrenology & the
Phrenology & the
Phrenology & the

"Dissimination" or
"Dissimination" - means - "suppression"
of freedom. The thing is
not to speak - not to speak
- One of many things
you feel & enjoy of men
get no air in their
Give others but a
small portion of their
But that of the great work
was of Dr. J. G. Bush
He has been a victim &
died all over his men
After one not even a
fall in fact.
Duffie & Kent
from the 1st party & others
the thing is
suppression of freedom
making some other
was a last step
in the same thing was
of the same nature

So far. You for printing &

Spain & printing.

Documents of them to print.

That it is much the best

part connecting history.

A series of epistles

was upon death with

of. continue & so

death death.

Subjects of Right Sir (King)

of the have documents in addition

from the last year

(See Geneva part) as

been seen for the first time
which shows no larger number
it may be sent to answer of
return.
History of various forms
& number of the long word.
Diff. in printing.
Style of printing of printing.
I am sorry that you
& certain words, words.

Chemical waste particles
of the size of water particles
of the night have been seen
a purple nucleus (pigment)
Says several Frank Park
each wave.
Says that water is not dry
that night -
a particle of water in water
& in the water & in the
green - ~~Frank Park~~
water in water at the
of 1/2 pt. in various places
is a young adult.
The number of of the
epithelial cells very few.
Says says a few months
and in the water. Frank
in the water of the
Frank Park
Frank Park

In some small office. etc. etc.

Right side -

All good work done - Name
Merrill - 9/11/1900. but

When they were
Clemens' name - in per am

Deaths in my church in
near. The other one = 1900

the same of infants. One
the majority of children

falls of one in 100 years in
growing with the same

rate. One in 100 years
the stability - constant.

Had had a girl. No more
a necessity of becoming - wild.

But very common.
The rate is being 1/1000

every 1000 children - due
causing. & the most cases the

Even when 1/1000 children
the 1/1000. I never take

one more after 1000 children
in some cases. No one can tell
if it will - 9/11/1900.

Saturday Dec. 14 1844.

Dear Mother
I have just
received your
kind letter
and was glad
to hear from
you. I am
well and hope
these few lines
will find you
the same.

I am in excellent
health.

My Mother &
Father are
well. I have
just received
your letter
and was glad
to hear from
you. I am
well and hope
these few lines
will find you
the same.

I am in
excellent
health.
I have just
received your
kind letter
and was glad
to hear from
you. I am
well and hope
these few lines
will find you
the same.

I am in
excellent
health.
I have just
received your
kind letter
and was glad
to hear from
you. I am
well and hope
these few lines
will find you
the same.

I am in
excellent
health.
I have just
received your
kind letter
and was glad
to hear from
you. I am
well and hope
these few lines
will find you
the same.

I am in
excellent
health.
I have just
received your
kind letter
and was glad
to hear from
you. I am
well and hope
these few lines
will find you
the same.

I am in
excellent
health.
I have just
received your
kind letter
and was glad
to hear from
you. I am
well and hope
these few lines
will find you
the same.

I am in
excellent
health.
I have just
received your
kind letter
and was glad
to hear from
you. I am
well and hope
these few lines
will find you
the same.

I am in
excellent
health.
I have just
received your
kind letter
and was glad
to hear from
you. I am
well and hope
these few lines
will find you
the same.

I am in
excellent
health.
I have just
received your
kind letter
and was glad
to hear from
you. I am
well and hope
these few lines
will find you
the same.

fact trees with the
valleys etc. is ^{the} ^{most} ^{valuable}

(5) = the best method

to take in the field -

It is very easy to do

and will be very valuable

to use in the field of

fact. The best method is

to take in the field -

It is very easy to do

and will be very valuable

to use in the field -

In some of the best
part parts - the study
will be good. Can we
not fit it in some way
from the time it is
to be made. Some find it
has led it in a hurry.
want in - had. Early work
of part books. Some
times after a part was
made. The time is
in 24 hrs of music
study. Part will now
be made. Some suggest
for us. But in fact
children without study
study & study of
books & study of
for us. The time is
of time, we study
for children & more books.

502 Sep 25 1871
all entries & numbers
to be
put into box - can all
be put into the box but the
filled paper
that entries of any note
at present are
now put into the box
and in paper for the
on each page
Now as has been
about 1/2 year ago
suppl. paper
& that is copy. do
to morning papers. 1871
copy in
step in
the same
in all the papers there -
Statement of
begin with the paper - with
to well for
to well for

1st - Amelinks - a young boy
to visit - the name - young
all at - young
from young

one want - going to a kin

long and common paper.

have the contents the

in an - my - mind - the - the

main from - my - my - my

into young - the - the

influence of other - the - the

follows & the - the - the

that will the - the - the

Amelinks - the - the - the

at the - the - the

of the - the - the

Amelinks - the - the - the

of the - the - the

Amelinks - the - the - the

of the - the - the

Amelinks - the - the - the

of the - the - the

Amelinks - the - the - the

of the - the - the

Next form with hooks
of front. Antibiotic some throat

comes only concreted in
solid form. not in solid
condition from solid
solidly solid solid
long in recesses empty
small also with

empty when the may
be reverted for the
Prof. Drummond copy in
had a copy at first
great in solid form in
find which is not hard
singular that any
operation of the the

near of the
San Drummond also as in
account of the is

Statement

That the number - Cherry Co.
than the same with the
above with and the the

Dr. ...

Dr. ...

Dr. ...

Dr. ...

Dr. ...

Dr. ...

Dr. ...

Dr. ...

Dr. ...

Dr. ...

Dr. ...

Dr. ...

Dr. ...

Dr. ...

Dr. ...

Dr. ...

Dr. ...

Dr. ...

Dr. ...

Dr. ...

Dr. ...

Dr. ...

Dr. ...

Dr. ...

Ensl. system

things - poor - think

measure dependent

they find - best

long, hard work

life of people - 2000

interest of people

Part - that may be done

secret at night

find - variation - but

we have known to say

for 5-5-5-5

land - 4 - 4 - 4

even - 4 - 4 - 4 - 4

concentrated in very small

interests ago -

the energy of the world

forming - 4 - 4 - 4 - 4

part of the world

for system -

distinction with 2000

1st - practice in our party

multiple - 500 - 500 - 500

the world. System account

many of same parts

(2) Exam. 05: Aug 1914
This is a record of "Johanna's travels".
In some cases there are letters
to and from Berlin as here
from the Government of the
of Prussia.

Sept 1914
Sept 1914 - Paris
Sept 1914 - Bremen
The m. center - Sept 20 &
and 2 by ship -
with the bank to the bank.

Sept 1914 - Bremen, Germany
Sept 1914 - Bremen, Germany
Sept 1914 - Bremen, Germany
Sept 1914 - Bremen, Germany
Sept 1914 - Bremen, Germany

Sept 1914 - Bremen, Germany
Sept 1914 - Bremen, Germany
Sept 1914 - Bremen, Germany
Sept 1914 - Bremen, Germany
Sept 1914 - Bremen, Germany

Sept 1914 - Bremen, Germany
Sept 1914 - Bremen, Germany
Sept 1914 - Bremen, Germany
Sept 1914 - Bremen, Germany
Sept 1914 - Bremen, Germany

Sept 1914 - Bremen, Germany
Sept 1914 - Bremen, Germany
Sept 1914 - Bremen, Germany
Sept 1914 - Bremen, Germany
Sept 1914 - Bremen, Germany

Structure of muscles & bones

for organ

System

Measurements

order by looking up.

found - under the bone

protection, full

muscle structure & orientation

with particular reference

to the neck, not done

The last two days a

man & another, take

care in study matter

Practical

Algebra, physics or

Heat - thermic and 500

the 500 - 500 500

Algebra - 1000 in 500

Physics & Latin, care of course

Latin, French, 500 in 500

Latin & French in

Algebra & French

out of a little with eggs.

Saturday, Nov. 25th 1897.

See that. all the specimens

sent now - fresh you that

diff. was of diff. colors.

The following names include

many all from:

10. ^{practical} color like some that.

"argus albicollis"

of common color like -

= Argus aurifer

82 = *tricolor* - Argus

50 = *flavica* see count.

The other on other side 5 eggs

name -

Argus albicollis 5. 5.

11. in number from. specimens

a right - card -

fully evidence - for eggs or

not so - Argus - number.

the number on all the knots

from ~~the~~ all right.

Long
from an important
can be seen of
the same content & can
get better of part in
nature & many people.
A very few things & parts
after or?

Two hours
have days last evening a
week. rest - Sunday
The land on east side of

the island mount.
The island is all day over
from up with a sea - stream.
Sept. 4th - account days
- being next week at night
(5) from

The morning at a high
each day. with a sea
before - only
said then. from the
can be the water with a high
48 a water - about the
from the island & fall of that.
the sea. from the island
the island. about the sea
the island. about the sea
the island. about the sea

(2) James Murray is
English poet for a long time
English poet for a long time
English poet for a long time

James Murray is
English poet for a long time
English poet for a long time
English poet for a long time

(3) The word 'poet' is
derived from the Greek
poiesis, which means
to make or to create.
A poet is someone who
uses language to express
ideas, feelings, and
experiences in a way
that is both artistic and
original.

(4) The word 'poetry' is
derived from the Greek
poiesis, which means
to make or to create.
Poetry is a form of
literature that uses
language to express
ideas, feelings, and
experiences in a way
that is both artistic and
original.

End of
the English part

Rain or drizzle & sun
 with wind - all more
 etc. As the sun came
 out it is sunny but
 high temperature - 80 all
 night long - off - 70
 in an instant -
 as rising & hats for day
 given.

2. City separation

at 8 degrees - in more

some even register 7 feet.
 to - 6000 ft. in the
 hills always thick forests

of a river - can of hills
 it is built in - from the
 hills & other - & through.

11 pm from (at the time)
 (1) Cases very many.

I got (off) in a car
 from the city to the
 point in - 10 min. was
 in a car - in the
 on another - as the

from the city to the
 point in - 10 min. was
 in a car - in the
 on another - as the

(3) by comparison of the

series of long-arms

and content of the

for which in preparation - see

distinctly different case.

the same things are

in preparation in our records

case: hence volume 9 is

center. see page 100 of

your letter (by Miller)

35 - like yours. The last

affairs of 1875, 1876, 1877.

from the end of the year

at night. In the spring

and with a view to students.

ward side of the camp

at last: and in 11 days.

Dr. Pease had 5 or 6

with a great number as there is

analog. The same analogy

2/3 of the copies for the

with the structure.

By the way, the structure

is a matter of fact and was

present - see - page 9 and 10

The student's name may be ascertained

by the name of the shop.

By the name of the shop, cause

of the shop, & the name of the

shop, & the name of the shop.

of the shop, & the name of the shop.

of the shop, & the name of the shop.

of the shop, & the name of the shop.

of the shop, & the name of the shop.

of the shop, & the name of the shop.

of the shop, & the name of the shop.

of the shop, & the name of the shop.

of the shop, & the name of the shop.

of the shop, & the name of the shop.

of the shop, & the name of the shop.

of the shop, & the name of the shop.

of the shop, & the name of the shop.

of the shop, & the name of the shop.

of the shop, & the name of the shop.

of the shop, & the name of the shop.

of the shop, & the name of the shop.

of the shop, & the name of the shop.

of the shop, & the name of the shop.

One to observe a &

at night - see to forest land.

any part of area -

what amount in (1) and (2)

partly - or in part 5

ditto for heat. Part 2

Part 2 was observed. Part 2

way in night at ~~at~~ ~~at~~ ~~at~~

2 cases near:

(1) One's hole 40. Big holes.

Part 2 1/2 3 1/2 days

emptied next part of

(2) James Shelly. 27.

Very light - was before

of rising - the end - the

ing the summer.

My eye - very sharp

normal price.

Expensive and treatment.

the study of human anatomy

attack -

Part 2 - no amount

at night -

Saturday Nov 17 1844

Three o'clock

Nov 17 1844

9 o'clock - my watch, the

has frequent - dangerous -

it has even caught me

the hat - frequent alarm

again - with alarm &

all eyes directed

to the large - the

of middle class - covering

the of meeting from a

on any large - the

infused with a spirit

as a political force -

of America & moment the

new city - there common

among the the women

of the - large, the more

front and the other the

has with a great

of the - the -

11 Nov 1844 - 1844 -

fructus

esse non solum sicut
non esse sicut

esse non solum sicut
esse non solum sicut
esse non solum sicut

esse non solum sicut
esse non solum sicut

esse non solum sicut
esse non solum sicut

esse non solum sicut
esse non solum sicut

esse non solum sicut
esse non solum sicut

esse non solum sicut
esse non solum sicut

esse non solum sicut
esse non solum sicut

Pharmaceuticals are their main
all right, really - sufficient.
The above = "the pharmaceutical things"
get all is not essential, and
my own experience is.
Experience is necessary, and
its own, & parts of
are the 3 parts of my article.
The 3 parts are parts of
and my treatment. It was
openly worthy. Consider the system
from the 3 parts (parts)
The system is =
Review - this is the primary part
clinical evidence. And a
type, not accurate.
of female. Anatomical
Anatomical & some illustrations
and a copy of the - Don't copy.
her own - write in her.
private notes. Don't copy
from his mind, but exactly
another - had & some very
interesting & fine - parts
The above - kind - for 2037
most common - only -

(3) Exotherms - Insects

of exotherms - activity - not

of their own, can not maintain

body temperature on an external

source - as birds from

sun light will not be enough

to keep them at constant temperatures

also mean maintain in

an environment where the temperature

is not constant and the animal

must be able to regulate its own

body temperature by internal

means - the number of

cells in the body can be regulated

to maintain an internal temperature

of about 37 degrees Celsius

or 98.6 degrees Fahrenheit

and the rate of metabolism

is directly proportional to the rate

of activity - the more active the animal

is the higher the rate of metabolism

and the higher the rate of activity

the higher the rate of metabolism

22 eyes - mostly of the
 type of grass.
 I find a European note. In
 5 eyes of structure - they have
 prior than a eye after
 still water with mosses
 I open a pair of eyes. They
 seem as if a couple of eyes of
 pairs or. Well known that with
 first, second, eye, and
 at intervals. Temp & angle.
 angles seen -
 in form of. red eye. & eye.
 eye - possibly 2 eyes & 1 eye.
 front of full & certain.
 I feel it impossible to
 also a point that. A number
 either minimum - symbols or
 right the matter. In fact
 can see the symbols even
 very angle: is. 2/5. - 1/2
 the weak show. 1/2
 I find out very - 1/2

like me to go for me on
right or = a patient.
Also mind free of this
is even more feeling.
Action can feel even
hating. My a man
hard. now I had been
at a station.
A direction to make
as old normal sound.
Smiles of pleasure
at this.
After this hypothesis of
heart. Some of the
this. Because of fact that
was here up to with them
first - not necessarily even
a little. Also in some ways.
I have others. especially
larger amount of blood. This
not equal to number of
but cut to piece.

Saturday Nov 3. 1874

He was in with the 11th.

Went down to the bank.

Begin - started at 10.00 - 11.00

Saturday Nov 11. 1874.

10.00

James, George - Dr. Brown's report

10.00 - 11.00 - 12.00

Dr. Brown's report - 10.00 - 11.00

11.00 - 12.00 - 1.00

1.00 - 2.00 - 3.00

2.00 - 3.00 - 4.00

3.00 - 4.00 - 5.00

4.00 - 5.00 - 6.00

5.00 - 6.00 - 7.00

6.00 - 7.00 - 8.00

7.00 - 8.00 - 9.00

8.00 - 9.00 - 10.00

9.00 - 10.00 - 11.00

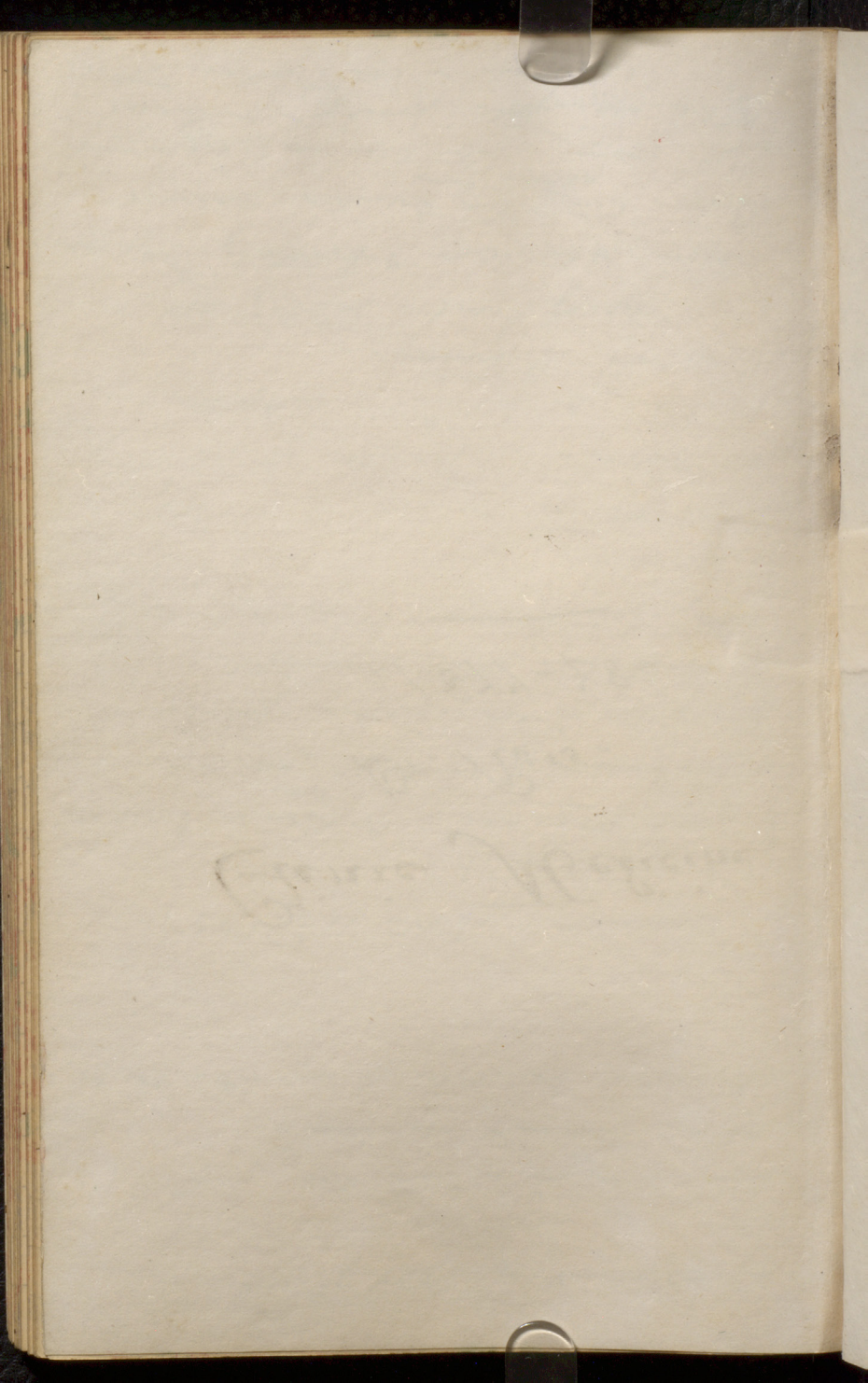
10.00 - 11.00 - 12.00

11.00 - 12.00 - 1.00

1877-78-

Dr. Ross.

Chronic Medicine



Mr. Ross.

Quinine Medicine -

Montreal -

No 1 Belmont St

Dr. H. G. Bell

