



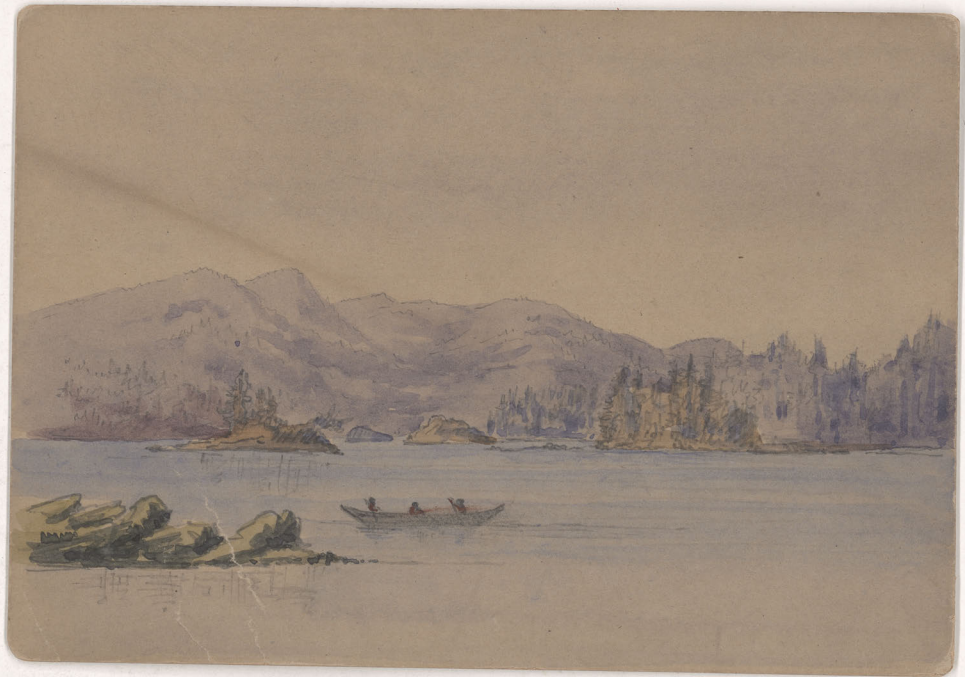
Channel between main land + —
at site of proposed bridge.

ACC. 2624

Channel between ^{Arrian Rapids}
mainland & Taldex I at ^{Bude Inlet}
site of proposed bridge. B.C.







KOPRINO HARBOUR / 85

In Koprino H₂,
23. Aug. 85 -

ACC. 2624



Hernando J.
B.C.
8. Jul. 85-





Look toward looking across
from Linnestad

Sept-13 1890.

Acc. 2624



Acc. 2624

McTennan's Brook
Picton Co. N.S.



El. track Eljot Lake Bld.,
1876

Acc. 2624



Looking down the Masaryk valley B.E. by George Percer Dawson
1876.

Acc. 2624





"Lake Louise"
Sept. 1909





Thunder Cape, Lake Superior, 1867

Cape Thunder, Lac Supérieur, 1867



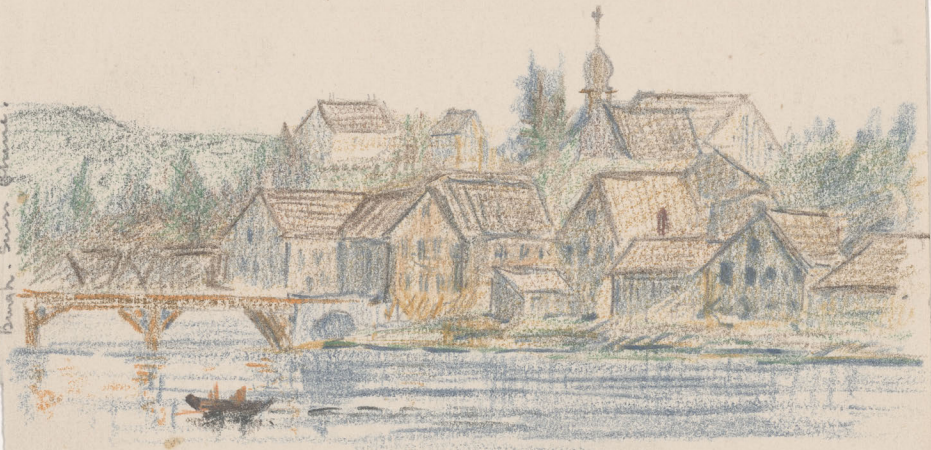
Missouri 19.5.61.

MISSOURI RIVER

Acc. 2624



Burg-Sauer-Brücke





Bloody Foreland. Irish Coast.

XI

Acc. 2624



X

Acc. 2624

E. River Looking up from New
Glasgow. Sept. 72.



"Lake Erie" the ship Dawson
Sailed to England in when going to
the School of Mines - This copied
for a picture Mr. Schaler Lewis has;
an uncle of his being Captain of the ship.



The Lake Erie 1868 - 1924
Capt. Robert Schaler



Stuart Lake from Ft St James
July 6, 1879

Shant Lake from Fort St James

1879



... CROP

IX

Please
978E
Mr. W. B. Dawson
McLeile College

Peace River
Peace River

$8 \frac{3}{4} \times 5 \frac{5}{8}$

same size

#26005

Acc. 2624





Newcastle, N.B.
Aug. 72

Acc. 2624

N. Coast Bay Chaleur
Aug. 72



Cape Mudge x 1/2
Inland Court B.C.

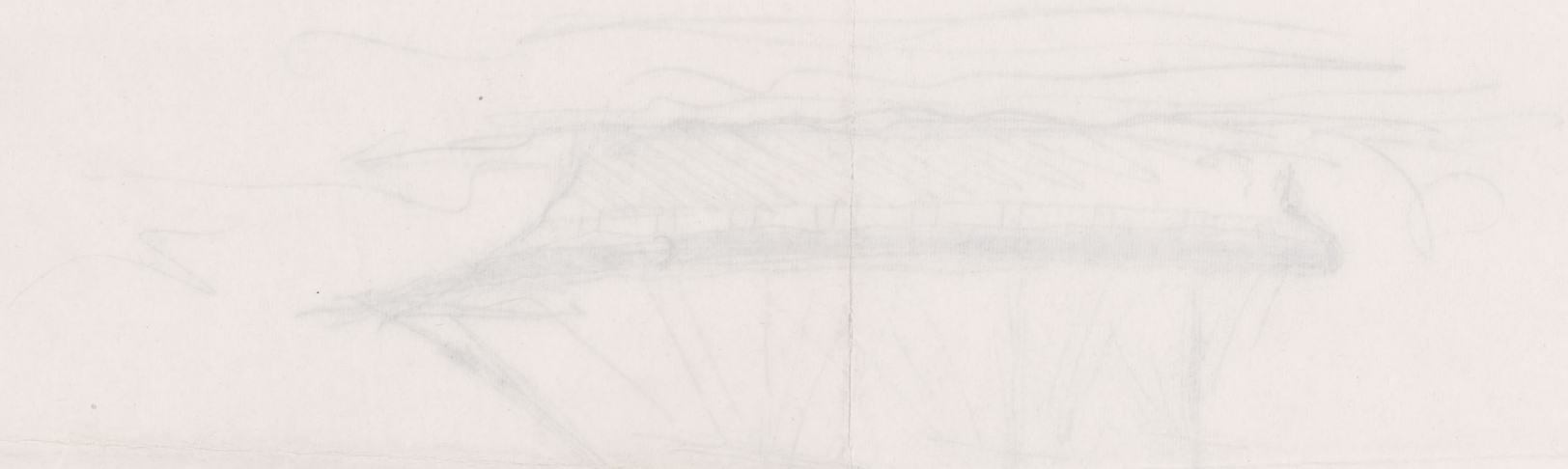
Acc. 2624

with the John Inlet - from
Sutcliffe Channel

Handwritten text, possibly bleed-through from the reverse side of the page, including the words "sails" and "masts".

20





56

A sketch of the ship "Lake Erie"
on which George went to England to
study at the School of Mines -

- 1) Picture painted in sepia of "Lake Erie ship"
by G. M. D.
- 2) Sketch by L. W. S. of ship in which
Dawson sailed to England.