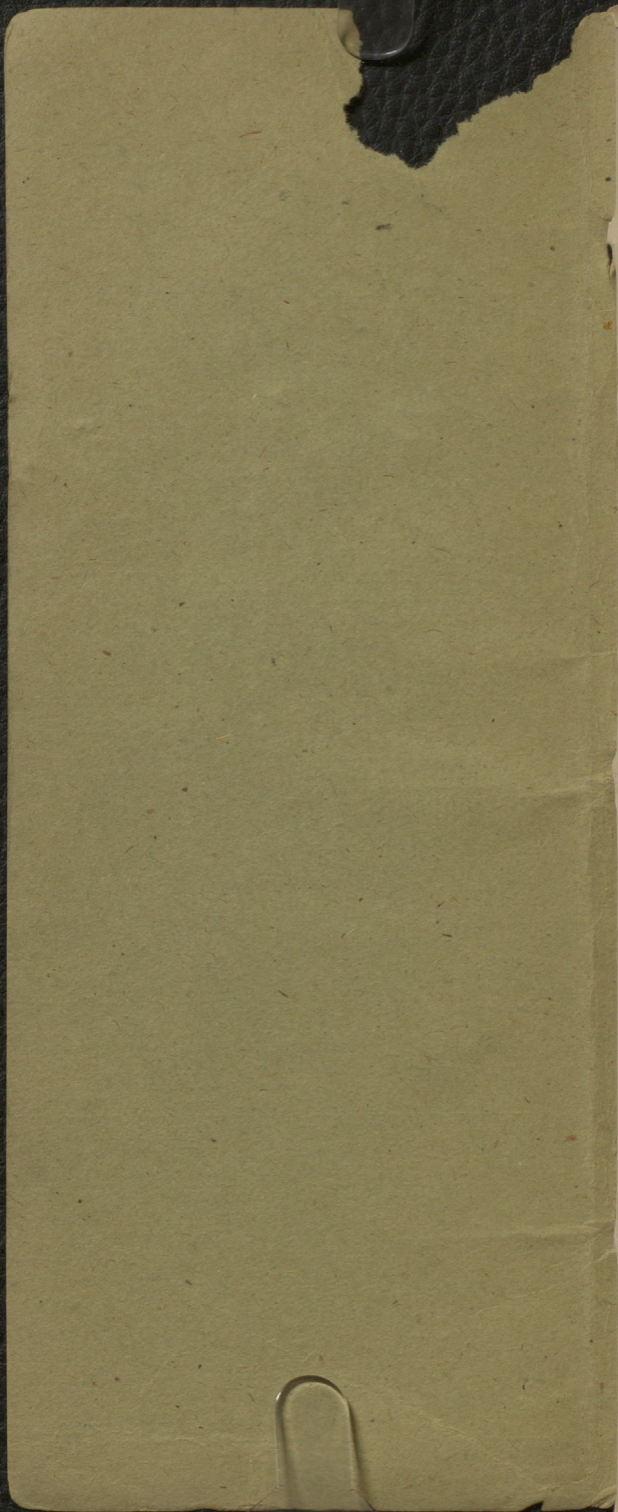


1  
August  
Greenville



Members al

Spring

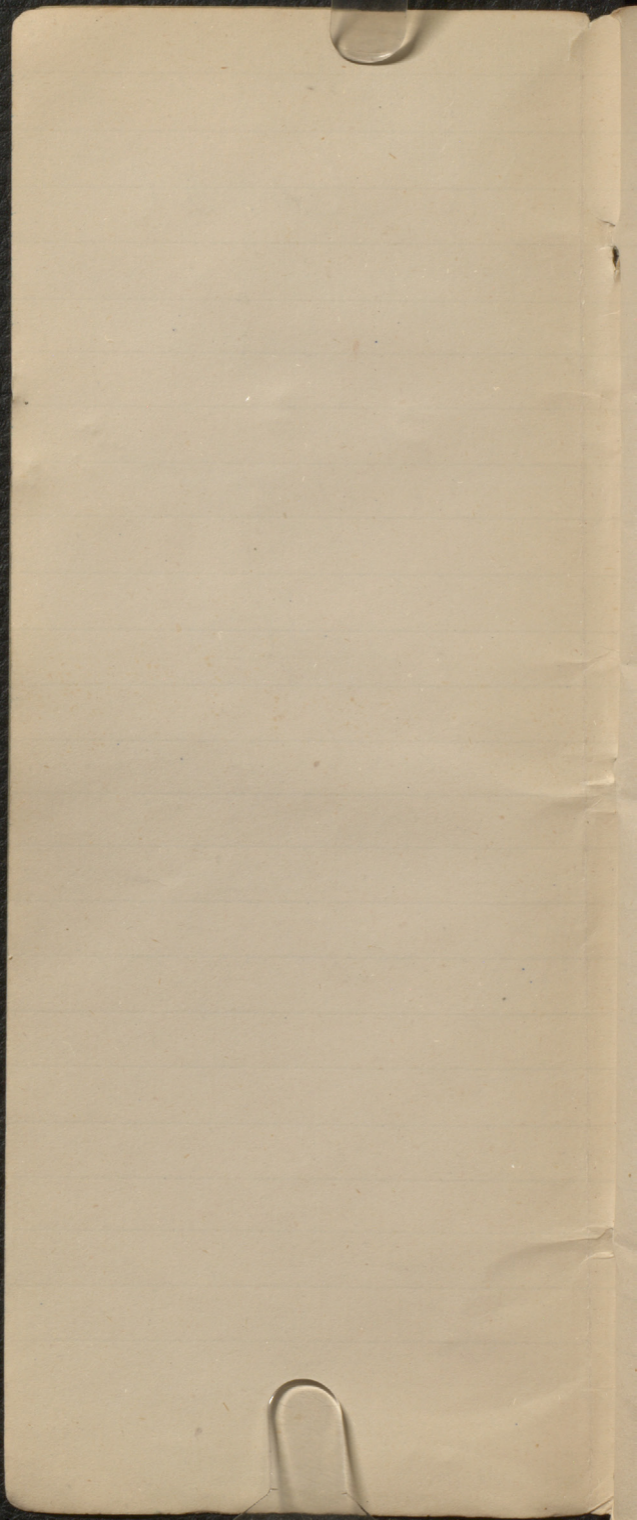
S 40° W

Factt

East sea

Ruling

S 70° W



Oct 7/82

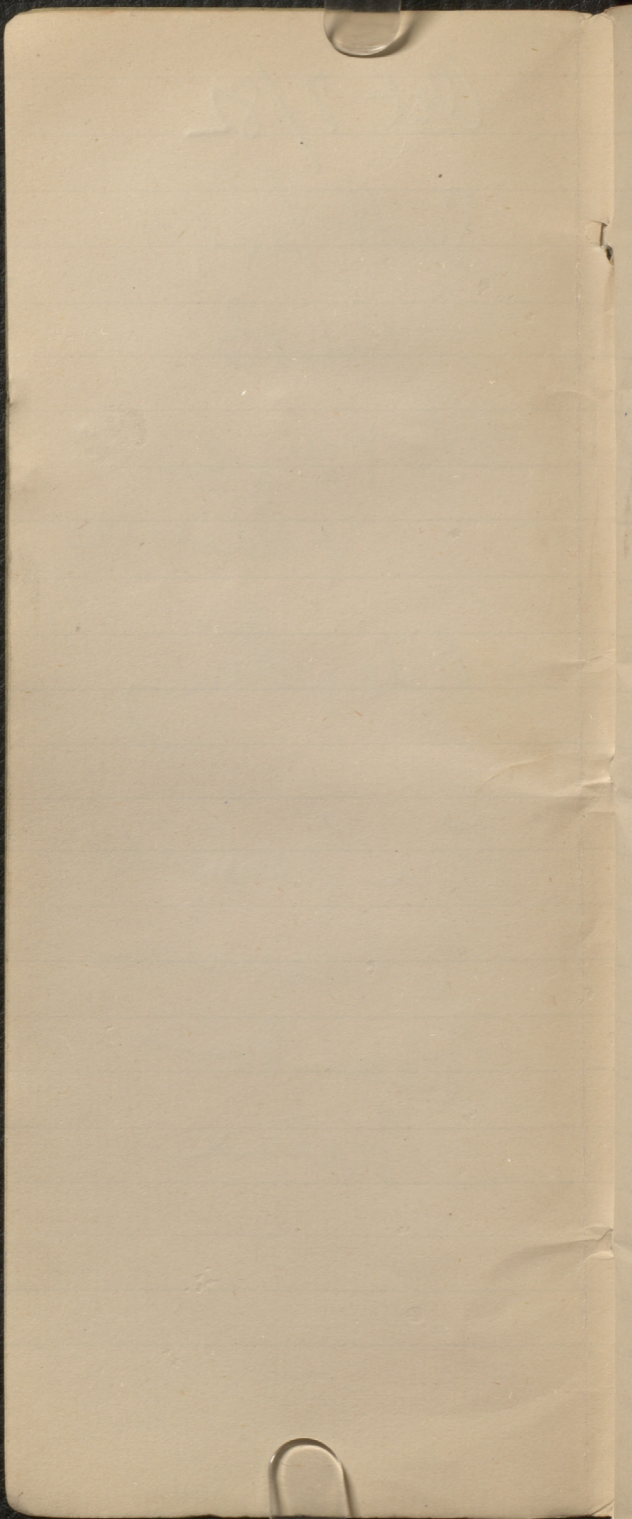
Smith Valley

Feb 13

6 range  
Grenville

Older Iron

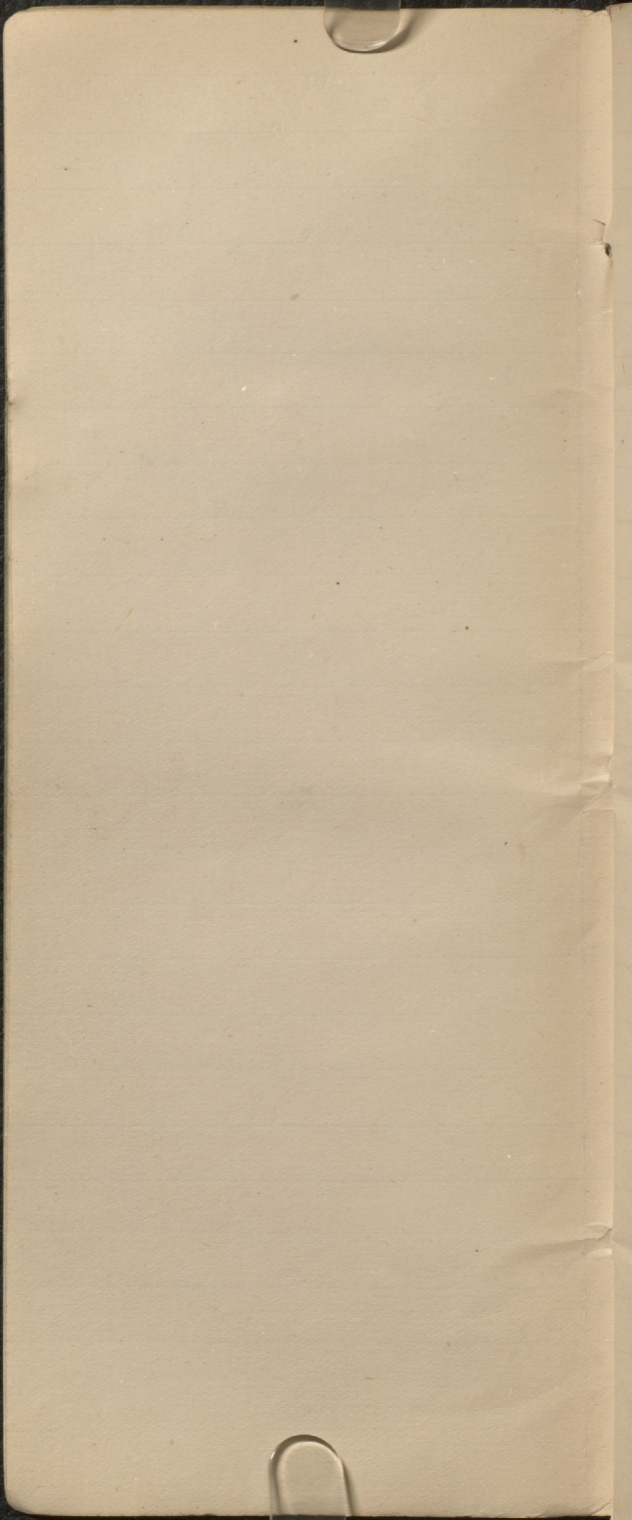
Iron Grenville  
to Cameron  
near Nixon  
mine



Calumet R

Summit Sub  
CMB

Jan 8200W





Over quarry  
Calumet R

Deep some  
near center

Strike S. 25 W

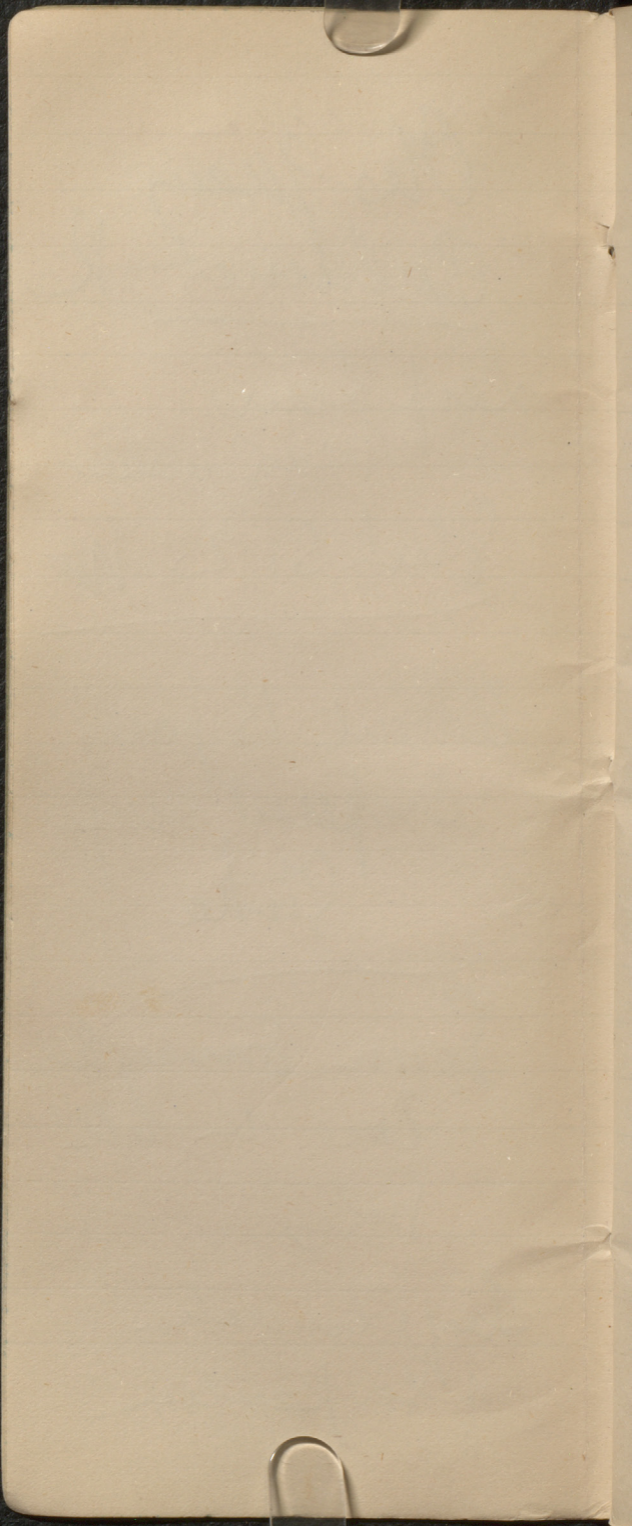
---

About 15 paces  
creeped camp  
Strike

---

From Smoother  
line on both  
sides

Large bunch  
of Serpentine

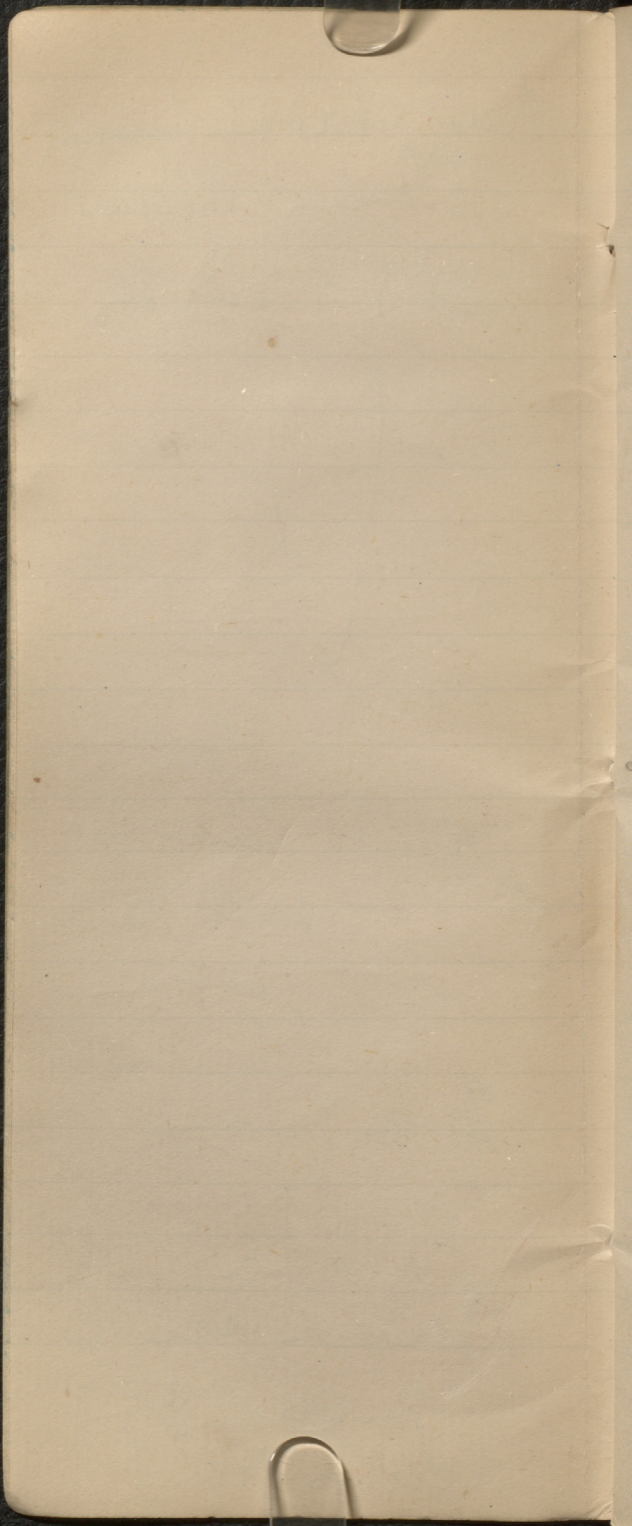


the course boundary  
shall be around  
the end of



Not  
Causally  
but true  
form

In the way  
of the  
severe  
must be  
perfect &  
determined

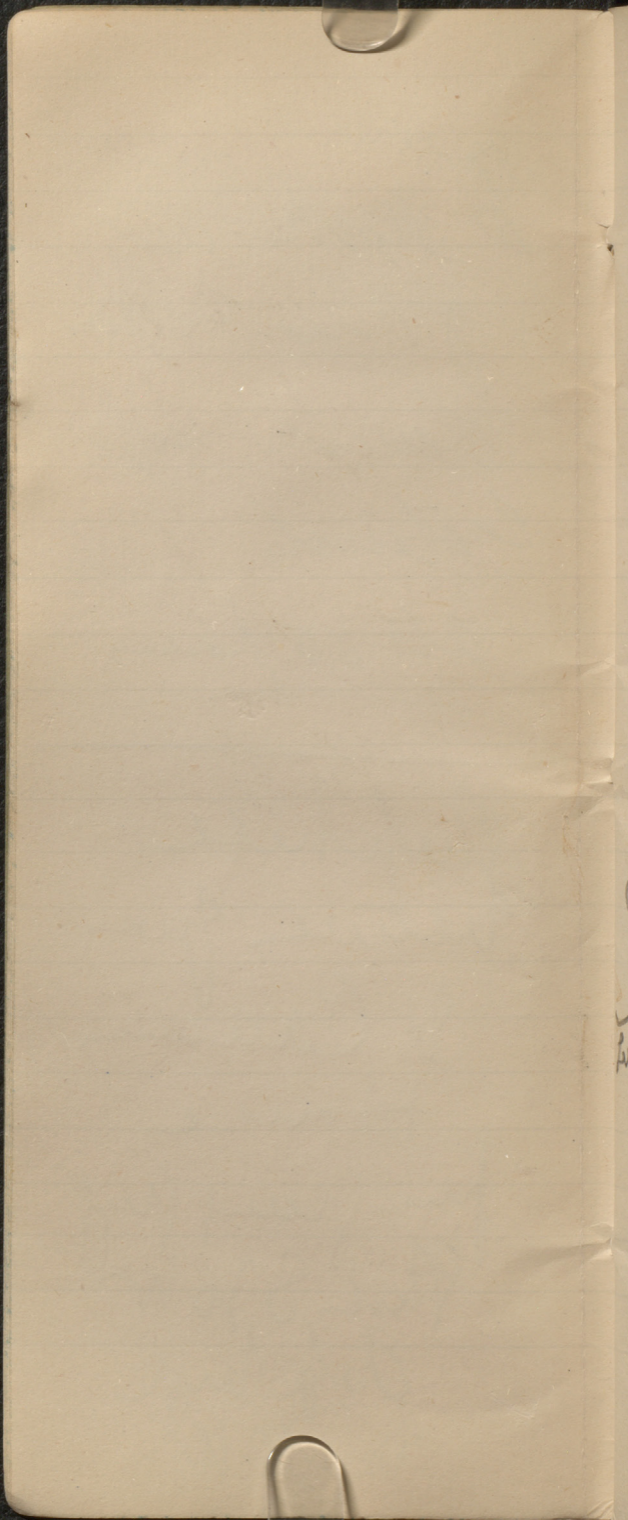


To North West  
of Otter Creek  
Lumber Mill  
Crested  
all 30 paces.

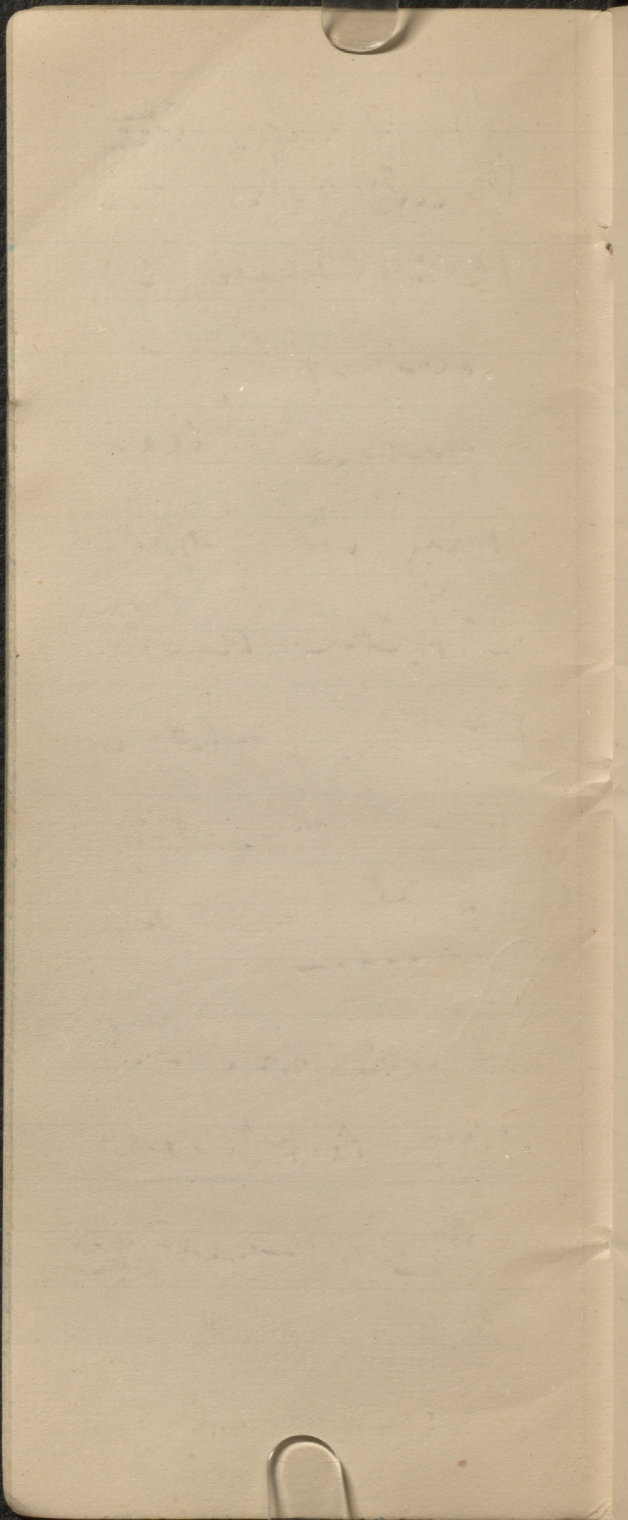
---

Chapel Hill  
between Gray  
& Cameron  
Hance

fine ground (red)  
Shel S 30 W  
dep. top  
to NW









At least the  
group above  
mentioned is  
very a  
that band  
very straight  
& flat on the  
under side of  
very under  
band of  
further below  
it, appears  
the white  
graphite  
various

It would seem  
that the American  
hand is coming  
uprightly and  
that the  
American  
people are  
about the  
Serpentine  
Limestone

---

? Does the  
American  
to the People  
of all times  
there the

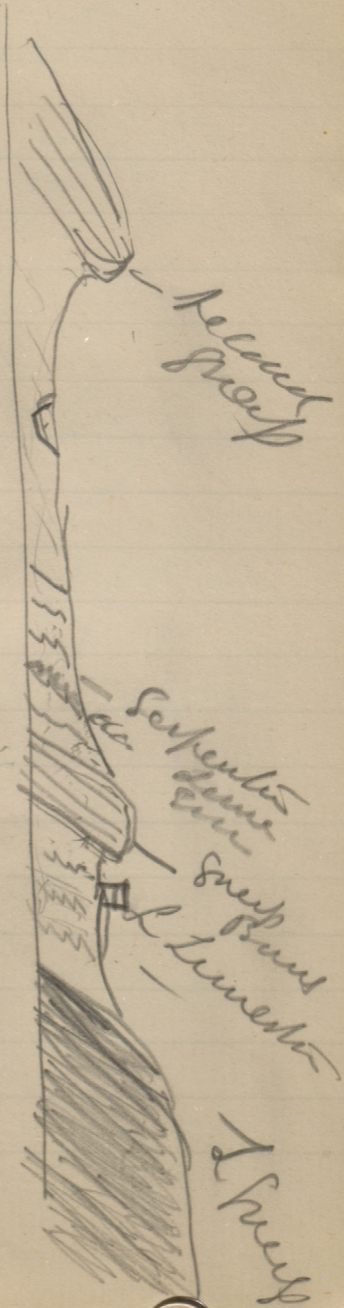
Summ. Brung. Fees  
Near the Cott.

---

In copy for Collins  
the word here  
the paper of  
gravelly hill  
fide on the  
map and  
set at re  
in case  
Cymru  
Sapthre  
Limestone

then pores belly  
of green and  
then - dead  
then comes  
the Serpentine  
Limestone

The rock  
at Carrara  
would be  
as an opposite  
page

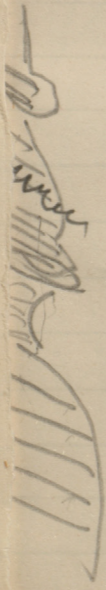


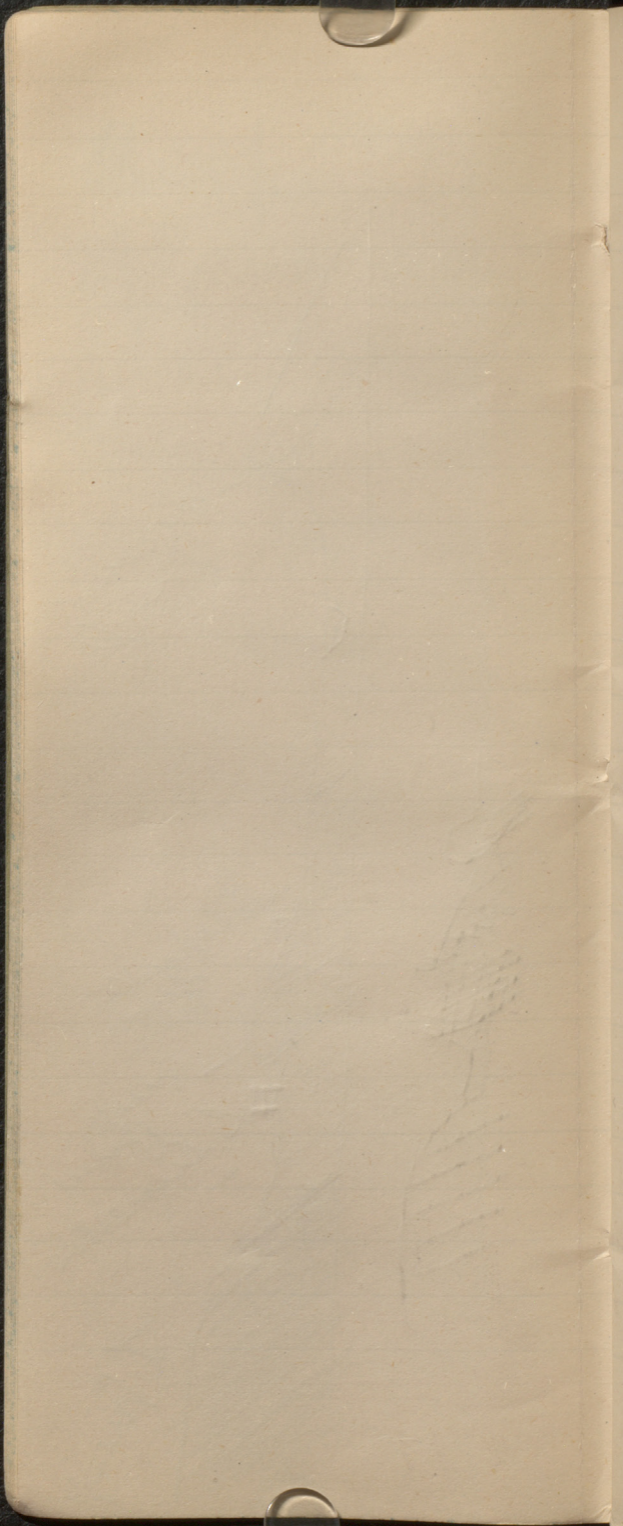
Recessed front

Serpentine

Sandstone

Limestone

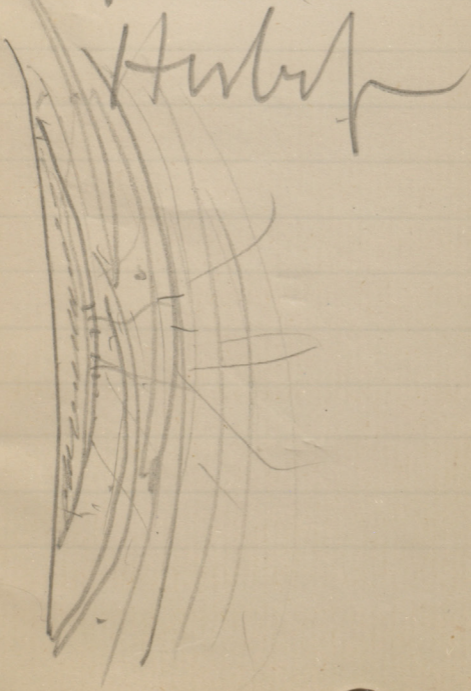


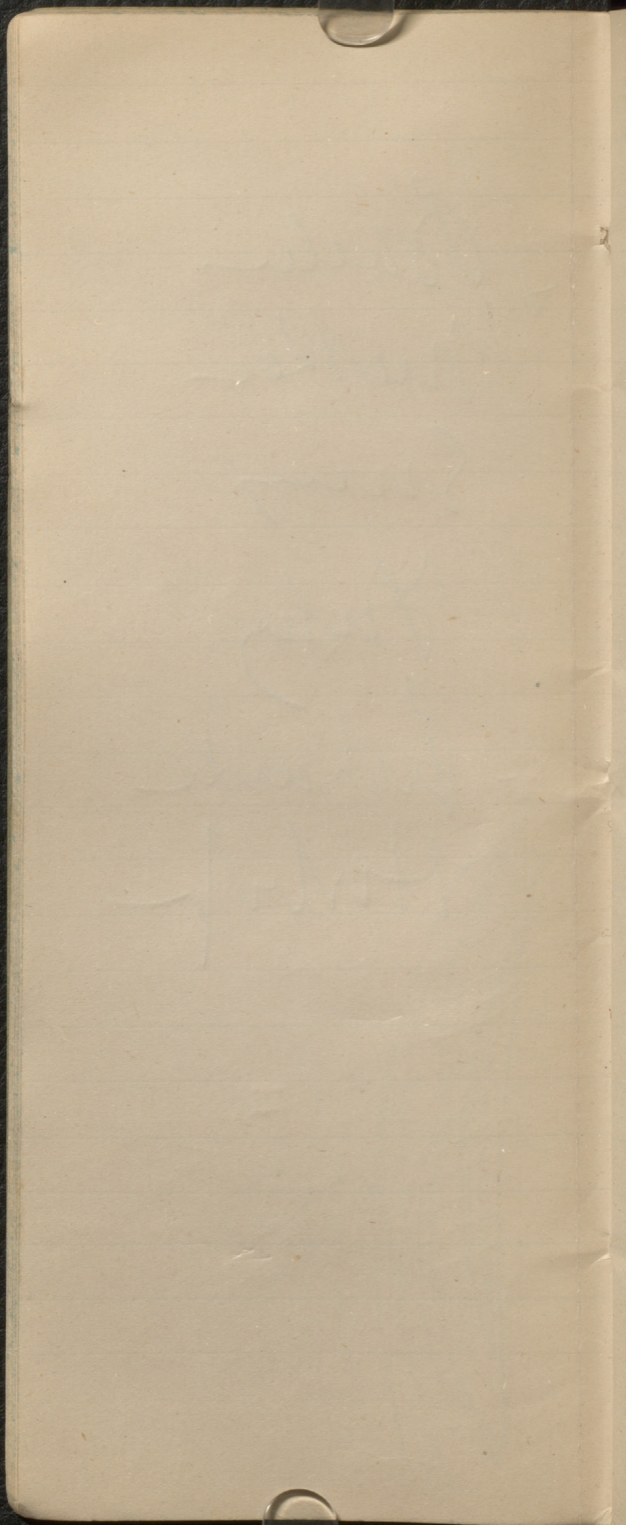


✓ Baker  
Walker  
Smy

July  
+ Richard

Herby







Structure on  
this paper  
8/11/11

+ Descimus

5 feet - grass

Thick & heavy

Sermentum

---

Reference to  
Grey Crest Lenses  
with all other  
Angelina Buns  
Thickness 10 ft  
Thickness 1 ft  
Lenses 2 ft  
+ ascending

---

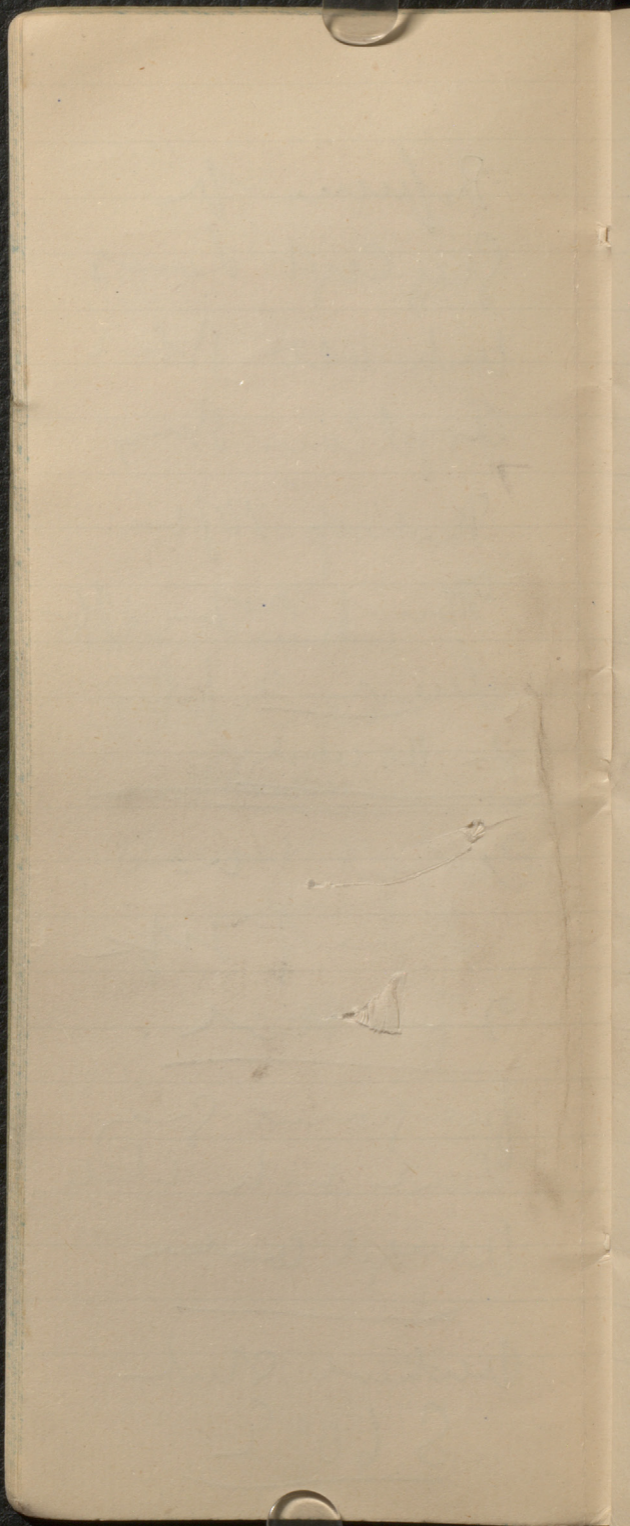
Cupped for  
Sphero-graph  
2 feet,

---

fine porous Gray  
Sand with white  
Angelina contents

---

Vertical and  
S 60° E



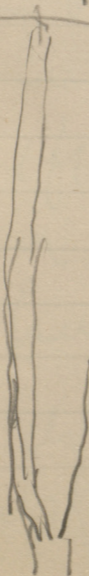
Dip - S. 20 E > 50

---

Some very strike

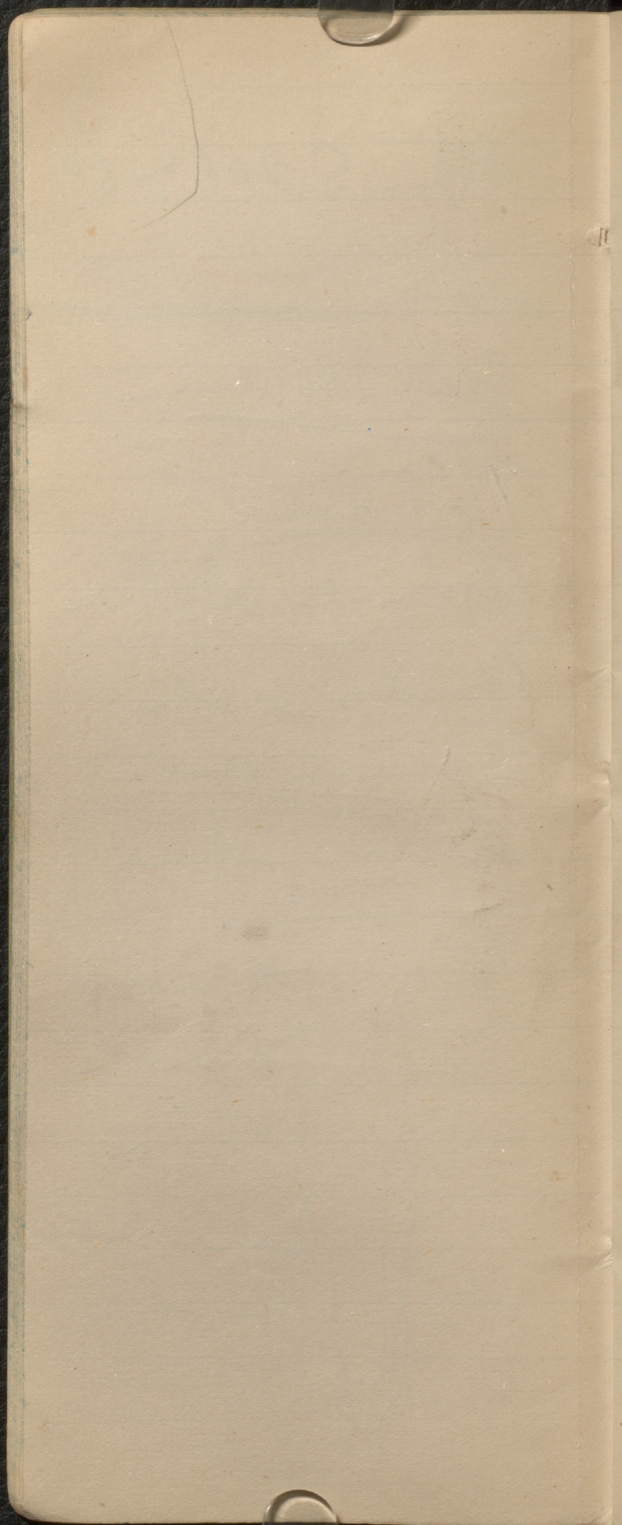
The faces  
Second Dyke  
shows with  
trace in  
dipping up

---



8 many  
of which  
at top

base S 40 E  
vertical



Summer 4 ft 9

3d Dyke

1000s wide

Width > 100

Abt 15 ft 2  
Surface the

then dfr 203

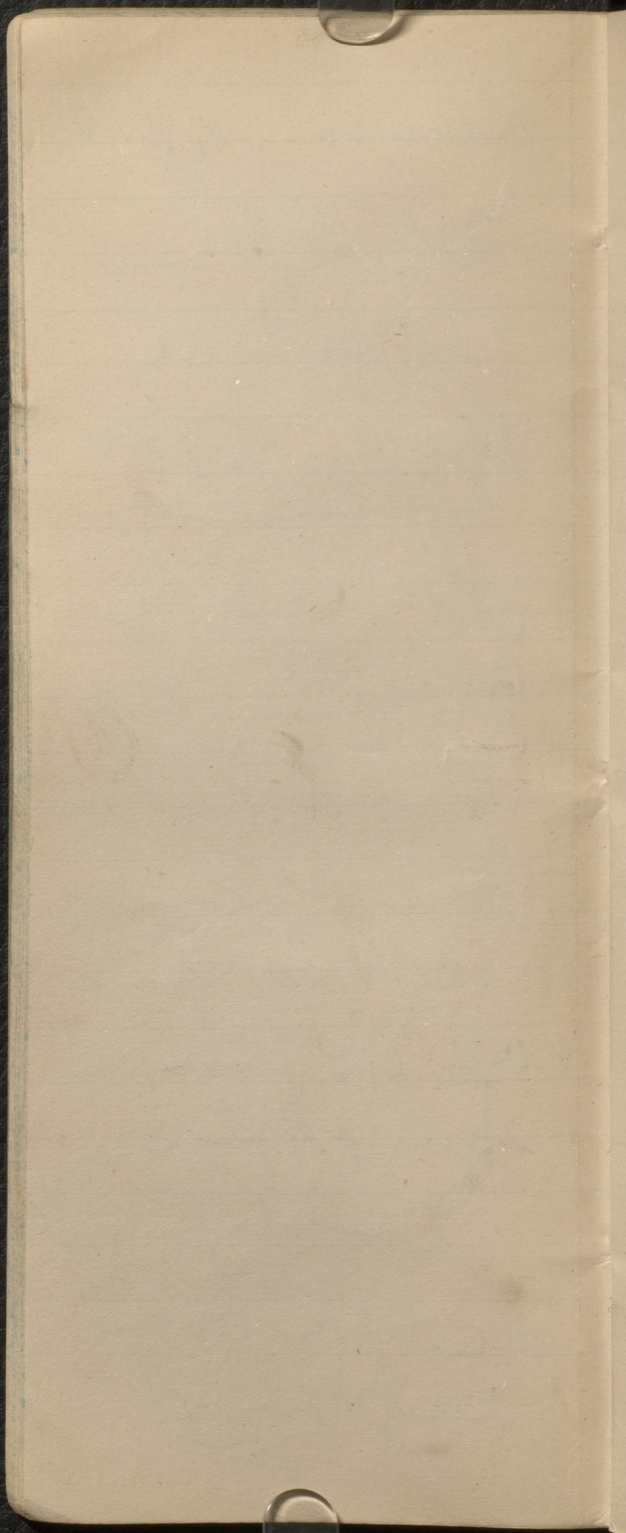
Iron & beam  
always dfr

all left this

then dfr

Franky

Some dfr work  
amp dfr

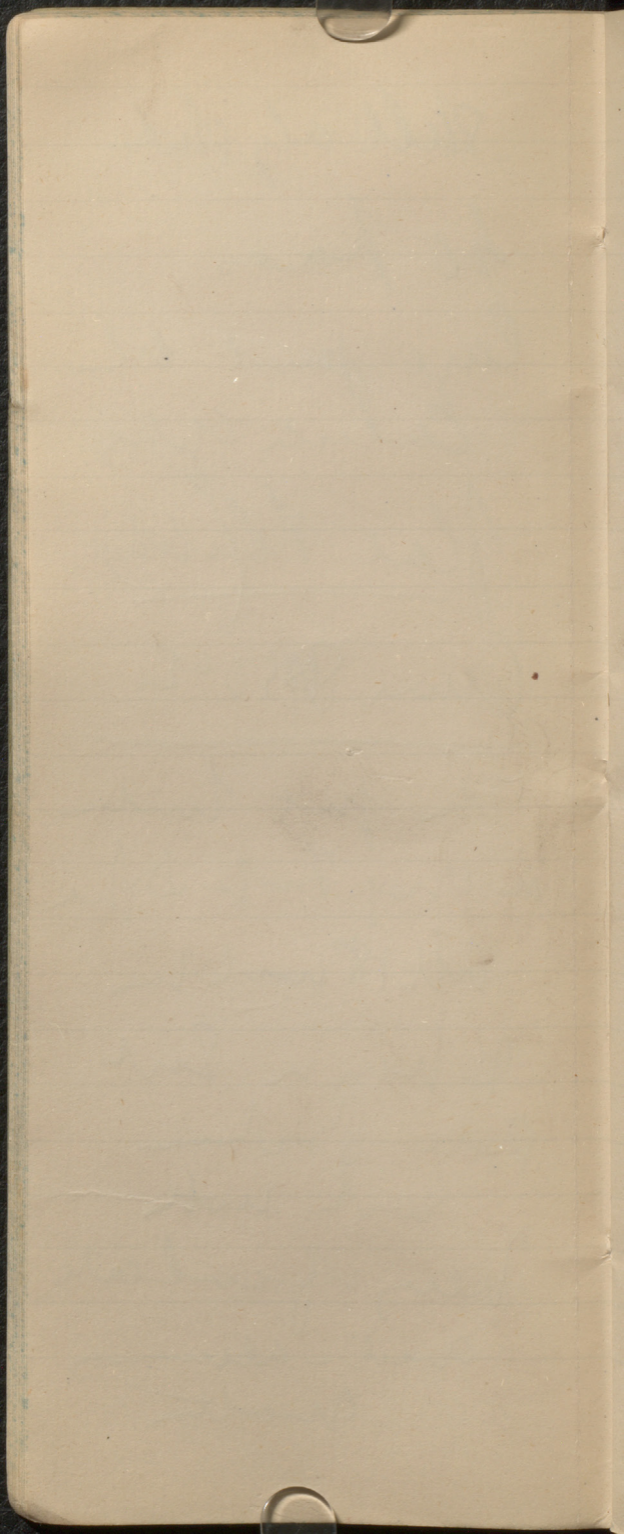




Still at least  
40 paces  
Large just at  
Calcutta Gorge  
Flax Rippling  
Curre \$45000

---

The just under  
a very low slope  
all 18 inches  
of hay on East  
side broken  
and with  
very few care  
and - always  
with



24 pieces still  
in stock

Sp. no 4

10 to 15 rods

Stakehead

E W

Neef barrel

14 rods

14 pins

Sp. no 5

like, Sp. no  
1

Very irregular

Stake S 60° E

