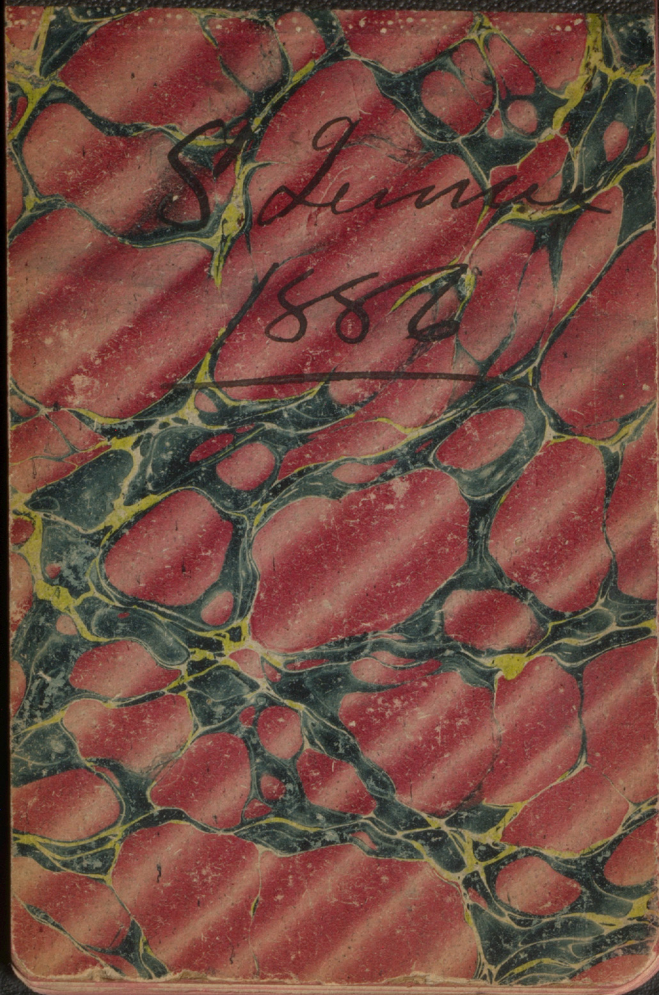
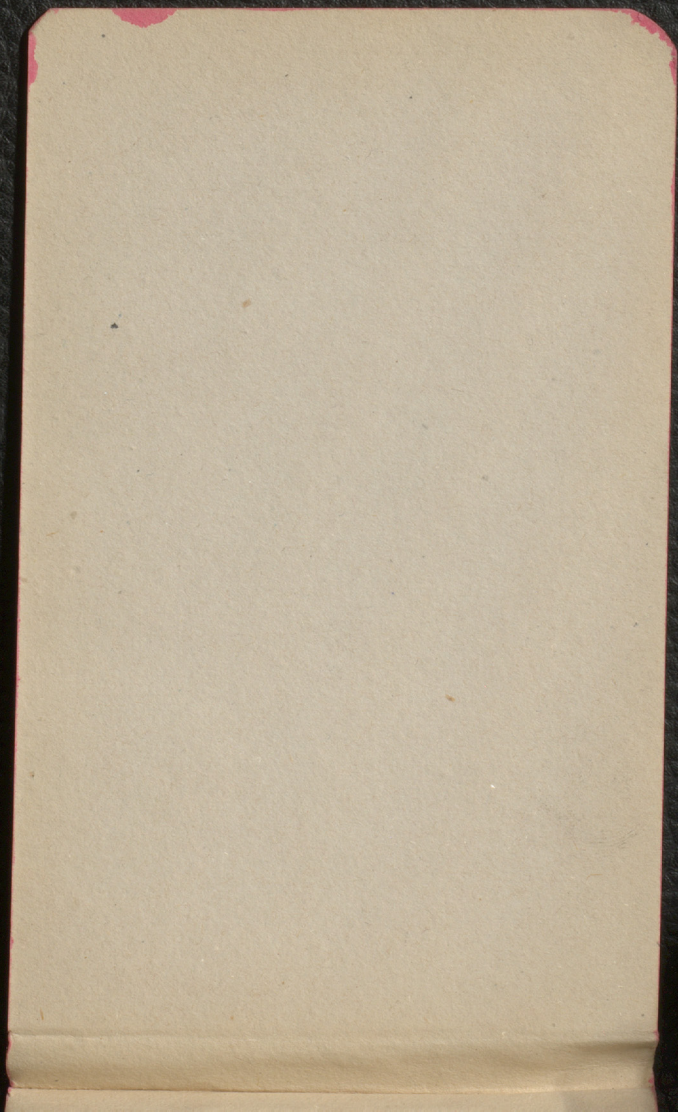
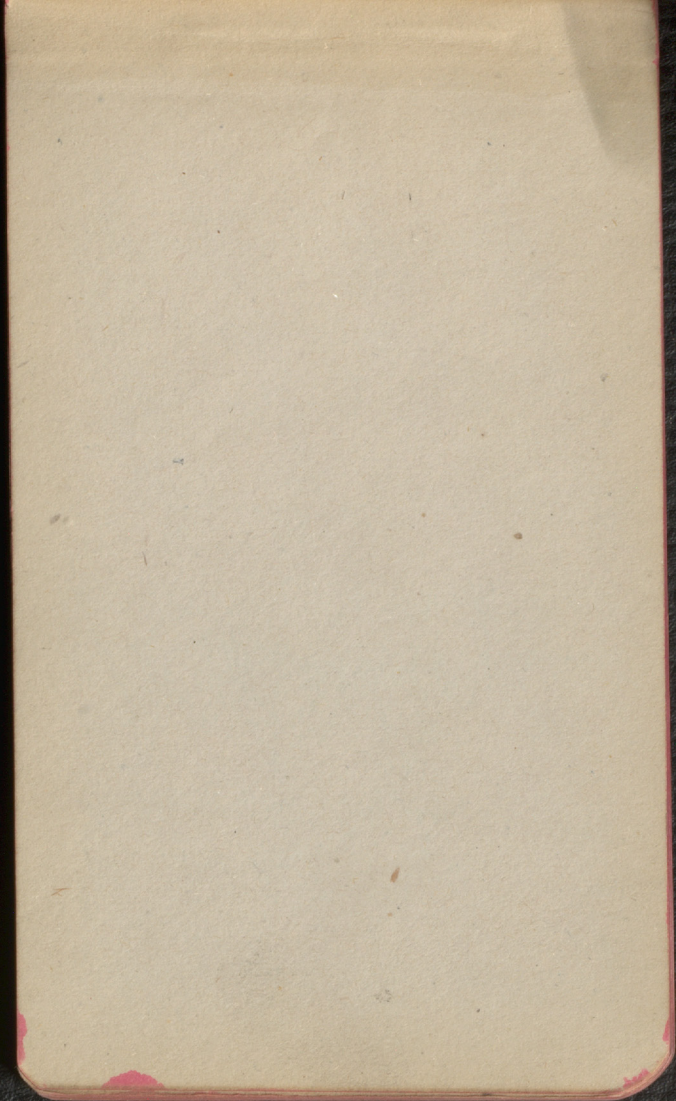


St. James
1882







De Bellfoye

Prictus Report

St George

June 4, 1887

Reynolds St - These

ridges of rocks

shown

at edge of

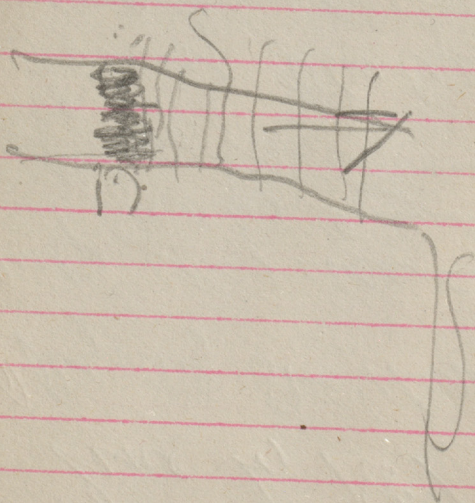
Harry's Bluff

= outcrop of

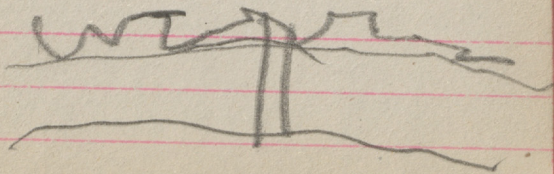
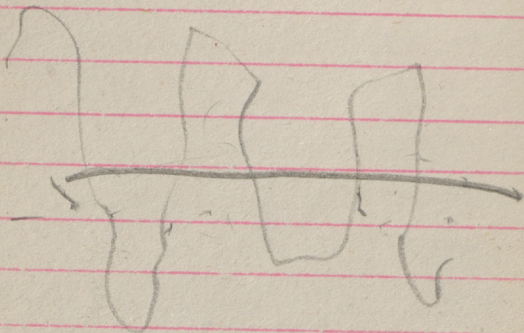
Calcareous

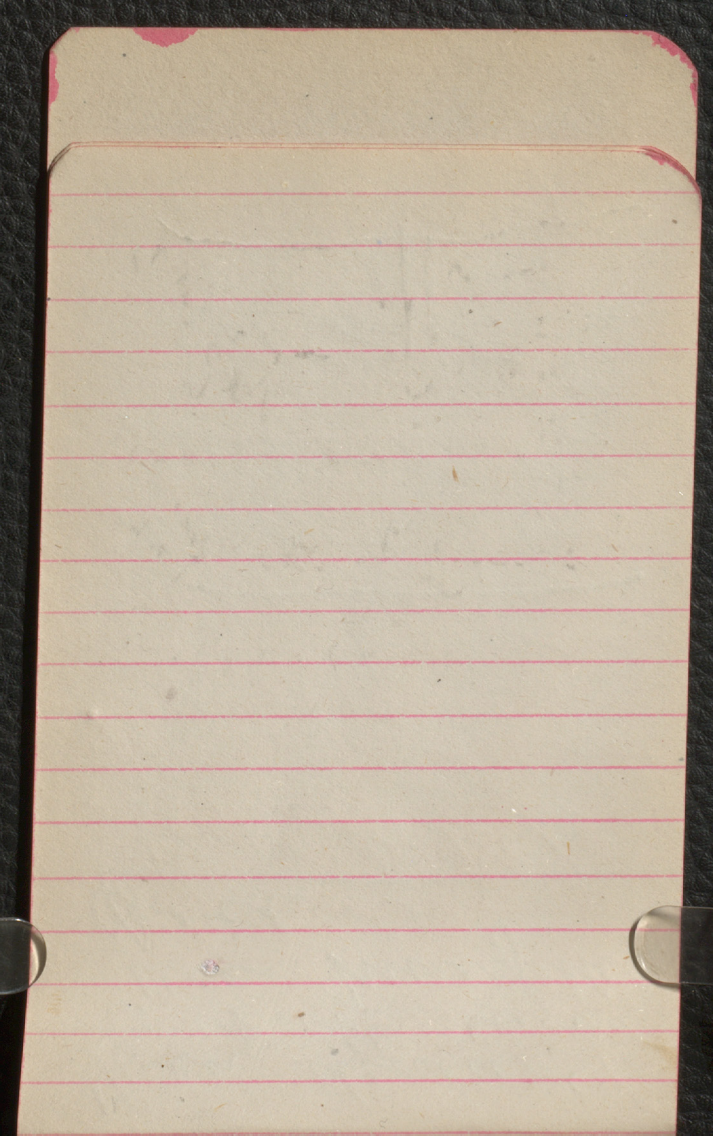
in February

RE



Then dinner
to Witt, very
near New York
Soil





Grass near
Paper Mill
in contact with
Sunset

Vertical of
Strike of line
of contact S-E

Of side of these
great ledge of
other grass
with beds of
Humboldt's

Strike - $81^{\circ} 10' E$

Dip down

Angle 40°

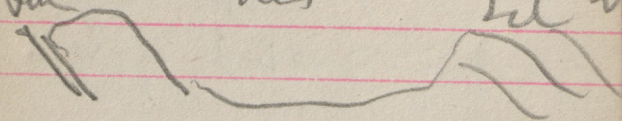
150 paces

of the

in the valley

Mr. Sewell
edge is at W

1st from the frame
Sun this Ed



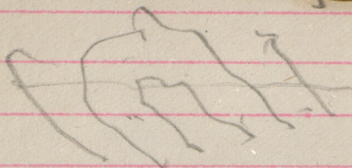
It is for a crew
to be made out
the service of
into NW —

My wild make
work of steel &
will support bridge
oldst & group of
that now —

Also Sweep from
more in only

more money

but the [redacted]



Quincy

Wash

Robert Brown

