

Reduce to this length.

*Review
made up*

PHYSICAL AND BIBLICAL HISTORY OF THE EARTH.

<i>Physical and Geological Periods.</i>		<i>Animal Life.</i>	<i>Vegetable Life.</i>	<i>Biblical History.</i>
<i>Eozoic.</i>	Pre-Geologic. Nebulous State Incandescent State Primitive Crust Universal Ocean			FIRST CREATIVE DAY. Formless and Void. SECOND CREATIVE DAY. Division of the Waters.
	Earliest Land (Lower Laurentian) Laurentian Huronian	Protozoa	<i>gens</i> Protophyta (in <i>diaplyte</i> beds.)	THIRD CREATIVE DAY. Land and Vegetation. FOURTH CREATIVE DAY. Continental Changes & Metamorph.
<i>Paleozoic.</i>	Cambrian Ordovician Silurian Erian Carboniferous Permian	Invertebrates Fishes Amphibians	Algae and Protogens Progens and Gymnosperms	FIFTH CREATIVE DAY. Invertebrates and Fishes.
	Triassic Jurassic Cretaceous	Reptiles and Birds	Cycads and Pines Palms and Angiosperms	Reptiles and Birds.
<i>Kainozoic.</i>	Eocene Miocene Pliocene Pleistocene Palanthropic Neanthropic	Mammals Man and Recent Animals.	Angiosperms Existing Vegetation	SIXTH CREATIVE DAY. Mammals. Antediluvian Man. Post-diluvian Man.

2

isil

Ac

o

PHYSICAL AND BIBLICAL HISTORY

13668-1935

Sixth Creative Day. Mammals. Antediluvian Man. Post-diluvian Man.	Angiosperms Existing Vegetation	Mammals Man and Recent Animals.	Cenozoic Miocene Pliocene Pleistocene Palaeolithic Neolithic
Reptiles and Birds.	Gnats and Flies Ferns and Angiosperms	Reptiles and Birds	Triassic Jurassic Cretaceous
Fifth Creative Day. Invertebrates and Fishes.	Algae and Protozoa Gymnosperms and Angiosperms	Invertebrates Fishes Amphibians	Permian Carboniferous Triassic Silurian Ordovician Cambrian
Fourth Creative Day. Land and Vegetation.	Protozoa	Protozoa	Devonian Lower Carboniferous Permian Triassic
Third Creative Day. Land and Vegetation.	Protozoa	Protozoa	Permian Carboniferous Devonian Silurian Ordovician Cambrian
Second Creative Day. Division of the Waters.	Protozoa	Protozoa	Permian Carboniferous Devonian Silurian Ordovician Cambrian
First Creative Day. Division of the Waters.	Protozoa	Protozoa	Permian Carboniferous Devonian Silurian Ordovician Cambrian

13668-1935

Kenozoic Mesozoic Palaeozoic Cenozoic

Physical and Biblical History of the Earth,

Physical & Geological Periods and Systems	Biblical History	Animal Life	Vegetable Life
<p><i>Pre-Geologic</i></p> <ul style="list-style-type: none"> Nebulous state Incandescent state Primitive crust Universal ocean 	<p><u>First Creation Day</u> Formless & void</p> <p><u>Second Creation Day</u> Dominion of Waters</p>		
<p><i>ozoic</i></p> <ul style="list-style-type: none"> Earliest land Lamentation Harmonia 	<p><u>Third Creation Day</u></p> <p>Land and vegetation</p> <p><u>Fourth Creation Day</u></p>	Protozoa	Pterophytes
<p><i>Palaeozoic</i></p> <ul style="list-style-type: none"> Cambrian Ordovician Silurian Erivan Carboniferous Permian 	<p><u>Fifth Creation Day</u></p> <p>Invertebrates Fishes</p> <p>Reptiles Birds</p>	<p>Invertebrates of the sea</p> <p>Fishes</p> <p>Amphibians</p>	<p>Algae & Pterogams</p> <p>Acropus & Gymnosperms</p>
<p><i>Mesozoic</i></p> <ul style="list-style-type: none"> Triassic Jurassic Cretaceous 	<p>Reptiles</p> <p>Birds</p>	<p>Reptiles & Birds</p>	<p>Grasses & Pines</p> <p>Angiosperms & Palms</p>
<p><i>Quaternary & Recent</i></p> <ul style="list-style-type: none"> Eocene Miocene Pliocene Plenstocene Early modern or Palaenanthropic Later modern or Neanthropic 	<p><u>Sixth Creation Day</u></p> <p>Mammals</p> <p>Anthropium <u>Man</u></p> <p>Post-pluvial <u>Man</u></p>	<p>Mammals</p> <p>Man & Recent Animals</p>	<p>Recent Vegetation</p>

MODERN SCIENCE
AND
BIBLE LANDS.

MODERN SCIENCE
AND
BIBLE LANDS.

BY

SIR J. WILLIAM DAWSON, LL.D., F.R.S., ETC.,
PRINCIPAL AND VICE-CHANCELLOR OF MCGILL UNIVERSITY,
MONTREAL.

*Author of "The Story of the Earth and Man," "Fossil Men," "The Origin of
the World," etc.*

London :

HODDER AND STOUGHTON,
27, PATERNOSTER ROW.

—
MDCCLXXXVII.

(All rights reserved.)

WORKS BY THE SAME AUTHOR.

I.

The Story of the Earth and Man. Ninth Edition, with
Twenty Illustrations. Crown 8vo, cloth, 7/6.

II.

The Origin of the World, According to Revelation
and Science. Fourth Edition. Crown 8vo, cloth, 7/6.

III.

Fossil Men and Their Modern Representatives. An
attempt to illustrate the Characters and Condition of
Pre-historic Men in Europe, by those of the American
Races. With numerous Illustrations. Second Edition.
Crown 8vo, cloth, 7/6.

LONDON: HODDER AND STOUGHTON, 27, PATERNOSTER ROW.

PREFACE.

THIS work is intended as a supplement to the Author's previous volumes, entitled "The Story of the Earth," "The Origin of the World," and "Fossil Men," and more especially to bring out the new information obtained in his recent travels in the East, and his matured conclusions respecting certain debated points not treated of or only slightly noticed, in the works named above.

BUTLER & TANNER,
THE SELWOOD PRINTING WORKS,
FROME, AND LONDON.

CONTENTS.

CHAPTER I.—INTRODUCTORY.

General Notions of the Relations of Modern Scientific Inquiry to the Lands of the Bible, and their Bearing on Recent Discussions	PAGE 123
--	-------------

CHAPTER II.—THE FIRE-BELT OF SOUTHERN EUROPE.

Geological Features and History of the Northern Shore of the Mediterranean—Their Influence on Early Men in Europe and in the East—Their Connection with New Testament Literature and Early Christianity	
---	--

CHAPTER III.—MEN WHO LIVED BEFORE HISTORY.

The Origin and Geographical Relations of Primitive Man, in the East and in Europe—Eden and Modern Science—Palæoœemic Man in relation to Antediluvian History—Physical Causes, Characteristics, and Results of the Deluge	
--	--

CHAPTER IV.—ANTEDILUVIAN ARTS AND CULTURE.

The Primitive Simplicity of Man and his First Steps of Progress—Invention and Persistence in the Arts—Art of the Cave Men—Traditional Antediluvian Arts—Working in Stone, Metals, Wood, and Clay—The Inheritance of this Art as seen in the Earlier History of Egypt and Chaldea—Egyptian Stones and their Teaching	
---	--

CHAPTER V.—PALESTINE AS AN EARLY HOME OF MAN.

	PAGE
Geological Structure and Physical Peculiarities—Early Cave Men—Primitive Connection with Africa, and Separation in Earlier and Later Times by the Sea and by Desert—Modern Physical Changes—The Dead Sea and the Cities of the Plain—Influence of the Land on its People	

CHAPTER VI.—THE VALLEY OF THE NILE.

Its Geological Structure and History—Origin of the Delta—Primitive Condition and Earliest Colonists—The Hebrews in Egypt—The Story of the Exodus in Connection with Physical Features and Changes	
---	--

CHAPTER VII.—THE PRESENT AND THE FUTURE.

Material Resources of Palestine and Egypt—What Science may do for them—Their future Possibilities—Probabilities in Connection with European Nations, the Turks, the Arabs, the Copts and Syrians, and the Jews—Prophetic Intimations	
--	--

last proof

PHYSICAL AND BIBLICAL HISTORY OF THE EARTH.

Physical and Geological Periods.		Animal Life.	Vegetable Life.	Biblical History.
Pre-Geologic. Eozoic.	Nebulous State Incandescent State Primitive Crust Universal Ocean			FIRST CREATIVE DAY. Formless and Void. SECOND CREATIVE DAY. Division of the Waters.
	Earliest Land (Lower Laurentian) Laurentian Huronian	Protozoa	Protophyta	THIRD CREATIVE DAY. Land and Vegetation. FOURTH CREATIVE DAY. Continental Changes & Metamorphosis.
Paleozoic. Mesozoic.	Cambrian Ordovician Silurian Erian Carboniferous Permian	Invertebrates Fishes Amphibians	Algae and Protogens Progens and Gymnosperms	FIFTH CREATIVE DAY. Invertebrates and Fishes.
	Triassic Jurassic Cretaceous	Reptiles and Birds	Cycads and Pines Palms and Angiosperms	Reptiles and Birds.
Kainozoic.	Eocene Miocene Pliocene Pleistocene Palanthropic Neanthropic	Mammals Man and Recent Animals.	Angiosperms Existing Vegetation	SIXTH CREATIVE DAY. Mammals. Antediluvian Man, Post-diluvian Man.

This correction
has been made
on five separate
pages

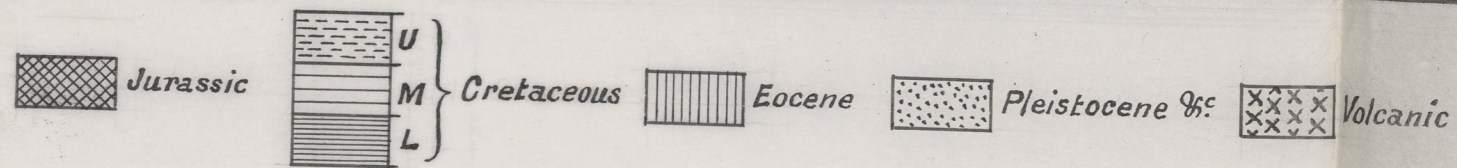
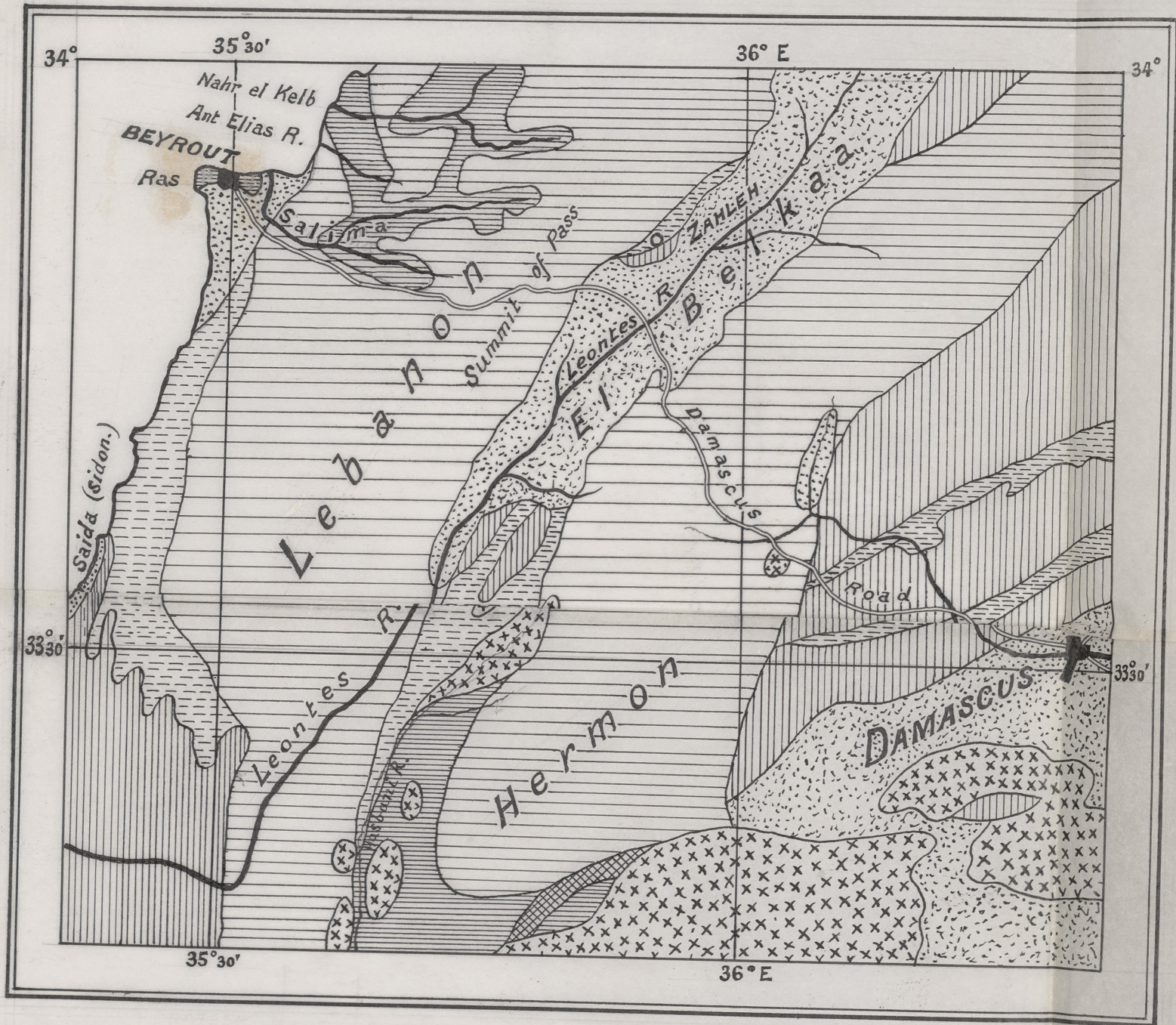
Ac

Seventh Day

(The rest of sheet 3
is correct JWA)

This is new. Insert
the words of in time.

2 a. p. 11. 87
9.

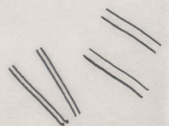


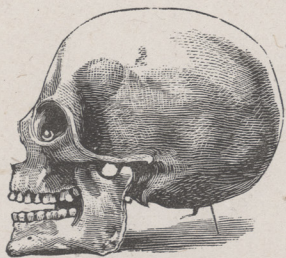
Reduce to
this size

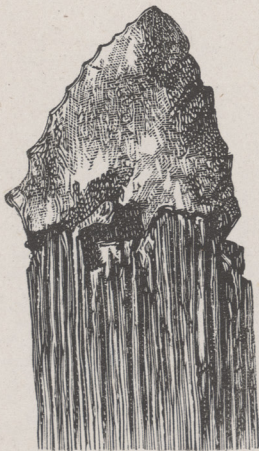
Will Mr. Pauland kindly
make for me an edition
of this map - size of
the square above, and
as soon as possible

J. M. Dawson

Oct 15-7
1888







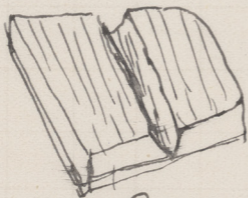




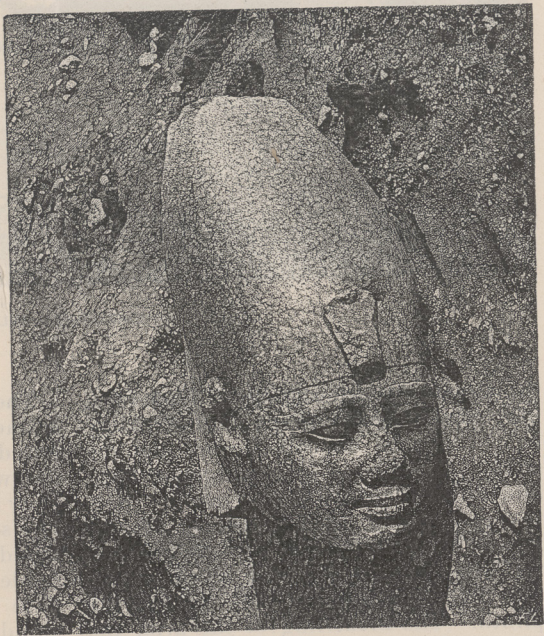


5 ft 10 wide
3 ft 9 side hgt
7 1/2 ft deep

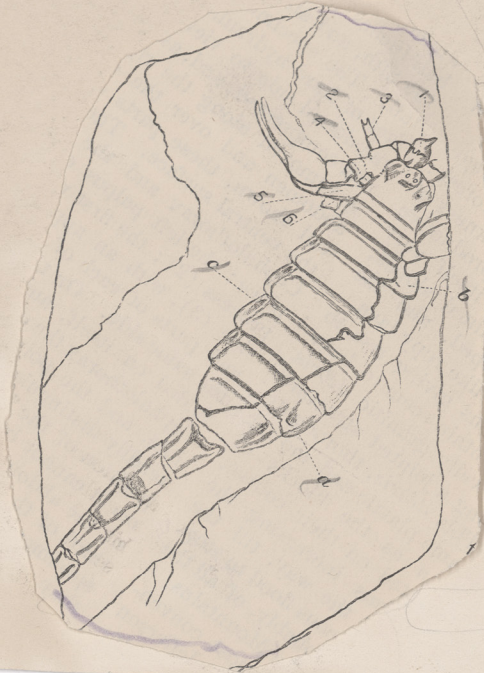




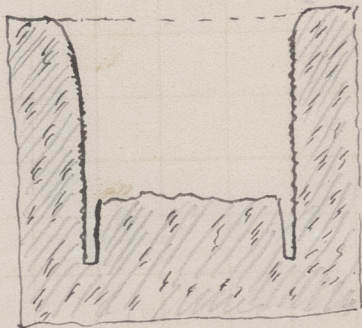
Same slab
of Bonratt. with
traces of
cut - fresh
Retire



HEAD OF AMENEMHAT I.—(RED GRANITE.)



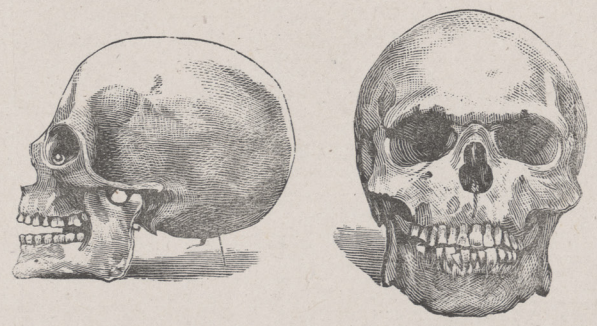
+2



Section of Root
Hole in granite
Grove
Petrie.



3



Cut in London
with the holder

Fig 14. Skulls and Wampum of
Snaches, Caray Islands.

FIG. 11.

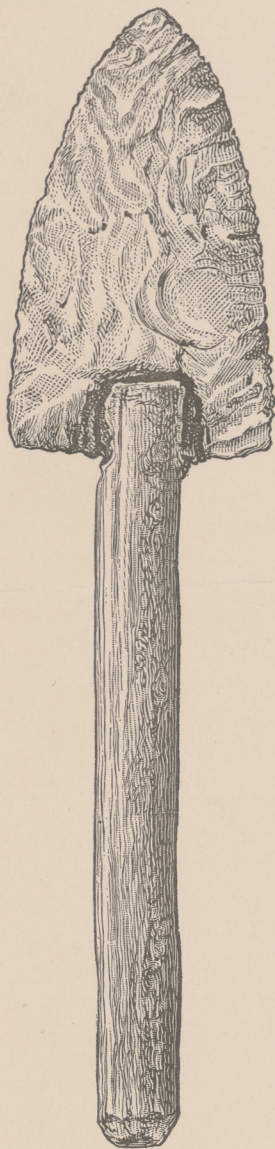
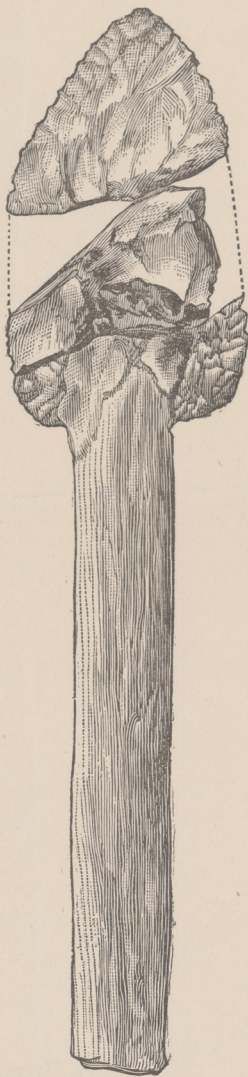
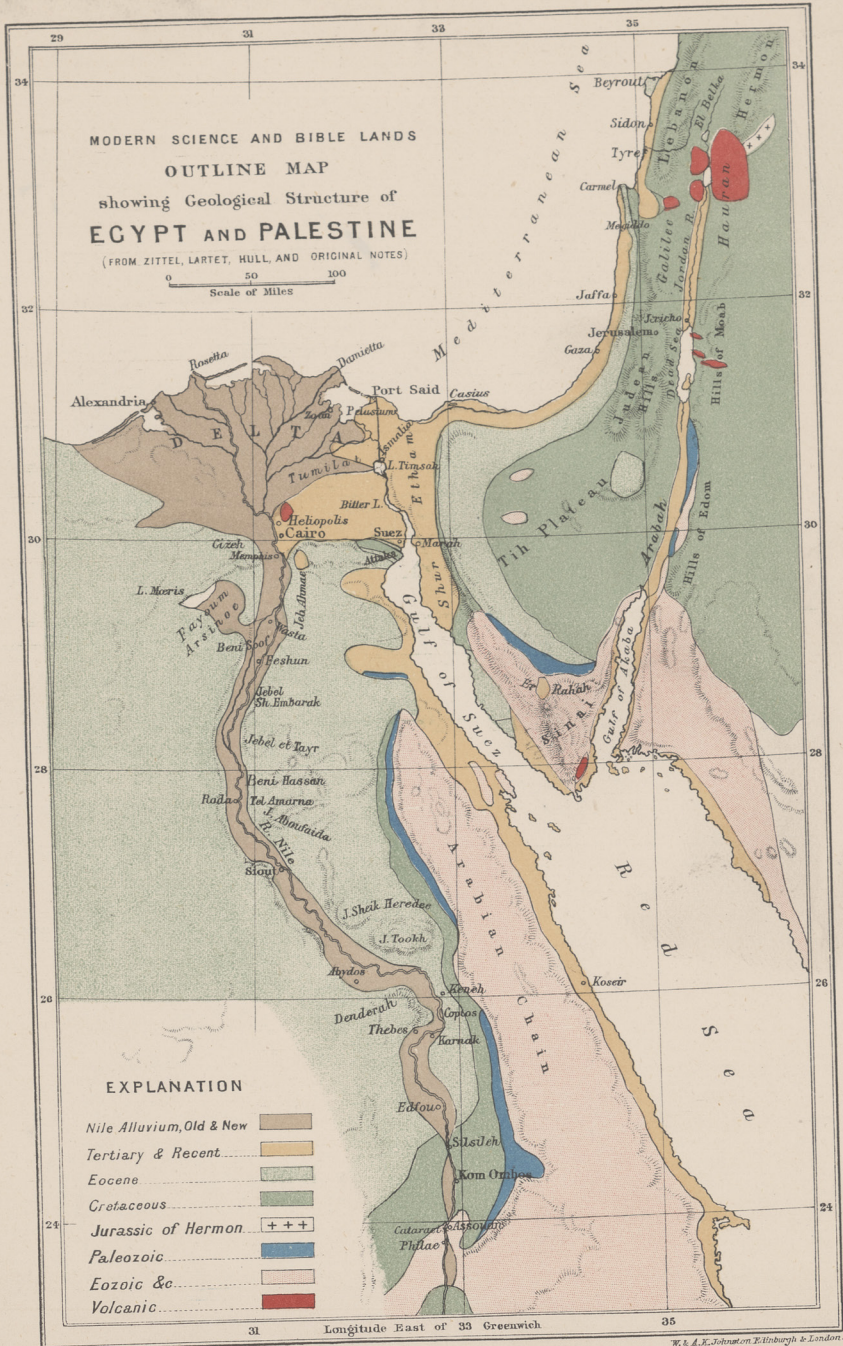
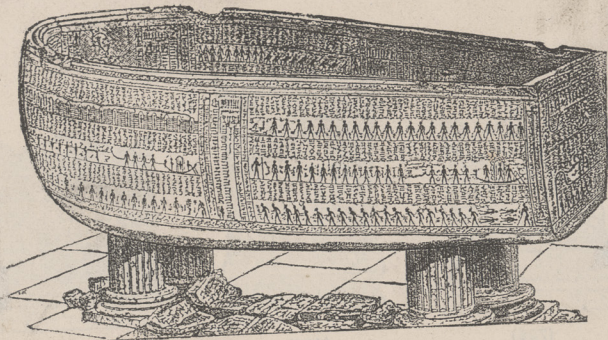


FIG. 12.

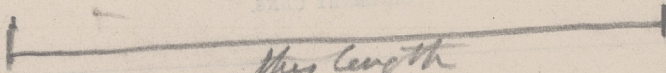


FIGS. 11, 12. FLINT KNIVES IN WOODEN HANDLES. $\frac{1}{2}$
FROM BURIAL CAVES IN COAHUILA, MEXICO.



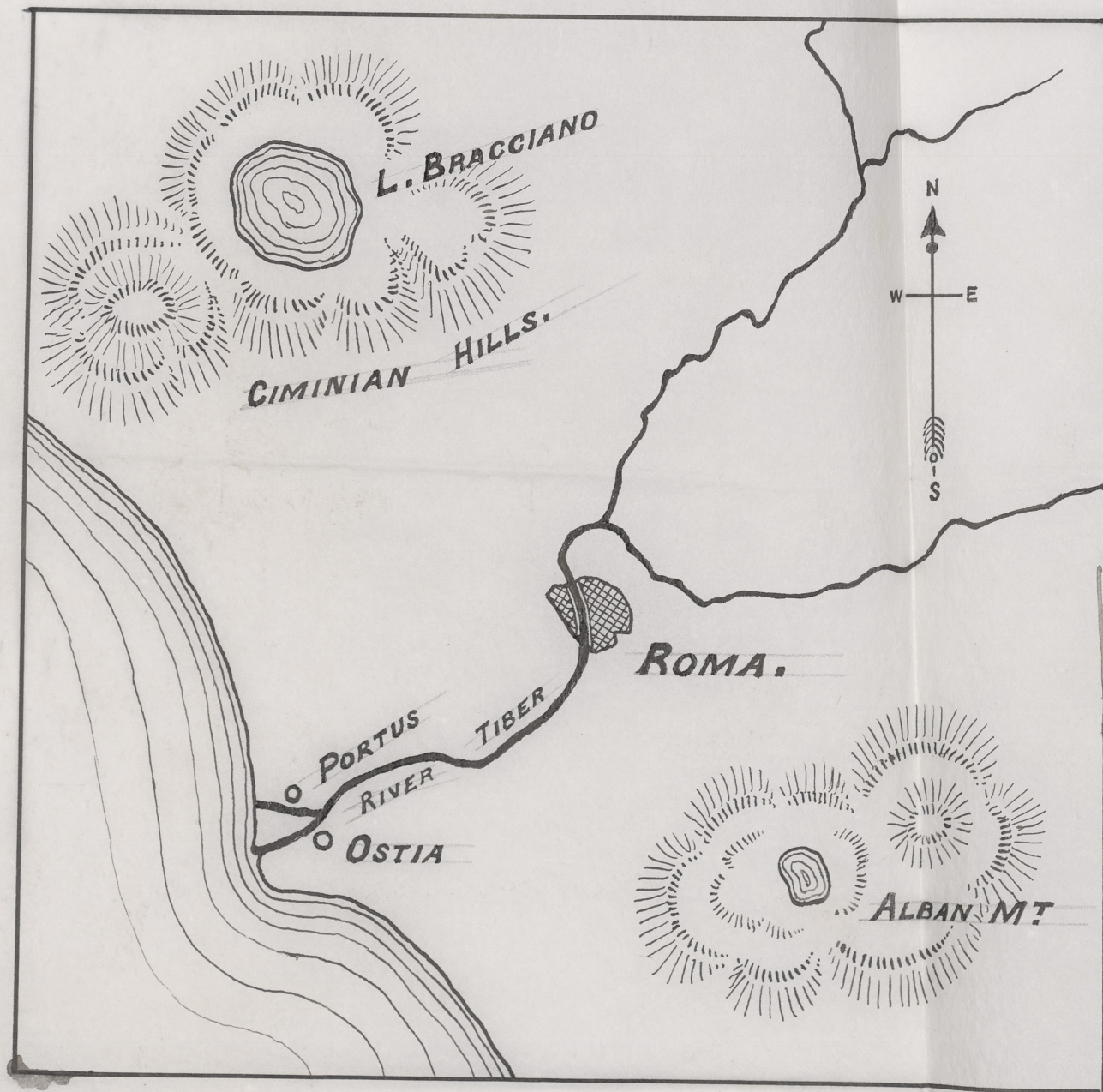


ALABASTER SARCOPHAGUS OF SETI I.

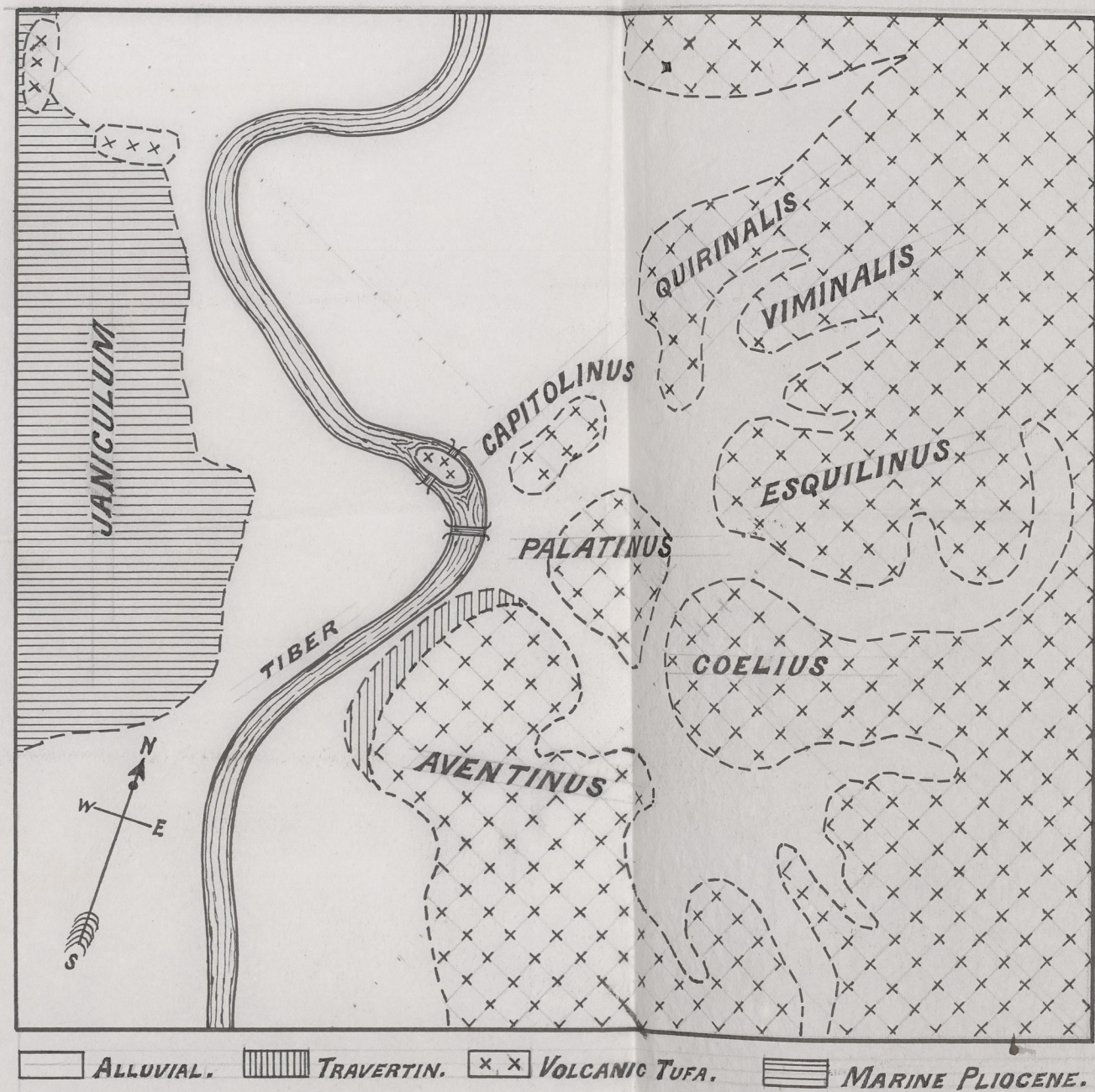


*this length
12 feet*

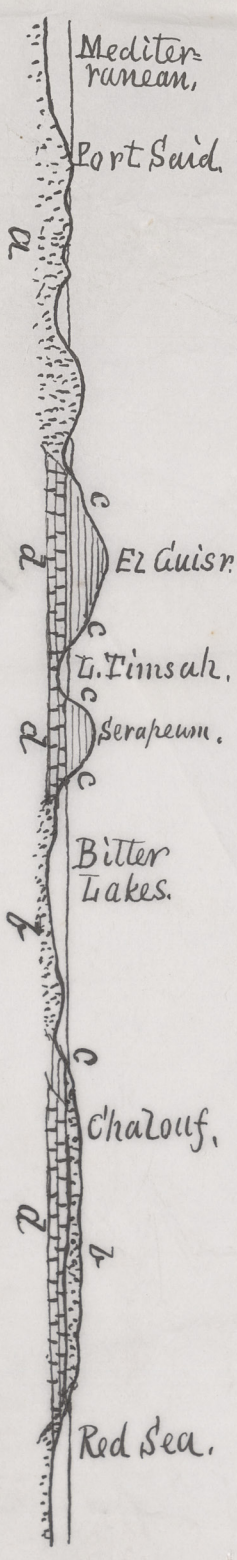




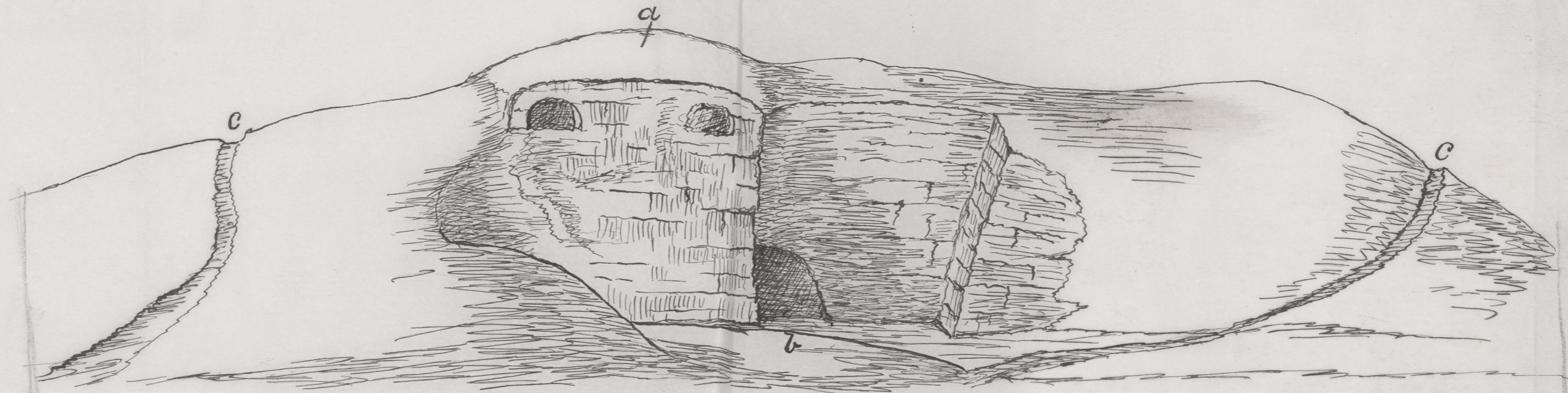
Reduce to this length



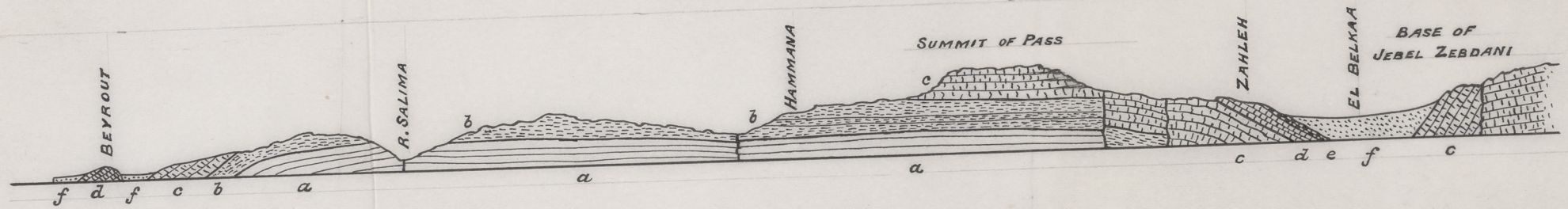
Reduce to this length



Profile to the West, length



Reduce to this length



Reduce to this length



Reduce a little

too dark

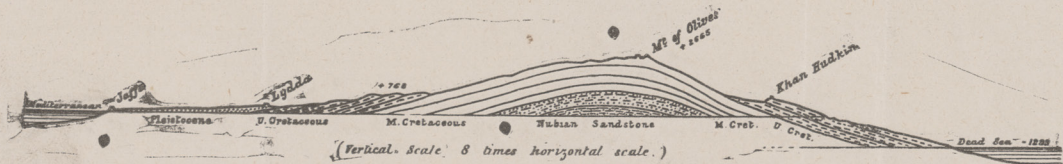
Width of page
Reduce black
as near this as
possible



Take out
this. It
is a mis-
take a
Kaw in the
Photo.

Reduce
a little

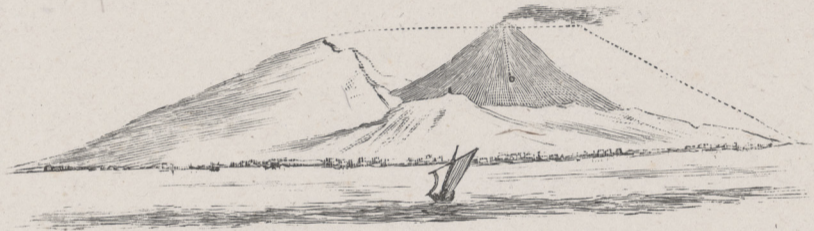
Will send you a better proof on Monday
I regret to have to say that they will not have the electro. until then
1865

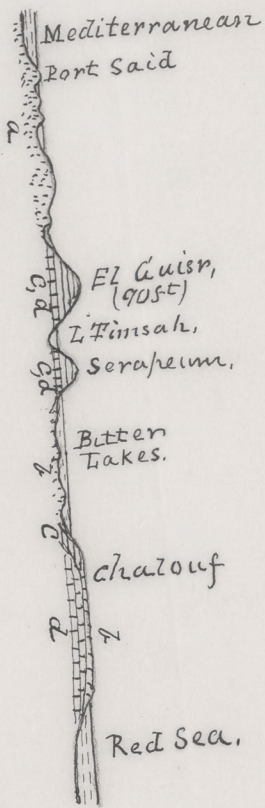


Section from Taffa to the Dead Sea

Fig. 14



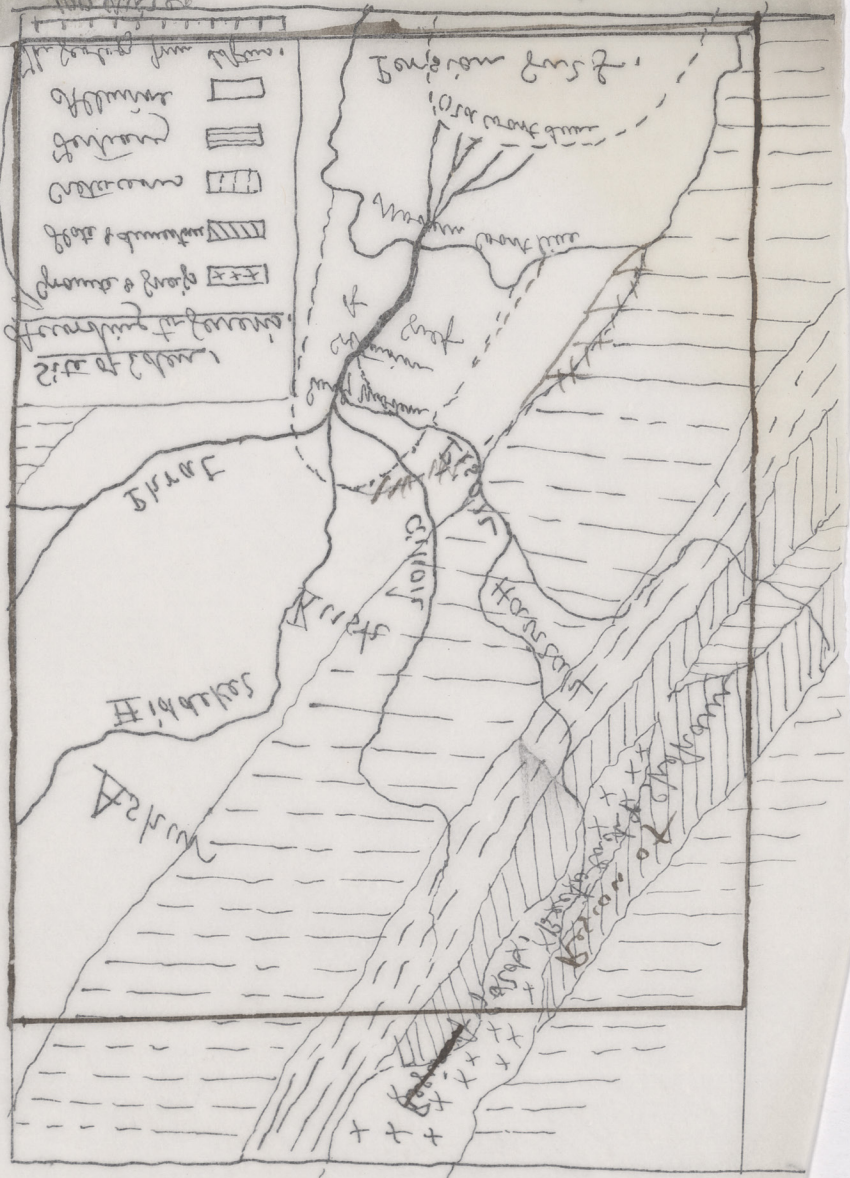


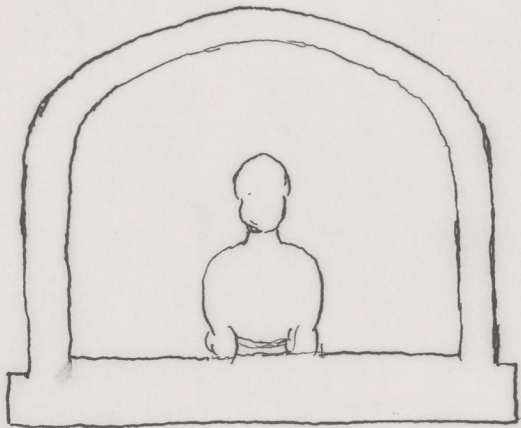


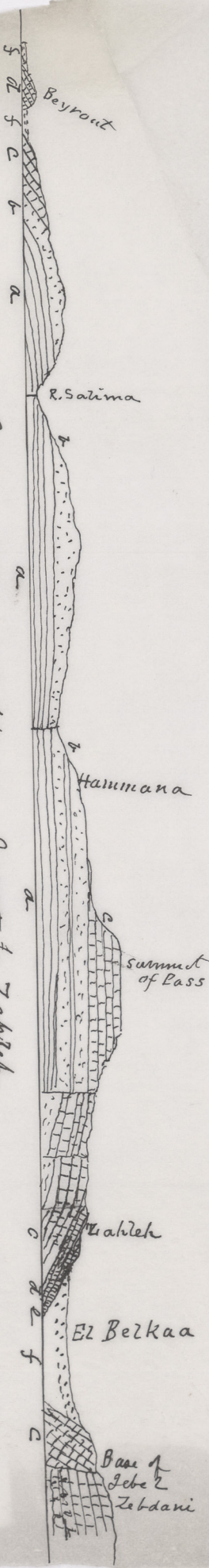


but certain it is that the puppet
represents a Carl duplicate puppet
in the works of the vessel
to take place in this manner
puppet or what it may signify
and that this belongs to
that term of the names
of the fentiles & which
are just upon a two
puppet; If there be
allied any fault to these
puppets an actual
interest will be given to
Palatine and to Germain
of the puppets thus held
out in respect to them,

Handwritten title or notes at the top of the page, possibly including a scale or reference.



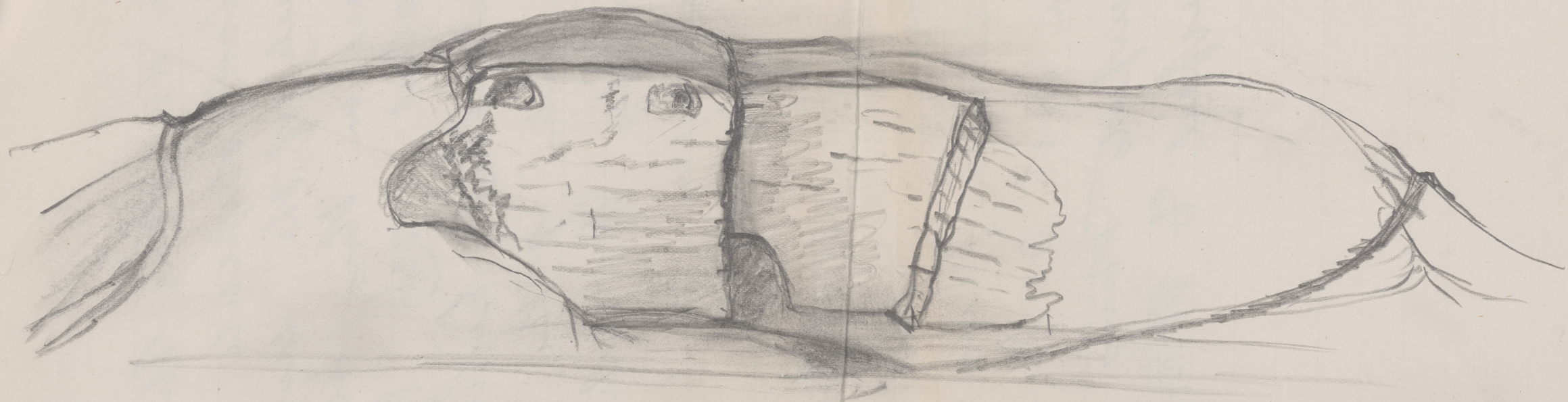




General Section across Lebanon - Beirut to Zahleh

- (a) Lower Devonian (Muscovian etc)
- (b) Zeynie & degnite Sandstone (L. Cambrian)
- (c) Argillites & shales (Upper Cambrian)
- (d) Chalk & limestone, Sh. = beds see (Saurian & Permian)
- (e) Mammillata (Bece)
- (f) Mottled

Mammillata & M



Frontispiece to face Title

Arrange
Figures 1 to 10
as placed in
duplicate series,
but here with
but in all the
Cults take
the inscriptions



from this Pyramid of Kephren (Cephren), and ancient
list not eroded Cliff of Pyramid plateau
from the rough at Gizeh. (From Photograph)
pull, & it is
Roman not italic To face Chapter II.

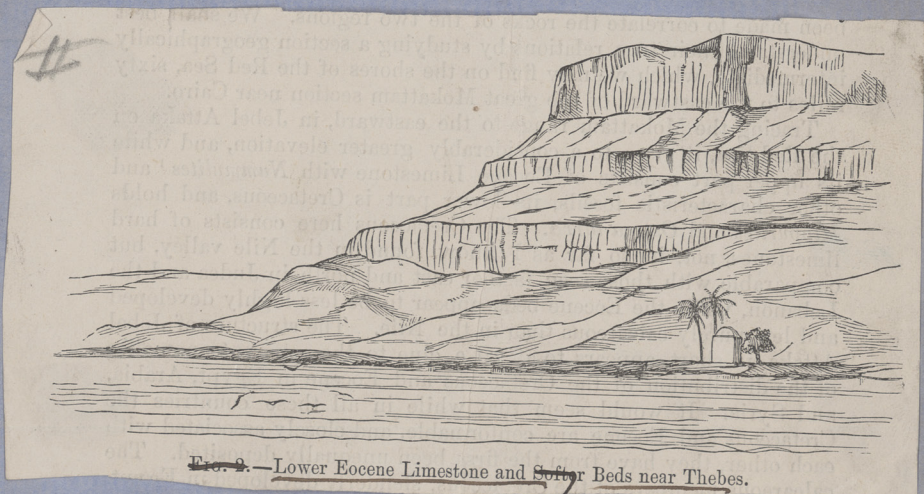
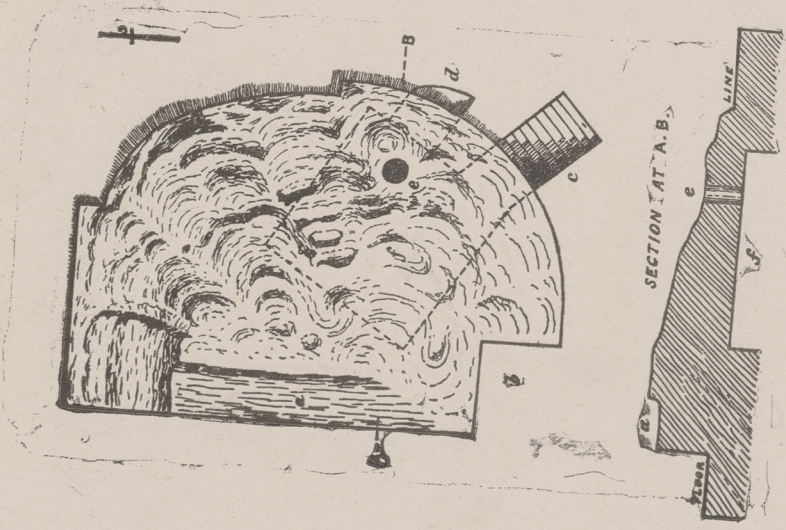


FIG. 2.—Lower Eocene Limestone and Softer Beds near Thebes.

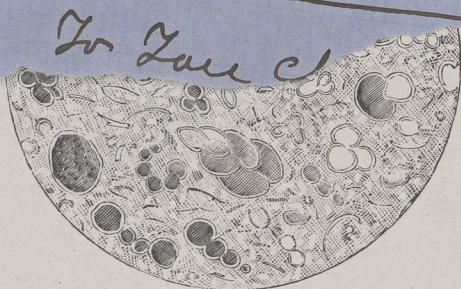
Clarke

To face Ch. IV



119
3
2

To face Chapter III
Map of Beodes from Lecture Room
of June 1884 —
Doubled as two = page map.



Section of Black bituminous Limestone of
Naby Mousa, ^{Chagripel,} showing Globigerinae, Textularinae,
with their cavities filled with bitumen, which
also saturates the intervening matrix com-
posed of broken tests of Foraminifera and
Coccoliths.

191
(3)

To Face Chap V,



Section of Black bituminous Limestone of
Noby Mousa, ^{Choguispel,} showing Globigerinae, Lenticularia
with their cavities filled with bitumen, which
also saturates the intervening matrix com-
posed of broken tests of Foraminifera and
Coccoliths.

119
64
To face Chap. VI



Ascent of the Pass of Nahr el Kelt
from the North, with one of the Tablets.
(sketch by E. D.)

To face Chapter VIII

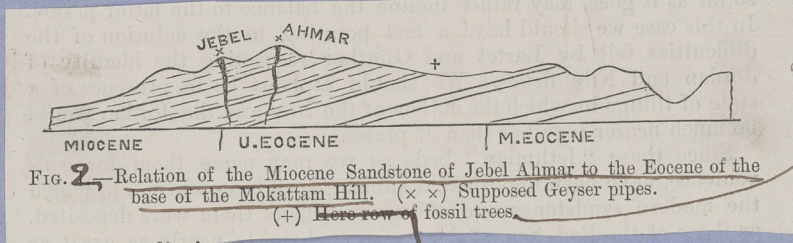
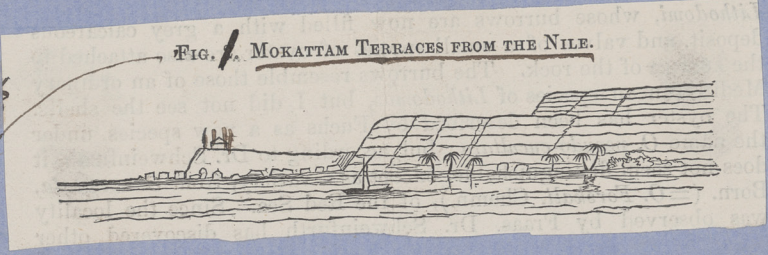
5



Seti I, King of Egypt, offering a statue
of Ma the goddess of truth & Osiris,
from the wall of a Temple at Abydos,
(From a Photograph)

Chapter ~~12~~ 13

119
6



Similar to
those of the
"petrified
forests!"

Bed with

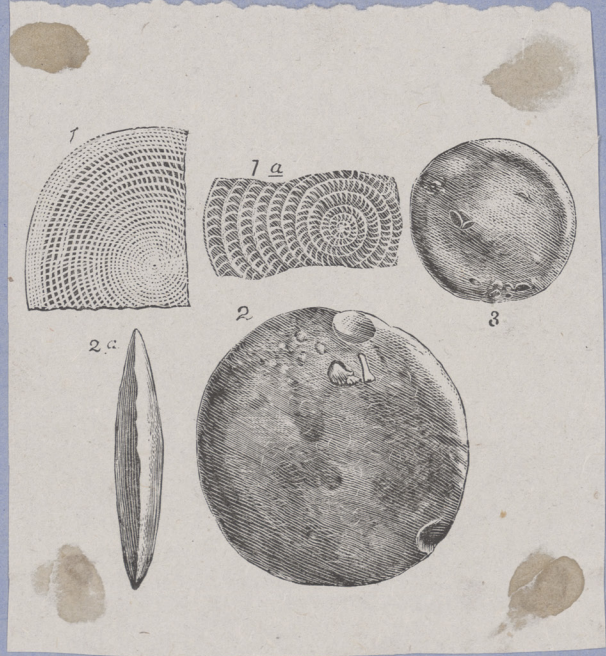
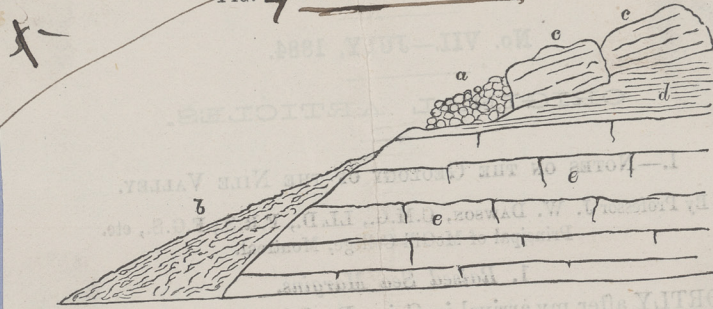


Fig 3
Nummulites Gizehensis (var. Lyelli), Gizeh
(1) Section showing chambers, (1a) Portion magnified,
(2 & 2a) Large specimen, (3) small specimen.

Chap I (con)

119

FIG. 4 RAISED BEACH AT GIZEH.



a. Beach. b. Sand. c. Brown Limestone. d. Clay and Marl. e. Limestone.



Fig 5. Head of Kaphra (Cephren), from a statue in the Bouzak Museum.

119
98
Chap. IX (cont)



Fig 6
Hyksos Head, sketched from
a sphinx, from Laris (Zouan),
in the Boulaq Museum, (E. D.)

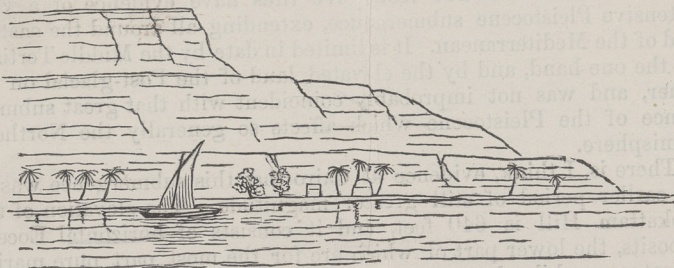
112
9

Chapter II,

7

#

Fig. 7. TERRACES IN EOCENE LIMESTONE ABOVE ASSIOUT, ON ARABIAN SIDE OF THE NILE.



7
Fig 10



Fig. 8. Cretaceous Sandstone and Marl above Silsilis.

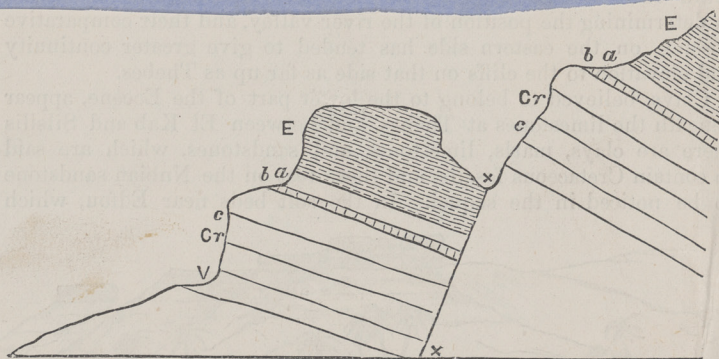


Fig. 9. Section at Jebel Attaka, partly after Le Vaillant. (E) Eocene; (Cr) Cretaceous, including (a) White Chalky Limestone; (b) Red and Greenish Marl; (c) Hard Limestone and Dolomite with *Hippurites*, *Ostrea*, etc.; (v) Position of Quarry; (x x) Supposed Line of Fault.

Fig 10

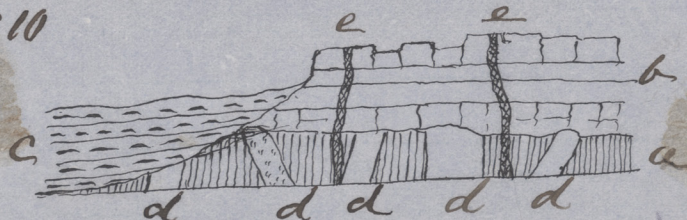


Fig 10, Crystalline Rocks and Arabian Sandstone at First Cataract.
(a) Laurentium, (b) Second Crystalline Series, (c) Arabian Sandstone
(d) Dykes of Granite & Diorite, (e) Dykes of Felsite and Basalt.

112
10

Chapter III,

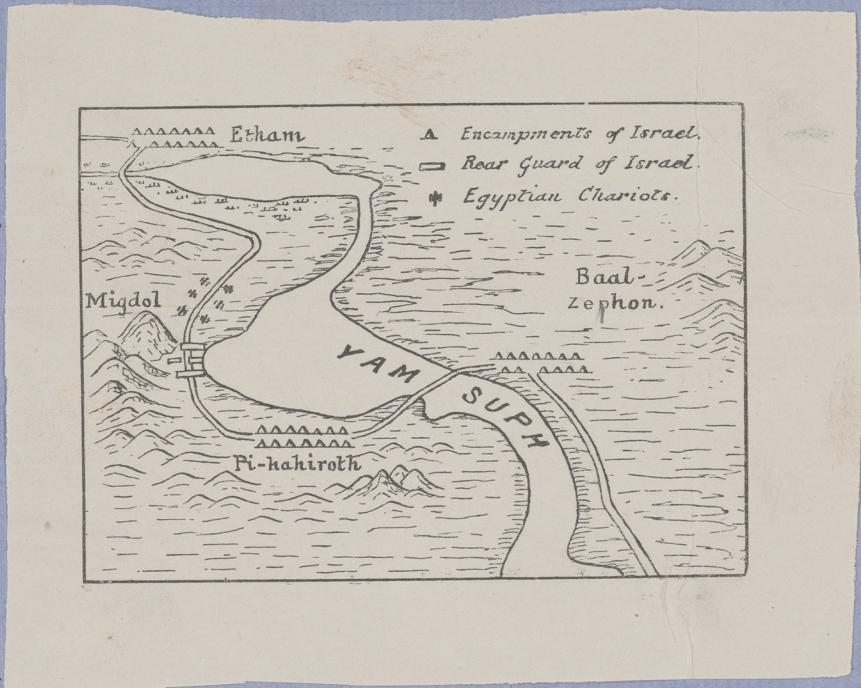


Fig 11. Bird's Eye View illustrating the Crossing of the Red Sea.



Fig 12. - View of Migdol and the Sea from the North, with the range of Zebel Attaka in the distance; From a point ^{at} the probable route of the Israelites after leaving Etham.

112 ✓
111 ✓

Chap III can



Fig 13. Head of Menepthah, the
Pharaoh of the Exodus - Boulak
Museum.

Chapter IV.

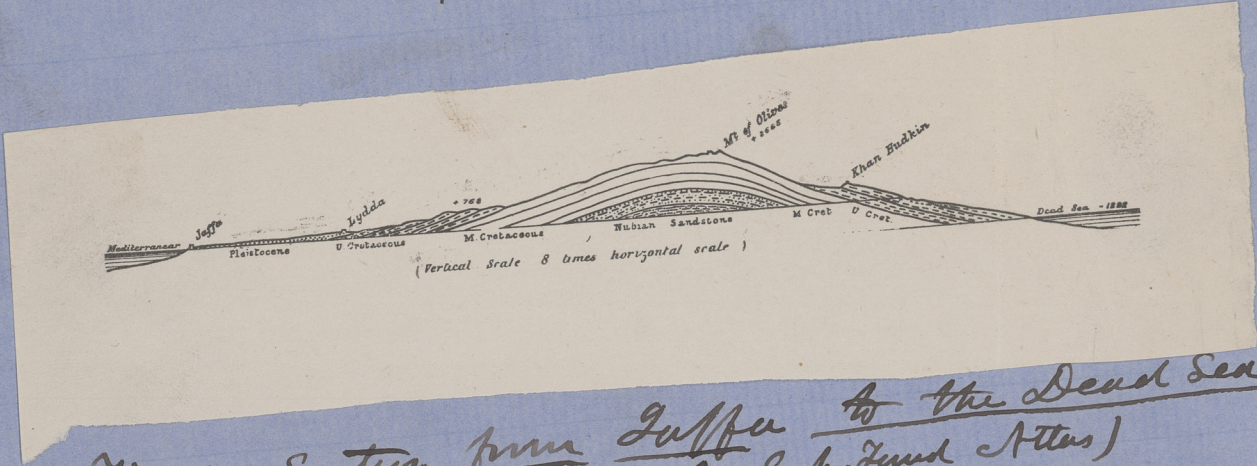


Fig 14. Section from Jaffa to the Dead Sea, (The topography from Pal. Exp. Found Atlas)

19

Fig 17. Cliff and City wall, at the entrance of the Royal Quarries, showing the dip of the limestone.

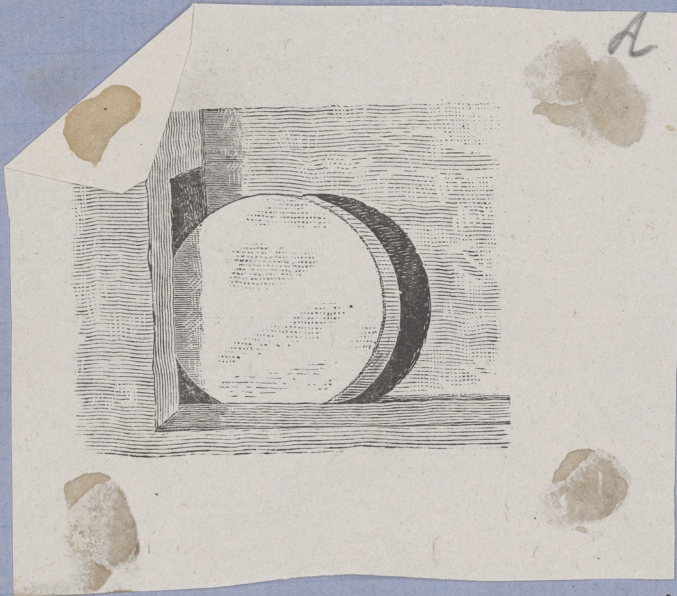


Fig 17. Cliff and City wall, at the entrance of the Royal Quarries, showing the dip of the limestone.

at a... for developing the wa... (19a)

Chap IV con

14



19
A view of a Sepulchre,



Fig 17. Cliff and city wall, at the
entrance of the Royal Quarries,
showing the dip of the limestone.

at a ...
for developing the work of ... (17a)

Chap IV con

14



19

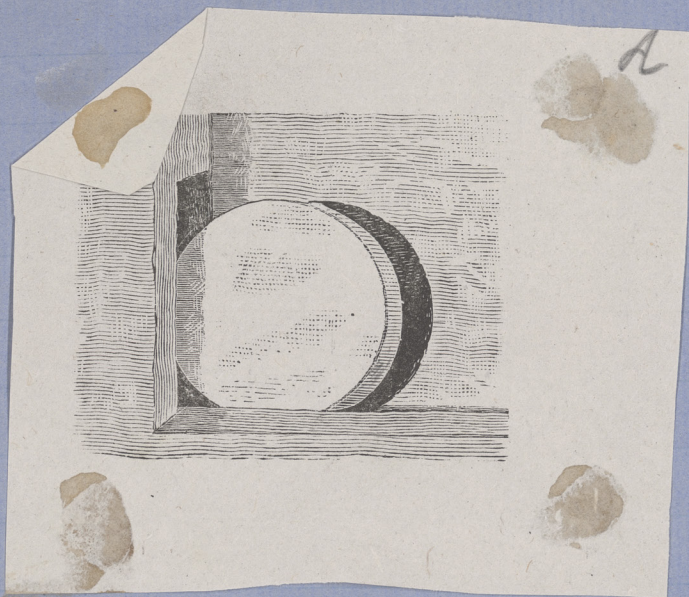
Fig 18. Door of a Sepulchre,
with rolling stone, as seen
at the so called "Tombs of
the Kings"



The Skull = hill and Grotto of Jeremiah
the two Eye = like openings.

Fig 19. Front of the "Skull Hill,"
near Jeremiah's Grotto. This is

a very hasty sketch representing the appearance
at a time when the light was favourable
for developing the two eyes. See other sketch
(19a)



19

Fig 18. Door of a Sepulchre,
with rolling stone, as seen
at the so called "Tombs of
the Kings";



18

Fig 19. Front of the "Skull Hill,"
near Jeremiah's Grotto. This is
a very hasty sketch representing the appearance
at a time when the light was favourable
for developing the two eyes. See other sketch
(19a)

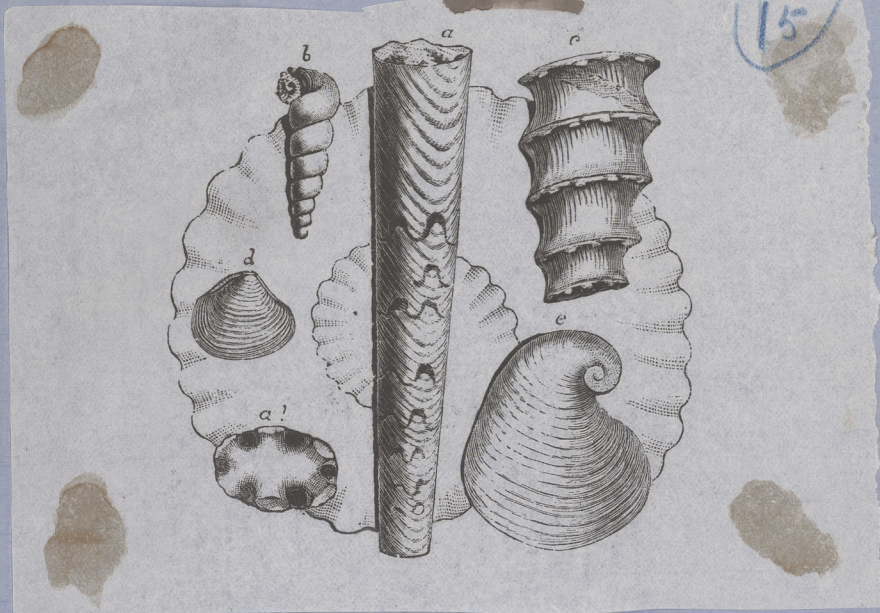


Fig 20. Cretaceous Fossils of Judea
 (a) Baculites anceps, Imk. (a') Cup Section
showing Septum. (b) Furritella adurram, Fraas,
 (c) Verinea Mamillae, Fraas, (d) Craspatella
Rothii, Fr. (e) Ostrea Mermeti, Cq. Background,
 outline of Ammonites Mantellii, Sow.



23 and the Plain of Coele = Syria,
Ly 27. Hermon, from the road
near Mt Lebanon, ~~in early spring,~~
(March 1884)

This cut is I think misplaced in the parcel MS.

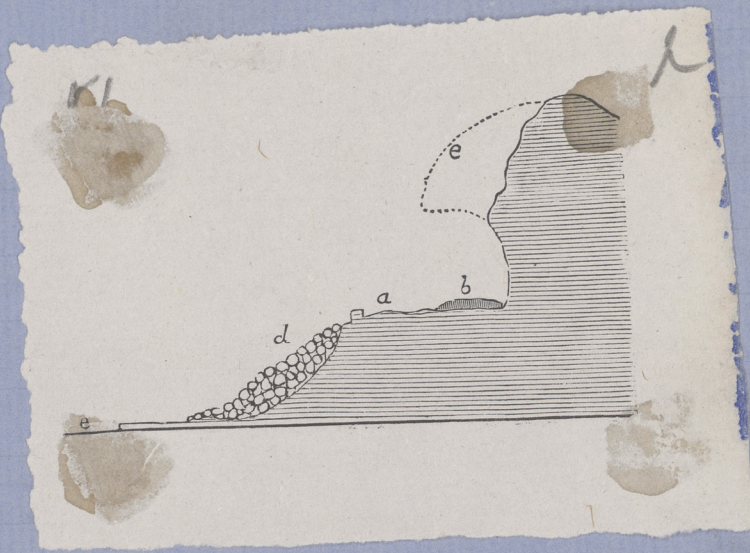


Fig 26. Section of ruined cavern at the top of Wahn el Kelb.

- (a) Bed of road.
- (b) Entrance of floor of cave.
- (c) Possible ancient roof of cave.
- (d) Debris thrown down in cutting the road.
- (e) Level of sea.



Fig 26. Arrow or spear, Wahn el Kelb.
(a) section.



Fig 28. Fragment of Knife and hollow
Scraper, Wahl el Kelb.



Fig 29. Entrance of Cave, Abu el
Blas.

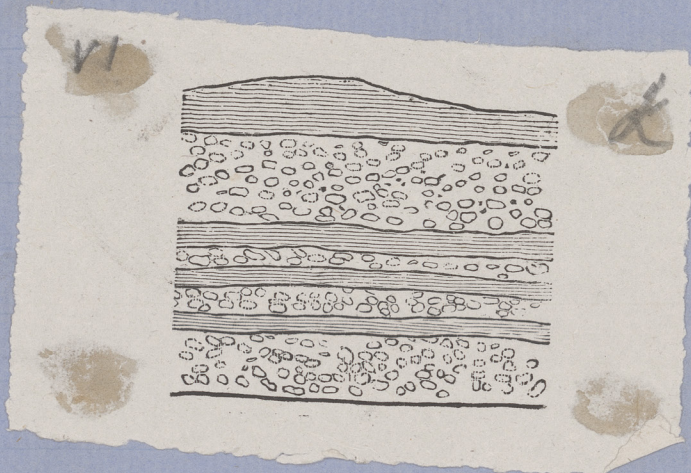


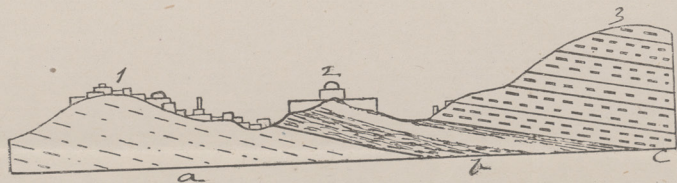
Fig 24. Ancient gravel of Jebel Apsart
near Thebes, with bands of
hardened loam & sand.



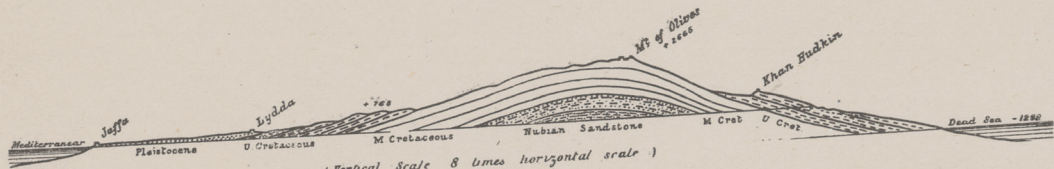
Make this
more faint
& distant

Fig 24.5 Stelae with Flint Chips
at Jebel Apsart.

Cuts and
Middle hills
Chunles
Jemar







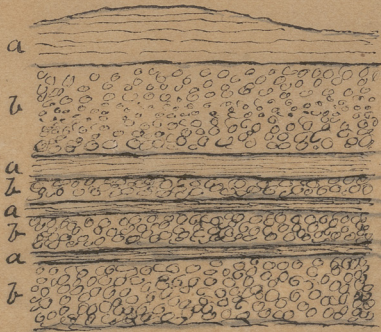




El La. Pyramide de Gizeh.



B. Hottel

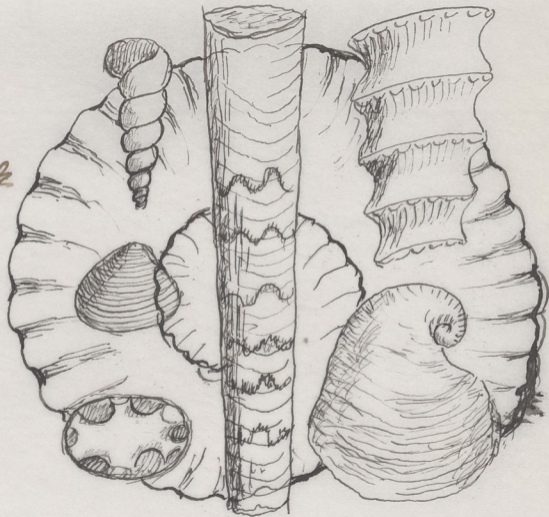


Section of inclined gravel and
sand at Jebel Assart. — Thebes.
(a) Inclined sand.



Fig 21.
Cretaceous Fossils
of Judea.

This cut to
be sent by
mail!
MD









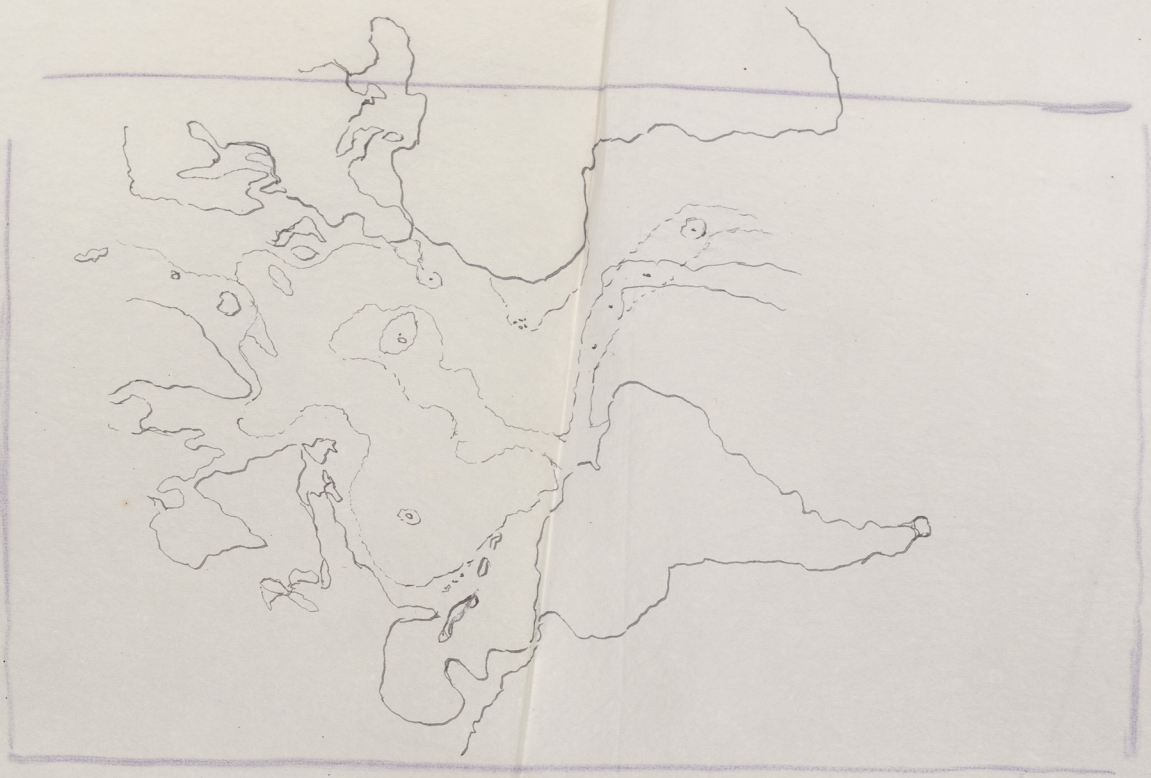
20 June

Subs
out

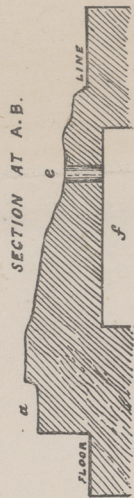
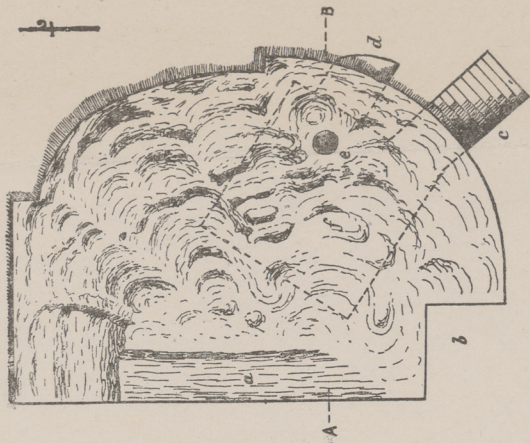


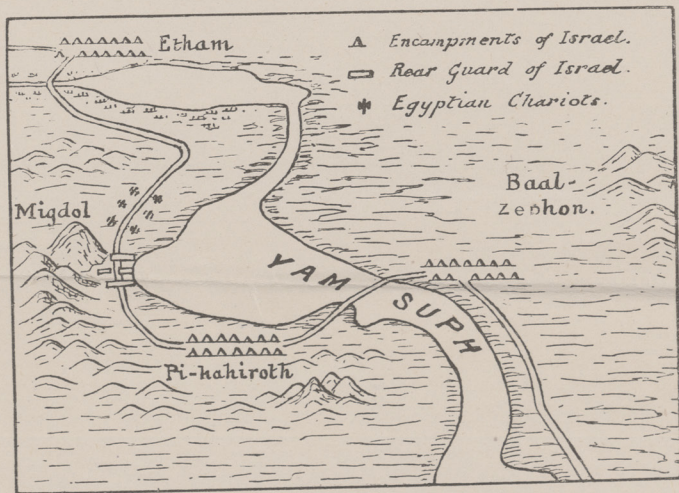
Estuaries











Chap VI

also Lett



in text Chap. II Fig. 33



Terraces in Eocene Limestone above
~~Leol~~ ~~May~~ ^{reservoir}
^{on western}
^{side of}
^{the}
^{Nile}
~~1887~~
~~1897~~

~~Fig 3~~

Hog
Skull & gnt
Antler of Pine.



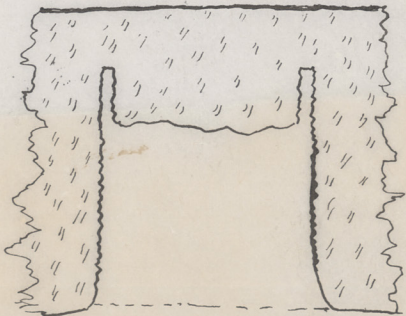
Bucua

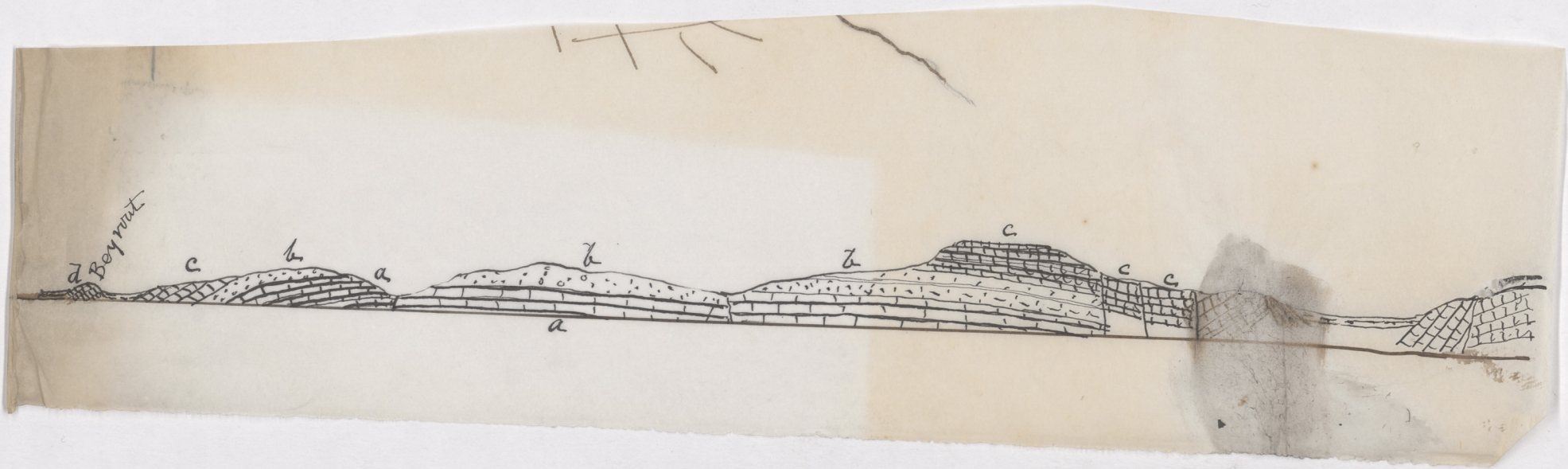
Alonso

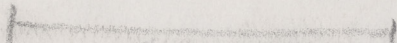
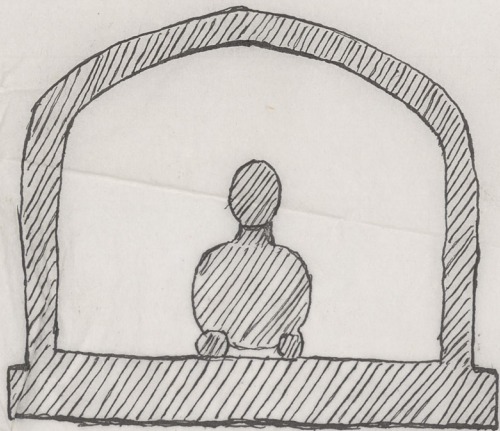
Cerr

Dos

Equis.

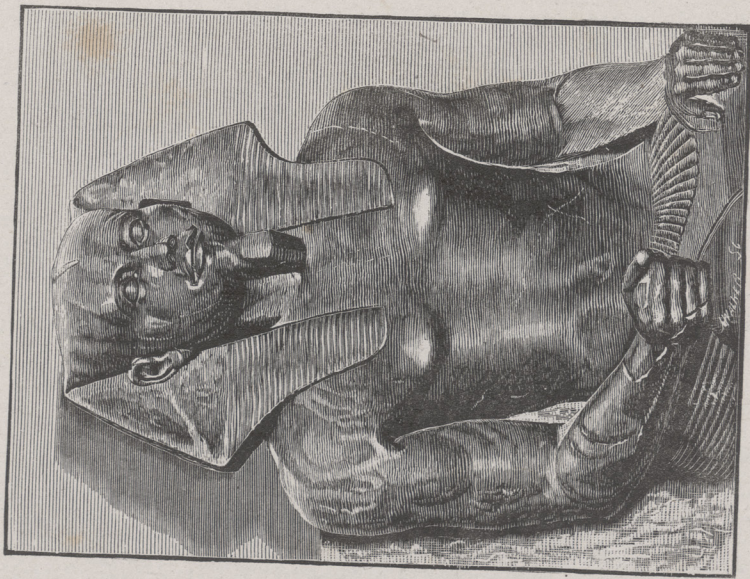






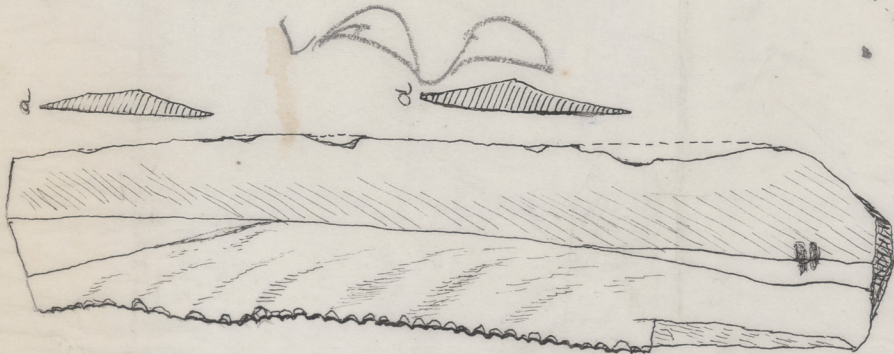
Radius to this

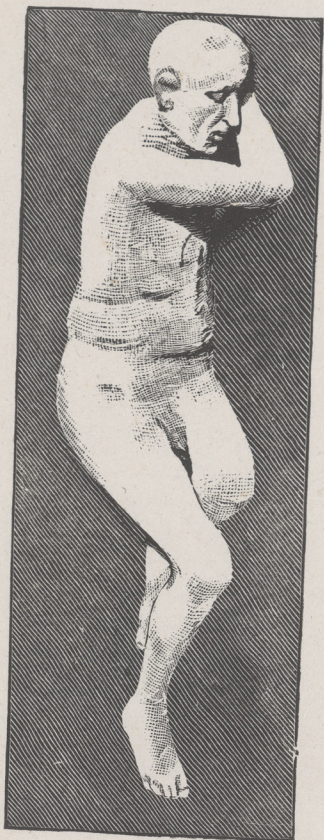
6.5





Reduce to this length

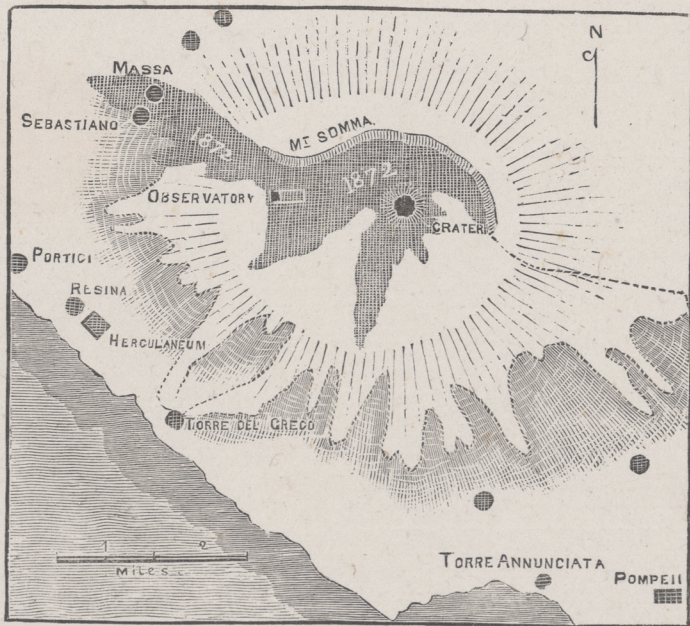


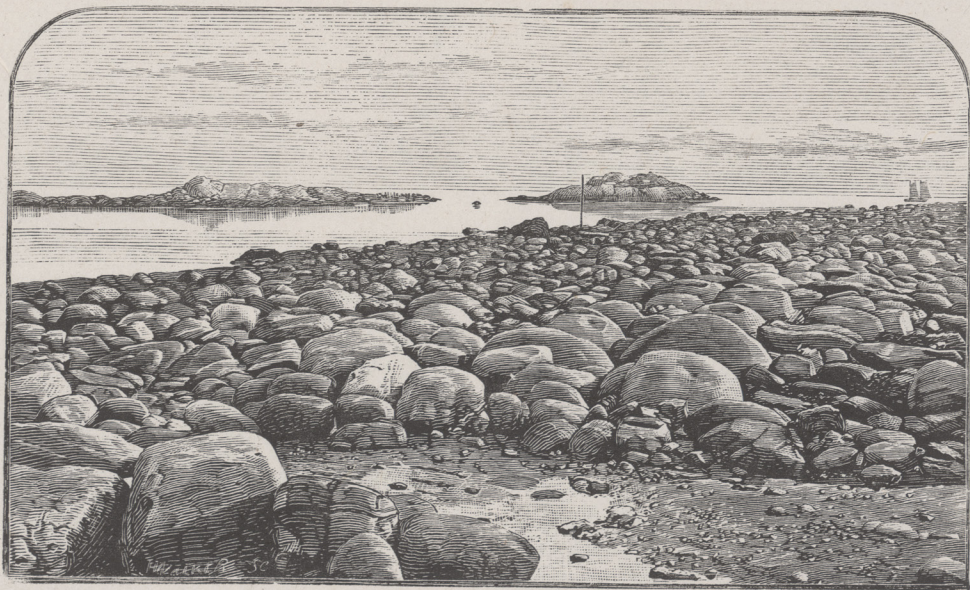


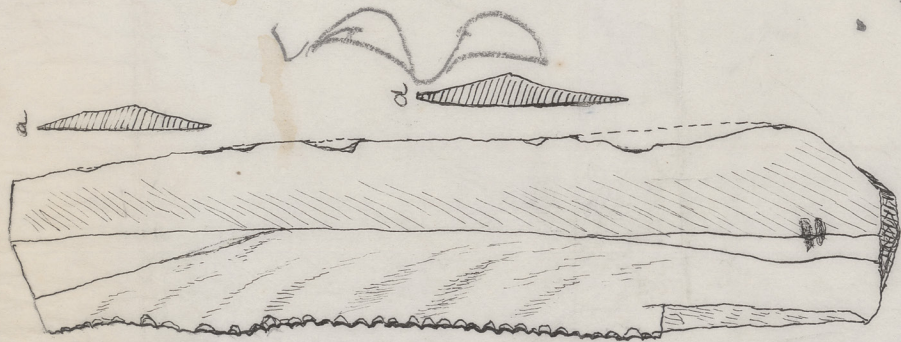




The Printer can bring out the sky
of smoke either dark or light as you may
direct. How









Malacca
917

Frontis piece



Pyramid of Naphra.



Pyramid of Kaphra (Cephren) and ancient Eroded Cliff of Pyr: mid Plateau at Gizeh.
(From a Photograph.)

To face Chap. II



Lower Eocene Limestone + softer beds near the base.

~~Geol Mag 1884~~

~~p 389~~

~~Fig 2.~~

To face Ch. VI



Pass of Mehr el Kelb

Tofac Ch. VII



Seli I

Fig. 1

in text Chap. II

~~I 5~~



Head of

Naphra
(Cephren)

Fig. 2

In Text Chap. II

6

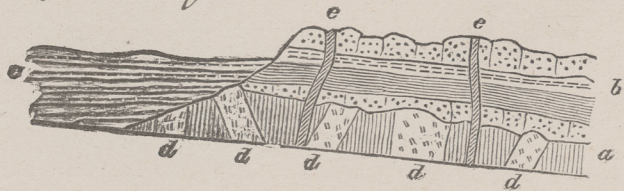


Statue of a Hyksos King

Chap. II

Fig. # 4

~~Crystalline Rocks at Aswan~~
~~Relation of Crystalline Rocks and~~
~~Nubian Sandstone at the First~~
~~Cataract. (a) older crystalline series~~
~~(Laurentian) (b) second Crystalline series~~
~~(Kronian) (c) Nubian Sandstone~~
~~(d) dykes of Granite + Diorite~~
~~(e) dykes of Felsite + Basalt.~~



Geol Mag.

1884

439

Fig. 58.

m. l. v.
Chap. II



Crataceous Sandstone & Marl above Silsiles.

~~Geol Mag~~

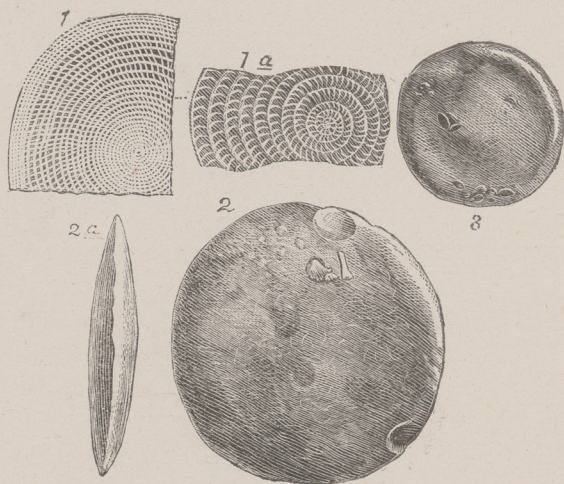
~~1884~~

~~p 389~~

~~Fig 3~~

Fig. 6

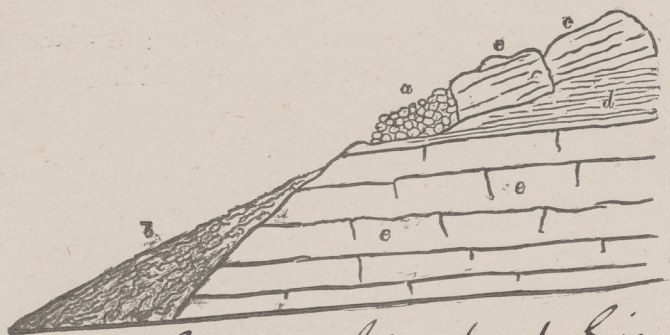
in Lett. Chap. II



Nummulites
Gyzensis

Fig. 88

in text
Chap. II



Raised Brack at Sizoh

- a. Brack
- b. Sand
- c. Brown Limestone
- d. Clay and Marl
- e. Limestone

~~Geol Mag.~~

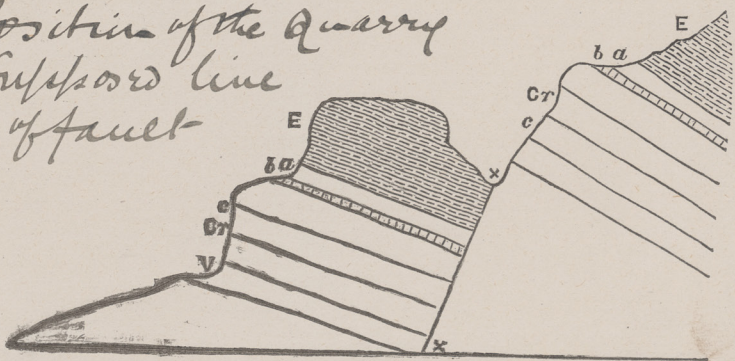
~~1884~~

~~p. 290.~~

~~Right~~

Fig 39

Section at Tebel Ataska, part after
Le Vaillant (E) Eocene (Cr.) Cretaceous
including (a) White chalky Limestone
(b) Red & brownish Marl (c) Hard Limestone
& Dolomite with Hippurites, Obolus, etc
(v) Position of the Quarry
(xx) supposed line
of fault



~~Geol Mag~~

~~1884~~

~~Fig 4~~

~~# 390~~

Fig. 9.10
in text Chap. II



Mokattam Terrace from the Nile

~~Leol Mag~~

~~1884~~

~~1890~~

~~Fig 2~~

Fig. 113



Mutah
Ch. III

Meneptah.

Fig 12



Migdol.

Fig. 13

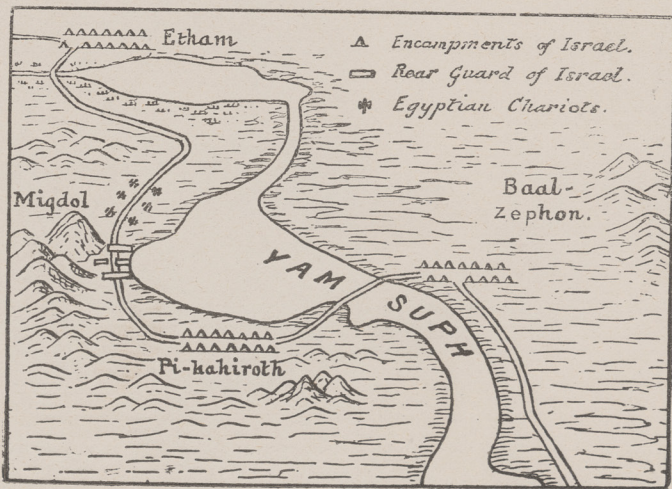
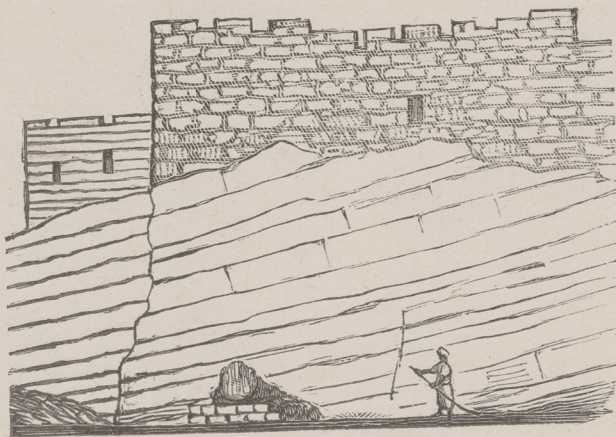
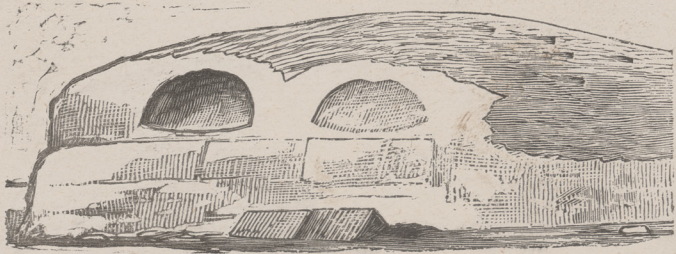


Fig. 17



Cliff & city wall.

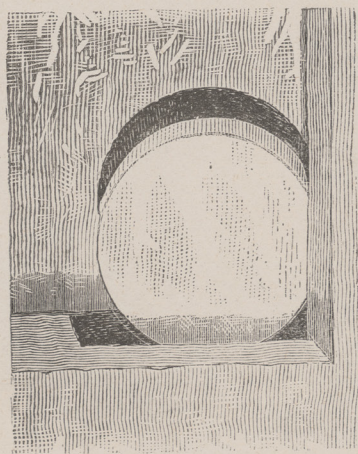
Fig. 18



Front of the
Stue Hill.

~~18~~

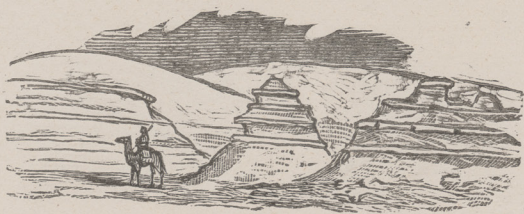
Fig. 19
20



The door of a sepulchre.

22

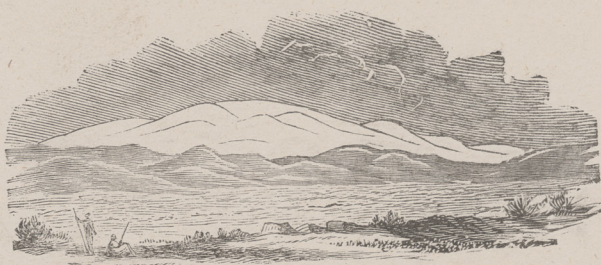
23



~~ancient~~ Dead sea deposits.

Fig. 23

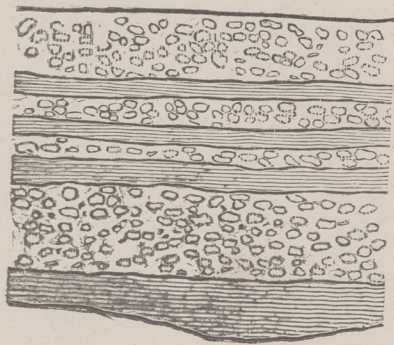
24



Harmon & the Plain of
Coke-Syria

24

25



Section of ^{ancient} gravel.
at Shebs

Section of Course at
Nash's Well

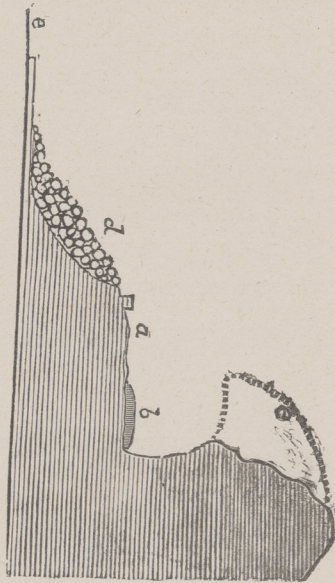
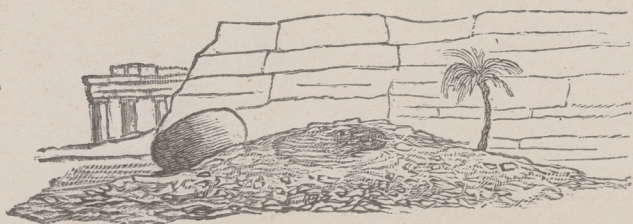


Fig. 26

27

25/27

26



Atelier with flint chips
at Thebes

Fig. 29
30



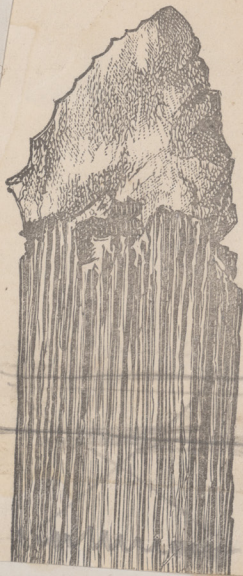
The Cave of Mr Elias.



23 La Pyramide de Gizeh.



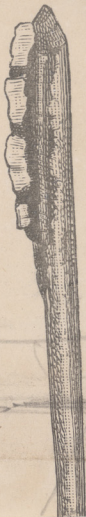
FIG. 6.



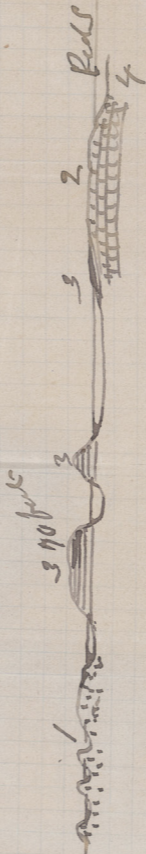
1 Stone Roof, Sta Barbara
California

2 Tamaritan Roof of flint
Chips
After Putnam

FIG. 4.



Med



1 Old shells in sand 2 Red sea shells

3 Old Nile Deposits

4 Chert or chert beds

Latter 281



Wasy tumlat

From the Printing-office of
WYMAN & SONS,
74, 76 St. Queen Street,
W.C.
PROOF, 7/5 /84.

~~PLI~~
V
Syria

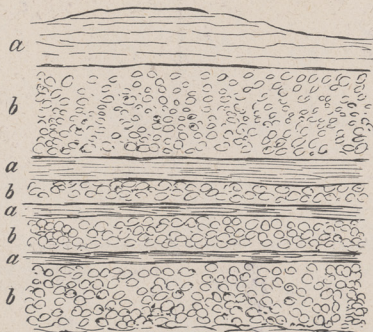


Fig 1. SECTION OF INDURATED GRAVEL AND SAND AT
JEBEL ASSART—THEBES.

(a) Indurated Sand. (b) Gravel.

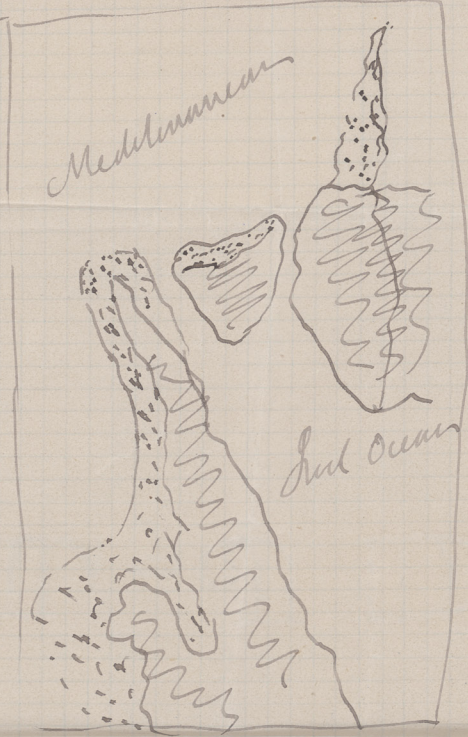


Fig 3. ENTRANCE OF CAVERN AT ANT ELIAS.

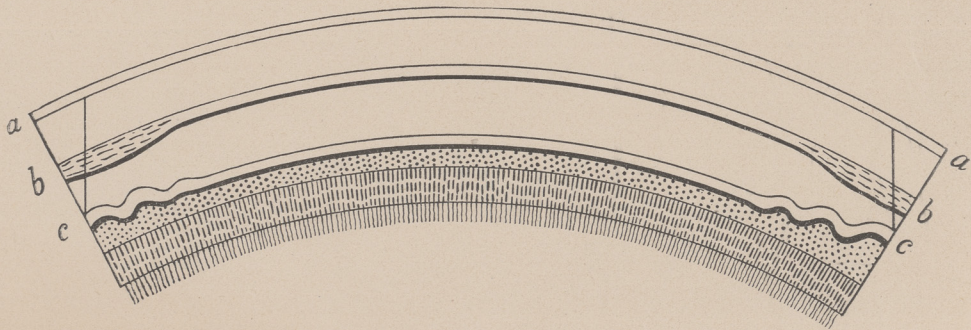
100
The great fault in
the beds on the East side in
effect of it is to lay to the
surface the volcanic granites
(See Diagram) This great fault
extends all the way to
the Gulf of Mexico with
Wax shale and the
dead sea and at the
Jordan valley & Collyria
Whether this is a great fault
accumulated by the action of
time but the volcanic faults as
also stated seem to be certainly
ancient







Suite P 115-



07.

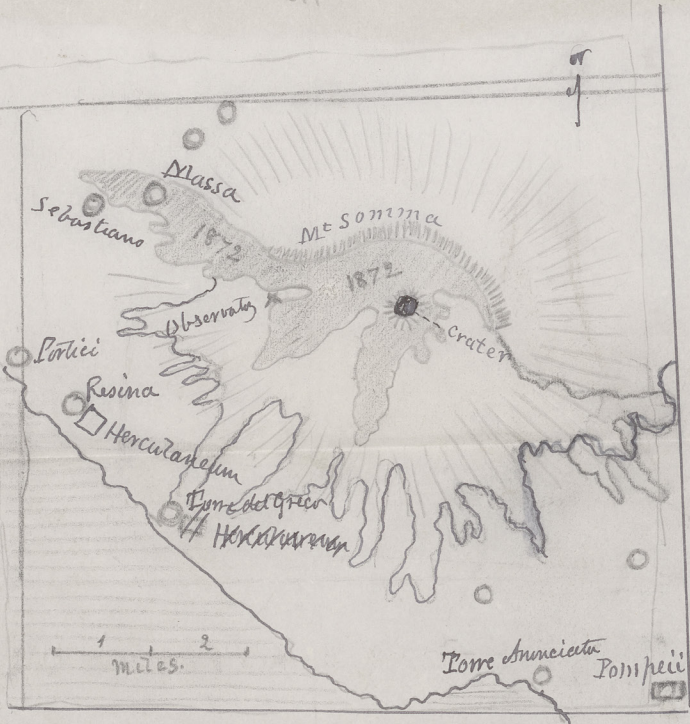
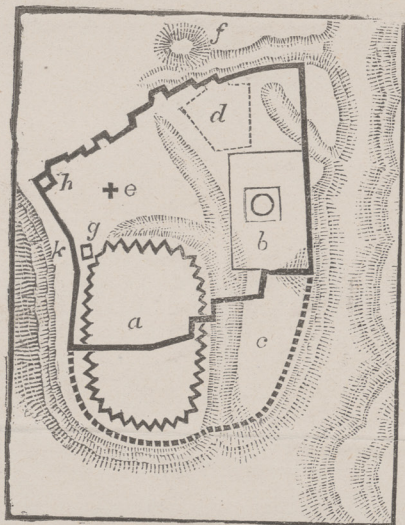
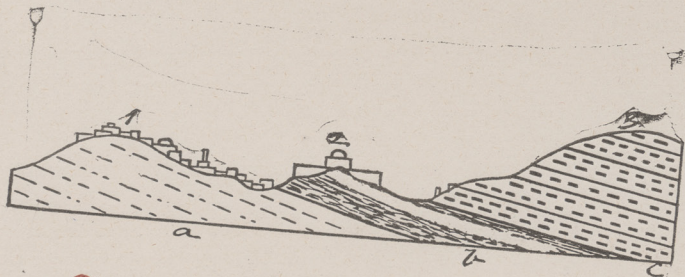


Fig 15



Plan of Jerusalem
(taken at the time of the
4th century A.D.)

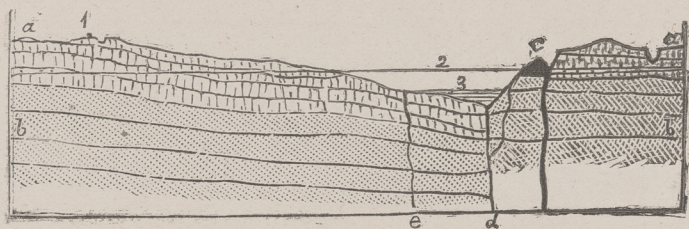
Fig 16



Section of the site of
Jerusalem

a — b — c —

21
22



Section

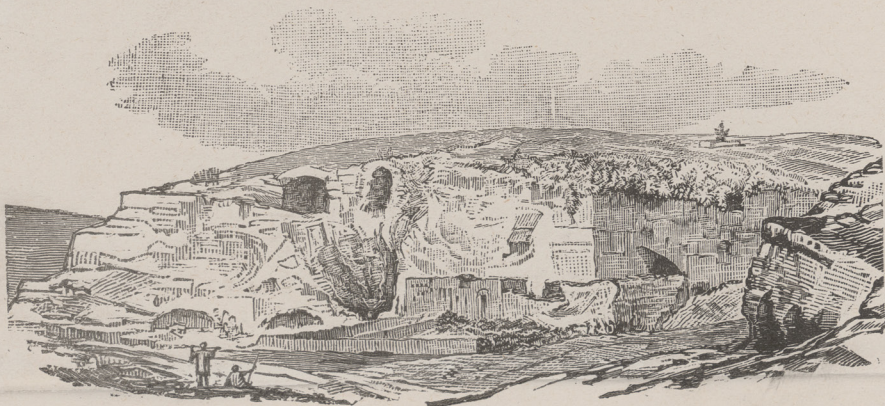
From

~~Jordan~~ to the hills
of Moab

~~Dead Sea.~~

Fig. 18a

19



The Skull Hill



J. H. WALKER,

(ESTABLISHED 1850.)

WOOD ENGRAVER AND DESIGNER,

126 ST. JAMES STREET,

(Opposite the Post Office.)

MONTREAL