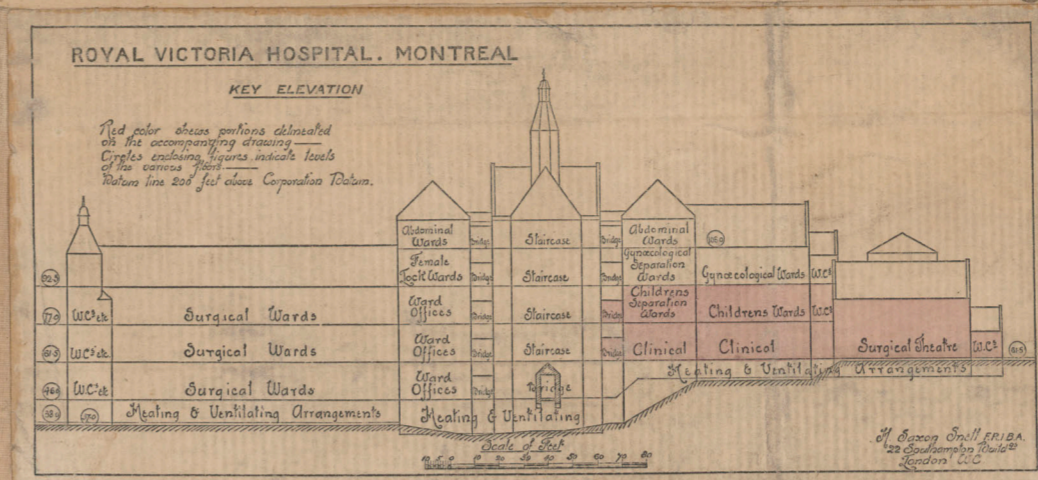


ROYAL VICTORIA HOSPITAL MONTREAL.

February 1892.

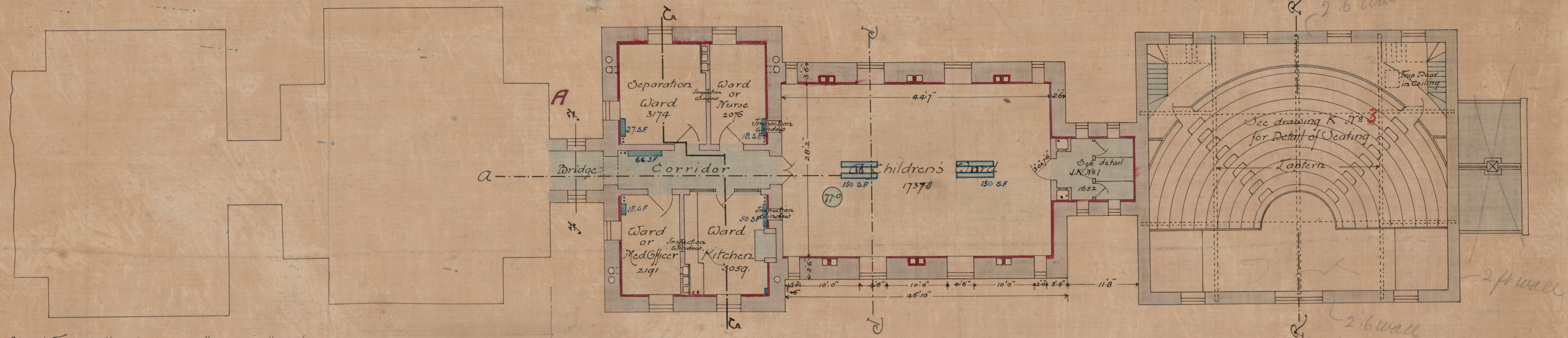


H J K

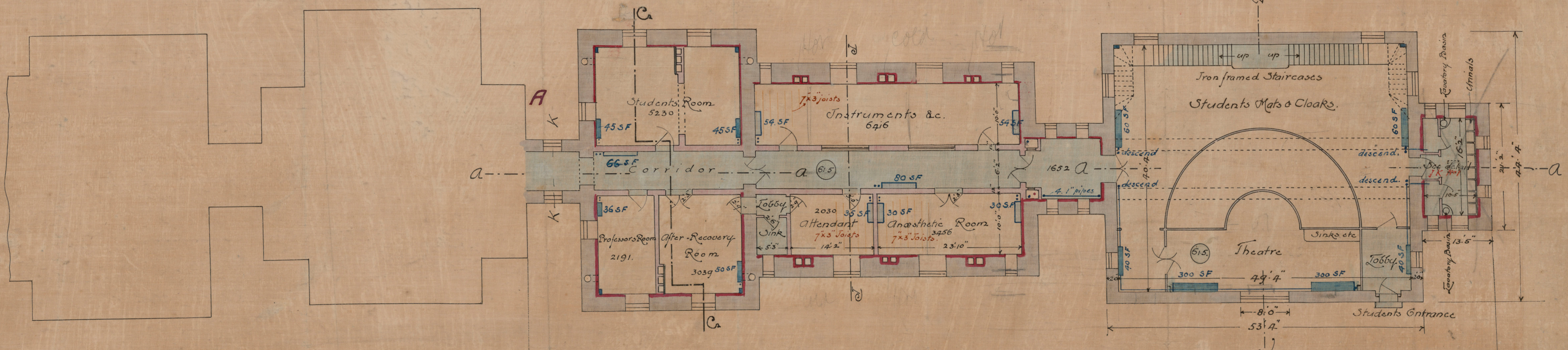
DRAWING N^o 3

Drawing No 3^a

Note - The portion west of A is only included in the Present Contract.



Notes - Figured dimensions generally are in the clear exclusive of grounding and plaster
Doors are figured net, sizes between rebates & to be on these floors 7'0 high unless otherwise described
Tables are shown thus
Figures in circles thus show the levels above datum
Red lines denote Hot Water Services
Blue " " Heating
Dashed " " Cold Water Services
Blue figures - surface of radiators in sup. feet.
Black " " contents of rooms in cub. feet
R.I.T. - Rolled Iron Joists



Part 1st Floor Plan.

Ground Plan.

H. SAXON SNELL, F.R.I.B.A.
ARCHITECT

22 SOUTHAMPTON BUILDINGS
LONDON W.C.

J. R. RHIND, ASSISTANT ARCHITECT

Montreal H.C.F.

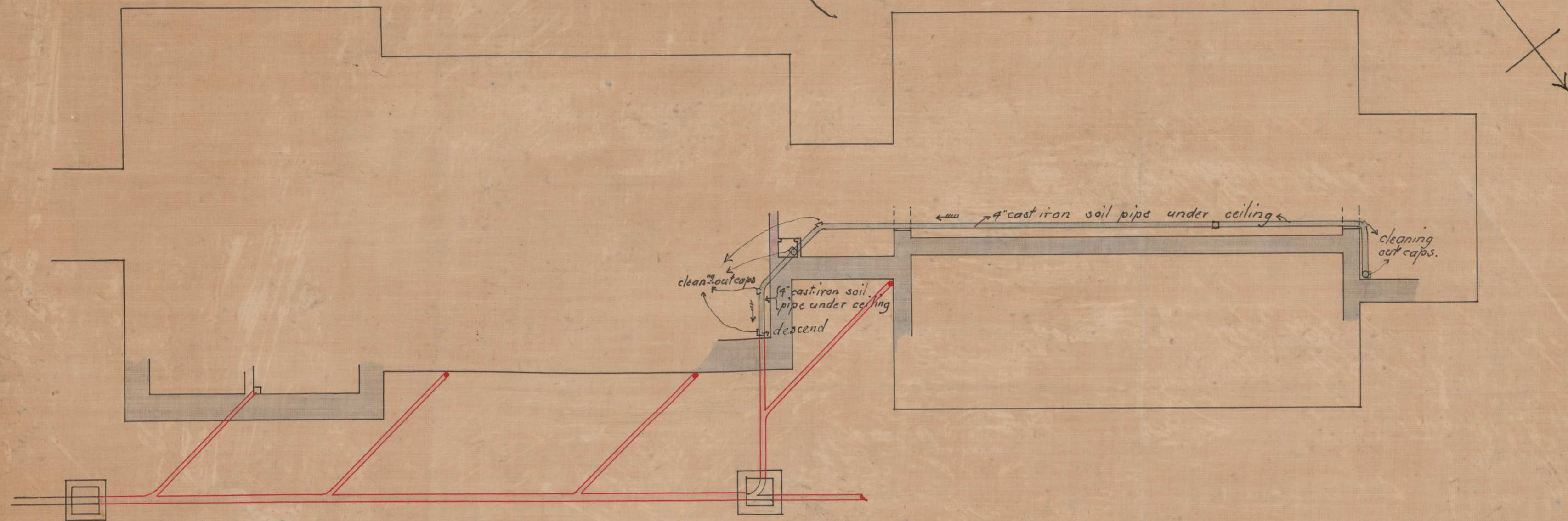
Scale 10 feet to an inch

ROYAL VICTORIA HOSPITAL
MONTREAL.

March 1892

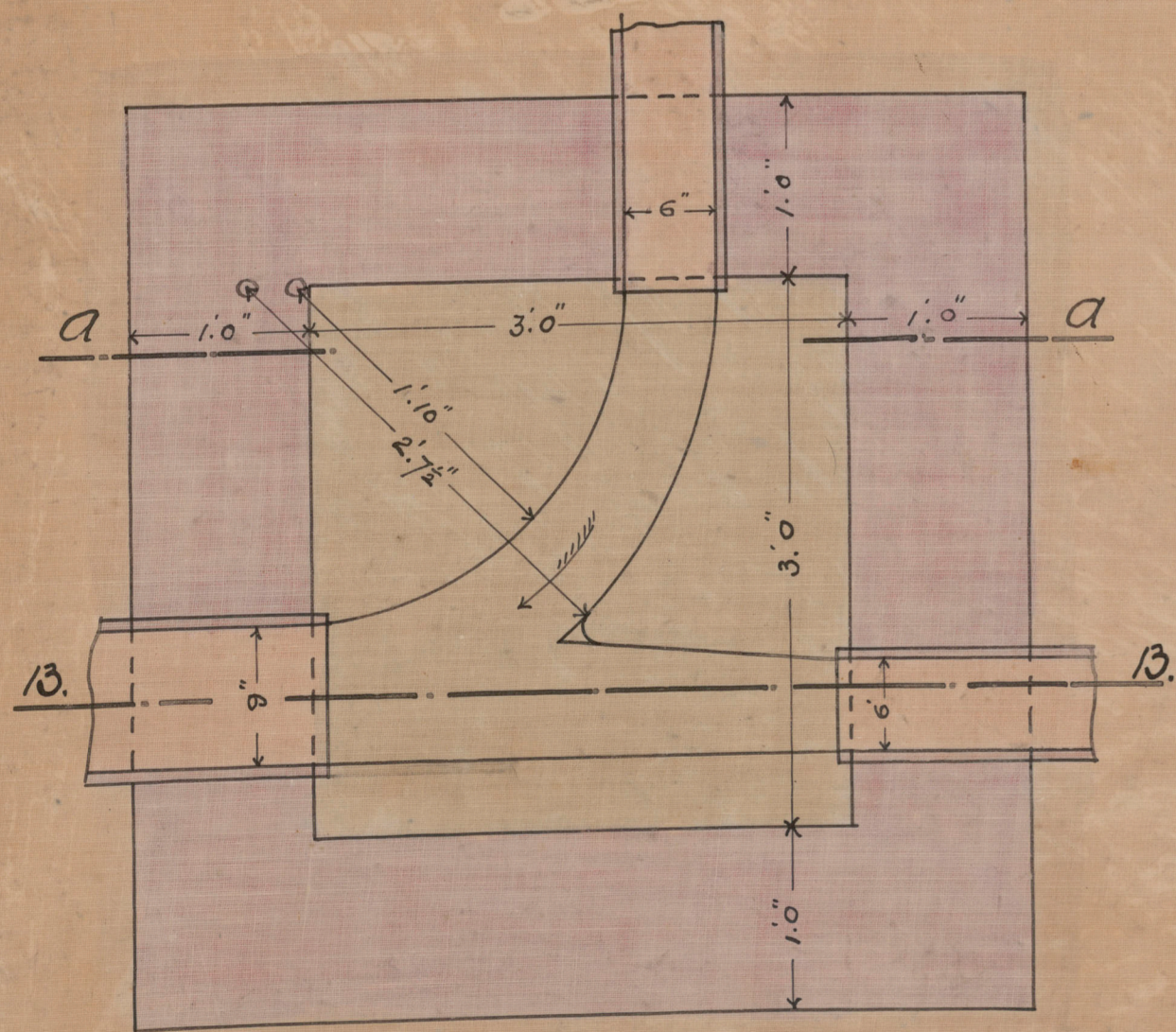
A
DRAWING NO 3

Details of Manhole &c

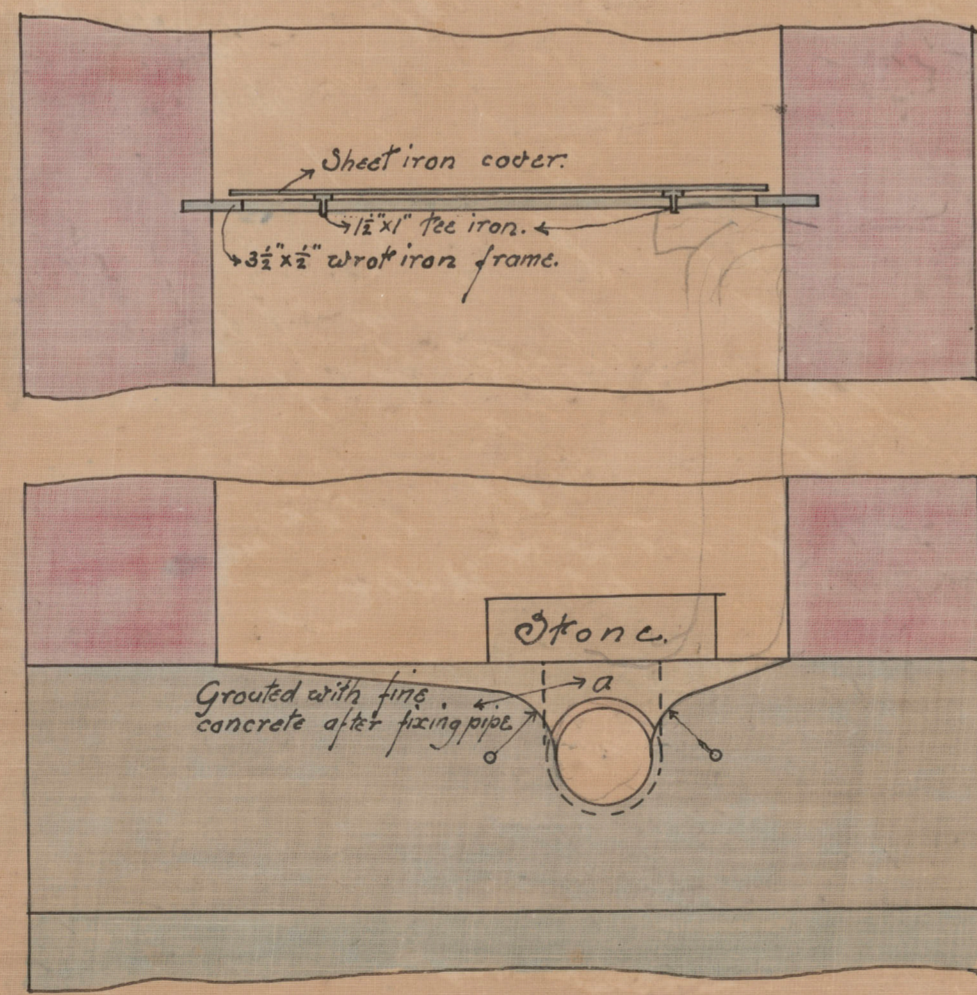


Part Basement Plan of Blocks
showing course of soil pipes.

Note: For details of castings of cleaning-out caps generally see drawing B No. 14.

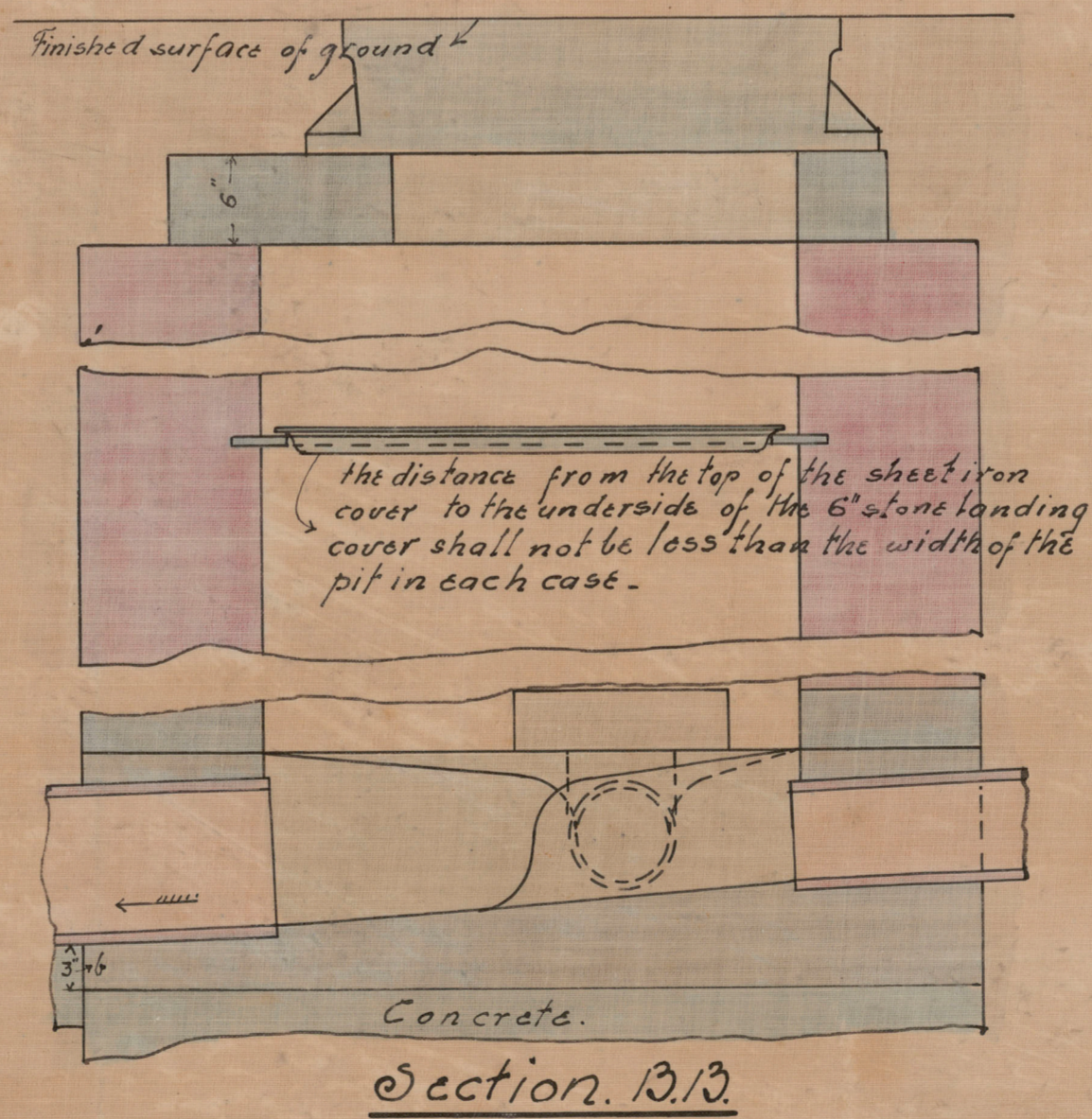


Plan



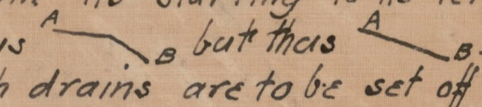
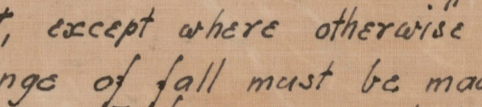
Section a-a

General Details of Manholes



Section B.B.

Notes.

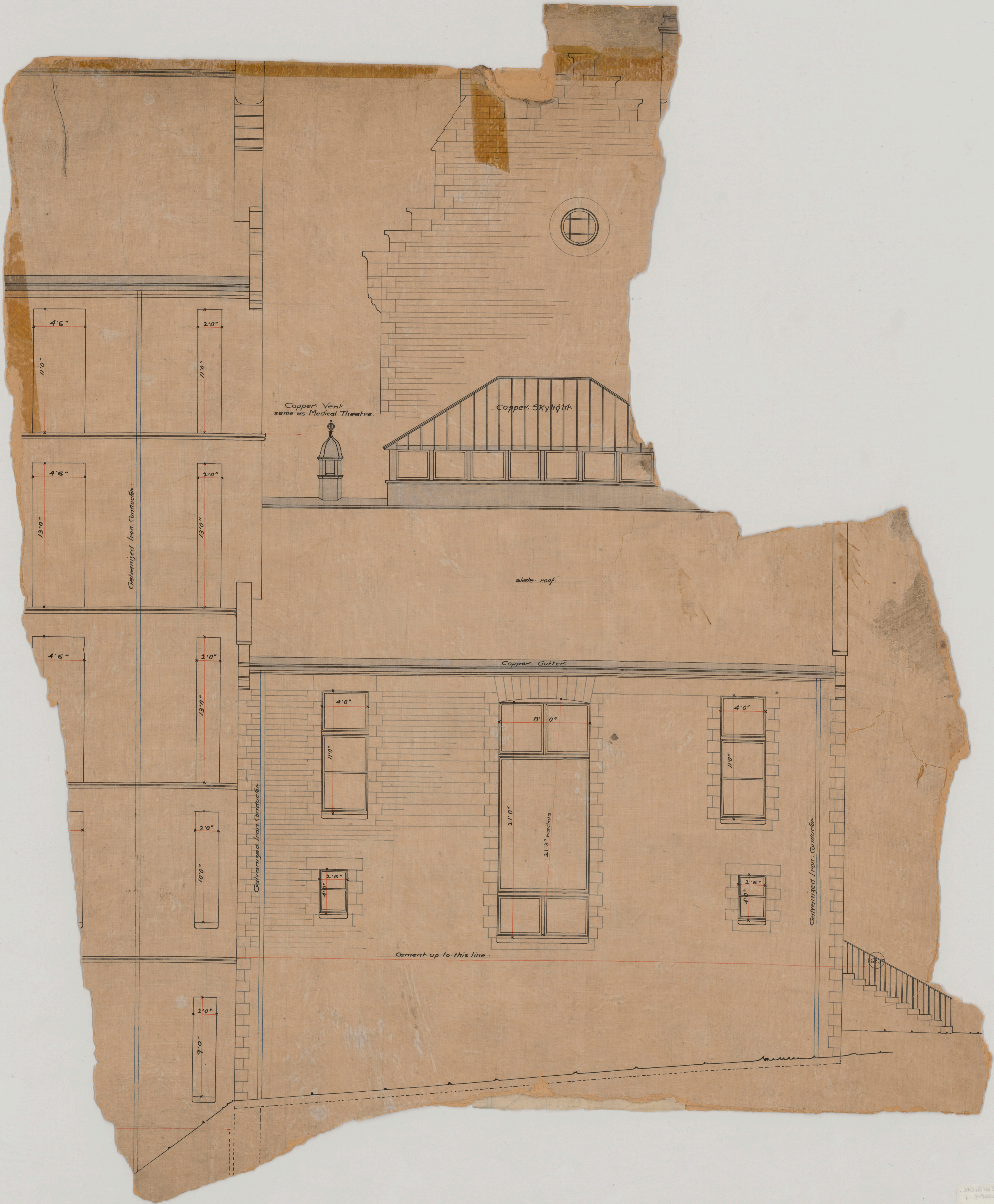
The bottoms of the manholes are to be carefully set out & molded to detail by a plasterer, & set in position before the sides of the pits are built.
They are to be formed into shape with coarse granite chippings and portland cement and covered at once with fine granite chippings & portland cement thick.
The materials are to be thoroughly mixed together while dry and wetted with as little water as possible - the water to be sprinkled on through the rose of a watering pot, and the mass well rammed and beaten into the required shape with wooden discs of proper diameters and finished to a fine surface with the trowel.
None of the chippings of the lower course is to be larger than can pass through a sieve with a $\frac{1}{4}$ mesh nor those in the upper finishing coat larger than can pass thro' a mesh of 8 to the inch.
Each bottom to be begun & completed in one operation without cessation.
The level 'a' (2' above the top of highest inlet pipe) in all cases determines the height of the channel bottoms. The thickness of the channelling at the lowest point (b) is to be never less than 3 inches.
The channels in all cases to fall 1" in foot.
The brickwork sides of each pit are to be of hard stocks in cement and are not to be built until the bottoms are thoroughly set.
The levels of the bottoms of the manholes & drains generally are not shown on the drawings, but will be determined by the Assistant Architect with especial reference to the peculiarities of the site & climate, the following rules must however be observed. Each length of drain must be laid (except where otherwise shown on drawings) in a straight line & with an uniform fall from its starting to its terminating point. Pipes for example from A to B are not to be laid thus  but thus 
Branch drains are to be set off at an angle of 45° from the drain with which they connect or intersect, except where otherwise shown on the drawings.
No change of fall must be made between any two manholes.
Iron covers & frames as shown on sections A.A. and B.B. to be provided & fixed in the pits at a depth of not less than 4.0 from the finished surface of ground, so that if necessary the space above them may during the winter months be filled in with earth or other substance and thus keep the frost from the drains.
Manhole covers to be Waller & Co's oval manhole covers 27" x 24" with wood blocks.

Scale 10 feet to an inch
Scale to details 1 1/2" to an inch.

H. SAXON SNELL, F.R.I.B.A.
ARCHITECT
22 SOUTHAMPTON BUILDINGS
LONDON, W.C.

J. R. RHIND, ASSISTANT ARCHITECT
Montreal.

H.C.F.



Shell - RVH, SURGICAL
 Medical Theatre - 1
 10

Shell - RVH, SURGICAL
 Medical Theatre - 1
 10

ONTARIO
ONTREAL

in floor
see

Copper Vent.
same as Medical Theatre.

Scuttle.

Copper Gutter.

slate roof.

Copper Gutter.

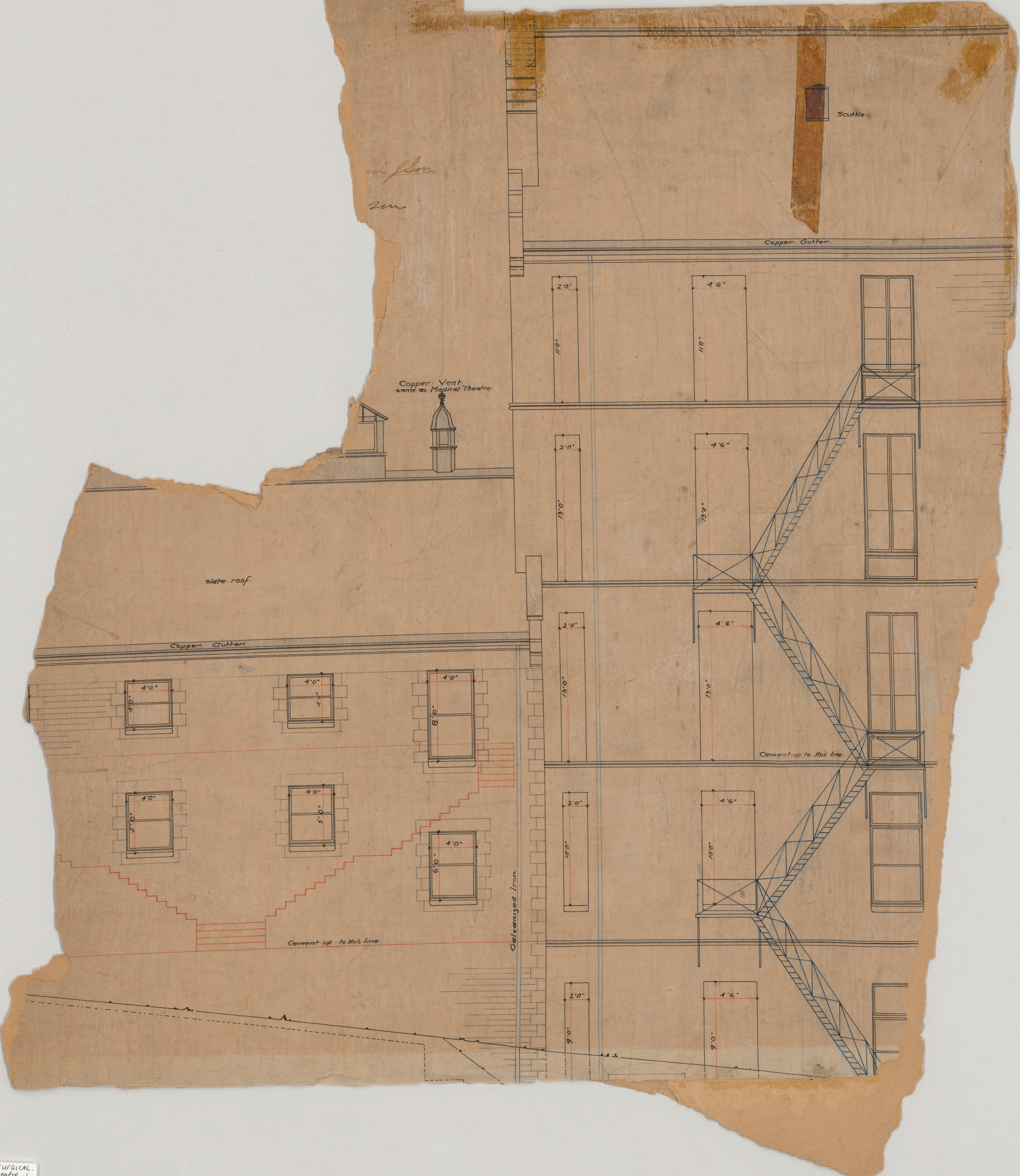
Cement up to this line.

Cement up to this line.

Galvanized Iron.

Shell. RVH SURGICAL.
Medical Theatre - 1
39

Shell. RVH SURGICAL.
Medical Theatre - 1
40



ROYAL VICTORIA
MON

DRAWING NO

Detail of Ventilator

Scale 1/2"

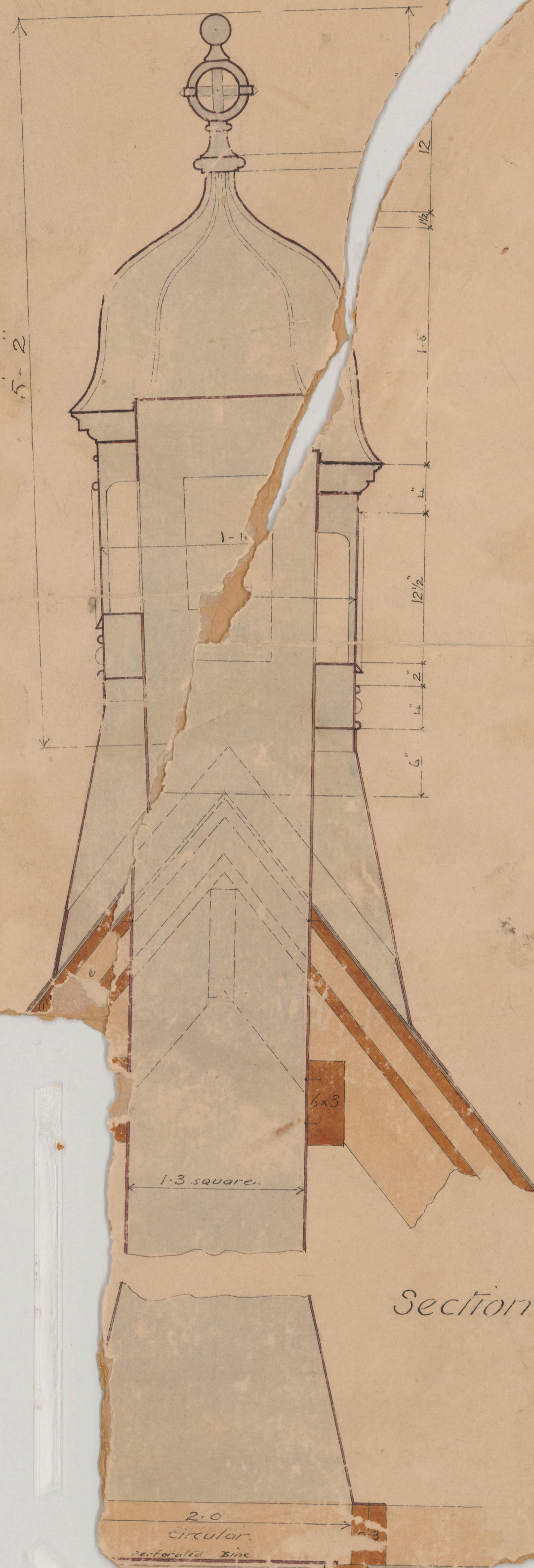


ROYAL VICTORIA HOSPITAL,
MONTREAL.

55. D-E

Detail of Ventilator

Scale = 1/2"

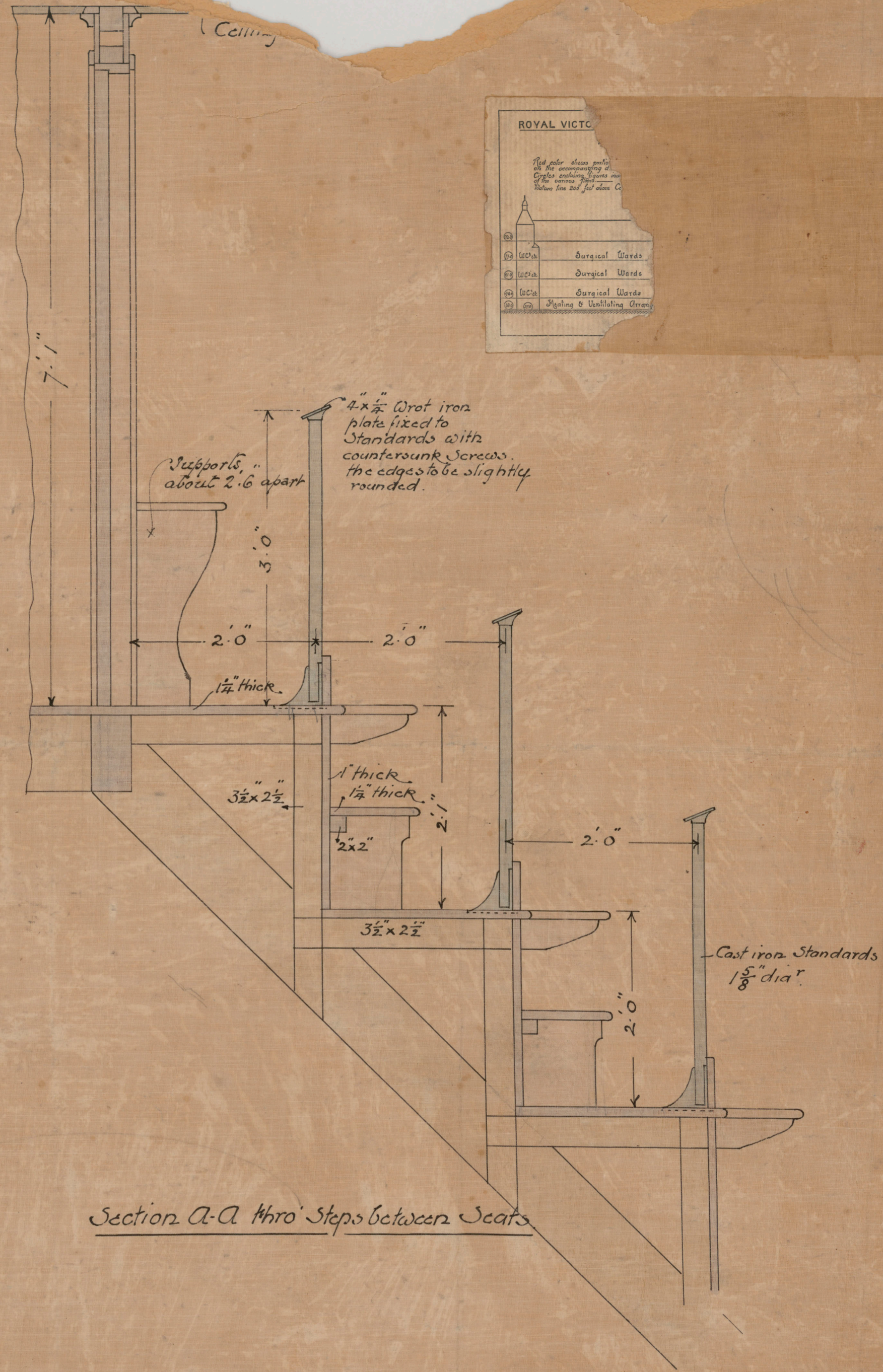
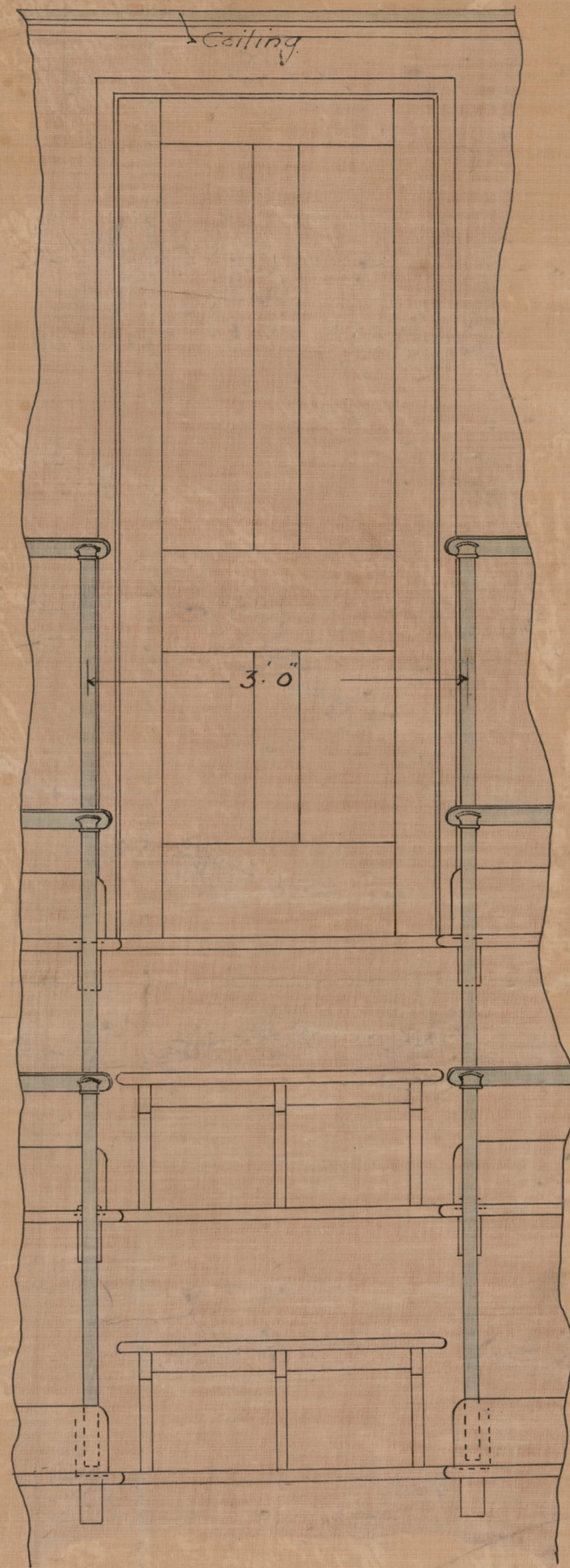
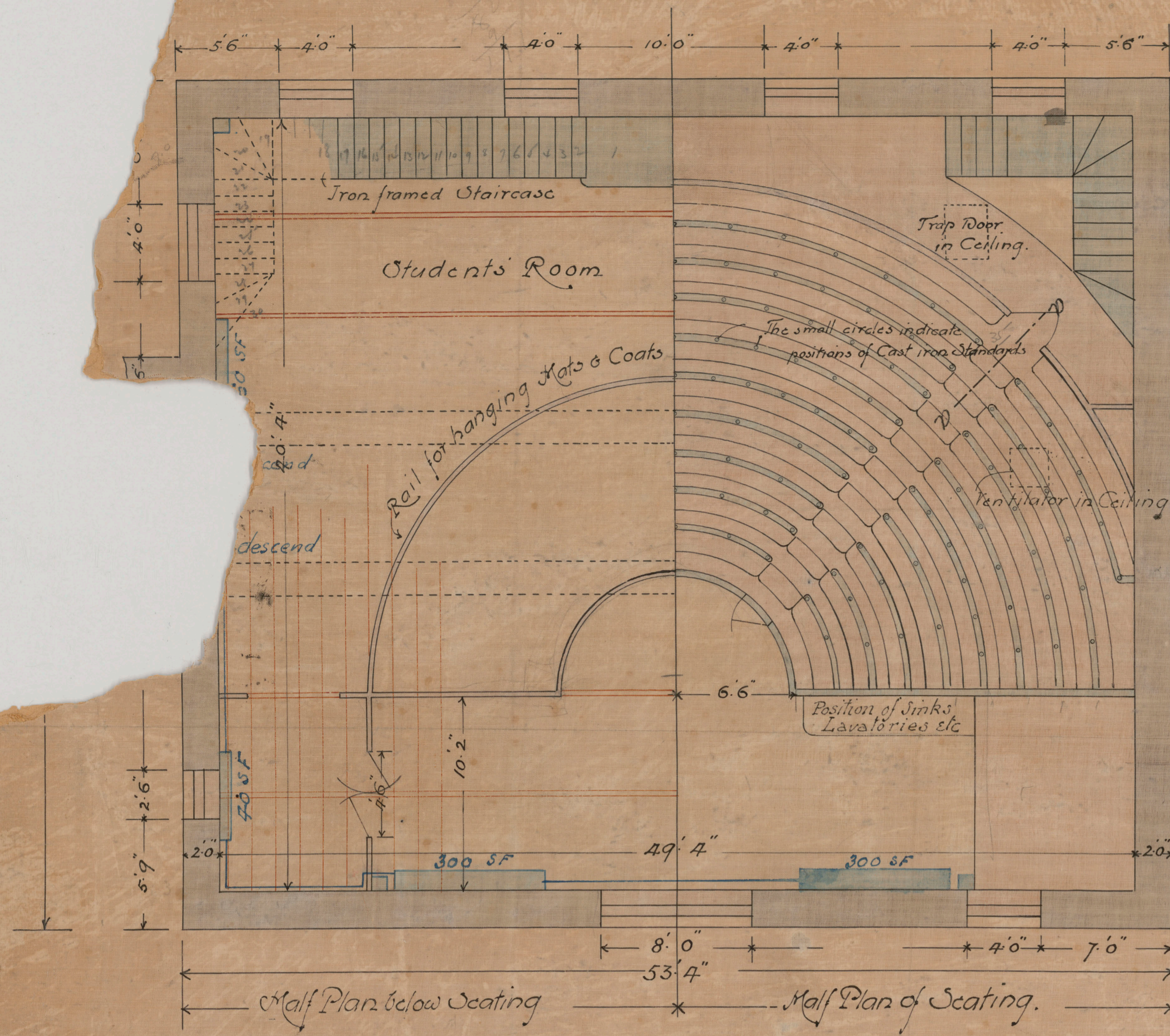


H. SAXE

22 5

ROYAL VICTORIA HOSPITAL
MONTREAL

Detail of Surgery



ROYAL VICT

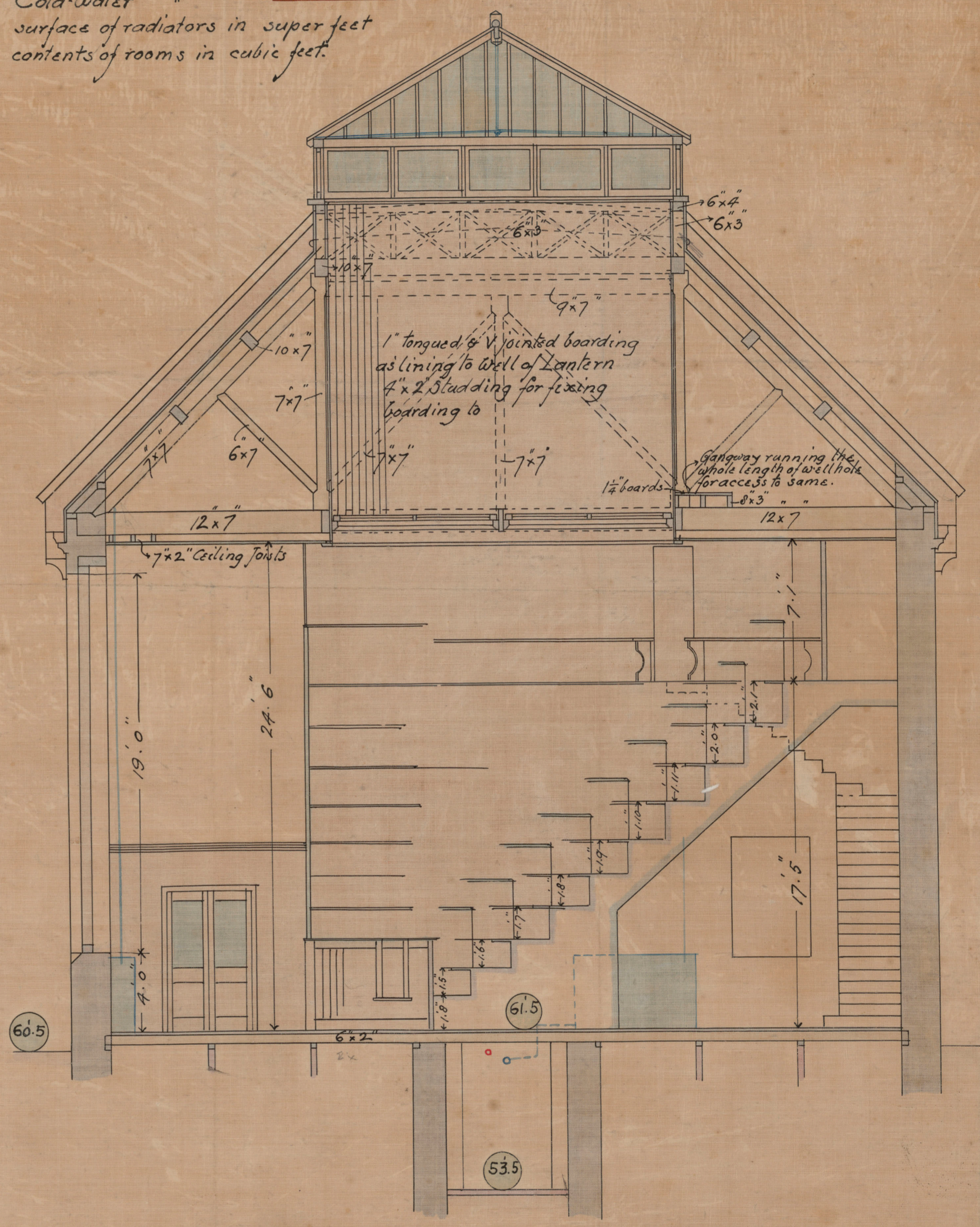
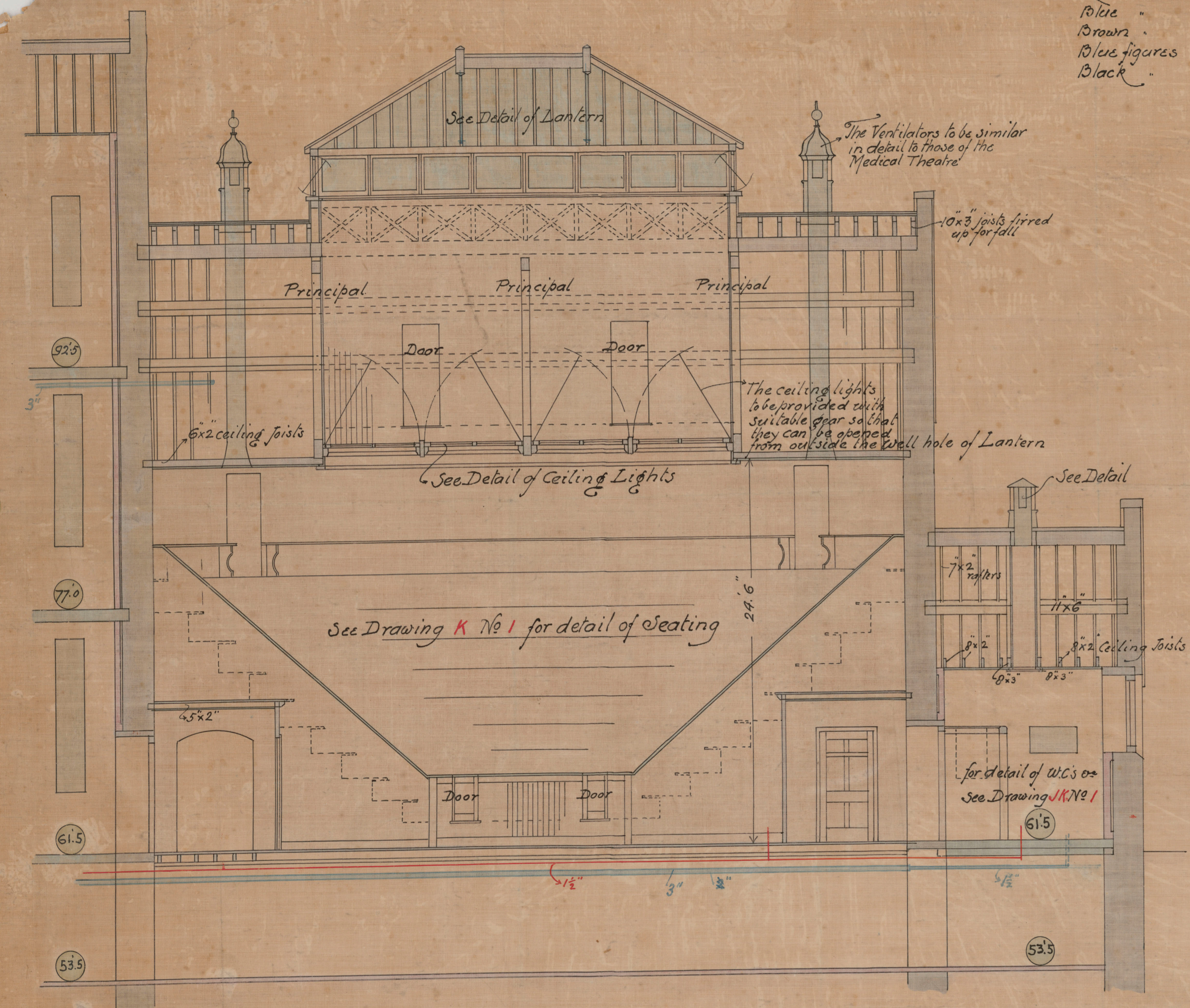
| | |
|---|---------------------------|
| 1 | Cast Iron Standards |
| 2 | Cast Iron Seats |
| 3 | Cast Iron Sinks |
| 4 | Cast Iron Lavatories etc. |
| 5 | Cast Iron Ventilator |

Scale to Plan 5 feet to an inch
10" Details 1 inch to a foot.

H. SAXON SNELL
ARCHITECT
22 SOUTHAMPTON BUILDING
LONDON W C
J. R. RHIND, ASSISTANT ARCHITECT.
Montreal 1106

February 1897

Notes:
 Figures in circles thus 61.5 show the levels above datum
 Red lines denote Hot-water services
 Blue " " Heating " "
 Brown " " Cold-water " "
 Blue figures = surface of radiators in super feet
 Black " = contents of rooms in cubic feet.



Section on line A-A

Note.
 The Section A-A is brought forward at Ground Floor 61.5 level only in order to show the entire arrangement of seating

Section on line R-R

Scale 5 feet to an inch.

H. SAXON SNELL FRIBA
 ARCHITECT
 22 SOUTHAMPTON BUILDINGS
 LONDON W.C.
 J. R. RHIND, ASSISTANT ARCHITECT
 Montreal