

ROYAL VICTORIA HOSPITAL MONTREAL.

Details of Urinals & to Surgical Theatre.

JK

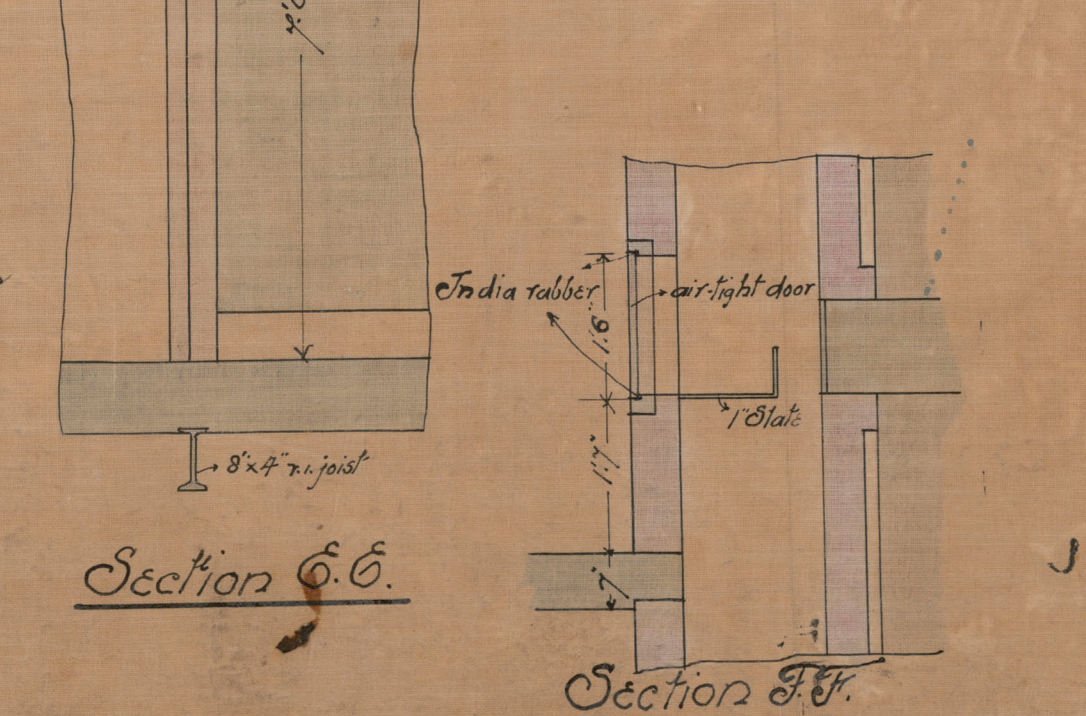
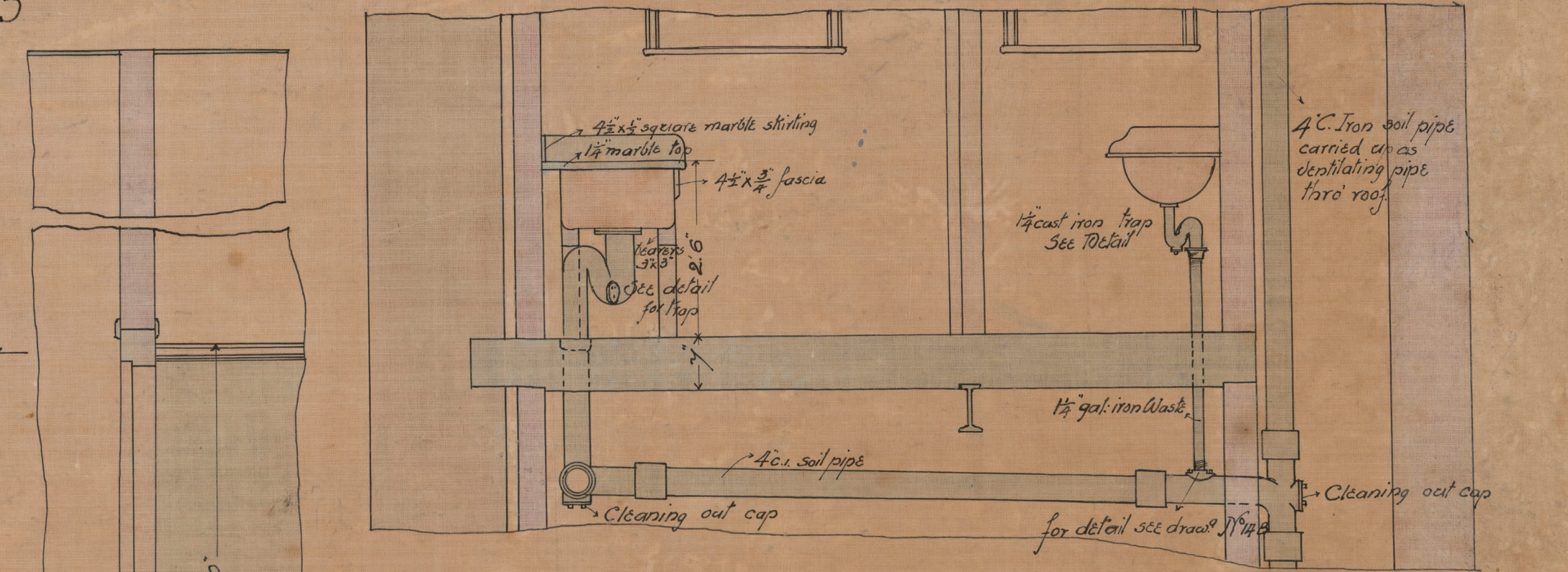
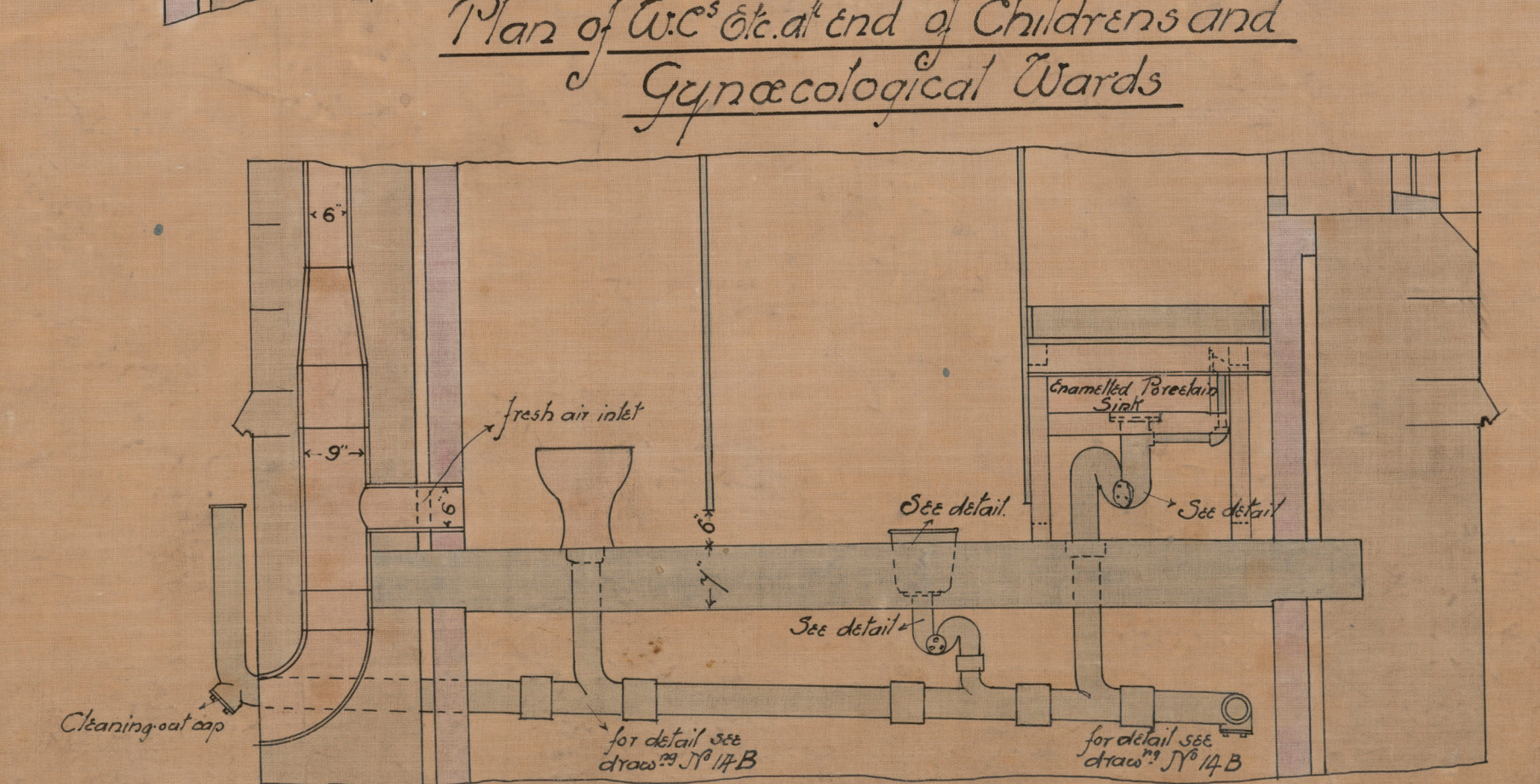
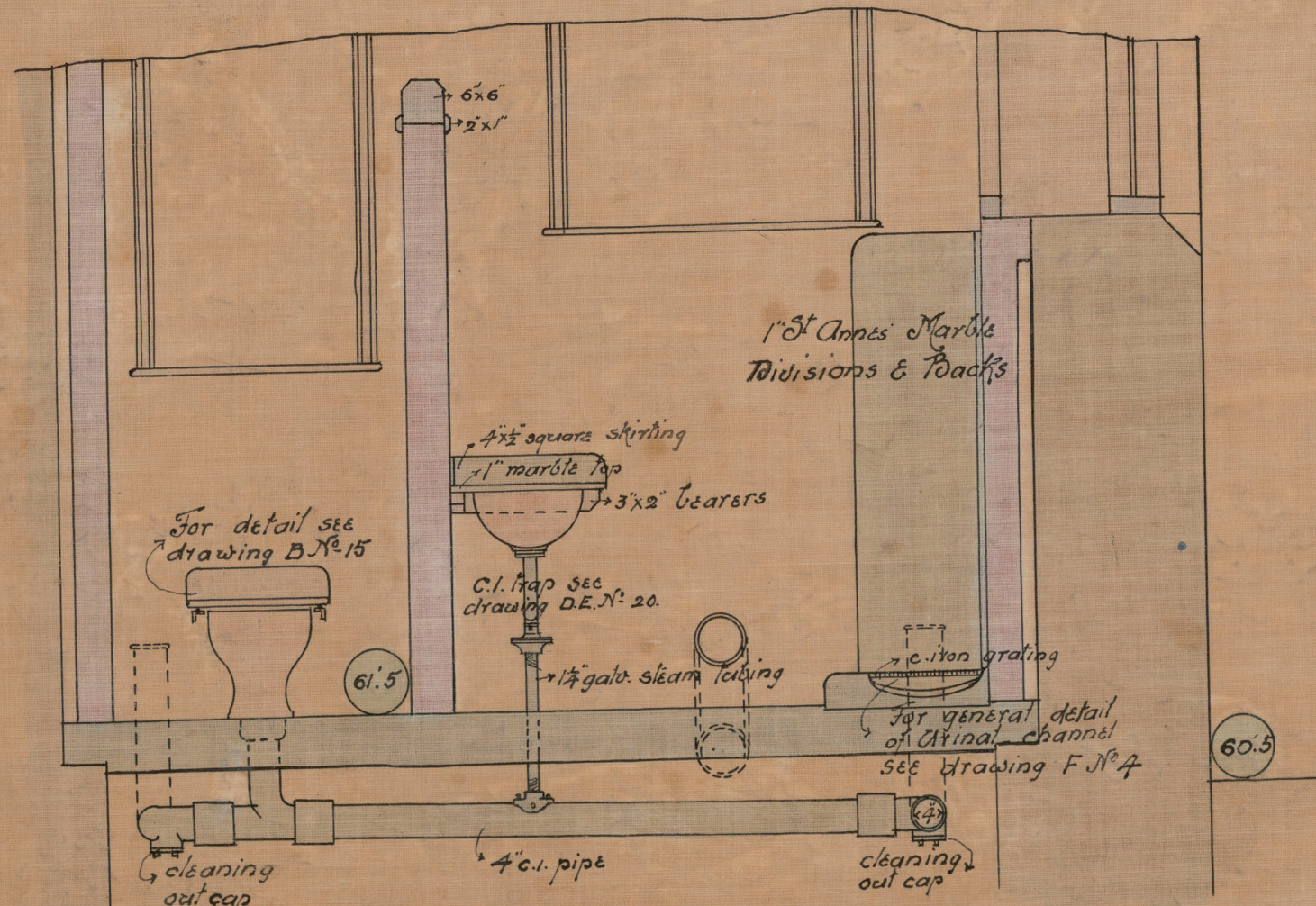
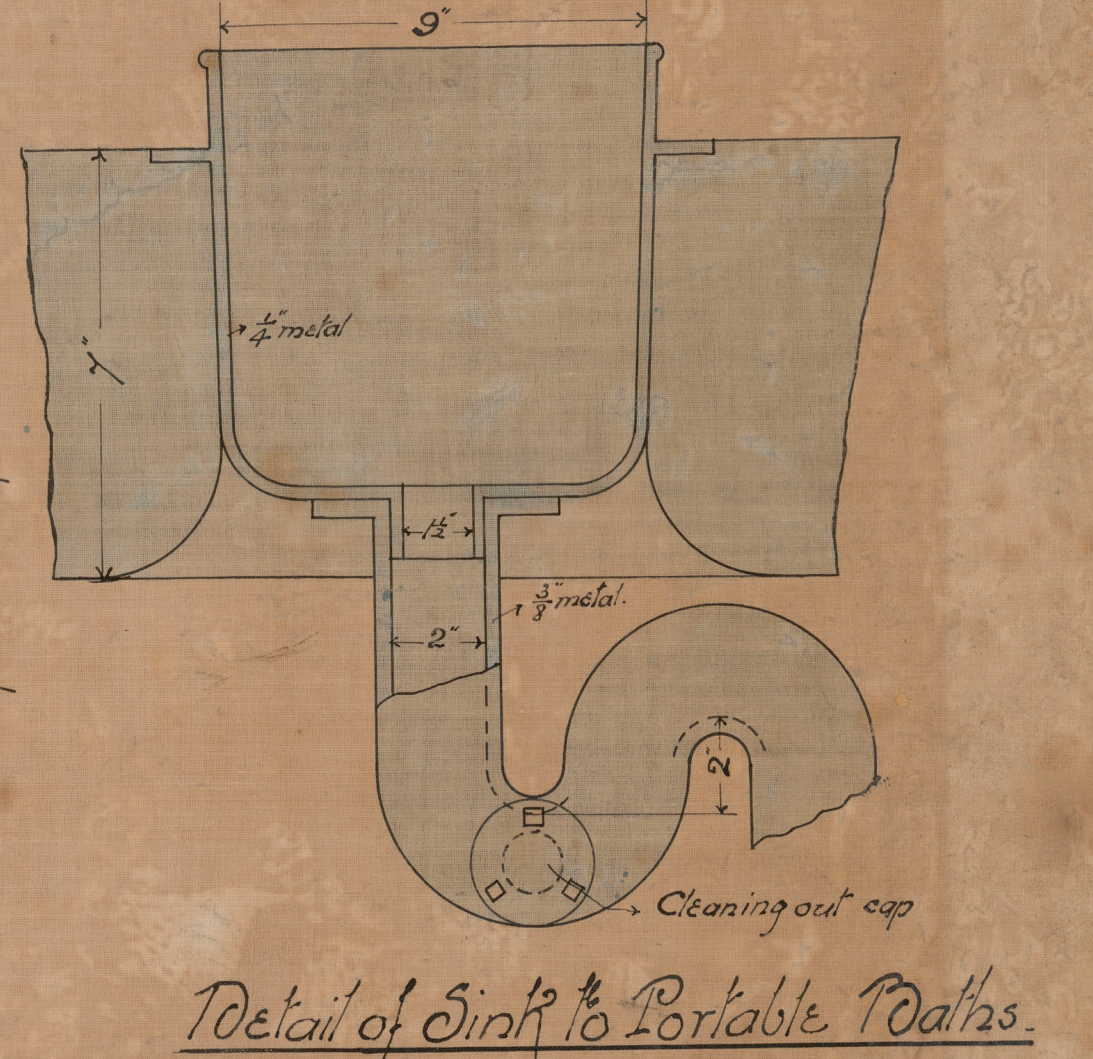
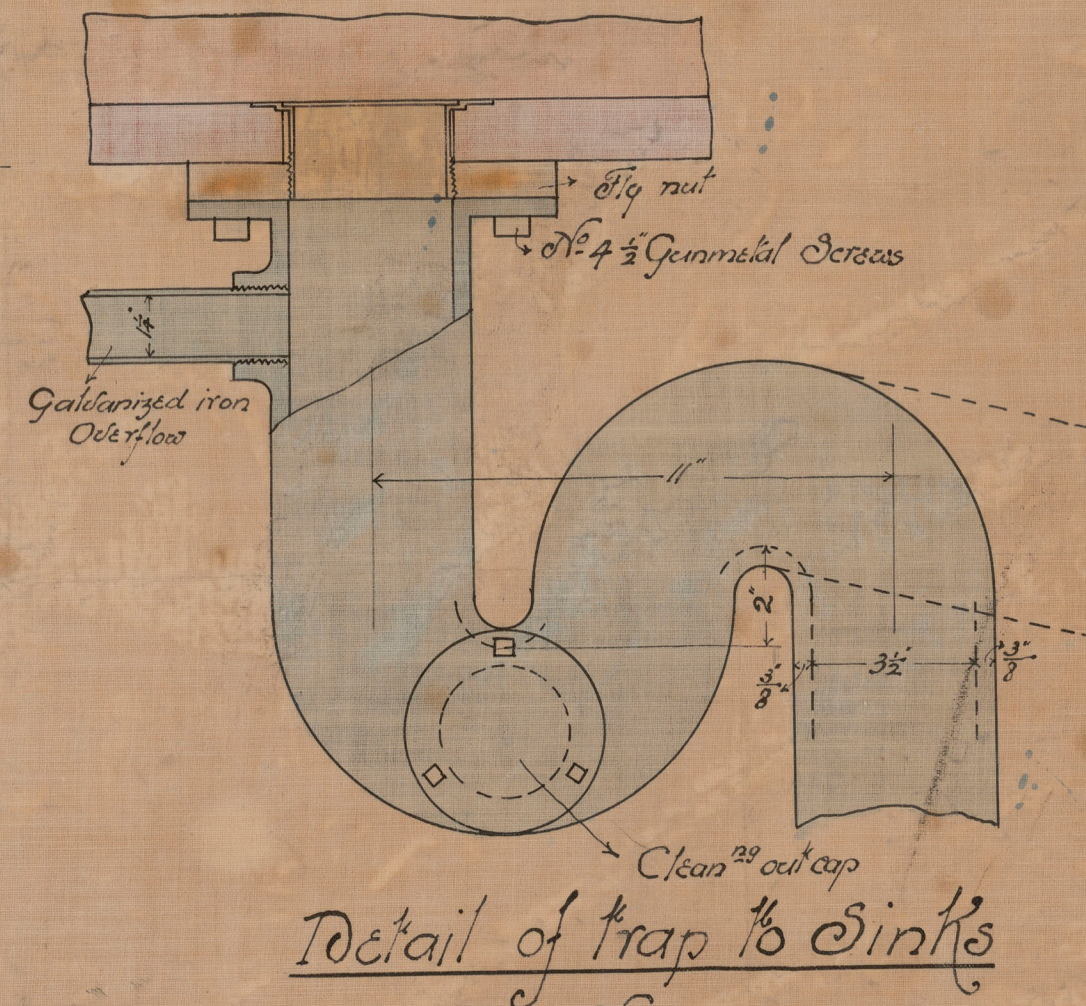
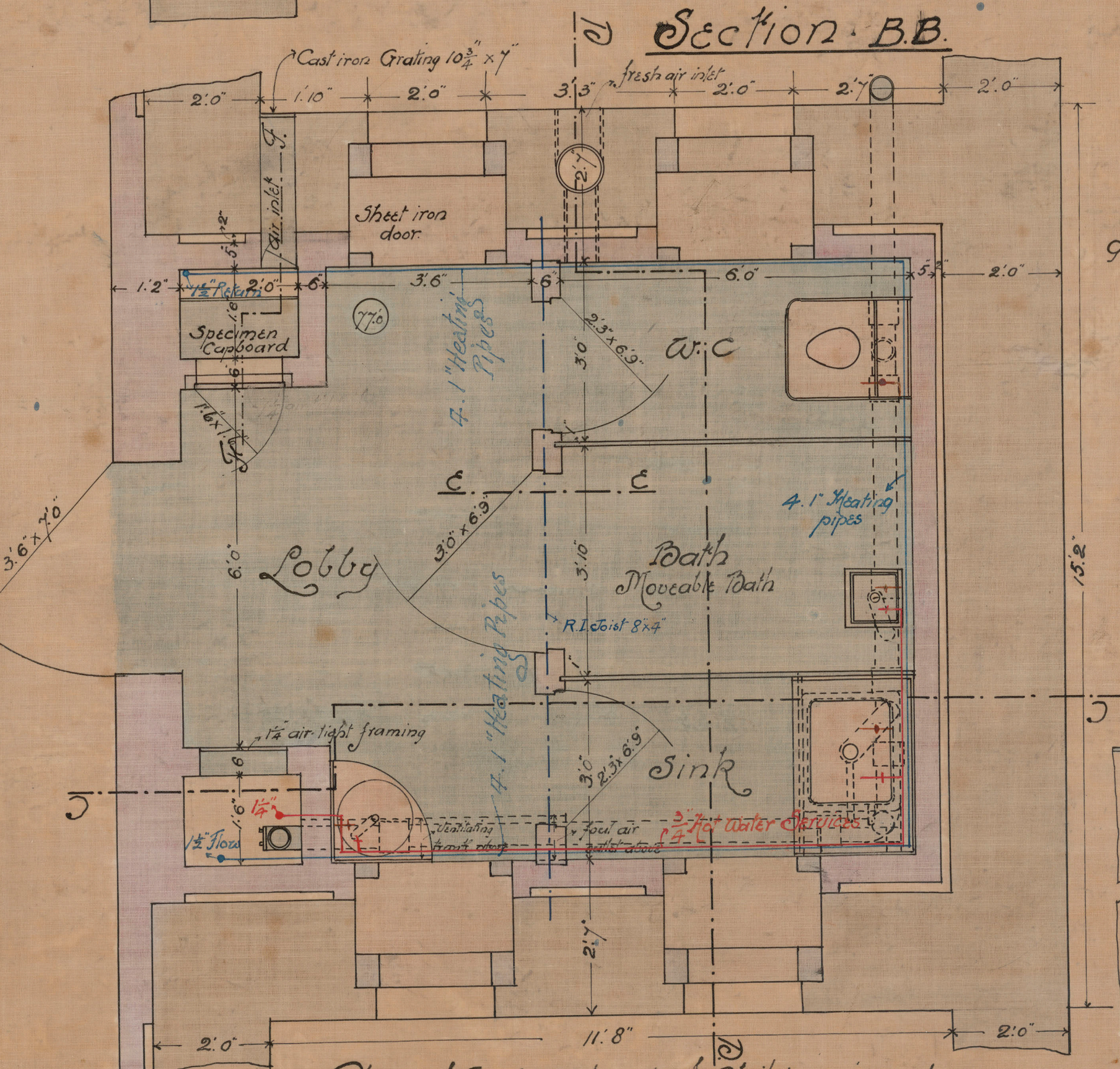
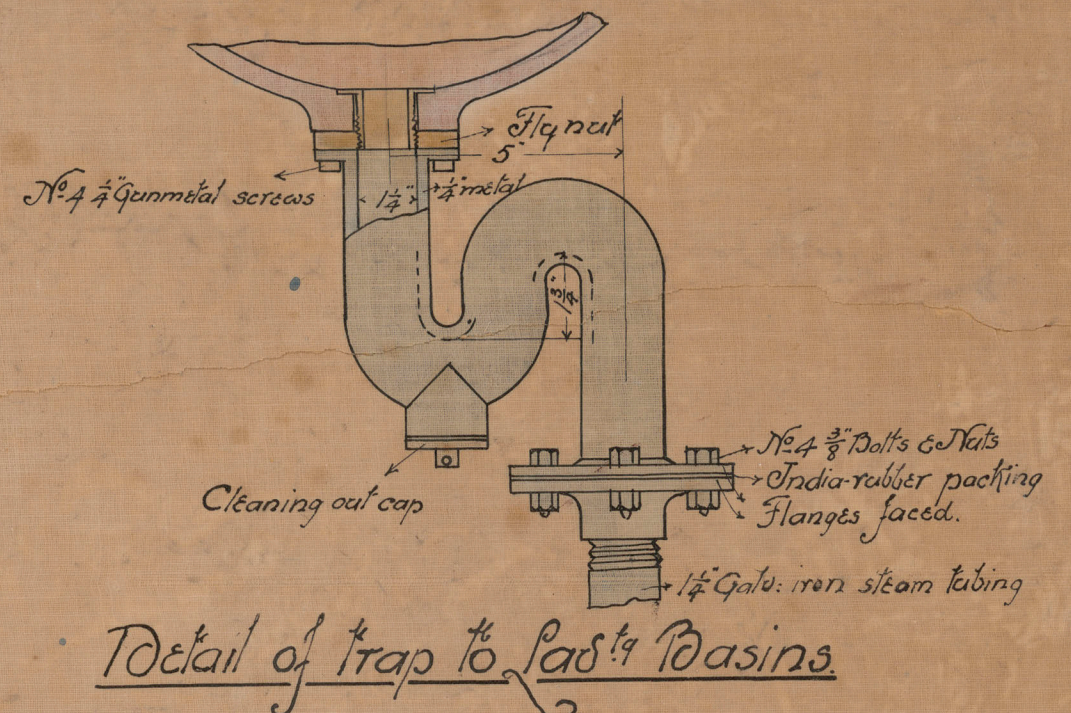
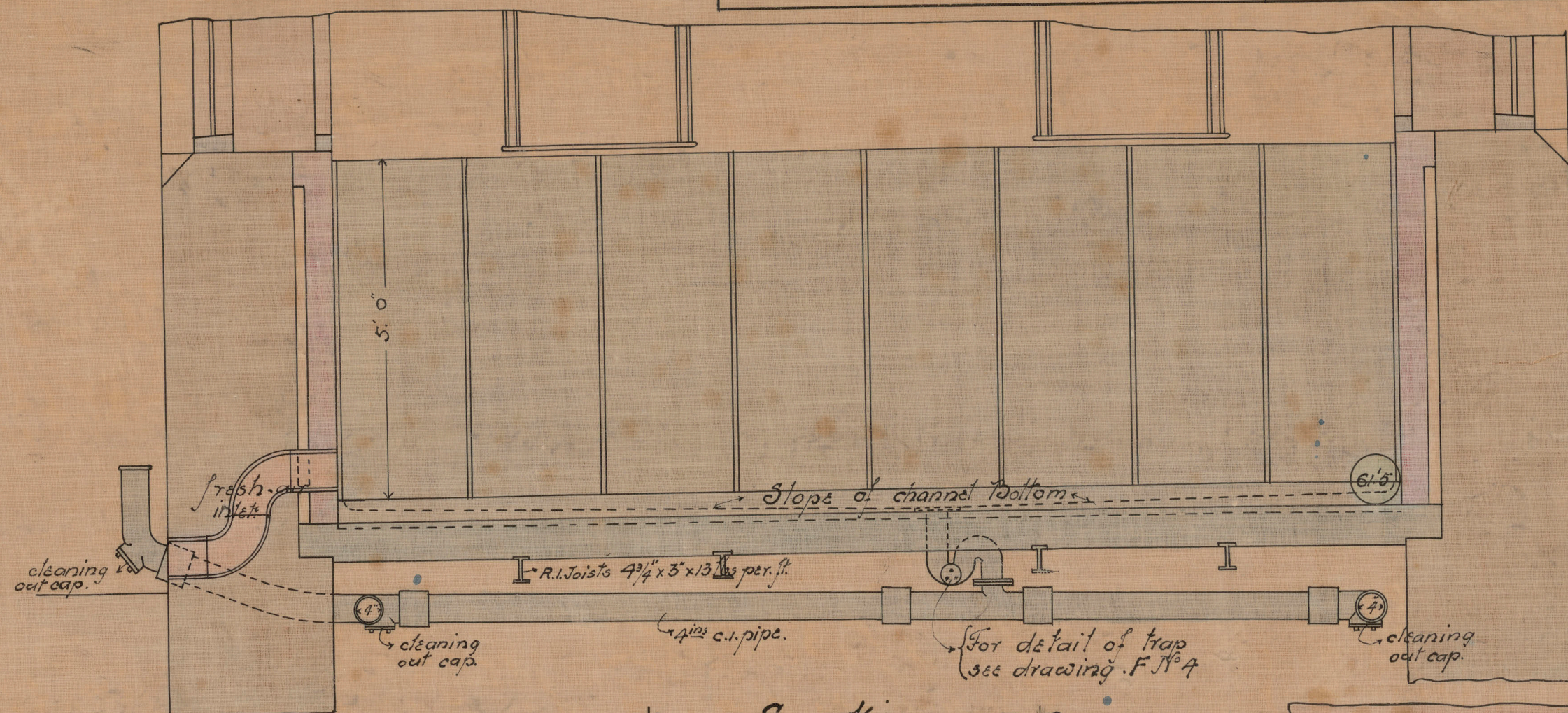
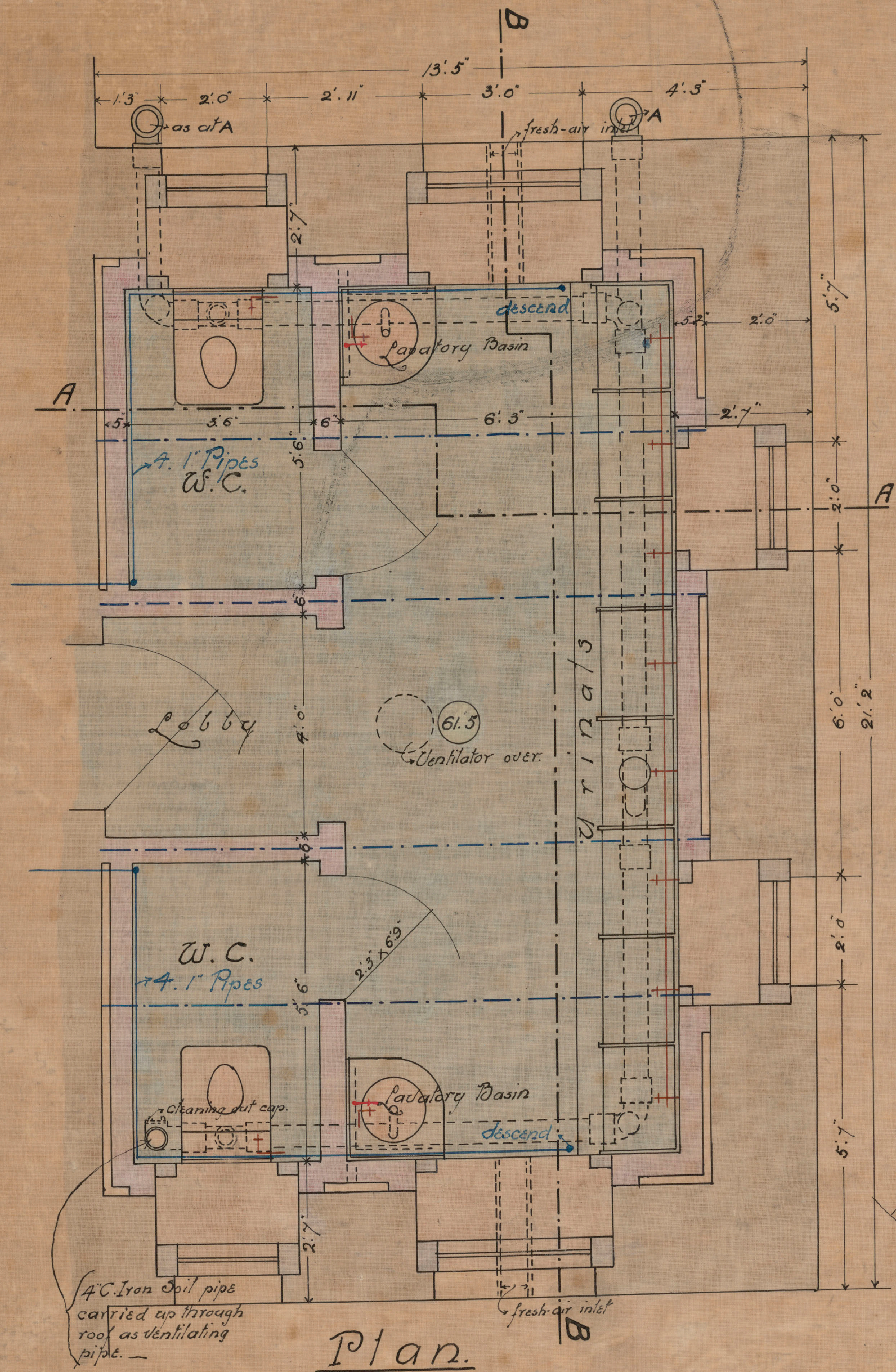
DRAWING NO. 1

February 1892

Notes
Figured dimensions on this drawing are in the clear of the finished work.
Figures in circles show the levels above datum.

For general detail of cleaning-out caps see drawing B.J.P. 11.
Down pipes denote Cold Water Services.
Blue lines denote Heating.

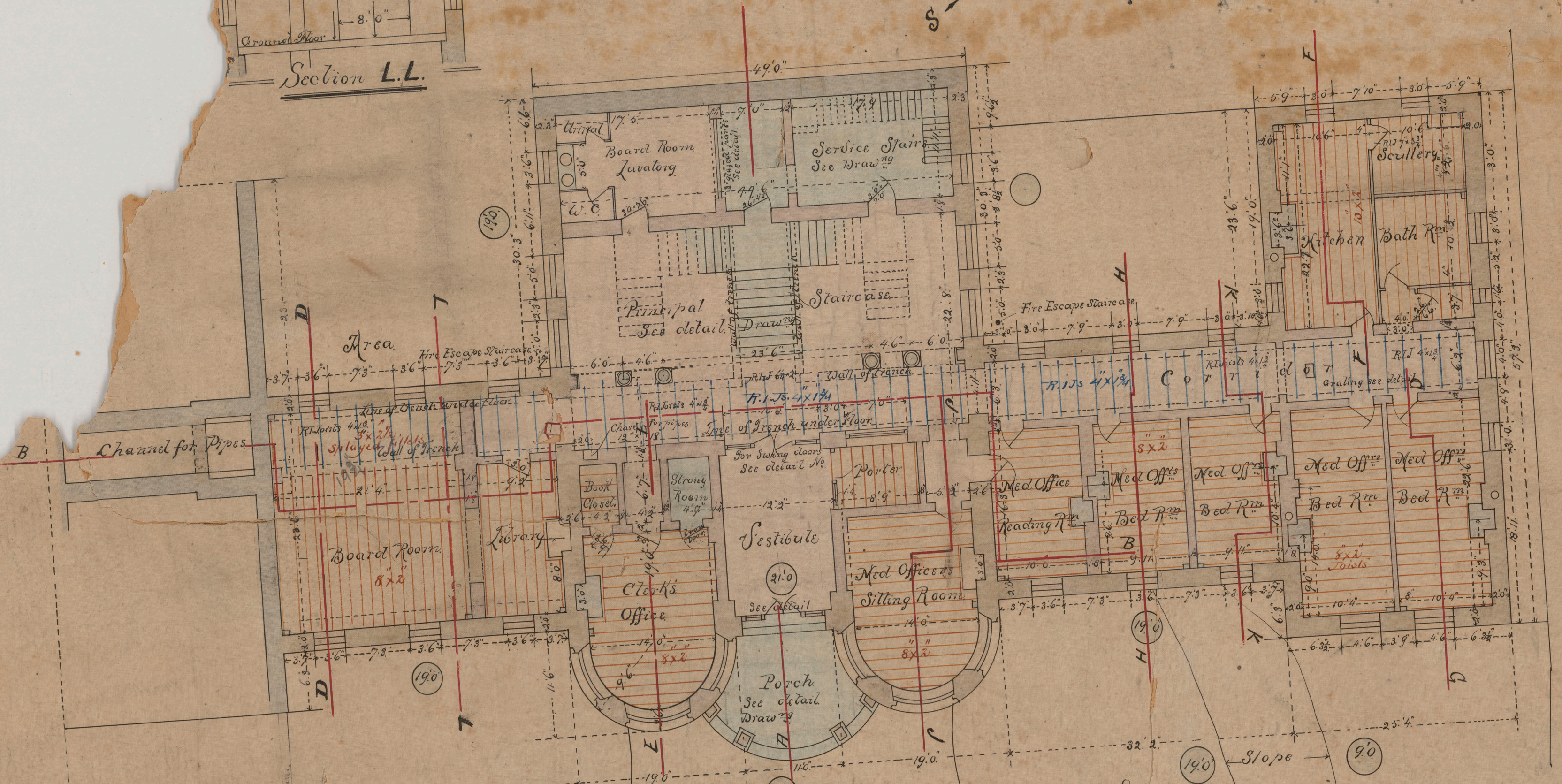
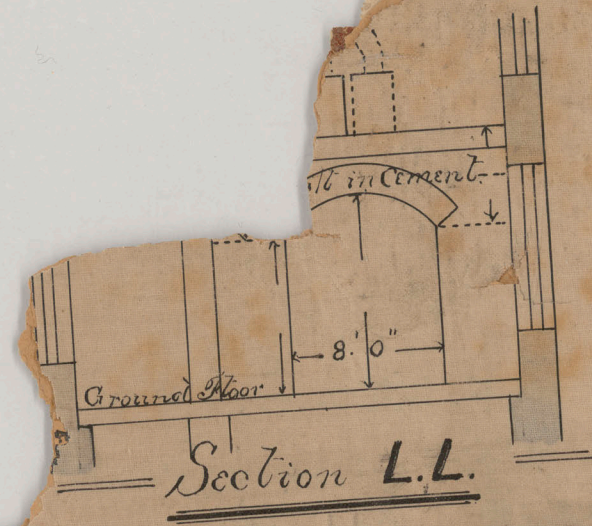
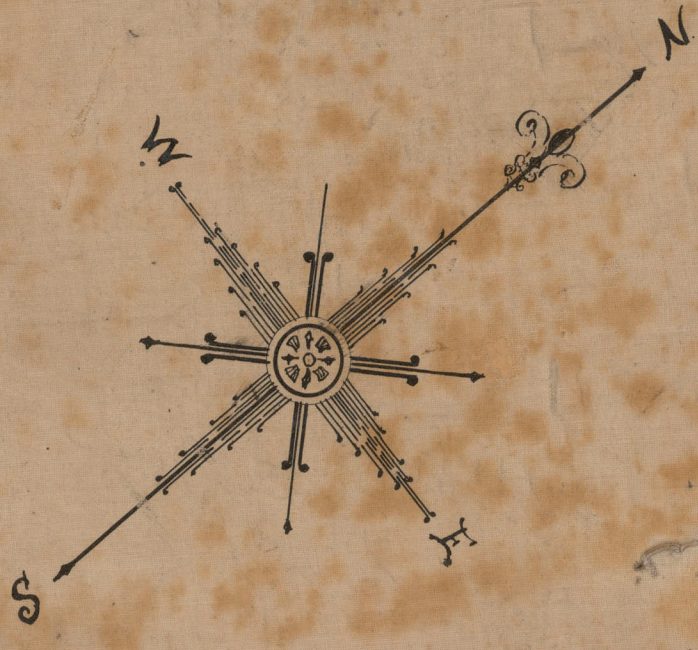
Red lines denote Hot Water Services



Scale 2 feet to an inch
Scale to details 1/2 full size

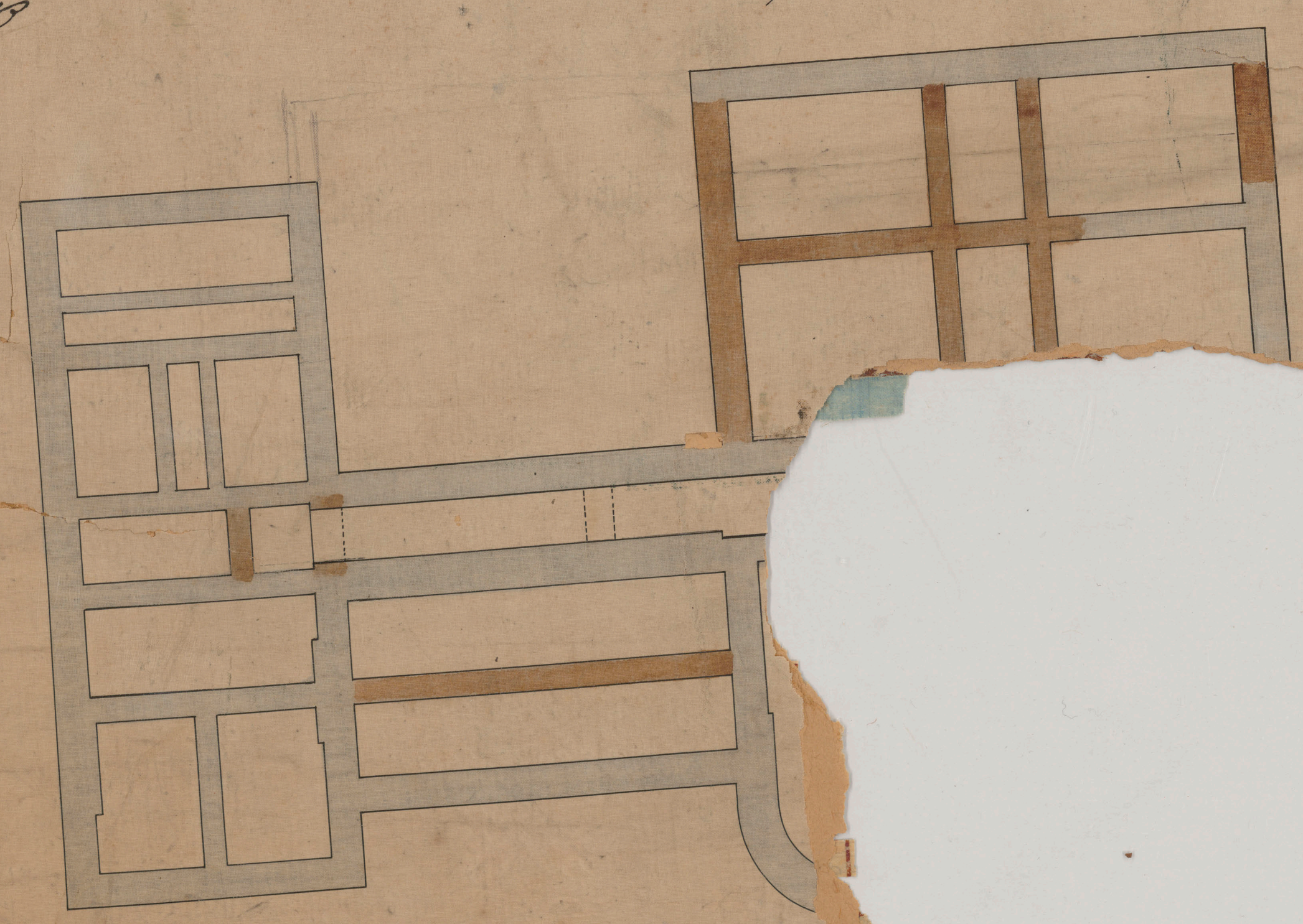
H. SAXON SNELL, FRIBA.
ARCHITECT
22 SOUTHAMPTON BUILDINGS,
LONDON W.C.
J. R. RHIND, ASSISTANT ARCHITECT.
Montreal.

B
DRAWING NO. 2



— Plan of Second Floor below Principal Floor —
— Ground Floor —

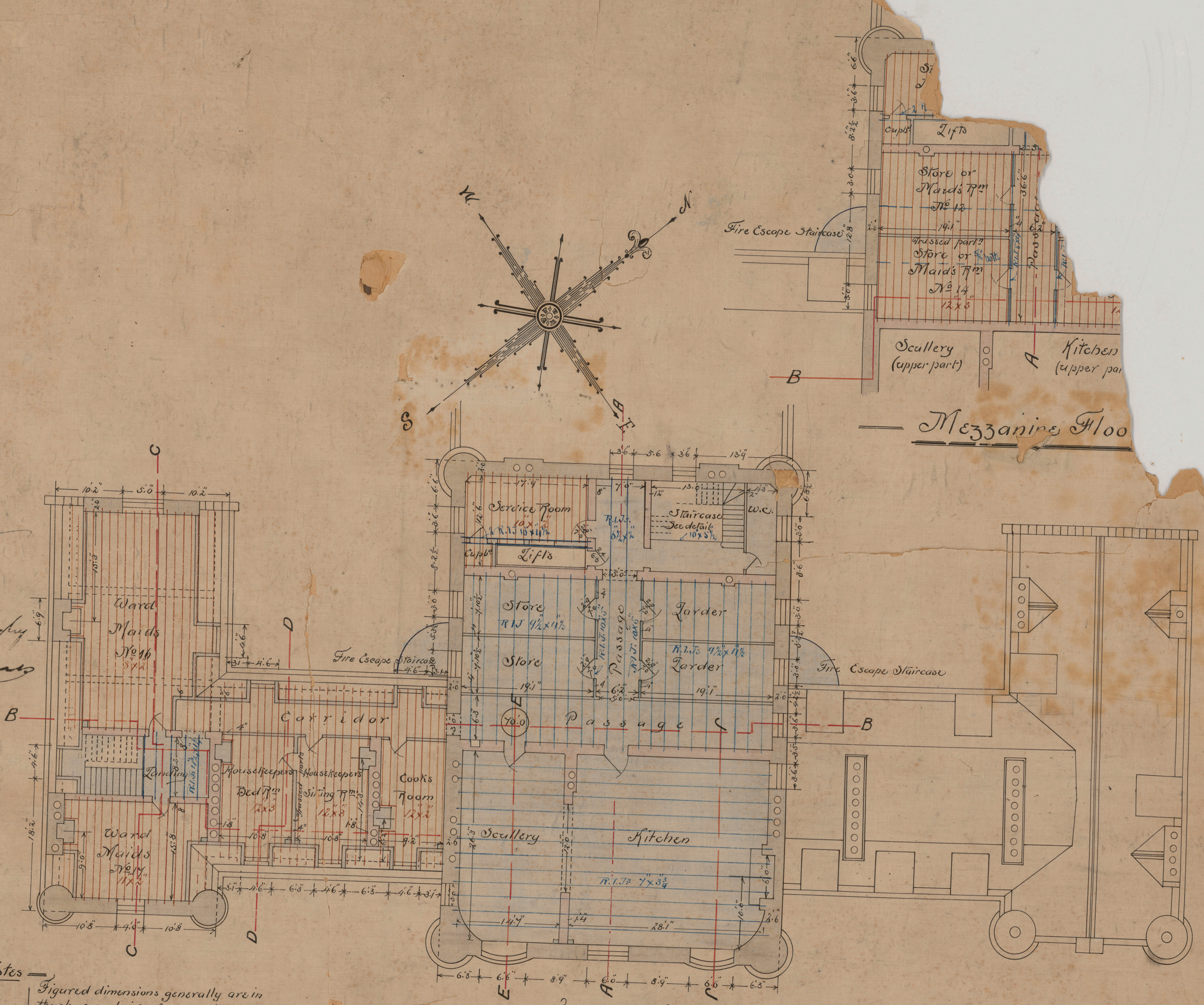
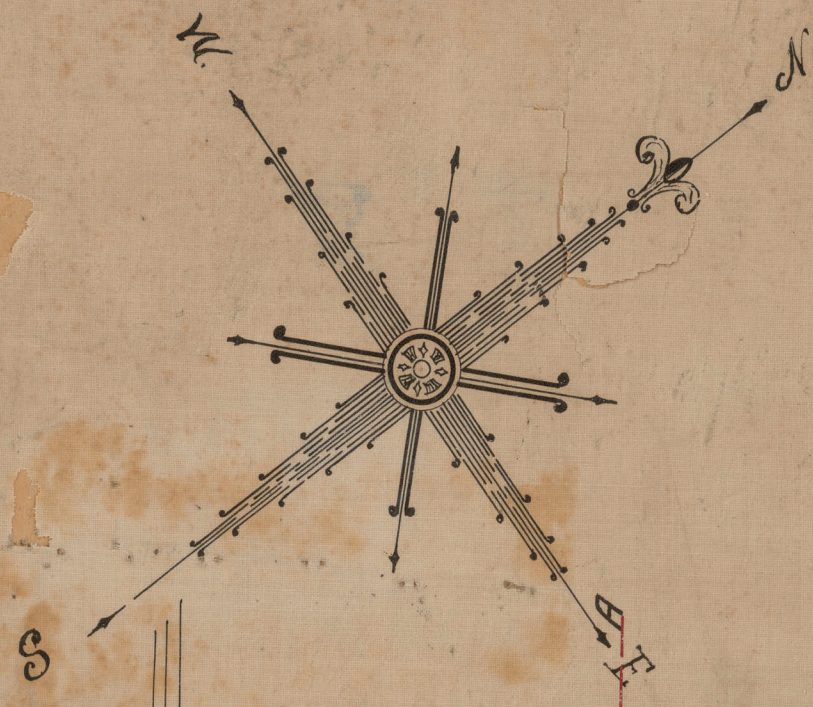
*L. Hall
on Hall
not a son
Baldy
copying by
E. J. James*



Note. —
Figured dimensions generally are
in the clear exclusive of grounding
or plaster.
Doors are figured net size between
rebates & to be on Basements
Floor.

ROYAL VICTORIA HOSPITAL,
MONTREAL.

Peter Lyall
Inspector
in Charge
J. J. Bennett
Architect
John Murphy
Contractor
Emul Jones



Mezzanine Floor

Notes
Figured dimensions generally are in the clear exclusive of groundings and plaster.
Doors are figured net size and to be on the high side.

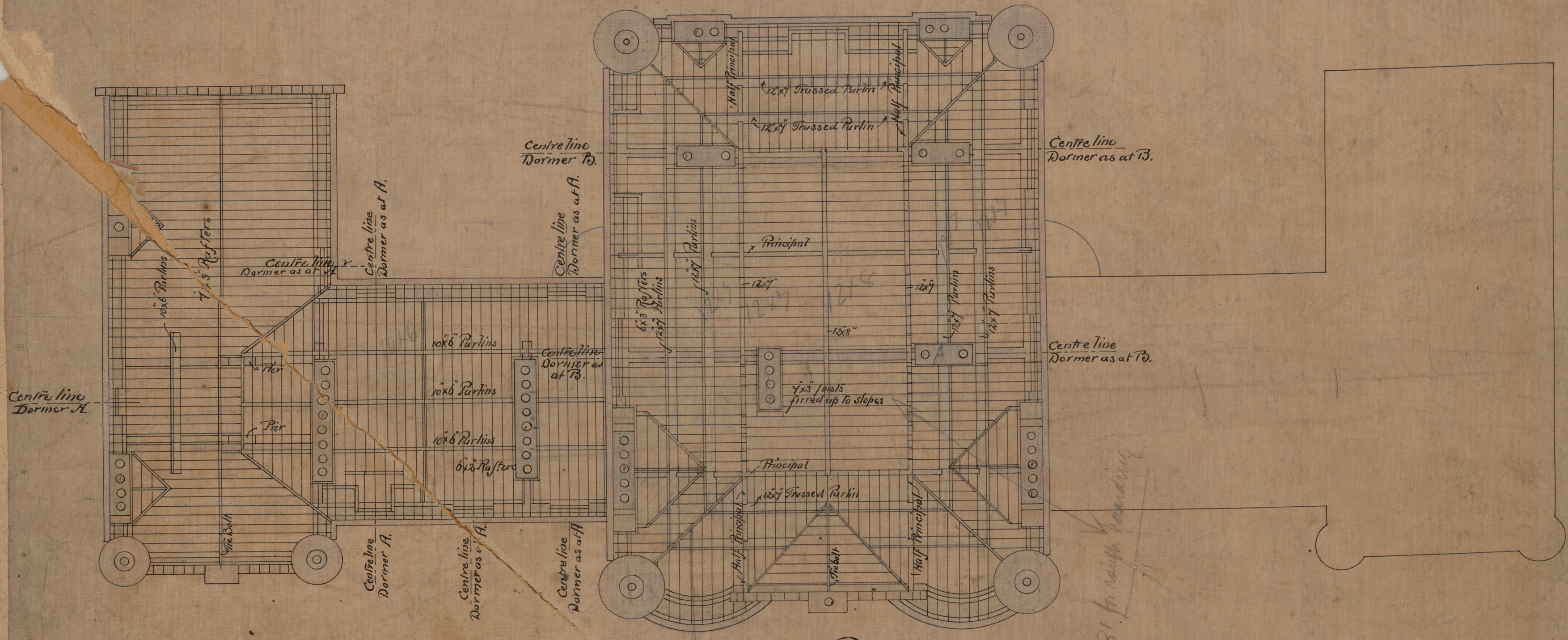
Fourth Floor



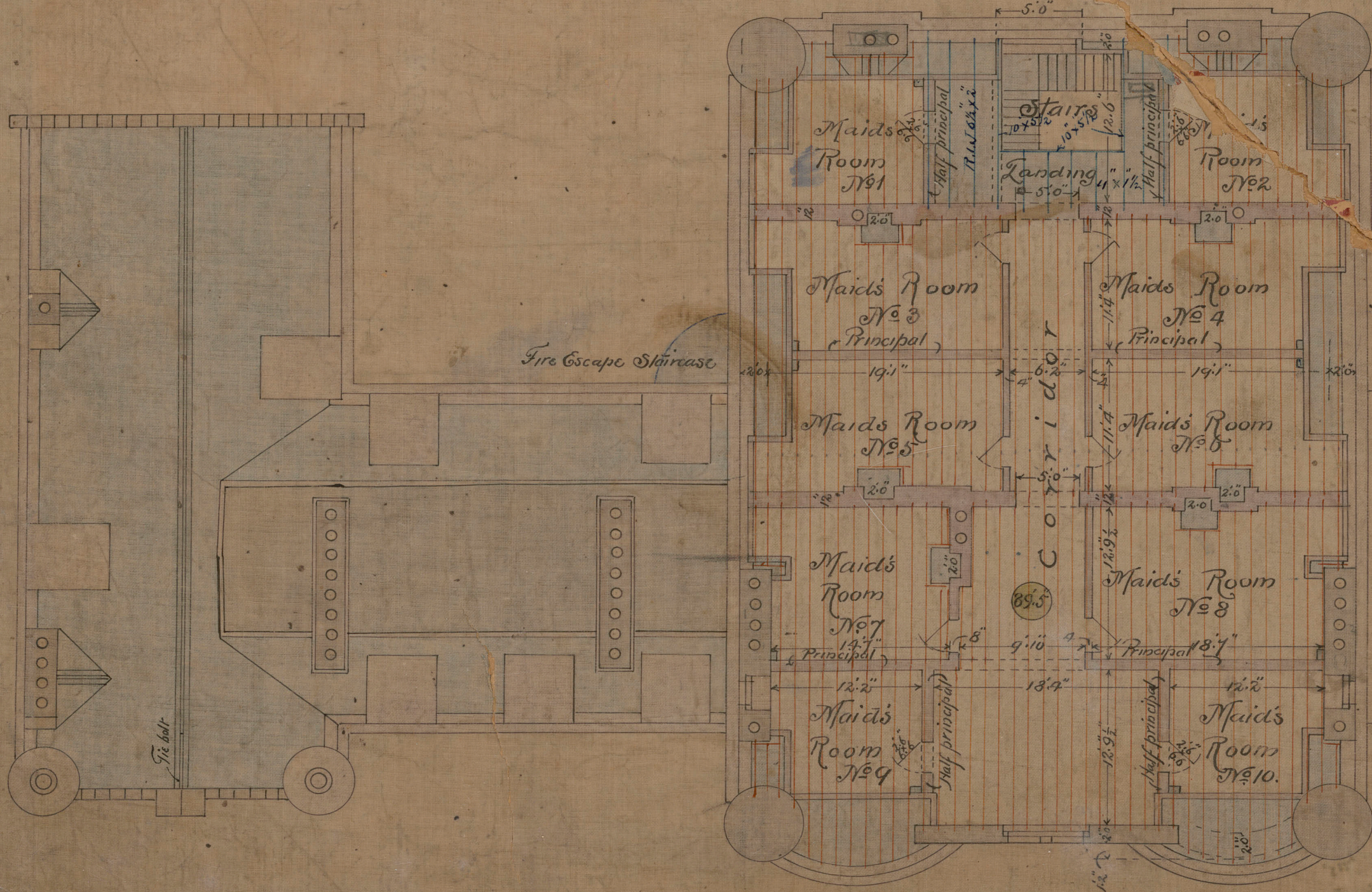
ROYAL VICTORIA HOSPITAL,
MONTREAL.

B

DRAWING NO. 7



Roof Plan



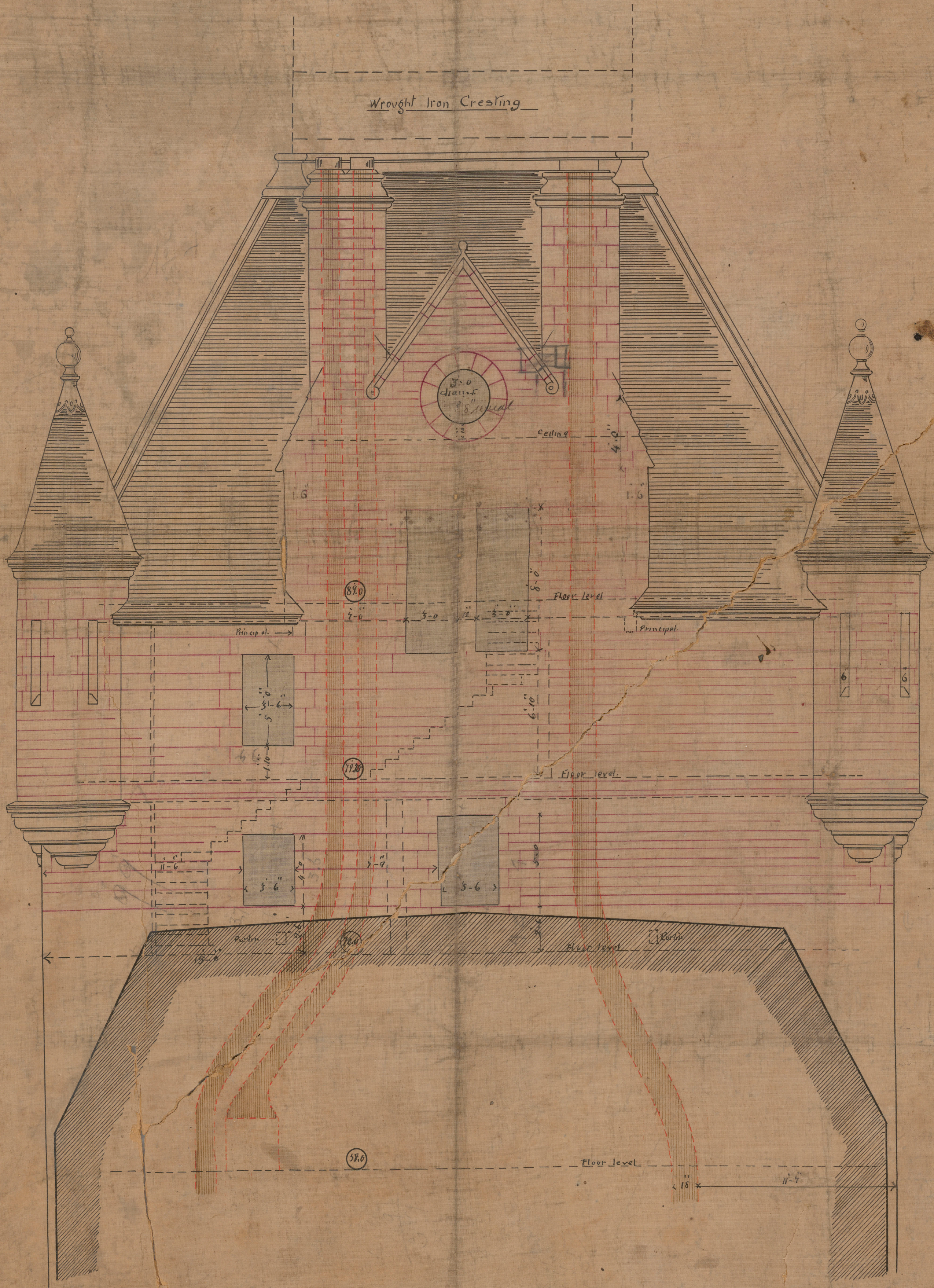
Fifth Floor

H. SAXE & SNELL & SON,
ARCHITECTS,
22 SOUTH BAY BUILDING,
LONDON, W.C.
R. RHIN, ASSISTANT ARCHT.

ROYAL VICTORIA HOSPITAL,
MONTREAL.

B-C

DETAIL - DRAWING No 31



Scale $\frac{1}{4}$ " = 1 foot
Sept. 1890.

H. SAXON SNELL & SON,
ARCHITECTS,
22 SOUTHAMPTON BUILDINGS,
LONDON W.C.
J. R. RHIND, ASSISTANT ARCHITECT,
Montreal.

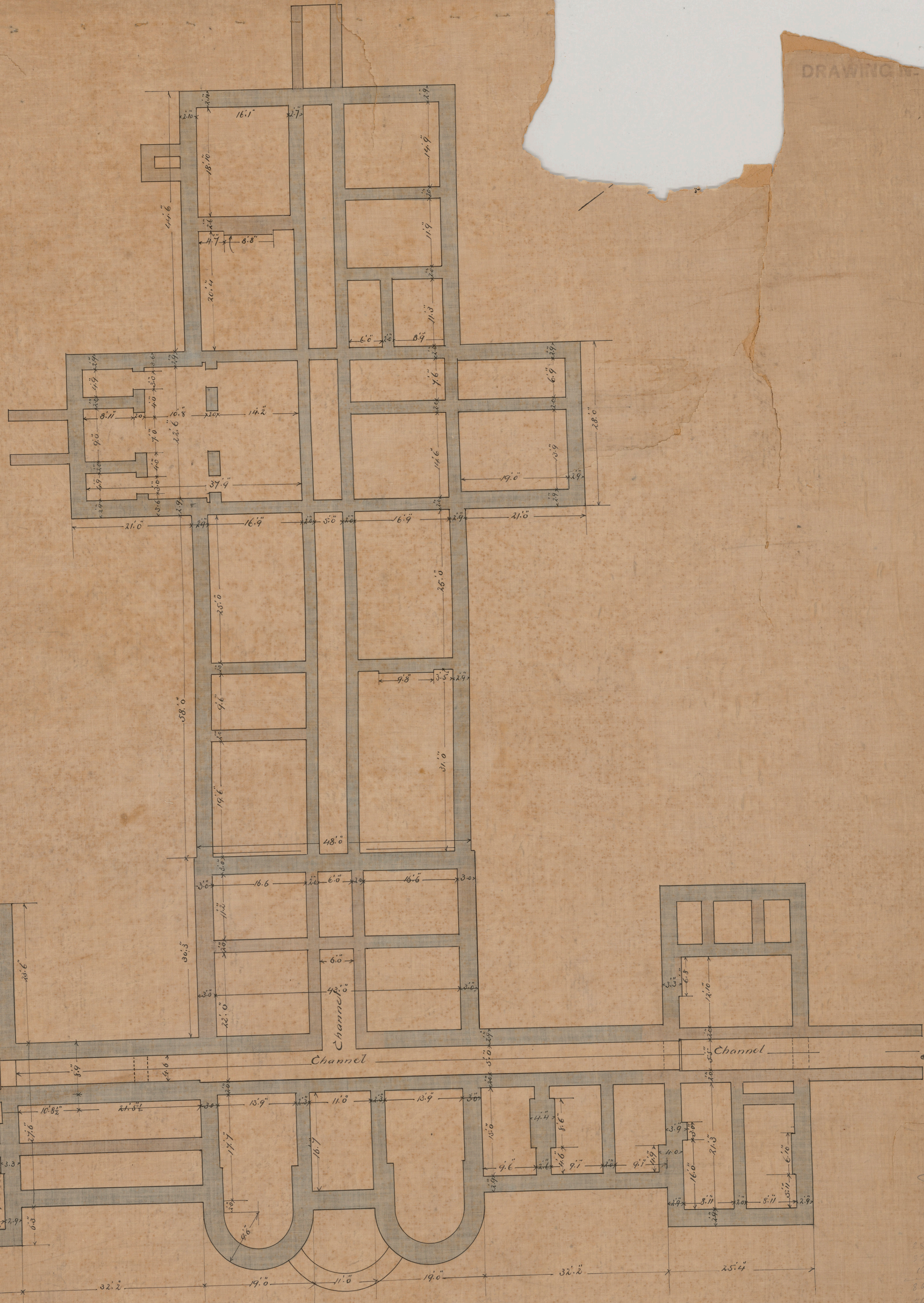
Snell - RVH. ADMIN. 3
20

Snell - RVH. ADMIN. 3
20

HOSPITAL

DRAWING

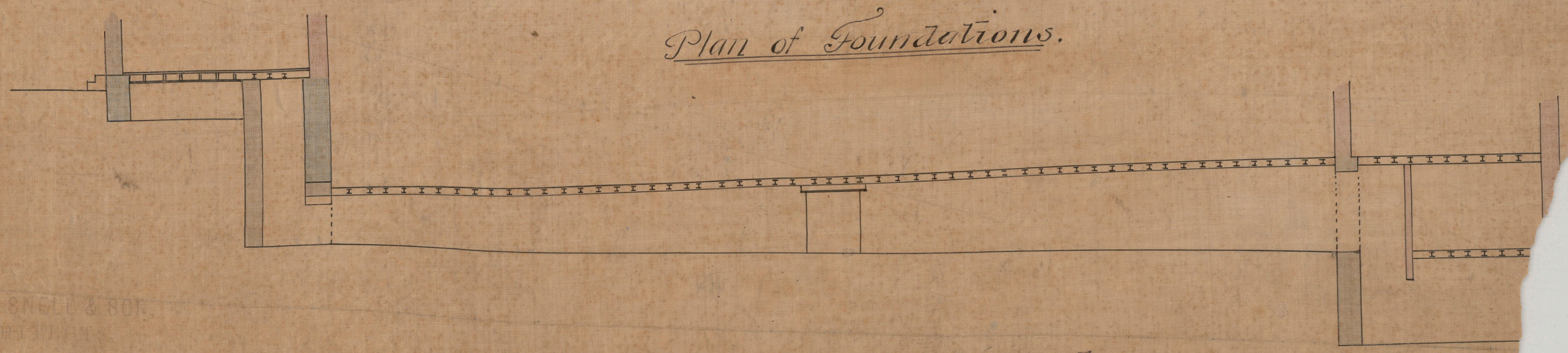
*L. Gall
Architect
200 West 4th St
St. Louis, Mo.
and Roofing
Contractors*



*Revised
for 1887*

*Flumble drain soft
From 9 to University St
to keep funnel clear
of water by 17.50.*

Plan of Foundations.

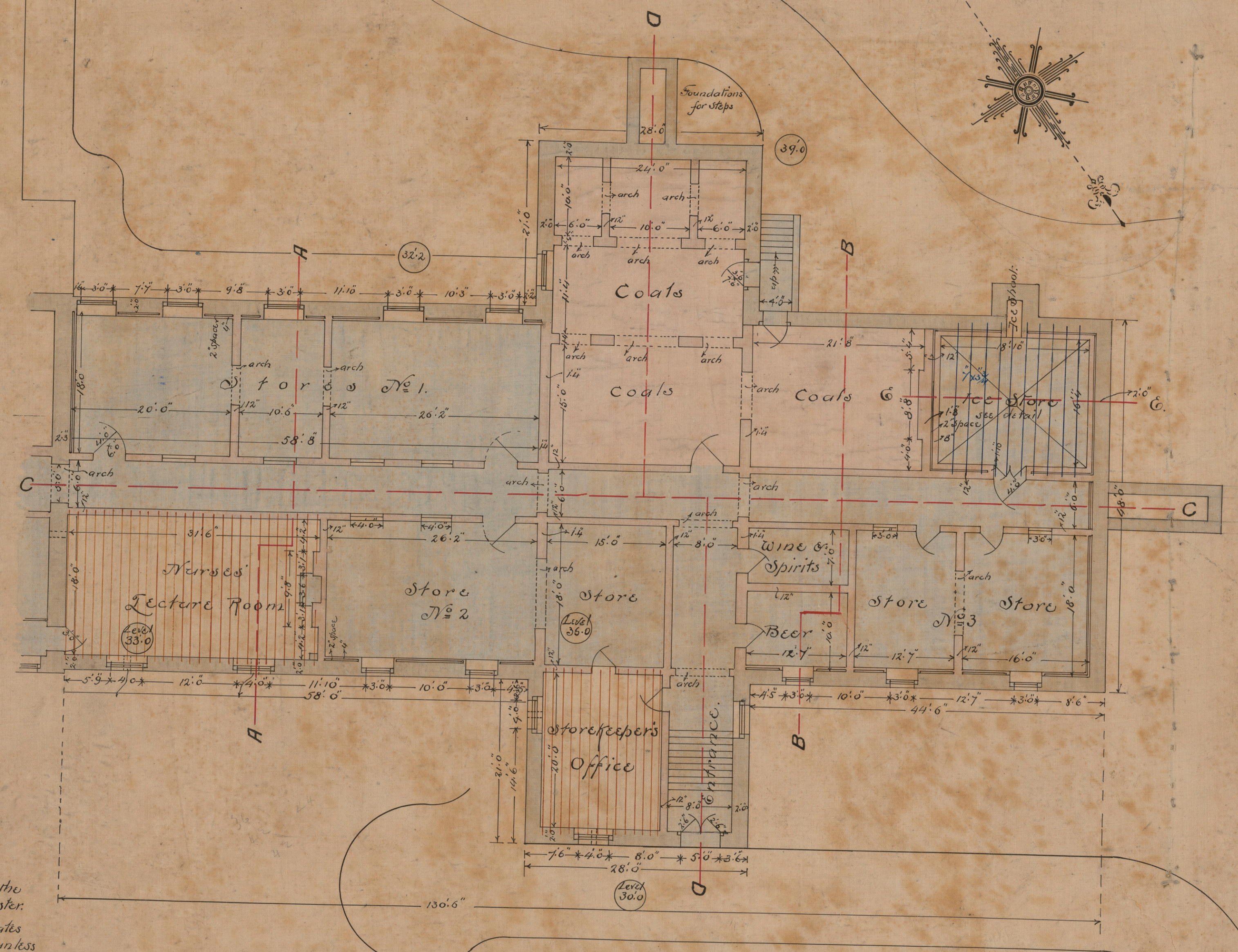


- Section thro. Channel

H. SAXON ENGR & ARCHT
27 SOUTH BROAD ST
ST. LOUIS, MO.

E. Wilson, M.S. Engr
CA

Spall
Limestone
Carp
Mustard
Sardine
and
Honey
by
and
James



Notes
Figured dimensions generally are in the
door exclusive of grounding or plaster.
Doors are figured net size between rebates
& to be on this floor 8'0" wide & 6'9" high unless
otherwise described.
Chimney openings on this floor to be 2'3"
wide & 3'6" high to springing of arch unless
otherwise described.
John's tubes are shown thus \square
Figures in circles thus (35.0) show
the labels above datum.

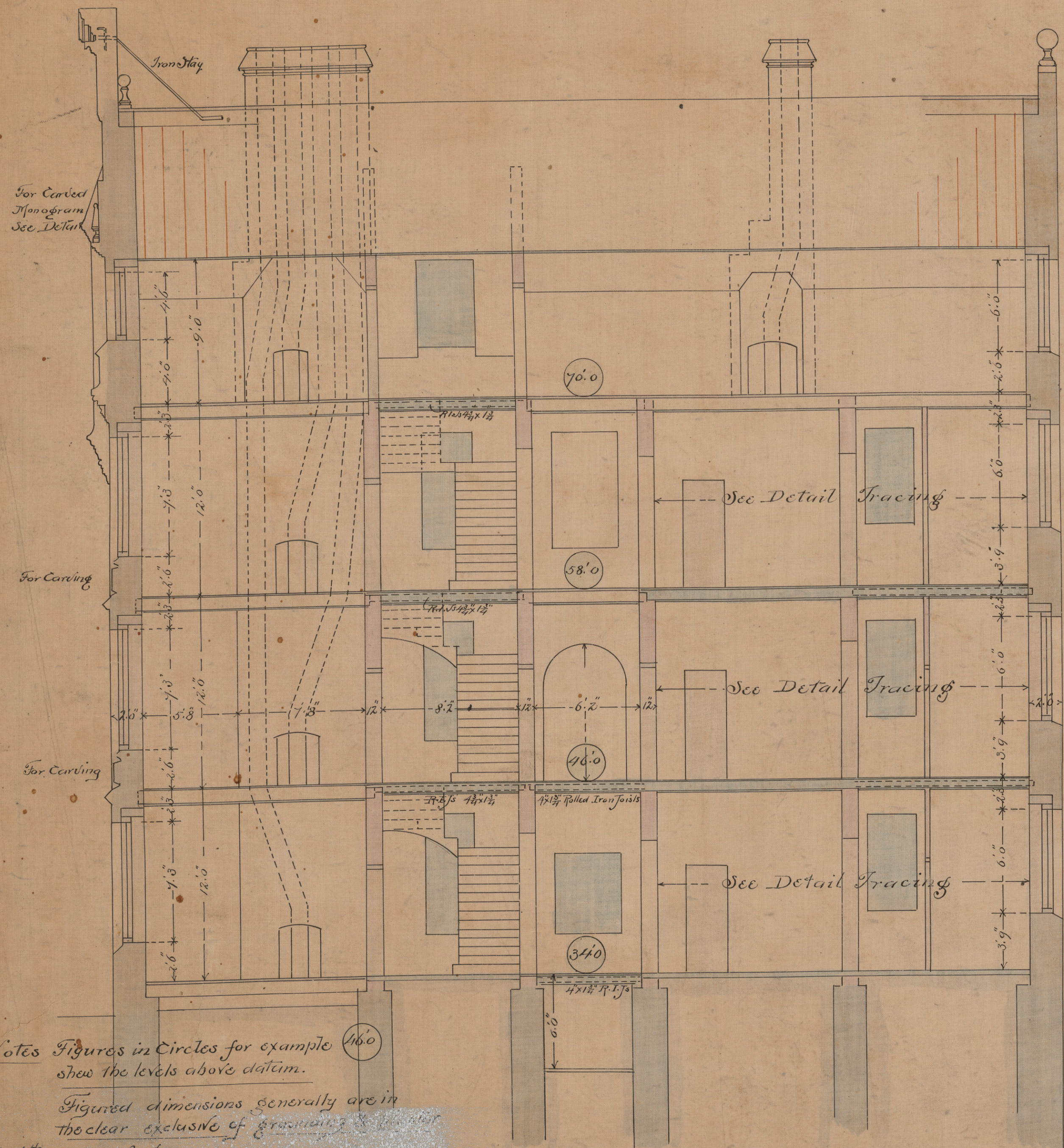
Basement
MAIN BLDG.

Scale $\frac{1}{16}$ inch to a Foot

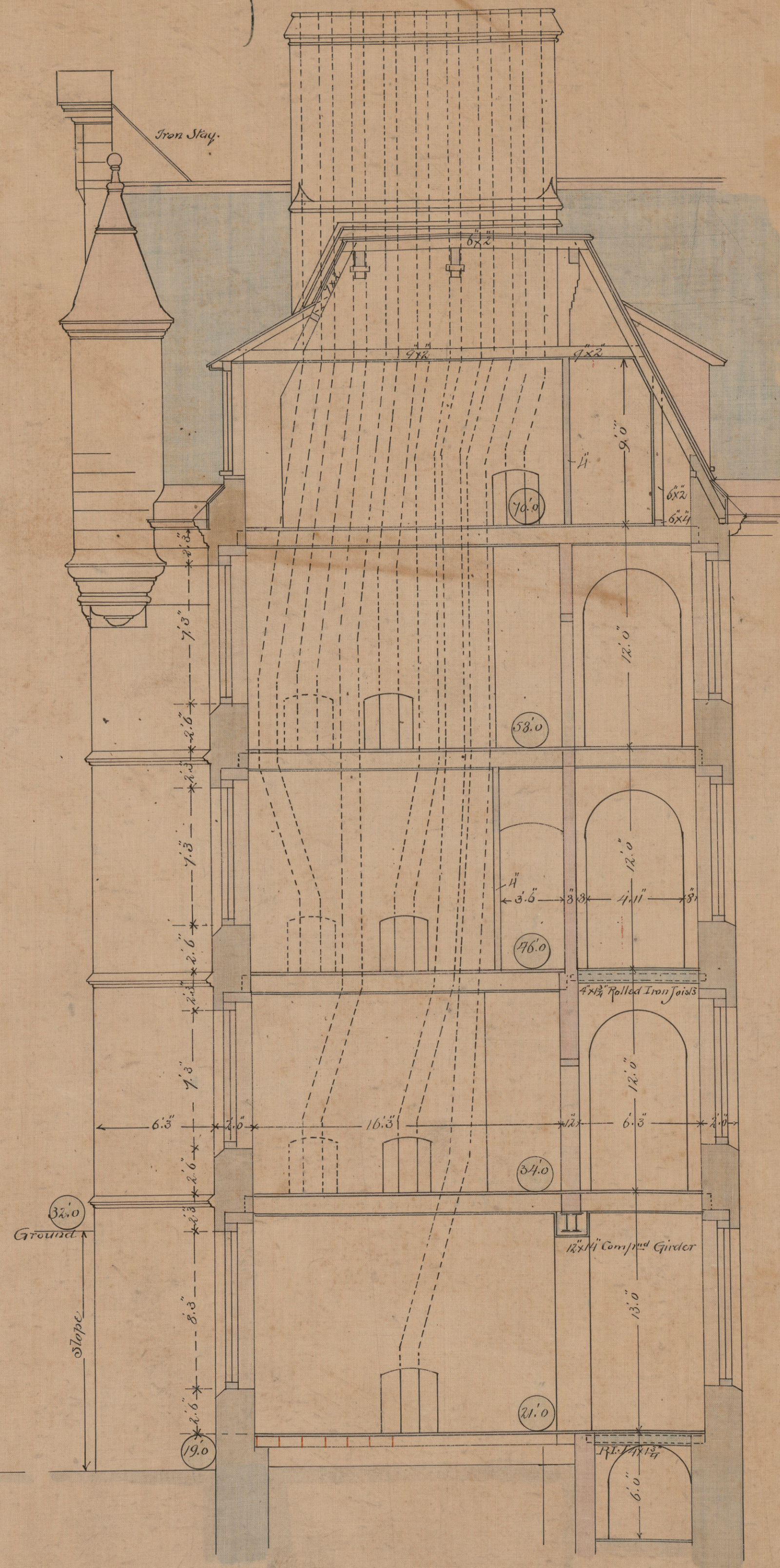
ROYAL VICTORIA HOSPITAL,
MONTREAL.

DRAWING No 8

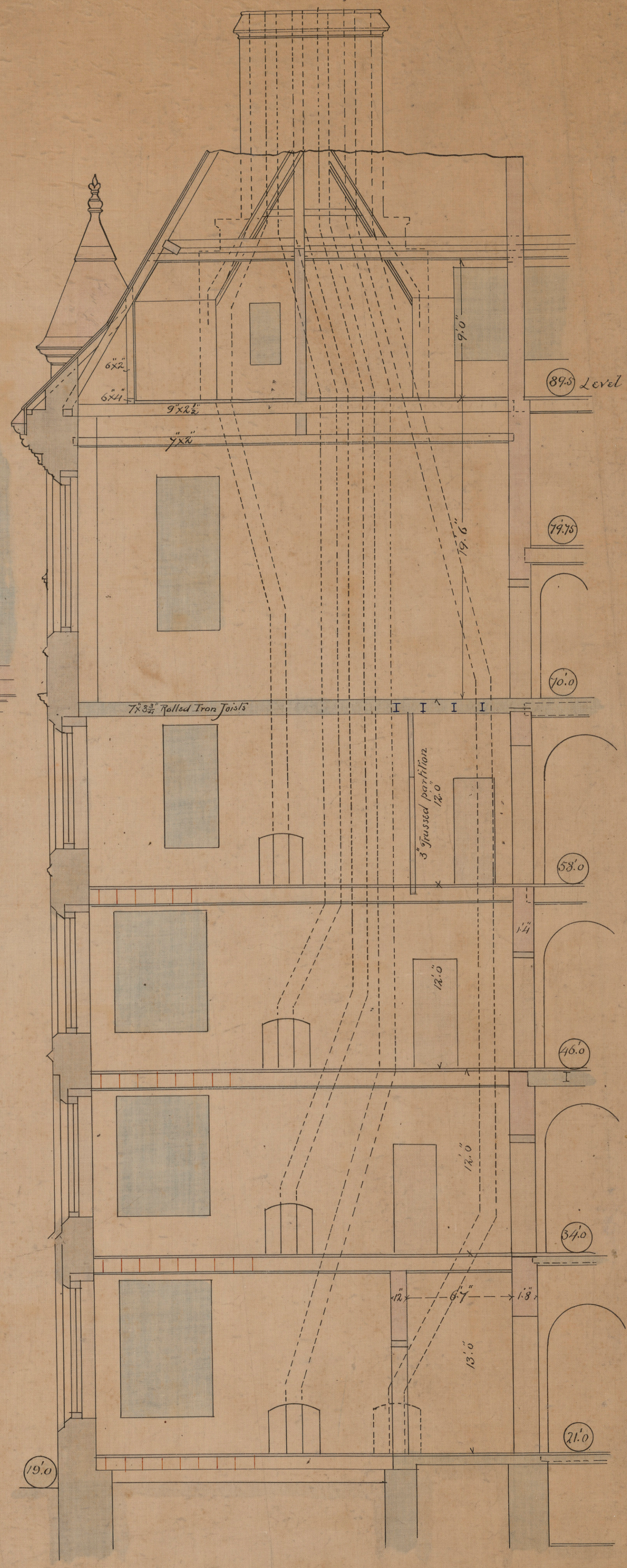
*City Hall
St. James Street
Montreal
J. Ross
Architect
1872*



Section C.C.



Section D.D.



Section E.E.

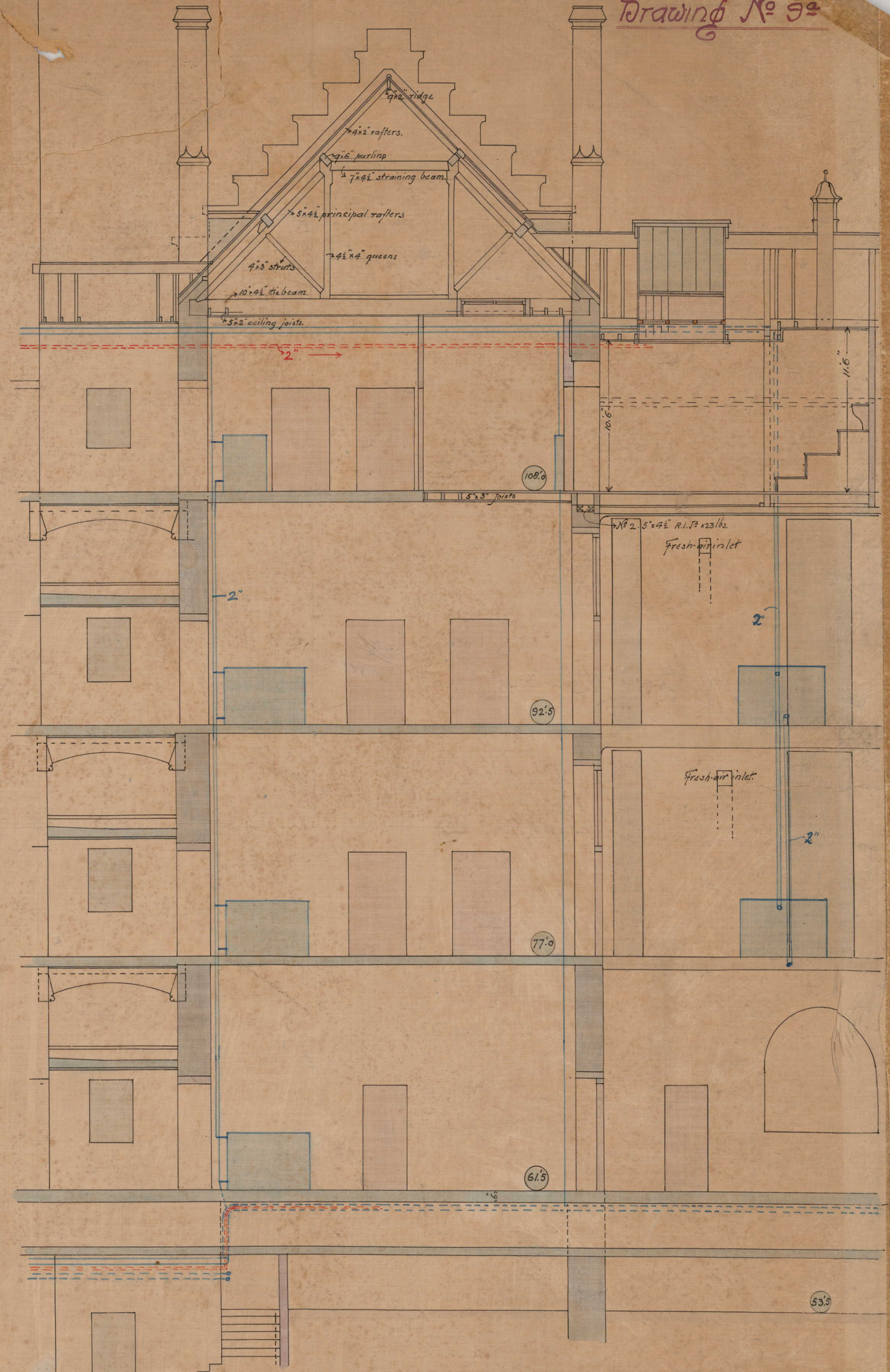
H. SAXON SNELL & SON
ARCHITECTS
22 SOUTHAMPTON ST. LONDON

Notes Figures in Circles for example (46.0) show the levels above datum.
Figured dimensions generally are in the clear exclusive of ground line & wall thickness.
Scale $\frac{1}{4}$ inch = 1 foot.

ROYAL VICTORIA HOSPITAL

MONTREAL

DRAWING No. 9.
Drawing No 92

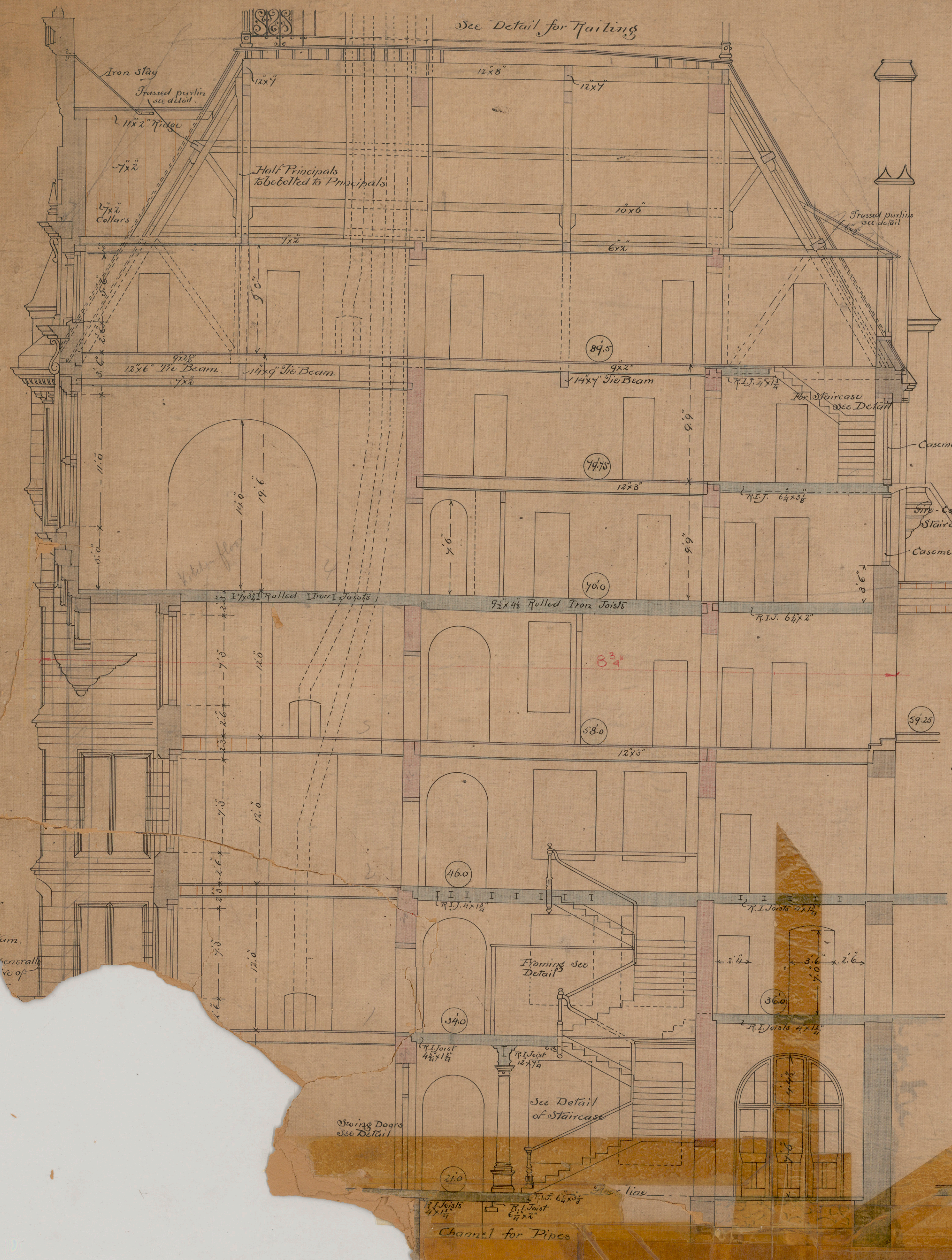


Notes
 Figures in Circles (61.5) show the levels above datum.
 Red lines denote Hot-water Services
 Blue " " Heating " "
 Brown " " Cold-water " "
 R. I. P. " " Rolled Iron Joists

A
 Note - The portion west of A is only included in the present contract.

H. SAXON SNELL F.R.I.B.A.
 ARCHITECT
 22 SOUTHAMPTON BUILDING
 LONDON W.C.

*Plan for
Wagon House
at
St. Louis
Mo.
for
Robert
W. Johnson
of
St. Louis
Mo.
by
Frank
P. Smith
Architect*



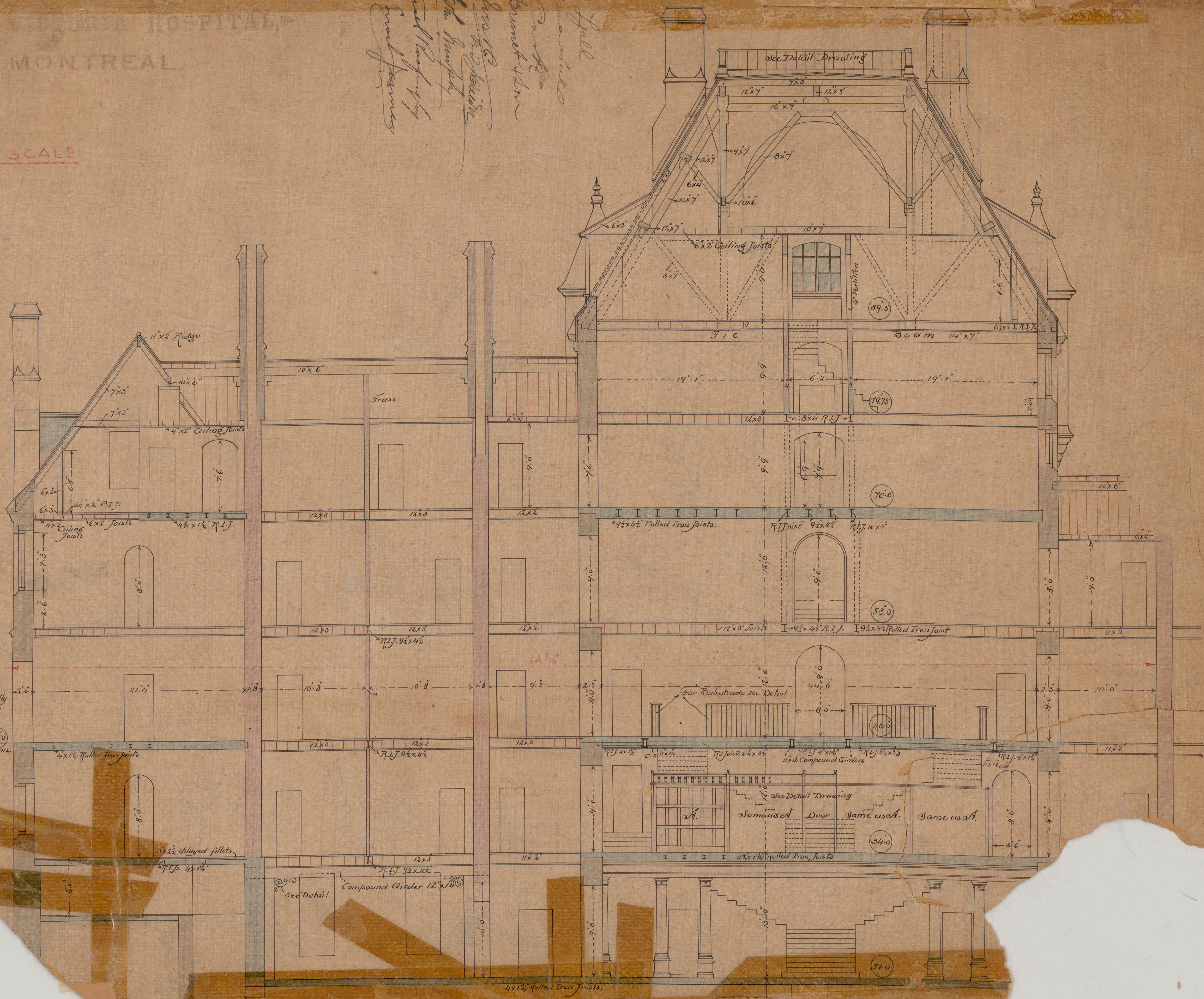
DO NOT SCALE

Notes
Figures in circles for
example thus (360)
how levels above datum.

ROYAL VICTORIA HOSPITAL,
MONTREAL.

*Handed by
Mr. P. J. G. G.
1882*

DO NOT SCALE



Notes.
Figured dimensions generally
are in the clear, exclusive of
grounding & plaster.
Figures in circles thus (58.0)
show the levels above Datum.