



EXTENSION TO THE
ROYAL VICTORIA COLLEGE
MCGILL UNIVERSITY · 1930 ·

*Nobbs & Hyde
Architects*

Extension To The Royal Victoria College, Montreal P.Q.



University Street Elevation

Nobber Hyde.
Montreal
6 x 11 1/2

Extension to The Royal Victoria College
McGill University

omit



25

1 cut of this

Elevation to University Street

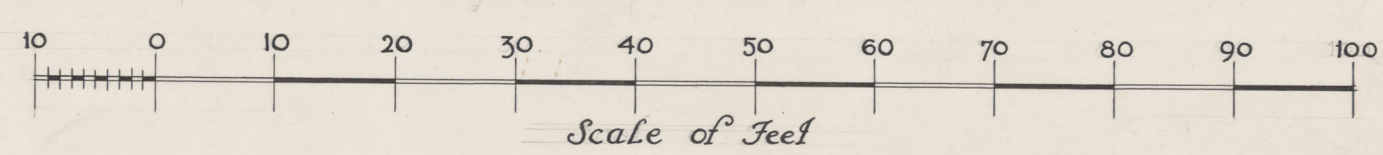
Reduce to 1/4 this size
Zinc line



25

1 cut of this

Elevation to Sherbrooke Street

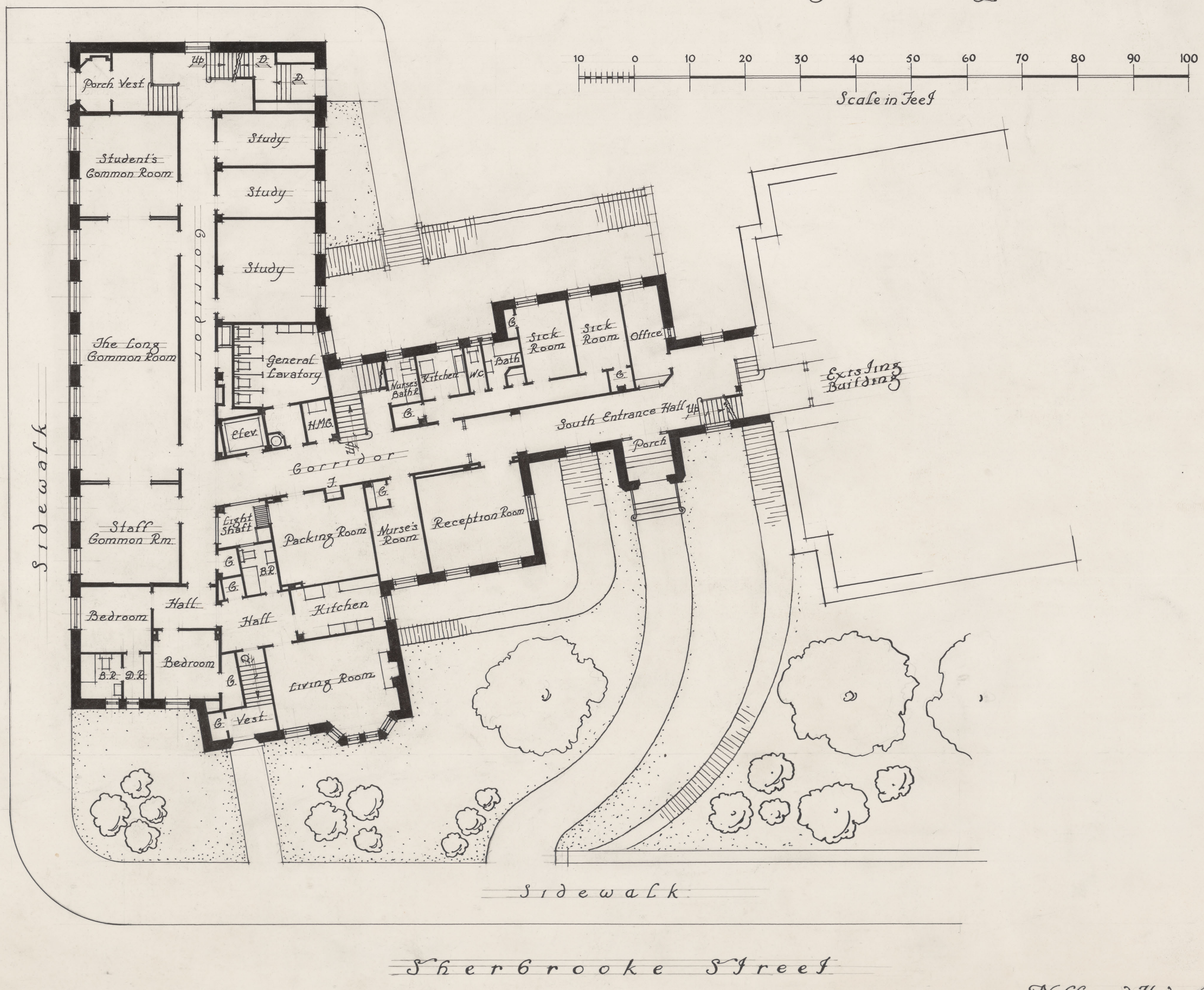


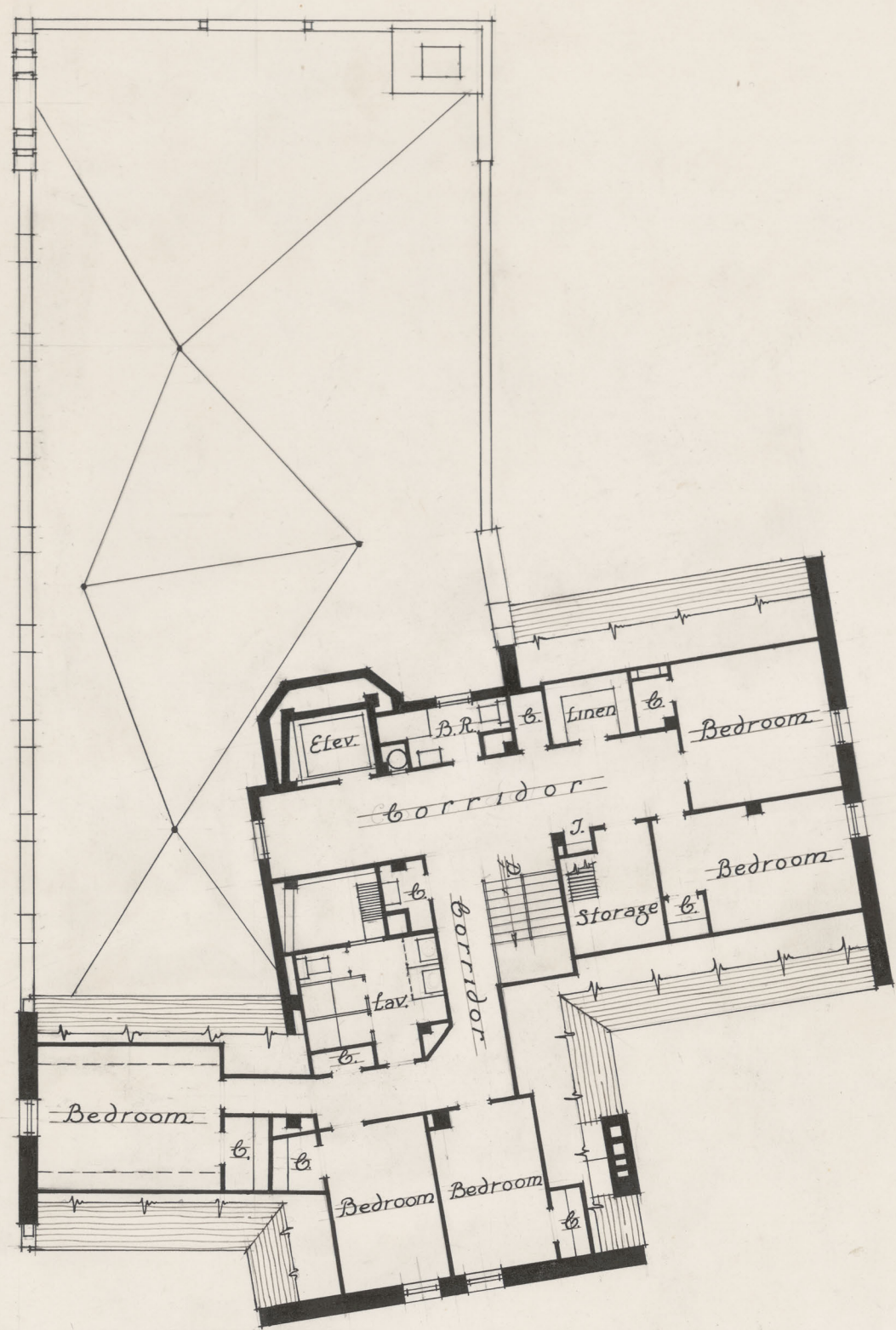
omit — Nobbs and Hyde, Architects.
Montreal, 1931.



Second Floor Plan

Extension to The Royal Victoria College
McGill University





Attic Floor Plan.

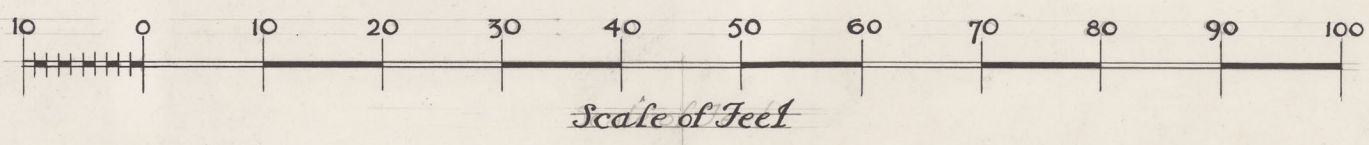


Fourth Floor Plan.



Basement Plan.

*Extension to The Royal Victoria College
McGill University*



Extension To The Royal Victoria College Montreal, P.Q.



Sherbrooke Street Elevation

*Nobbs & Hyde
Montreal.
6.1.79.*





ROYAL VICTORIA COLLEGE MONTREAL

NOBBS & HYDE ARCHITECTS



ROYAL VICTORIA COLLEGE MONTREAL

NOBBS & HYDE ARCHITECTS